

Australian & World Rare Coin & Banknote

# AUCTION 71

Sunday 14th March 2010

Sofitel Hotel, Gold Coast Queensland





LOT 302



LOT 303



LOT 304



LOT 309

# Welcome To Sale 71

*Welcome to our first sale for 2010, and once again it is a stunner! Thanks as always to the numerous vendors for providing a diverse, interesting and rare selection. Those that again were too slow off the mark and missed this sale have been allocated spaces in the next sale where possible. Please note: the cut off dates for the next sale will be sometime in mid/end of June, but is sure to fill fast, so don't delay. We must have had at least one person a day ring through most of January and into February, by which time the cataloging was well and truly finished, and we were preparing to go to print and to take the highlight lots and catalogues to Perth. To those that missed out, sorry that we couldn't help you, but the days of entering lots at last minute are just not possible for us anymore. The next auction, Sale 72, will be held in September 2010, and I can assure you, will again have some amazing items on offer, and will also include part two of the large "Pre Decimal Collection" that is a feature of this current sale, as well as a number of superb and rare highlights in both Coins and Banknotes.*

## Some Sale 71 Auction Highlights and more...

One of the key highlights in this sale is a superb Pattern 1937 Florin, a rare and interesting coin that never saw circulation due to the monarchy changes at the time, and the eventual abdication of Edward VIII. This coin is also one of the finest, if not the finest, of the handful known and is conservatively estimated at \$125,000. This particular FDC example is sure to set a new record price, as this is the first example to be offered since IAG also sold a (slightly inferior) example in Sale 63 in 2006 for the then record price of \$120,750.

Banknotes of note include some amazing specimen issues. On offer this sale is a \$20 Polymer Specimen that has the distinction of being Specimen Number 0001, and is the only such example to ever be sighted on the market. Traditionally, the first few Specimens produced were given to the Royal Family, and it is believed that in later issues, the number one note (if produced) was kept for archival purposes. The note comes in its original presentation pack, and has hand written on it "Clare Merry Christmas Uncle Bernie 25-12-94" and is signed on the front "Bernie Fraser 25-12-94". This note was obviously presented by Bernie Fraser, the then Governor of the Reserve Bank to his niece Clare as a Christmas gift. The note has been estimated at \$80,000, and at that level, could well prove to be conservative given its rarity.

Another Specimen Set of significance in this sale is a full Type 1 Specimen album (plus the extra Type 3 \$50) officially presented to Monty Brown, Manager of the Note Printing Works at Fitzroy at the time of decimalisation by Bill Wilcock (the General Manager of NPB from 1962-69). The album comes with several significant items of historical memorabilia, including a letter from Lady Janet Clunies-Ross, widow of Sir Ian Clunies-Ross, who was a former prominent Scientist and Chairman of the CSIRO, who is also featured on the Reverse of the \$50 note. The album also contains an old photo of various designers and board members associated with the note production project. The album itself is signed inside by Lady Janet Clunies-Ross, Gordon Andrews (the head designer), Bill Wilcock and Russel Drysdale, with sketches by both Gordon Andrews and Russel Drysdale.

Other banknotes of significance include one of the finest of only a handful known 50 Pounds 1918 "A" Type (R 67a). This is a note that serious type collectors and investors will be very excited about, as one hasn't been sighted in the market for a very long time! The estimate of \$200,000 could therefore prove to be conservative given this notes extreme rarity and attractive condition. Other key notes catalogued include a rare Rainbow Pound in superb VF condition, along with numerous Pre Federation Specimens and Issued notes,

Specimen and Star notes, as well as the usual superb selection of material in high grade including many George V issues.

The coin selection includes part one of our "One Tonne" collection, which has everything from bulk and mint issues up to Gem UNC Pre Decimal key date coins in it. Other coins of note include several superior grade Pre Decimal proof coins, including a 1934 Florin that has been described by several knowledgeable dealers as the finest George V Proof coin they have seen, a 1937 Crown and a rare Halfpenny 1926 purchased from M.R. Roberts in the 1980's. A superb milled edge silver Taylor Shilling circa 1855 is also on offer, which with an estimate of \$60,000 is sure to find a new home. The milled edge type is considerably rarer than the plain edge type, even though they command similar money at present, and this example has the fantastic provenance of being from both the Strathburn and A.H.F. Baldwin collections. Other key coins include a nice Counter stamped T. Knight Holely Dollar, and aVF Dump, rare Gold including the finest known Type I Obverse/Type II Reverse 1856 Half Sovereign, as well as Proclamation, World and GB coinage and much more.

Other Points Of Interest- With recent Market activity showing amazing strength in what is still somewhat difficult economic conditions, we have been surprised at just how well things have held up. Having said that, this auction presents an opportunity for the shrewd investor, as it contains many estate and unreserved items, as well as some stock that is the final remnants of the fallout from the GFC. Simply put, there are a number of bargains in this sale, due to a few vendors circumstances being still negatively affected by the past problems, and as a result, some reserves have been slashed to effect immediate sales. As things now look well on the way to improving, this could perhaps be a last chance to take advantage of such circumstances, as the general market and conditions continue to improve, and interest rates and inflation both increase, prices are again bound to soar. Don't just sit back and wait and see, or you will no doubt kick yourself in the months and years to come!

The new Greg McDonald guide has some very strong price growth in it, and the change to colour certainly adds to the book's appeal, so well done Greg!

Please Note: We will be accepting items for the next sale, Sale 72 (to be held in September 2010), from now until early/mid June 2010 or until we are full. Please contact us Now about any consignments you have that you wish to include in our next sale to ensure that you don't miss out.

Interstate Clients: - Sydney - Sheraton On The Park Hotel: 10am - 5pm - Tuesday 9th & Wednesday 10th of March - Strictly By Appointment Only. There will also be limited viewing for interstate dealers in our office: Friday 12th of March 9am-5pm - Again By Prior Appointment Only: Level 2 - Sonata, Cnr. Qld Ave & Surf Pde. Broadbeach.

**Phone:** (07) 55 380 300 or **Mobile:** 0412 722 043 (9-5 Mon to Fri Please.)

**Email:** [iagmail@optusnet.com.au](mailto:iagmail@optusnet.com.au) **Website:** [www.iagauctions.com](http://www.iagauctions.com)

### Important Auction Information:

**Viewing & Auction: Sofitel Gold Coast** (81 Surf Parade Broadbeach) - **Sorrento Room** (Level 3), on the day of Sale, 14th March 2010 from 12pm - 3pm. The Auction will then commence immediately at 3pm. We estimate that this sale will take approximately 3 hours to complete. There will also be limited viewing for interstate clients only on Friday 12th March, strictly by appointment only, in our offices from 9-5pm. The Oasis Shopping Centre (next door to the Sofitel Hotel, right in the heart of Broadbeach) has plenty of Car Parking for those wishing to attend the Auction. Viewing in person is highly recommended, especially on many of the lots without photographs and on the unreserved end lots.

**Interstate Viewing: 2 days in Sydney:-** At the Sheraton On The Park, Tuesday 9th and Wednesday 10th March, again by appointment only. Due to weight and travel restrictions, single highlight lots only will be available for viewing. Please call our office on (07) 55 380300 for any further details, or for more information regarding viewing times and appointments.

**Payment:** All amounts are in Australian Dollars. Credit Cards (accepted with signature & full address details): MasterCard, Visa & AMEX only. A Surcharge of 3% will also be applied to all AMEX card charges only.

**Buyers Premium:** A 16.5% total Buyers Premium will be added on to the knock-down price of all lots. Additional credit card charges will still be waived on any payments made with either Visa or MasterCard.

**Postal Bidders:** Will be advised of successful bids, and items will be dispatched only upon receipt of payment in full. Unsuccessful postal bidders will be notified, and will receive an auction prices realised. All postal bidders please note bids must be received no later than Friday 12th of March 2010. The earliest received bid will always get preference in the case of 2 or more identical high bids being registered.

**Postage and Insurance:** We have simplified all postage and packaging charges now. All postage will be charged at \$5 per 500 grams for registered mail, or at our cost price. Smaller lots under \$200 will be sent normal mail unless otherwise specified, and at no charge. Items over \$200 will not be insured at all unless it is requested. Insurance is charged at \$1 per \$100 upon request. This fee schedule is in line with all major auction houses, although to help defray this cost we have reduced the rate charged by around 50% to help you, whilst still aiming to cover some of the very large insurance costs we have to bear.

**Credit Cards:** Successful buyer's lots will be processed and dispatched for existing clients upon clearance of all funds. At our discretion we reserve the right to hold new clients lots who pay by credit card for up to 30 days. All postal bid payments are to be completely finalised within 14 days of sale please. For any more information please contact us during business hours at our office on (07) 55 380 300. Alternatively you can email us at: [iagmail@optusnet.com.au](mailto:iagmail@optusnet.com.au)

**Direct Bank Payments/Postage:** Please advise us if you are paying by electronic transfer, to ensure that your payments get processed effectively. Make sure to include your name and your invoice number in your payment. Please note that most items will usually not be dispatched until three days after cleared payment has been confirmed by us. Where possible, all items will then be processed and posted on either a Monday or Tuesday. Please note that postage and insurance on some of the heavy bulk lots may be substantial. Please contact us if you require further information.

**Bank:** ANZ Broadbeach  
**Account:** Paradise Coins Pty Ltd.  
 T/A International Auction Galleries  
**BSB:** 014 513  
**Account No:** 1027 43868

**Happy Collecting to All.**

### World Coins



- |   |   |           |
|---|---|-----------|
| 1 | <b>Austria Thaler 1628. Salzburg, scene of the consecration of the cathedral. Attractive.</b><br><i>gVF</i> | \$325-350 |
| 2 | Ceylon 25 Cents 1892.<br><i>UNC</i>   | \$50-70   |
| 3 | France 5 Francs 1811A. Napoleon. Nice old steel grey tone. <i>aEF</i>                                       | \$180-200 |
| 4 | German East Africa 20 Heller 1916T. Copper issue, Obverse B, Reverse A. <i>aEF</i>                          | \$90-100  |



5 German New Guinea 5 Mark 1894A. A more attractive Obverse than usual with some nice peripheral toning. Scarce. *gVF*  
\$1700-1800



6 Germany 5 Mark 1902, Baden. Jubilee. *gEF*  
\$480-500



7 Hawaii Set of 4 Silver issues. Dime, Quarter, Half Dollar and Dollar 1883 Kalakaua I. (4 coins). Old tone. *gVF-gEF*  
\$2000-2200

8 Hong Kong 1 Cent 1923. Full mint red. *Ch.UNC*  
\$40-50

9 Hong Kong 1 Cent 1926. Traces of red. *UNC*  
\$30-40



10 India Half Pagoda 1808, Madras. Scarce. *gEF*  
\$1200-1300

11 Keeling Cocos Islands 25 Cents 1913. *aFINE*  
\$90-100

12 Mauritius 20 Cent 1877H. *EF*  
\$50-70

13 New Zealand Florin 1935. *UNC*  
\$110-120



14 New Zealand "Waitangi" Proof set of 6 1935. Threepence to Crown, in old red cardboard box. Superb old dark red and blue toning. A superior set. Rare. *FDC*  
\$10000-11000

15 Russia 25 Kopeks 1866. *VF*  
\$30-40

16 Russia 50 Kopeks 1896. Star on rim type. *aEF*  
\$40-50

17 Straits Settlements 1 Cent 1901. Full mint red. Scarce. *Ch.UNC*  
\$350-375

18 Switzerland 5 Francs 1941. *Ch.UNC*  
\$70-80



19 USA Halfpenny 1723. Rosa Americana type. Scarce. *aVF*  
\$300-325



20 USA 50 Cents 1829. Large letters type. Attractive steel grey tone. *UNC*  
\$1200-1300

## Australian Proclamation Coins



- 21 **Bolivia Pillar 2 Reales 1775JR. Charles III.**  
*aEF* **\$170-180**

- 22 **Bolivia 8 Reales 1801PP. Charles III.**  
Potosi Mint. *gFINE* **\$180-200**



- 23 **Bolivia 8 Reales 1805PJ. Charles III.**  
Mint lustre around edge and dusty toning.  
*aEF* **\$280-300**



- 24 **GB Cartwheel Penny 1797 George III.**  
Traces of red lustre with a small edge  
knock on Reverse. *aUNC* **\$800-850**



- 25 **GB Gold Spade Guinea 1793. George III.**  
Mint lustre. Scarce this nice. *Ch.UNC* **\$1800-2000**



- 26 **GB Gold Spade Guinea 1798. George III.**  
Mint lustre. Scarce this nice. *Ch.UNC* **\$1700-1800**

- 27 **India Gold Pagoda, Mysore 17th C.**  
Two facing deities type. *VF* **\$260-270**

- 28 **India Gold Pagoda, Madras Presidency**  
C1740-1807. 3 Swami type. *VF* **\$260-270**

- 29 **Mexico 4 Reales Cob circa 1607-1620.**  
Phillip III. *aFINE* **\$90-100**



- 30 **Mexico 8 Reales Pillar Dollar 1759.**  
Scratch on reverse. *aUNC* **\$800-850**



- 31 **Mexico 8 Reales Pillar Dollar 1765MF.**  
Attractive old peripheral tone and mint lustre.  
Virtually as struck and very rare in this grade.  
*UNC* **\$2400-2500**

- 32 **Mexico 8 Reales 1790FM. Charles III.**  
Some edge toning and very minor edge  
damage at top. *gVF* **\$110-120**

- 33 **Netherlands 3 Gulden 1794. Utrecht.**  
*gF/aVF* **\$110-120**



34 Netherlands Ducaton 1759. West Friesland Silver Rider. *aVF*

\$180-200



40 Portugal Half Johanna 1779R. Maria I and Peter III. *gVF*

\$1100-1200



35 Netherlands Gold Ducat 1763. Mint lustre. *aUNC*

\$800-850



36 Netherlands Gold Ducat 1794. Mint lustre, slight scrape on Obverse. *gEF/aUNC*

\$680-700



37 Netherlands Gold Ducat 1807. *EF*

\$580-600



38 Peru 8 Reales 1795IJ. Charles III. Some mint lustre. *gEF*

\$300-325

39 Peru 8 Reales 1808JP. Charles III. *gFINE*

\$70-80

## Australian Pre Decimal Coins I

### Halfpenny

41 1911. Trace of mint red. *UNC* \$110-120

42 1912. Trace of mint red. *aU/UNC* \$70-80



43 1912. Mostly red. Possibly once cleaned. *aU/UNC* \$180-200

44 1916. Some mint red. *UNC* \$200-220

45 1917. Trace of red. *aUNC* \$80-100

46 1919. Trace of red. *gEF* \$30-40

47 1920. Trace of mint lustre. *aUNC* \$110-120

48 1931. Brown. *aUNC* \$80-100

49 1933. Trace of red. *aU/UNC* \$80-100

50 1934. Some mint red. *UNC* \$120-140

51 1935. Brown, with a trace of lustre. Notes on pack "specimen like". *UNC* \$120-140

|    |  |           |
|----|--|-----------|
| 52 | 1936. Mostly red. <i>UNC</i>                           | \$150-180 |
| 53 | 1940. Nearly full red, one spot on Reverse. <i>UNC</i> | \$120-140 |
| 54 | 1942. Trace of red. <i>aUNC</i>                        | \$70-80   |



## Penny

|    |   |           |
|----|---|-----------|
| 55 | 1911. Trace of mint lustre. Nice strike. <i>UNC</i> | \$150-200 |
|----|---|-----------|



|    |  |           |
|----|--|-----------|
| 56 | 1911. Lightly cleaned of some surface toning. <i>UNC</i> | \$450-500 |
|----|--|-----------|

|    |  |           |
|----|--|-----------|
| 57 | 1917. Trace of mint lustre. <i>UNC</i> | \$120-140 |
|----|--|-----------|



|    |   |           |
|----|---|-----------|
| 58 | 1919 dot under. Red and green lustre. Possibly once cleaned. <i>UNC</i> | \$250-300 |
|----|---|-----------|

|    |  |           |
|----|--|-----------|
| 59 | 1925. Nearly full centre diamond. <i>gVF</i> | \$270-280 |
|----|--|-----------|

|    |                                   |         |
|----|-----------------------------------|---------|
| 60 | 1934. Trace of red. <i>aU/UNC</i> | \$70-80 |
|----|-----------------------------------|---------|

|    |                            |           |
|----|----------------------------|-----------|
| 61 | 1936. Some red. <i>UNC</i> | \$140-150 |
|----|----------------------------|-----------|

|    |                                    |         |
|----|------------------------------------|---------|
| 62 | 1940. Trace of lustre. <i>aUNC</i> | \$40-50 |
|----|------------------------------------|---------|

|    |                                   |         |
|----|-----------------------------------|---------|
| 63 | 1941. Trace of red. <i>aU/UNC</i> | \$50-60 |
|----|-----------------------------------|---------|

|    |                                       |         |
|----|---------------------------------------|---------|
| 64 | 1942Y. Trace of lustre. <i>aU/UNC</i> | \$50-60 |
|----|---------------------------------------|---------|

|    |                                    |         |
|----|------------------------------------|---------|
| 65 | 1943Y. Nearly full red. <i>UNC</i> | \$50-60 |
|----|------------------------------------|---------|

|    |  |           |
|----|--|-----------|
| 66 | 1947Y. Mint red and brown. Some old scratches/metal flaws on head? Scarce. <i>aUNC</i> | \$180-200 |
|----|--|-----------|

|    |                                  |          |
|----|----------------------------------|----------|
| 67 | 1950Y. Traces of red. <i>UNC</i> | \$80-100 |
|----|----------------------------------|----------|

## Threepence

|    |  |           |
|----|--|-----------|
| 68 | 1911. Touched off on L/H Pearls. Toning spot on Reverse. <i>aUNC</i> | \$120-140 |
|----|--|-----------|



|    |  |           |
|----|--|-----------|
| 69 | 1920. Scarce date. Possibly lightly polished. <i>gEF</i> | \$180-200 |
|----|--|-----------|

|    |   |          |
|----|---|----------|
| 70 | 1921M. A little flat on star. <i>aU/UNC</i> | \$80-100 |
|----|---|----------|

|    |   |           |
|----|---|-----------|
| 71 | 1922. Toning spot on Reverse. <i>aUNC</i> | \$140-150 |
|----|---|-----------|

|    |   |           |
|----|---|-----------|
| 72 | 1927. Minor variety, dots in Obverse fields. <i>UNC</i> | \$160-180 |
|----|---|-----------|

|    |  |           |
|----|--|-----------|
| 73 | 1934/3. Overdate. Nice Obverse. <i>gVF/aEF</i> | \$280-300 |
|----|--|-----------|

|    |                  |           |
|----|------------------|-----------|
| 74 | 1935. <i>UNC</i> | \$200-220 |
|----|------------------|-----------|

|    |                         |           |
|----|-------------------------|-----------|
| 75 | 1936. <i>UNC/Ch.UNC</i> | \$100-110 |
|----|-------------------------|-----------|

## Sixpence

|    |  |           |
|----|--|-----------|
| 76 | 1910. Some tone and a few surface marks. <i>aUNC</i> | \$110-120 |
|----|--|-----------|

|    |                   |           |
|----|-------------------|-----------|
| 77 | 1926. <i>aUNC</i> | \$110-120 |
|----|-------------------|-----------|

|    |                   |           |
|----|-------------------|-----------|
| 78 | 1927. <i>aUNC</i> | \$110-120 |
| 79 | 1928. <i>aUNC</i> | \$110-120 |
| 80 | 1928. <i>aUNC</i> | \$70-80   |



|    |  |           |
|----|--|-----------|
| 81 | 1934. Slightly flat star, milky tone. <i>UNC</i> | \$400-450 |
| 82 | 1935. <i>gEF/aUNC</i>                            | \$120-140 |
| 83 | 1936. <i>UNC/Ch.UNC</i>                          | \$180-200 |

## Shilling

|    |  |           |
|----|--|-----------|
| 84 | 1910. Small reverse flan flaw. <i>EF</i> | \$80-100  |
| 85 | 1915H. Key date. <i>gF/aVF</i>           | \$140-150 |
| 86 | 1916. Minor contact marks. <i>aUNC</i>   | \$100-110 |
| 87 | 1917. <i>UNC/Ch.UNC</i>                  | \$475-500 |
| 88 | 1921 Star. Key date. <i>gF/aVF</i>       | \$140-150 |
| 89 | 1927. Heavy contact marks. <i>EF</i>     | \$60-70   |
| 90 | 1931. Feathers a bit flat. <i>gEF</i>    | \$60-70   |
| 91 | 1933. Key date. <i>VG</i>                | \$40-50   |
| 92 | 1941. ACGS graded MS 64. <i>Ch.UNC</i>   | \$90-100  |

## Florin

|    |                                     |           |
|----|-------------------------------------|-----------|
| 93 | 1911. Small edge knocks. <i>aVF</i> | \$120-140 |
| 94 | 1914H. Scarce date. <i>FINE</i>     | \$90-100  |

|    |                  |         |
|----|------------------|---------|
| 95 | 1917. <i>aEF</i> | \$60-80 |
|----|------------------|---------|



|    |  |           |
|----|--|-----------|
| 96 | 1927. Slight orange peel fields. <i>aU/UNC</i> | \$280-300 |
|----|--|-----------|

|     |   |           |
|-----|---|-----------|
| 97  | 1927 Canberra. <i>UNC</i>                     | \$60-80   |
| 98  | 1928. Some contact marks. <i>EF</i>           | \$120-140 |
| 99  | 1931. Light tone with some lustre. <i>UNC</i> | \$180-200 |
| 100 | 1932. Key date. Worn. <i>Poor/VG</i>          | \$60-80   |

|     |                              |           |
|-----|------------------------------|-----------|
| 101 | 1932. Key date. <i>aFINE</i> | \$100-110 |
|-----|------------------------------|-----------|

|     |  |           |
|-----|--|-----------|
| 102 | 1934/5 Melbourne Centenary. <i>aEF</i> | \$220-240 |
|-----|--|-----------|



|     |   |           |
|-----|---|-----------|
| 103 | 1934/5 Melbourne Centenary. <i>aU/UNC</i> | \$350-400 |
|-----|---|-----------|

|     |  |         |
|-----|--|---------|
| 104 | 1935. Dusty tone. Couple of Obverse scratches else <i>UNC. gEF</i> | \$60-80 |
|-----|--|---------|

|     |  |         |
|-----|--|---------|
| 105 | 1936. Couple of minor Obverse marks. <i>aUNC</i> | \$80-90 |
|-----|--|---------|

|     |                     |           |
|-----|---------------------|-----------|
| 106 | 1938. <i>Ch.UNC</i> | \$160-170 |
|-----|---------------------|-----------|

|     |  |         |
|-----|--|---------|
| 107 | 1939. Key date. Some contact marks. <i>gVF/aEF</i> | \$60-80 |
|-----|--|---------|

|     |                         |           |
|-----|-------------------------|-----------|
| 108 | 1956. <i>Ch.UNC/GEM</i> | \$160-170 |
|-----|-------------------------|-----------|

## Crown

- 109 1937. *aU/UNC* \$40-50
- 110 1938. Some minor marks. *aVF* \$90-100



- 113 One Pound Queensland National Bank Specimen. Brisbane, 2-1-1893 (MVR Var 1c). Printed by Perkins, Bacon and Co. Different underprint to the final issued note. Extremely rare. *EF*

\$40000-45000

## Australian Pre Federation Banknotes



- 111 One Pound Ellis Read and Co, (to the Australian Joint Stock Bank Bowen), Albert River, Gulf of Carpentaria Qld. Burketown 1-8-1866 fully signed and issued. Ink stamp on front Commercial Banking Co. Sydney. (MVR p44). Slightly frayed edges, and pin holes. Ex the Wright, Raymond, Wills and GH Abbott collections. Very rare. *VF*

\$10000-11000



- 114 One Pound Commercial Banking Company Sydney, Sydney. Fully signed and issued 1-10-1904 (MVR 5b). Couple of pinholes and small edge splits, but with good colour and paper. Very rare as an issued note. An attractive and popular design. *gFINE*

\$32500-35000



- 112 One Pound Bank of Adelaide Specimen. Adelaide 1-6-1893 (MVR 2a). Rare. *UNC*

\$21000-22000



- 115 One Pound National Bank of Australia, Melbourne 1-1-1906. (MVR 4mb). Fully signed and issued. This is the issue that was used as one of our two most well known Superscribes, but issued notes like this are far rarer. One of the finest known, this note is marginally superior to the one we sold in our last sale. Attractive colour and nice paper, with some old folding. Rare. *VF*

\$46000-48000



116 One Pound Queensland Government, Brisbane 2-7-1906. (MVR 2). Fully signed and issued general issue note . An attractive example in better grade than often seen, and an interesting note. Very rare. *FINE*

\$58000-60000



117 Five Pound Bank of New South Wales, Sydney 2-10-1882. Fully signed and issued. (MVR 7c). Ex the New England Hoard. In superb condition. *VF*

\$36000-38000



119 Ten Pound Bank of Adelaide Specimen. Adelaide 1-6-1893 (MVR 2a). Extremely rare, believed to be only 2 known. *aUNC*

\$28000-30000



118 Ten Pound London Chartered Bank of Australia Specimen, Victoria. Melbourne 1-6-1891. (MVR 2d). Rare. *aUNC*

\$25000-26000



120 Ten Pounds Western Australian Bank Specimen. Perth 1-1-1897 (MVR 3c). Very rare. *UNC*

\$32000-34000



121 Twenty Pound Bank of Tasmania B/W Specimenproof. Launceston, April 1854 (MVR 3). Numbered and signed in pencil. Rarely seen in high denominations, and for this domicile. Extremely rare, if not unique. *EF*  
\$30000-32000



124 One Pound Commercial Bank of Sydney Specimen Proof. Sydney 18--. (MVR 3). Printed by W & K Johnston Edinburgh for Cowan and Co. Sydney. This and the following 4 notes are part of a recent find, several with unique designs and all extremely rare with between 1 and 3 examples known. *gEF*  
\$30000-35000



122 Twenty Pound Bank of Adelaide Specimen. Adelaide 1-6-1893 (MVR 2a). Extremely rare, believed to be only 2 known. *aUNC*  
\$32000-34000



125 Five Pound Commercial Bank of Sydney Specimen Proof. Sydney 18--. (MVR 3). Printed by W & K Johnston Edinburgh for Cowan and Co. Sydney. Very rare. *gEF*  
\$30000-35000



123 Fifty Pound London Bank of Australia Limited Specimen, Victoria. Melbourne 1-12-1908. (MVR 2g). Very rare. *aUNC*  
\$36000-38000



126 Ten Pound Commercial Bank of Sydney Specimen Proof. Sydney 18--. (MVR 3). Printed by W & K Johnston Edinburgh for Cowan and Co. Sydney. 3 small punch holes. Very rare. *aUNC*  
\$36000-38000



127 Twenty Pound Commercial Bank of Sydney Specimen Proof. Sydney 18--. Printed by W & K Johnston Edinburgh for Cowan and Co. Sydney. 3 small punch holes. Striking orange and blue design. Very rare. *aUNC*

\$40000-45000



128 Fifty Pound Commercial Bank of Sydney Specimen Proof. Sydney 18--. (MVR 3). Printed by W & K Johnston Edinburgh for Cowan and Co. Sydney. Extremely rare. *gEF*

\$42500-45000

### Australian Superscribed Banknotes

### Australian War Related Banknotes



129 One Pound 1910 The National Bank of Australia, Melbourne. Superscribed Collins-Allen (S 50). Some very minor edge splits and a few pinholes. An attractive, above average example with great eye appeal. Rare in this grade. *gFINE*

\$32000-34000



130 Sixpence Hay Internment Camps WW II. Camp 7, 1-3-1941 Mendel-Stahl. Rare. *VF*

\$6000-6500

## Australian Pre Decimal Banknotes



- 131 Shilling Hay Internment Camps WW II. Camp 7, 1-3-1941 Mendel-Stahl. Rare. *aU/UNC*  
\$21000-22000



- 132 Two Shillings Hay Internment Camps WW II. Camp 7, 1-3-1941 Mendel-Stahl. Rare. *UNC*  
\$21000-22000

### Ten Shillings

- 133 1918 Cerutti-Collins (R 3b). Worn, dirty, and with some edge tears. *VG*  
\$750-800
- 134 1928 Riddle-Heathershaw (R 7). A little dirty. *FINE*  
\$650-700
- 135 1928 Riddle-Heathershaw (R 7). Crisp. *VF*  
\$2200-2400
- 136 1928 Riddle-Heathershaw (R 7). *gVF/aEF*  
\$3200-3400



- 137 1928 Riddle-Heathershaw (R 7). Crisp, with centre fold and light handling. A lovely type note. *gEF/aUNC*  
\$10000-11000



- 138 1928 Riddle-Heathershaw (R 7). Consecutive pair. Lightest trace of a centre bend, with fully crisp and original fresh paper. As good a pair as they come. Rare as such. *UNC*  
\$58000-60000

- 139 1933 Riddle-Sheehan (R 8b). Thin signature type. Three folds. *gVF*  
\$4250-4500



- 140 1933 Riddle-Sheehan (R 9). No Imprint type. Crisp, original note with sheen, and a centre fold and some edge flicks. Scarce. *aUNC*  
\$17000-18000

- 141 1934 Riddle-Sheehan (R 10). Red overprint. Crisp, with heavy folding. *gF/aVF*  
\$1200-1400

- 142 1936 Riddle-Sheehan (R 11). Type note. Fresh, with a centre fold. *aUNC*  
\$4500-5000

- 143 1939 Sheehan/McFarlane (R 12). Trace of centre fold. *aUNC*  
\$1100-1200

- 144 1939 Sheehan-McFarlane (R 12). *aU/UNC*  
\$1800-2000

- 145 1942 Armitage-McFarlane (R 13). *aU/UNC*  
\$650-700

- 146 1949 Coombs-Watt (R 14). *aU/UNC*  
\$650-700

- 147 1949 Coombs-Wilson (R 15). *aUNC*  
\$500-550

- 148 1954 Coombs-Wilson (R 16). Trace of light centre fold. Consecutive pair. *aU/UNC*  
\$500-550

- 149 1961 Coombs-Wilson (R 17). *UNC*  
\$200-220

- 150 1961 Coombs-Wilson (R 17). Consecutive pair. *UNC*  
\$400-450

## One Pound



- 151 1914 Collins-Allen (R 18b). Blue serials type. Nice colour and paper. *gF/aVF*  
\$9000-9500

- 152 1914 Collins-Allen (R 18d). Last suffix T type, also with two different seriffed 1's. Scarce. *aVF*  
\$5000-5500

- 153 1914 Collins-Allen (R 18e). Attractive example. Scarce. *VF*  
\$6500-7000



- 154 1914 Collins-Allen (R 18e). Great colour and strong paper. A small pinhole and minor ink adhesion on back. Scarce. *aEF/EF*  
\$21000-22000

Download Prices Realised from our website:

[www.iagauctions.com](http://www.iagauctions.com)

From Tuesday afternoon 16th March 2010, after all postal bids are finalised.

For more details, contact us at:

[iagauctions@optusnet.com.au](mailto:iagauctions@optusnet.com.au)



155 1914 Collins-Allen (R 20a). Emergency issue “Rainbow Pound”, No. type. Superb bright colour on the front, with great eye appeal that highlights how attractive this design is. A couple of very minor edge splits are the only detractor of this otherwise fault free example. One of the finest known, and seldom seen in this high grade, with this being the only such example publicly offered in many years. Ex Downies Sale April 1980. Very rare.  
VF

\$100000-110000

156 1918 Cerutti-Collins (R 21). Good type note. aVF  
\$1500-1600

157 1926 Kell-Collins (R 24). Crisp, heavy folds. aFINE  
\$600-700

158 1927 Riddle-Heathershaw (R 26). Crisp. aVF  
\$500-550

159 1927 Riddle-Heathershaw (R 26). Crisp. gVF/aEF  
\$700-750



160 1927 Riddle-Heathershaw (R 26). Consecutive trio. EF/gEF  
\$7000-7500

161 1932 Riddle-Sheehan (R 27a). Thick signature type. gF/aVF  
\$1200-1400

162 1933 Riddle-Sheehan (R 28). Centre bend and light handling. aUNC  
\$1400-1500

163 1933 Riddle-Sheehan (R 28). Lovely fresh note with only a trace of minor handling and a few tiny marks. aU/UNC  
\$3700-3800



164 1933 Riddle-Sheehan (R 28). Consecutive pair. Tellers flicks. UNC  
\$8800-9000



165 1933 Riddle-Sheehan (R 28). Consecutive pair. UNC  
\$9500-10000

166 1938 Sheehan-McFarlane (R 29). Trace of centre fold. aUNC  
\$900-950

- 167 1938 Sheehan-McFarlane (R 29).  
Consecutive pair. *UNC*  
\$3800-4000
- 168 1938 Sheehan-McFarlane (R 29).  
Consecutive pair. *UNC*  
\$3800-4000
- 169 1942 Armitage-McFarlane (R 30a).  
Slight stain on note. *UNC*  
\$280-300
- 170 1942 Armitage-McFarlane (R 30a).  
Consecutive pair. *UNC*  
\$1100-1200
- 171 1942 Armitage-McFarlane (R 30a).  
Consecutive trio. *UNC*  
\$1600-1700
- 172 1942 Armitage-McFarlane (R 30b).  
Consecutive pair. *UNC*  
\$1100-1200
- 173 1949 Coombs-Watt (R 31).  
Consecutive pair. *UNC*  
\$1300-1400
- 174 1949 Coombs-Watt (R 31). Consecutive pair,  
and to the previous lot. *UNC*  
\$1300-1400
- 175 1952 Coombs-Wilson (R 32). Consecutive  
run of 4. Fresh, with centre bend. *aUNC*  
\$2000-2200
- 176 1953 Coombs-Wilson (R 33).  
Consecutive pair. *UNC*  
\$300-350
- 177 1953 Coombs-Wilson (R 33). Scarce  
consecutive run of 18. Light centre bend.  
*UNC*  
\$5000-5500
- 178 1961 Coombs-Wilson (R 34a).  
Consecutive pair. *UNC*  
\$300-350
- 179 1961 Coombs-Wilson (R 34a and R 34b).  
Two consecutive pairs. Fresh, with very  
minor handling. *aU/UNC*  
\$325-350

- 180 1961 Coombs-Wilson (R 34b). Scarce  
consecutive run of 10. *UNC*  
\$2500-2700

## Five Pound



- 181 1918 Cerutti-Collins (R 37b). Lovely  
bold colour and good paper. A superior and  
attractive type example without breaking  
the bank. *gVF*  
\$13500-14000



- 182 1918 Cerutti-Collins (R 37b). Very rare  
this grade. Lovely colour, some folds but  
with good paper. A great type note. Ex the  
"Blue" collection. *aEF*  
\$35000-37500



- 183 1924 Kell-Collins (R 38a). Black signature  
type. One of the finest known. Crisp paper,  
with some minor edge folding & trace of a  
centre fold. Ex the "Blue" collection.  
*gEF/aUNC*  
\$42500-45000



184 1927 Kell-Heathershaw (R 39). Trace of a light centre fold. Lovely, fresh original note, and one of the finest known. *aUNC*

\$58000-60000



185 1927 Riddle-Heathershaw (R 41). Extremely rare, with good strong original paper & colour. Some bends & folds. In the top 5 known. Ex the "Blue" collection. *gVF*

\$62500-65000

- |   |  |
|---|--|
| <p>186 1927 Riddle-Heathershaw (R 42).<br/><i>aVF/VF</i></p> <p style="text-align: right;">\$2900-3000</p>                                  | <p>191 1941 Armitage-McFarlane (R 46).<br/>Consecutive trio. Lovely fresh notes.<br/>Hint of centre bend. <i>UNC</i></p> <p style="text-align: right;">\$10000-11000</p> |
| <p>187 1927 Riddle-Heathershaw (R 42).<br/>Crisp paper. <i>VF</i></p> <p style="text-align: right;">\$3000-3300</p>                         | <p>192 1949 Coombs-Watt (R 47). <i>aEF</i></p> <p style="text-align: right;">\$600-650</p>   |
| <p>188 1927 Riddle-Heathershaw (R 42). Crisp<br/>paper, a great type note. <i>gVF/aEF</i></p> <p style="text-align: right;">\$4000-4250</p> | <p>193 1949 Coombs-Watt (R 47). <i>UNC</i></p> <p style="text-align: right;">\$3700-3800</p>   |
| <p>189 1933 Riddle-Sheehan (R 44b). White face<br/>of King type. <i>aVF</i></p> <p style="text-align: right;">\$3000-3200</p>               | <p>194 1952 Coombs-Wilson (R 48). <i>UNC</i></p> <p style="text-align: right;">\$3800-4000</p>   |
| <p>190 1939 Sheehan-McFarlane (R 45). Scarce.<br/><i>UNC</i></p> <p style="text-align: right;">\$15000-16000</p>                            | <p>195 1952 Coombs-Wilson (R 48). Consecutive<br/>pair. Have been lightly cleaned. <i>EF</i></p> <p style="text-align: right;">\$1700-1800</p>                           |
| <p>196 1954 Coombs-Wilson (R 49).<br/>Commonwealth issue. <i>UNC</i></p> <p style="text-align: right;">\$800-900</p>                        |  |



- 197 1960 Coombs-Wilson (R 50). Crisp, light handling. *aU/UNC* \$425-450
- 198 1960 Coombs-Wilson (R 50). Consecutive pair. Hint of a centre fold. *aU/UNC* \$1100-1200



## Ten Pound



- 199 1927 Riddle-Heathershaw (R 55). Crisp, with a tiny edge split repair, and an attractive type note. *gVF/aEF* \$16000-17000



- 200 1927 Riddle-Heathershaw (R 55). Originally sold in 2004 at a higher grade, but qualified at this grade, and with a very tiny edge split. Still, a very good type note. *gVF/aEF* \$17000-18000



- 201 1932 Riddle-Sheehan (R 56). Very rare, one of the lowest mintage notes in the series. 2 pinholes, one minor and one a bit larger. *aVF* \$27000-28000

- 202 1934 Riddle-Sheehan (R 57). Lovely original note with a light centre fold and some slight handling. Ex the Vort Ronald Collection and Nobles Sale 24, and originally sold as UNC and subsequently recorded in "Australian Banknote Pedigrees" as being in UNC grade. Also the plate note in "Australian Banknotes", p 205. Rare. *aUNC* \$22000-24000
- 203 1943 Armitage-McFarlane (R 59). *gVF/aEF* \$900-950



- 204 1943 Armitage-McFarlane (R 59). Consecutive pair. *UNC* \$14000-15000



- 205 1949 Coombs-Watt (R 60). Consecutive pair. Lovely fresh notes. Trace of centre fold. *UNC* \$11000-12000
- 206 1952 Coombs-Wilson (R 61). Lightly cleaned. *gVF* \$1,700-1800
- 207 1954 Coombs-Wilson (R 62). Commonwealth issue. Consecutive pair. *UNC* \$3700-3800
- 208 1954 Coombs-Wilson (R 62). Consecutive run of 4. Light trace of centre bend. *UNC* \$7000-7500

## Postal Bidders:

Please submit all postal bids  
by Friday 12th March 2010



209 **Fifty Pound** 1920 Cerutti-Collins (R 67a). The extremely rare Small Serrifed “A “ type is probably the third most important Pre Decimal banknote, behind only the 50 and 100 Pounds Collins-Allen. Public record shows only 2 examples recorded, with the last one selling back in 1994, although one or two others are thought to exist. This is a new, unrecorded example, which adds further to its significance. Only the second example we have ever sold, with the other a low grade example. A supreme rarity that may well not be seen again for a long time.  
gVF

\$230000-240000

Australian Pre Decimal Specimen Banknotes



210 **Ten Pound** 1954 Coombs-Wilson Type 1. Overprinted “Specimen” in red on both sides on a low numbered circulation note WA 00 000 034. A recent discovery, and one of only three known. Torn on the bottom edge and top edge split, with some general wear and light stains and a smallish hole in the watermark also. Qualified as such, but still an extremely rare example, and priced at one tenth of the cost of the last example sold (IAG Sale 70). aVF

\$20000-22000

## British Coins

211 Halfpenny 1864. Some mint red. Scarce. *UNC*

\$350-400

212 Penny 1862. Light traces of mint lustre. Scarce. *gEF*

\$350-400

213 Threepence 1762 George III. NGC Graded & cased MS 62. Attractive tone. *UNC*

\$110-120



214 Fourpence 1660-85 Charles II. Third issue. (S.3324). Attractive tone in devices. *gVF*

\$425-450



215 Shilling 1654 Commonwealth. (S. 3217var MM). MM Sun. Scarce. *aVF*

\$900-1000

216 Halfcrown 1698 William and Mary. (S. 3434). *FINE*

\$250-280



217 Halfcrown 1746/5 George II. Lima under bust (S. 3695A). Old deep tone with mint lustre. *gEF/aUNC*

\$800-850



218 Halfcrown 1746 George II. Lima under bust. (S. 3695). *gVF/aEF*

\$380-400

219 Halfcrown 1825 George IV. Old tone. *gEF*

\$200-220



220 Crown 1662 Charles II. First bust, rose under head on Obverse. Small cut on nose. *FINE*

\$400-450



221 Crown 1679 Charles II. Fourth bust (S. 3359). *gF/aVF*

\$650-750



222 Crown 1819 LX George III. Superb old tone. *UNC*

\$1100-1200



223 Counterstamped Dollar 1804 George III. Emergency issue, oval counterstamp. Struck on a Mexico 8 Reales 1794FM. *gVF*  
\$800-900



226 Gold Two Guineas 1738 George II. (S. 3677B). With old ticket, grading it as Old Red Tone Extremely Fine. Catalogues at 2100 Pounds in EF. *aEF*  
\$3000-3200



224 Gold Half Laurel 1623-24 James I. (S. 2641a). MM Lis. Attractive round coin with a good portrait. *VF*  
\$1900-2000



227 Gold Two Guineas 1738 George II. (S. 3667a). Scarce. *aEF/EF*  
\$3200-3400



225 Gold Unite 1625-49 Charles I. Tower mint, group B, MM heart. (S. 2688). Rare and superb. *aEF*  
\$7000-8000



228 Gold Five Guineas 1676 Charles II. Octavio edge (S. 3328a). Superb eye appeal with a strong portrait and nice Reverse. Very rare. *aEF*  
\$15000-16000



229 Gold Half Sovereign 1818 George III. (S. 3786). With old ticket, grading it as Gem Brilliant UNC. Catalogues at 750 Pounds in UNC. *Ch.UNC*

\$1100-1200

230 Proof Gold Sovereign 1981. In case of issue. *FDC*

\$280-300

Australian Pre Decimal Starnotes

Ten Shillings

231 1949 Coombs-Watt (R 14s). *gFINE*

\$2800-3000



232 1952 Coombs-Wilson (R 15s). Light trace of a centre fold. Rare. *UNC*

\$52500-55000

One Pound



233 1961 Coombs-Wilson (R 17s). Light handling and full original sheen. Printed slightly off centre on the front. *aUNC*

\$9000-9500



234 1949 Coombs-Watt (R 31s). A good type note. Scarce. *aEF*

\$22000-23000



- 235 1953 Coombs-Wilson (R 33s). Two folds but an attractive type note. *aEF* \$6000-6500



- 236 1961 Coombs-Wilson (R 34bs). Some minor handling and a nice type note. *gEF/aUNC* \$7500-8000

### Five Pound

- 237 1960 Coombs-Wilson (R 50s). Has been cleaned, however looks far better than it is graded. A good type note. *aVF* \$4200-4400



- 238 1960 Coombs-Wilson (R 50s). Rare this grade. Ex the "Blue" collection. *gEF* \$27500-30000

- 240 1969 Phillips-Randall (R 73s). Crisp. *aEF* \$1100-1200
- 241 1969 Phillips-Randall (R 73s). Lightest hint of a bend. *UNC* \$2700-2800

### Five Dollar



- 242 1967 Coombs-Randall (R 202s). Fresh original note, with a light trace of a tellers flick and centre bend. Scarce. *UNC* \$7000-7500



- 243 1967 Coombs-Randall (R 202s). Consecutive pair, and to the previous note. Fresh original notes, with a light trace of a tellers flick and centre bend. Scarce. *UNC* \$14000-15000

## Australian Decimal Starnotes

### One Dollar

- 239 1966 Coombs-Wilson (R 71s). *UNC* \$3100-3200

**Vendors:**

Accepting consignments now for our next auction Sale 72 to be held September 2010.

Closing date mid July or until full.

For more information visit our website at:

**[www.iaguactions.com](http://www.iaguactions.com)**

## Australian Decimal Specimen Banknotes



244 Complete Album of 11 Specimen notes 1966, 1967 and 1973. Type 1 \$1 to \$20 complete (two of each, including two \$5), as well as one Type 3 \$50 all in the one presented set. Presented to Monty Brown, (Manager of the Note Printing Works at Fitzroy at the time of decimalization) by Bill Wilcox, the General Manager of NPB 1962-1969. Also comes with a letter from Lady Janet Clunies-Ross, wife of Sir Ian Clunies-Ross, who was a leading scientist and Chairman of the CSIRO, and who is also featured on the reverse of the \$50 note. The book is signed in the front cover by Lady Janet Clunies-Ross, Gordon Andrews and Russel Drysdale (both with original sketches), and Bill Wilcox. The set also includes an old photo of various designers and board members associated with this project. The only completed set I have seen with both the \$5 and \$50 officially inserted into the album. Current catalogue price for the individual notes in this set only is \$282,000, and this set should command a large premium on top of this due to its provenance. A highly significant item. *UNC*

\$140000-150000

### Five Dollar



245 1974 Phillips-Wheeler Type 3. (SP 18). High catalogue value of \$45,000. Rare. *UNC*

\$22000-24000

### Ten Dollar



246 1988 Johnston-Fraser Polymer Type 5. (SP 29a). Catalogues at \$38,000. Scarce. *UNC*

\$22000-24000

**Twenty Dollar**



247 **1993 Fraser-Evans Polymer Type 5. (SP 31).  
High catalogue value of \$80,000. Rare.  
UNC**  
**\$25000-26000**



248 **1974 Phillips-Wheeler Type 3. (SP 20).  
Slight ink fade and minor mark due to  
storage, and bargain priced as such.  
Rare. aU/UNC**  
**\$17000-18000**



*Clare Merry Christmas. Uncle Bernie 25.12.94.*

249 **1994 Fraser-Evans Polymer Type 5. (SP 32). In original presentation Note Printing Pack. Specimen No. 0001.  
This is the only known numbered decimal specimen banknote ever seen that carries the Number 1 Specimen  
number. Inscribed on the inside of the pack "Clare, Merry Christmas. Uncle Bernie 25-12-94." Signed and  
dated on the back "Bernie Fraser 25-12-94". A presented note by the then Governor of the Reserve Bank,  
Bernie Fraser. Of the highest importance as such, and possibly a unique example.  
UNC**

**\$80000-85000**



250 **One Hundred Dollar** 1984 Johnston-Fraser Type 4. (SP 28). Catalogues at \$52,000. Rare.  
*UNC*

\$24000-26000

### World Gold Coins

251 Austria gold 25 Shilling 1928. *Ch.UNC*  
\$260-280

252 Canada Proof gold \$100 1980. In case of issue. Tone spot on Obverse. *FDC*  
\$300-320



253 France 2 Louis D'Or gold 1786A. Louis XVI, Paris mint. Attractive mint bloom, sharply struck. Scarce. *EF/gEF*  
\$1600-1700



254 France 2 Louis D'Or gold 1787K. Louis XVI, Bordeaux mint. Scarce. *aEF*  
\$1500-1600



255 Germany Proof 10 Mark gold 1888A Prussia. Friedrich III. *FDC*  
\$700-750



256 Japan gold 20 Yen. Year 3 (1914), Taisho era. Rare. *aU/UNC*  
\$3000-3200



257 USA gold 5 Dollar (half eagle) 1813. Capped Liberty head type. Ex Stacks sale 24-4-2007. Only minimal wear, with superb eye appeal, and a great type coin. Very rare. *UNC*  
\$14000-15000

## Australian Gold Coins

### Half Sovereign



- 258 1856 Sydney Mint Type II. Recently discovered buried in the ground. Slight surface and edge scratches, and has been lightly polished, however with minimal actual wear. *gVF*  
**\$2800-3000**

- 259 1866 Sydney Mint. Some damage. *VG/aFINE*  
 \$150-160



- 260 1893S Veiled Head. Scarce. *Ch.UNC/GEM*  
**\$5500-6000**

- 261 1908S and 1908M Edward VII. Ex Downies and Sherwoods. (2 coins). *gFINE*  
 \$300-320

- 262 1906S, 1910S Edward VII (2). Ex Downies and Sherwoods. (3 coins). *gFINE*  
 \$450-475

- 263 1915S George V. *EF*  
 \$160-170



- 264 1918P. Key date. A nice example, well struck up. Rare. *aUNC*  
**\$6250-6500**

### Sovereign

- 265 1871S Young Head St. George. Ex KJC. *VF*  
 \$300-320

- 266 1874M Young Head St. George. Ex KJC. *aEF*  
 \$325-350

- 267 1880M Young Head St. George. Ex KJC. *VF/aEF*  
 \$310-320

- 268 1887M Young Head St. George. Ex KJC. *gEF*  
 \$325-350

- 269 1889M Jubilee Head. Ex KJC. *gEF*  
 \$310-320

- 270 1890S Jubilee Head. Ex KJC. *aEF*  
 \$300-320

- 271 1892S Jubilee Head. Ex KJC. *gEF/aUNC*  
 \$320-340

- 272 1893M Veiled Head. Ex KJC. *aEF*  
 \$300-320

- 273 1901S Veiled Head. Ex KJC. *EF*  
 \$300-320

- 274 1914S George V. *EF*  
 \$290-300



- 275 1922S George V. Some mint lustre. A very rare date. *EF*  
**\$27000-28000**

- 276 Assorted heads, 1887M, 1893M, 1899M & 1902S. (4 coins). *VF-EF*  
\$900-1000
- 277 Cased Monetarium set of 10 George V. 1911S, 1912S, 1913M, 1914S, 1915S, 1916S, 1917P, 1918P, 1919P, 1920 P. (10 coins). *gVF-EF*  
\$3000-3200

### Modern Australian Bullion Coins

- 278 1986 Gold Nugget Proof quarter ounce and one tenth ounce. In case of issue. *FDC*  
\$325-350
- 279 \$10 2007 Ashes Gold Proof one tenth ounce. In case of issue. *FDC*  
\$100-110
- 280 \$200 Gold UNC 1980. In plastic packs of issue. (2 coins). *UNC*  
\$500-525

### First Prefix Australian Banknotes

#### Ten Shillings

- 281 1954 Coombs-Wilson AC/00. A little dirty. *VG/aFINE*  
\$150-160

#### One Pound

- 282 1953 Coombs-Wilson HA/00. *aVF*  
\$350-400

#### Ten Pound



- 283 1954 Coombs-Wilson WA/00. Scarce. *gEF/aUNC*  
\$2200-2400

#### One Dollar

- 284 1966 Coombs-Wilson AAA. Consecutive pair. Centre roll fold and slight tellers flick. *aUNC*  
\$1400-1600

#### Two Dollar

- 285 1966 Coombs-Wilson FAA. Low numbered archival note with the usual tellers flick. *aU/UNC*  
\$1800-2000

#### Five Dollar

- 286 2001 Polymer MacFarlane-Evans AA 01. Special low numbered (first 500 issued) tender issue. Serials AA 01 000 334/5. Consecutive pair. Catalogues at \$1,100. *UNC*  
\$450-500

#### Fifty Dollar

- 287 1974 Phillips-Wheeler YAA. *aU/UNC*  
\$400-450

#### One Hundred Dollar

- 288 1984 Johnston-Stone ZAA. Consecutive pair. *UNC*  
\$850-900

### Last Prefix Australian Banknotes

#### One Pound

- 289 1961 Coombs-Wilson HK/65. Light centre fold. *aUNC*  
\$1300-1400

## Sets/Albums

- 290 NPA Cased sets 25th Anniversary & Triple Anniversary. Matched serial number pairs. 1st prefix \$1, \$2, \$5, \$10, \$20, \$50 & \$100. Serials 000 796. Last prefix 10 Shillings, 1 Pound, 5 Pound & Ten Pound. \$8000-8500

## Misprinted Australian Banknotes

### Five Dollar



- 291 1983. Missing all intaglio (black) print on Reverse. Scarce. *aEF* \$1300-1400



- 292 1992. Missing all but a hint of black print on both sides. With orange checkers mark and white checkers sticker 849011 - 00023. Scarce. *UNC* \$1500-1600



- 293 1993. Missing all simultan (colour) print on both sides. A striking error, and the first such example I have seen. Possibly unique?? *UNC* \$3500-4000

### Ten Dollar



- 294 1991. Large corner fold on right hand corner, with part intaglio print missing, and partial wet ink transfer. Most interesting. *EF* \$750-800

### Twenty Dollar



- 295 1976. Vertical paper crease along side thread 2mm, missing all print both sides. Scarce. *EF* \$400-450

- 296 1979. Ink fade of intaglio print along bottom 25% on back. *EF* \$200-220



- 297 1991. Massive corner flap on left hand side, 8.4cm x 7.5cm, with part plate number on back. Slight paper tone and a few minor marks. Rare. *aEF* \$1100-1200

## Fifty Dollar

298 1985. Partial wet ink transfer along bottom  
20% on front. *aEF*  
\$180-200

299 1990. Missing L/H prefixes on front. First  
prefix letter W on fold on back. *gVF*  
\$200-220



300 1991. Printed with both serial numbers  
upside down and at top of note. Scarce.  
*EF*

\$700-750

## Australian And Related Coin Rarities



301 Dump 15 Pence 1813 NSW. Type A/1. A superb type coin, with a clear crown and traces of original design on the Obverse, and strong lettering on the Reverse. An ideal type coin without spending in the \$80,000+ range. *aVF*

\$30000-32000



302 Holey Dollar 5 Shillings 1813 NSW. Struck on a Bolivia 8 Reales 1808PJ Charles III, Potosi mint. (Mira 1808/15). Counter-marked T. Knight (possibly an ex jeweller from Balmain NSW). One of the best such counter marked issues known, and the only one on the scarce Potosi mint issues. Clear details all round, and still a nice coin for one that has seen considerable wear. Ex M.R. Roberts sale February 1986 and private treaty to Mr K. Lee. Rare. *VG/aFINE*

\$55000-60000



303 Taylor Pattern Shilling struck in silver circa 1855. Milled edge type. A superb example, with green and red tone on the Obverse. The milled edge type is far rarer than the (later struck) plain edge types, and is under rated thus in both rarity and price, with only a few examples known. A coin with the highest provenance, being Ex A.H.F Baldwin, Spink Noble Sale 1, and the Strathburn Collection. Extremely rare. *FDC*

\$60000-65000



304 Half Sovereign 1856 Sydney Mint Type I Obverse, Type 2 Reverse. Ex the Quartermaster Collection lot 230. Originally believed to be an unrecorded pattern, this coin is the finest of only 5 known examples. The other known examples are all in low grade, the last one publicly sold in gFine for over \$27,000! This coin has nice eye appeal, with mint lustre, and minimal wear with only minor surface marks. A very rare coin of extreme importance. *gEF*

\$65000-70000



305 Proof Halfpenny 1926. A lovely even chocolate brown colour, with underlying green and blue lustre. Purchased from M.R. Roberts in the 1980's for \$1500. Very rare. *aFDC/FDC*

\$19000-20000



306 Proof Halfpenny 1951PL. A small staple scratch on Obverse and some light fingermarks else a superb example for a George VI Proof coin. Nearly full red fields. Would easily be a \$50,000 plus coin if it was unmarked. Rare. *aFDC/FDC*

\$9000-10000



307 Proof Florin 1927 Canberra. Full attractive bright mint bloom with mirror fields. An ex Baldwin coin, and a lovely example. Rare. *FDC*

\$38000-40000



308 Proof Florin 1934. A superior example, described by several highly knowledgeable people as one of the finest George V Proof Coins known. Soft gunmetal toning with unmarked flawless surfaces, attractive traces of die polishing, and great eye appeal. A gem of a proof, and a strong candidate for an argument about superior grade proofs being worth far more than “regular” examples, as a recent sale of a premium 1934 set of 6 Proof coins showed when it made over \$300,000 at auction. *FDC*

\$39000-40000



309 Proof 1937 Pattern Florin uniface Type 7. The Obverse was officially tooled off at the Royal Mint, London. Estimated mintage is believed to be only 15, with only a few of those actually in private hands. Deep, dark steel grey tone, with underlying bright red and green toning. Struck to superb specimen quality, this coin remains in its original perfect state. A superior example to the last one publicly sold (in IAG's Sale 63 in 2006), which had slight contact on the feathers, and realised in that sale the hen record price of \$120,750. An exceptional and important rarity. *FDC*

\$125000-135000



310 Proof 1937 Crown. A superior example, with lovely blemish free surfaces, and traces of die polishing marks. Attractive soft and very light purple and red toning with mint bloom. Great eye appeal, and one of the nicest proof example of this date I have seen in many years. Rare. *FDC*

\$40000-42000

## Australian Pre Decimal Coins II

### Halfpenny



311 1911. Full mint red. *UNC*

\$375-400



312 1914H. Trace of mint red and green lustre. *UNC*

\$400-500



313 1915H. Key date. Brown. Possibly lightly polished. *gEF/aUNC* \$550-600



320 1923. Key date. 6 pearls and full centre diamond, hint of 7/8th pearls. Small Reverse flan flaw. *gVF* \$3200-3400

314 1916. Some mint red. *UNC* \$200-220



315 1918I. Nearly full mint red. A few minor Obverse contact marks, and a die crack through "T" in Australia on Reverse. Very rare in this grade, especially with this much mint red colour. One of the finest known. *UNC/Ch.UNC* \$6000-6500



321 1924. Brown and red. Struck from deteriorated dies, with some die cracking and obvious die wear on the Obverse. Scarce date. *UNC* \$900-1000



316 1919. Nearly full mint red. *Ch.UNC* \$450-500



322 1927. Brown and red lustre. *Ch.UNC* \$400-450

317 1920. Nearly full mint red. A little softly struck. *UNC* \$300-350



318 1922. Brown, with hints of red. *UNC* \$200-220

323 1929. Red and brown. *Ch.UNC* \$600-650



319 1923. Key date. 6 pearls and part centre diamond. *aVF* \$2200-2400



324 1931. Nearly full mint red. Very rare in this grade, especially with this much colour. One of the finest known. *Ch.UNC/GEM* \$3800-4000



325 1939 Roo. Nearly full mint red. A superior example. *Ch.UNC*  
\$2200-2400



330 1916. Red and brown, usual good strike for this date. *Ch.UNC*  
\$550-600

## Penny



326 1911. Nearly full mint red. *Ch.UNC*  
\$800-900



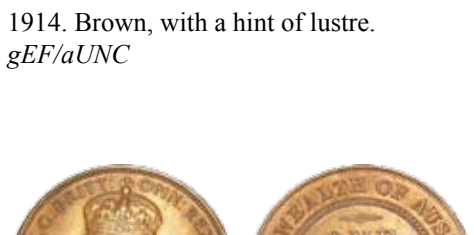
331 1918. Scarce date. Brown lustre. *aUNC*  
\$600-650



327 1913. Nearly full mint red, small carbonation mark on reverse. Scarce this grade. *UNC*  
\$700-800



332 1919 Plain. Mostly red. *Ch.UNC*  
\$700-800



328 1914. Brown, with a hint of lustre. *gEF/aUNC*  
\$240-260



333 1920 Plain. Rare date. A better than usual example with a nearly full band, and good scrolls. Appears to have been lightly cleaned, and possibly even lacquered at some stage. Rare. *gEF/aUNC*  
\$1200-1400



329 1915H. Nearly full mint red, and exceptionally well struck for this date. Rare in this grade. *Ch.UNC*  
\$2800-3000



334 1920. Double dot variety. Indian die. Dark chocolate colour with some original trace of mint red and lustre in the lettering. Typical weaker strike due to the deteriorated dies. Rarely seen in high grade, this example is probably the third finest known. Extremely rare. *UNC*  
\$10000-12000



335 1922. Mostly patchy/dusty mint red.  
*UNC*

\$600-700



337 1924. Burgundy and brown lustre.  
*UNC*

\$350-400



336 1923. Nearly full mint red. Well struck.  
*Ch.UNC*

\$1200-1400

**Postal Bidders:**  
Please submit all postal bids  
by Friday 12th March 2010



338 1925 Key date. Attractive chocolate brown finish. A well struck example that apart from missing some mint red/lustre, would otherwise be right up there with many of the top coins sold recently. Rare.  
*UNC*

\$14000-15000

339 1927. Brown and red. *UNC*

\$220-240



340 1929. Brown, with hints of red. Scarce this grade. *UNC*

\$750-800



341 1931. Mostly brown, with hints of red. Scarce this grade. *UNC*

\$900-1000



342 1932. Nearly full blazing mint orange red. One of the best of this date I have seen. *Ch.UNC*  
\$800-1000



347 1946. Key date. Mostly red and burgundy. Rare this grade. *UNC/Ch.UNC*  
\$2800-3000



343 1933. Mostly red. Well struck. *UNC*  
\$280-300

348 1947. Brown with some hints of red lustre. *UNC*  
\$200-250

### Threepence



344 1933/2 Overdate. Brown with some underlying appearance of red. Scarce. *aUNC*  
\$550-600

349 1910. Deep old patina. Originally part of a specimen like 4 coin set which has been split here into individual coins. *Ch.UNC/GEM*  
\$140-150

350 1911. Slightly touched off on the 7/8th Pearls. *aUNC*  
\$180-200

351 1912. Toned, with some mint lustre. Scarce. *UNC*  
\$1200-1400



345 1935. Nearly full mint red. *Ch.UNC*  
\$350-400



352 1915. Key date. Nice peripheral toning with some bloom. Rare. *UNC*  
\$2500-2600



346 1941 K.G. Some mint red lustre. *UNC*  
\$350-380



353 1918. Old deep green tone. *UNC*  
\$300-350



354 1919. Brilliant mint bloom and fully struck. Attributed as "Ex F. Gates Collection, possibly the finest known". A choice example. *GEM UNC*

\$900-1000



361 1928. Some mint bloom. *UNC/Ch.UNC*

\$350-400



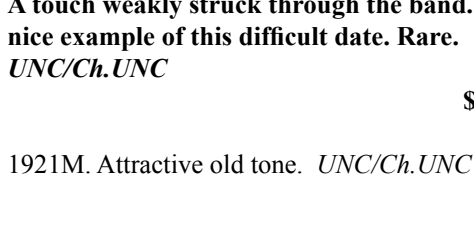
355 1921 Plain. Some mint bloom and old toning. A touch weakly struck through the band. A nice example of this difficult date. Rare. *UNC/Ch.UNC*

\$1500-1600



362 1934/3 Overdate. Well struck, particularly on the Obverse. Attributed as "Class example, one of the finest". Rare. *UNC/Ch.UNC*

\$2000-2200



356 1921M. Attractive old tone. *UNC/Ch.UNC*

\$200-220



363 1942M. Key date. Well struck, with a superb Reverse. A few minor contact marks on the Obverse keep it from being right up with the best examples. *UNC/Ch.UNC*

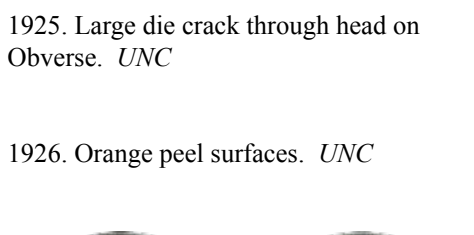
\$3800-4000



357 1924. Some tone with mint lustre. Attractive, and rare this grade. *Ch.UNC*

\$1700-1800

## Sixpence



358 1925. Large die crack through head on Obverse. *UNC*

\$220-240



359 1926. Orange peel surfaces. *UNC*

\$220-240

364 1910. Deep old gunmetal and red patina. *Ch.UNC*

\$350-400



360 1927. Mint bloom. *Ch.UNC*

\$350-400



365 1910. Toned, particularly on the Obverse, with golden red tone. *Ch.UNC/GEM*

\$550-600



366 1911. Lovely old gunmetal tone. Sharply struck. Scarce. *Ch.UNC*  
\$2600-2800



371 1919. Superb red tone with a touch of blue, and with full mint bloom. Fully and sharply struck right up, with amazing definition on the Crown. One of the finest known. *GEM UNC*  
\$4800-5000



367 1912. Slightly flat feathers and some surface marks. *aUNC*  
\$700-800



372 1920. Attractive well struck example with some mint bloom. Scarce. *Ch.UNC*  
\$2200-2400



368 1914. Slight rounding on high points of feathers and some lustre in devices. *UNC*  
\$1100-1200



373 1921. A little weakly struck in some places, especially around the top of the Obverse rim and through the lettering in "Sixpence". No real other signs of wear on the coin. *UNC*  
\$750-800



369 1916. Sharply and fully struck up, with specimen like polishing marks in the fields visible. Trace of light tone. *Ch.UNC/GEM*  
\$2800-3000



374 1923. Attractive fully struck specimen like example, which is often the case with this date. Some red and green toning and mint bloom. Scarce. *GEM UNC*  
\$3000-3200



370 1917. Toned with some lustre on the Obverse. *UNC*  
\$1100-1200

375 1925. Slight rounding on feathers. *UNC*  
\$400-450

## Shilling



- 376 1910. Deep old gunmetal patina with a touch of red and blue. *Ch.UNC*  
\$450-500



- 377 1912. Scarce date. Old dark tone and a little soft in the strike. *EF*  
\$500-550



- 378 1914. Some slight surface marks and small Obverse edge scrape. *aUNC*  
\$325-350



- 379 1920. A few minor marks and slight wear to feathers. Scarce. *UNC*  
\$1400-1500



- 380 1921 Star. Key date. Slightly flat strike and a tiny Reverse planchet flaw, but with a strong clear band. Rare. *aU/UNC*  
\$3250-3500



- 381 1922. Frosty bloom with some surface scratches, and weak strike. *aU/UNC*  
\$700-800



- 382 1922. Attractive old red and blue/green tone. Well struck Obverse. Scarce. *Ch.UNC*  
\$2400-2500



- 383 1924. Scarce date. Traces of lustre. *UNC*  
\$1700-1800



- 384 1925/3 Overdate. A few surface marks. *UNC*  
\$500-550



- 385 1927. ACGS graded MS 64. Old dusty tone and mint lustre. Obverse scratch in field. *UNC/Ch.UNC*  
\$380-400



386 1928. Scarce date. A little flatly struck.  
*aUNC* \$700-800



391 1911. Scarce date. Some slight wear to feathers and surface marks, but with a well struck band. A pleasing example of this very tough date. *aUUNC* \$3000-3500



387 1933. Key date. Nearly full band.  
*gVF/aEF* \$550-600



392 1913. Scarce date. Well struck with some light tone and a few light contact marks on the cheek. Seldom offered in this grade. Attributed as "Ex the Richard Williams Specimen". Very rare. *UNC/Ch.UNC* \$7000-7500



388 1935. Well struck. Couple of minor Obverse marks. *UNC/Ch.UNC* \$400-450



393 1914. Small edge knock. *aUNC* \$750-850

389 1936. Well struck. *Ch.UNC* \$400-450

## Florin



390 1910. Superb old gunmetal, green and red patina. A specimen like coin, and one of the finest known. The final coin from the split type set. Very rare this grade. *Ch.UNC/GEM* \$6000-6500

### Vendors:

Accepting consignments now for our next auction Sale 72 to be held September 2010.

Closing date mid July or until full.

For more information visit our website at:

[www.iaguactions.com](http://www.iaguactions.com)



394 1914H. Key date. Attractive old gunmetal and some peripheral red/green tone. Well struck, with sharp feathers and a lovely strong crown. Hard to find a better example of this key date. Very rare this grade. *Ch.UNC/GEM*

\$18000-20000



395 1915H. Some surface marking. *EF*

\$500-550



398 1921. Sharply struck, with mint bloom. A scarce date and seldom seen in this grade. Very rare. *Ch.UNC*

\$6500-7000



396 1917. A few surface marks. *aU/UNC*

\$700-800



399 1923. Well struck, and a clean bright coin, probably once lightly dipped. Small edge knocks along top. Scarce. *UNC*

\$1800-2000



397 1919. Well struck, with some attractive mint bloom. A few small surface marks. Rare this grade and amongst the finest. *Ch.UNC*

\$6000-7000



400 1924. A little weakly struck on the 7/8th Pearls. *gEF/aUNC*

\$500-550



401 1925. A few minor surface marks. *UNC*  
\$1100-1200



407 1934/5 Melbourne Centenary. Mint bloom.  
*UNC*  
\$500-550



402 1927. Peripheral die cracks. *UNC*  
\$550-600



408 1935. Nice example. *UNC/Ch.UNC*  
\$800-850

403 1931. A nice type example. *Ch.UNC*  
\$425-450

409 1936. Well struck, with some mint lustre.  
*Ch.UNC*  
\$400-450



404 1932 Key date. A superb Reverse with very little wear. Some slight wear on the 7/8th pearls on the Obverse the only real thing keeping it from top tier status. A great type coin at the price. *aU/UNC*  
\$9500-10000

### Crown



410 1938. Well struck, with a few Obverse contact marks as usual. *aUNC*  
\$400-450



405 1934. Well struck, with some mint lustre.  
*Ch.UNC*  
\$800-850

### Australian Pre Decimal Proof Coins



411 Proof Halfpenny 1955 Perth. A nice even example with full red colour. Scarce.  
*FDC*  
\$5000-5500



406 1934/5 Melbourne Centenary. Prooflike fields, Obverse scratch on head. *aU/UNC*  
\$325-350



412 **Proof Penny 1955Y Perth. A nice even example with full red colour, and a good match for the Halfpenny (offered above). Scarce. FDC**  
\$5750-6000



413 **Proof Penny 1957Y. Brilliant finish type. FDC**  
\$800-850

414 **Proof Penny 1957Y. Matte frosted finish type. FDC**  
\$1000-1100



415 **Proof Penny 1957Y. Matte frosted finish type. FDC**  
\$1000-1100

416 **Proof Penny 1958Y. FDC**  
\$700-750

417 **Proof Penny 1959Y. FDC**  
\$800-850

418 **Proof Penny 1961Y. Darkly toned. aFDC**  
\$70-80

419 **Proof Penny 1963Y. One minute spot. FDC**  
\$700-750

420 **Proof Penny and Halfpenny Pair 1963Y. Superior grade pair, with lovely original surfaces. Rare as such. FDC**  
\$1100-1200

421 **Proof Threepences 1957, 1963. (2 coins). FDC**  
\$140-150

422 **Proof Silver set of 4 1957. Threepence to Florin. (4 coins). FDC**  
\$650-700

423 **Proof set of 5 1958. Penny to Florin. The Penny partly toned. (5 coins). aFDC/FDC**  
\$1200-1300

424 **Proof Silver set of 4 1962. Threepence to Florin. (4 coins). FDC**  
\$300-325

**Australian Tokens & Internment Camps**



425 **Hogarth, Erichson and Co. 1860 Silver Threepence Token. (A 691/R 7). Scarce. VF**  
\$380-400



426 **Internment Camps WW II Penny. A bright, fresh example. UNC/Ch.UNC**  
\$240-260



427 **Internment Camps WW II Threepence. Mint red and brown. UNC/Ch.UNC**  
\$200-220



428 Internment Camps WW II Shilling. Mint red and brown. Scarce. *UNC*

\$700-800



429 Internment Camps WW II 2 Shilling. Full brilliant mint red with a small spot on the Reverse. Not far off the superb example we sold last sale, which realised over \$5,000. Rare this nice. *Ch.UNC/GEM*

\$2000-2200



430 Internment Camps WW II 5 Shilling. Mint red and brown. An attractive example. Scarce. *UNC/Ch.UNC*

\$6500-7000

### Australian Interesting Serial Numbered Banknotes

### Ten Shillings



431 1954. Number 1 note. Serials AE/30 000 001. Small edge tears at top. Scarce in pre decimal. *aFINE*

\$700-750

### One Dollar

432 1982. Consecutive prefixes, same serial numbers. 21 consecutive prefix notes, serials DHA-Y 020004. Scarce in a large run like this. *UNC*

\$220-240

### Two Dollar

433 1985. Consecutive prefixes, same serial numbers. 21 consecutive prefix notes, serials LJA-Y 393049. Scarce in a large run like this. *UNC*

\$280-300

### Ten Dollar

434 1967. Coombs-Randall issue, SEX prefix. *FINE*

\$50-60

### Australian Solid Serial Numbered Banknotes

### One Dollar

435 1972. Solid serials BDT 333 333. Scarce early issue. *UNC*

\$400-450

### Five Dollar



436 1967. Solid serials NCG 999 999. *aFINE*

\$200-220



- 437 1995 Polymer. Solid serials BJ-CM 95 111 111. Consecutive prefix run of 15 notes. An amazing consecutive run, surely unique. *UNC* \$5000-5500

### Twenty Dollar

- 438 2005 Polymer. Solid serials CB 05 222 222. *UNC* \$280-300

### Fifty Dollar

- 439 1993. Solid serials WUZ 222 222. *UNC* \$280-300
- 440 1993. Solid serials WQL 333 333. *VF* \$160-180



### Two Dollar

- 441 1966 Coombs-Wilson (R 81). Consecutive pair. *UNC* \$100-110

### Ten Dollar

- 442 1972 Phillips-Wheeler (R 304). Consecutive pair. *UNC* \$110-120

- 443 1976 Knight-Wheeler centre thread (R 306a). Consecutive pair. Catalogues at \$560. *UNC* \$220-240

### Twenty Dollar

- 444 1967 Coombs-Randall (R 402). Fold. Scarce. *aEF* \$1000-1100
- 445 1967 Coombs-Randall (R 402). Scarce. Catalogues at \$5,000. *aUNC* \$2800-3000



- 446 1967 Coombs-Randall (R 402). Consecutive pair. Traces of usual light handling. *UNC* \$9500-10000

- 447 1976 Knight-Wheeler centre thread (R 406a). Consecutive pair. Catalogues at \$850. *UNC* \$325-350

- 448 1976 Knight-Wheeler side thread (R 406b). (2 notes). Slight handling. *aUNC* \$80-100

- 449 1979 Knight-Stone OCR-B (R 407b). Consecutive pair. Catalogues at \$750. *UNC* \$280-300

- 450 1985 Johnston-Fraser Gothic (R 409b). Catalogues at \$820. *UNC* \$380-400

### Fifty Dollar

- 451 1973 Phillips-Wheeler (R 505). Catalogues at \$475. *UNC* \$200-225

- 452 1993 Fraser-Evans (R 515). Consecutive run of 20. Some slight soiling. Catalogues at \$135 each note. *aUNC* \$1100-1200

- 453 1993 Fraser-Evans (R 515). Consecutive run of 75. Some slight soiling. Catalogues at \$135 each note. *aUNC* \$4200-4400

## One Hundred Dollar

- 454 1990 Fraser-Evans (R 612). Consecutive run of 35. Some slight soiling. Catalogues at \$260 each note. *aUNC*  
\$3800-4000
- 455 1990 Fraser-Evans (R 612). Consecutive run of 35. Some slight soiling. Catalogues at \$260 each note. *aUNC*  
\$3800-4000

## Mistruck Error Coins

## Halfpenny



- 456 1948. Off centre rim lip 3mm. *gFINE*  
\$40-50

## Penny



- 457 1944Y. Off centre rim lip 4mm. *gVF*  
\$100-120

## Threepence



- 458 1964. Obverse brockage, struck against another struck blank. *aUNC*  
\$280-300

## Sixpence



- 459 1962. Part Reverse brockage, 50% struck against another struck blank. *aEF*  
\$350-380

## Shilling



- 460 1943S. Struck on a USA 5 Cent of the period, in copper, silver manganese alloy used in 1942-1945. Weakly struck on a thinner planchet as the Shilling is larger than the 5 Cent, and without any real edge milling. Comes with the 2 correct coins for comparrison. Very rare. *aVF*  
\$1700-1800



- 461 1955. Off centre raised rim lip 2mm. *EF*  
\$80-100

## Crown



- 462 N/D. Blank except for a few rim letters. Unusual and scarce. *aUNC*  
\$150-180

## Two Cent



- 463 N/D. Obverse brockage, with a nearly full, clear strike. Very scarce in Decimal issues. *gVF*

\$800-850

## Five Cent



- 464 2007. Double Heads, struck upset 180 degrees. Found in circulation, this is highly unusual, as no such deliberate “mint sport” double headed issues have been sighted in recent years, with most being from the late 1960’s to 1980’s period. Possibly unique. *aUNC*

\$2200-2400

## Fifty Cent



- 465 N/D. Double Tails. Rare. *UNC*

\$1800-2000

## World Banknotes



- 466 Fiji US\$10 Fijian Government Debenture. Levuka, 1 Jan 1872. Value hand written then over-stamped “ten dollars”. Fully signed & issued. Very rare. *gVF*

\$750-800



- 467 New Zealand Specimen Ten Shillings Fleming 1956-67. Specimen number 6, ex VIP presentation book. Trace of edge book mounting. Rare. *aU/UNC*

\$2400-2500



- 468 New Zealand One Pound Bank of NSW. Wellington, 1-8-1914. Fully signed and issued. Rare, especially in this grade. *VF*

\$4800-5000

Download Prices Realised from our website:

[www.iagauctions.com](http://www.iagauctions.com)

From Tuesday afternoon 16th March 2010,  
after all postal bids are finalised.

For more details, contact us at:

[iagauctions@optusnet.com.au](mailto:iagauctions@optusnet.com.au)



- 469 New Zealand One Pound Bank of New Zealand 1-6-1917. Fully signed and issued, a very attractive note. Rare. *aVF* \$1700-1800



- 470 New Zealand One Pound Lefeaux 1934. Two pay packet folds. Rare this grade. *gEF* \$2000-2200



- 471 New Zealand Specimen One Pound Fleming 1956-67. Specimen number 18, removed from a VIP presentation book. Trace of glue and paper from book. Rare. *aUNC* \$2400-2500



- 472 New Zealand 50 Pound Hanna 1940-55. Rare this grade. *gEF* \$3600-3800

## Ancient Coins



- 473 Ancient Greece. Pisidia, Selge 330-190 BC AR Stater. Two wrestlers grappling and slinger standing. "Olympic Games" tribute coin. Trace of lustre, and in better condition than usually found. *aEF* \$600-650



- 474 Ancient Greece. Thrace, Lysimachus 323-281 BC AR Tetradrachm. Diademed head of Alexandria, Athena seated left. *gVF* \$1100-1200



- 475 Ancient Greece. Phoenicia, Arados 2nd Century BC AR Tetradrachm (S. 5592). Turreted bust of Tyche right, Nike standing left. *gVF/aEF* \$500-550



- 476 Roman Republic AR Denarius Q. S. C. Brutus 54 BC (S. 397). L. Junius Brutus between 2 lictors and an accensus. Scarce. *aEF* \$800-850



477 Roman Republic AR Denarius Mark Antony 38 BC (RSC. 13). Athens mint. Radiate head of Sol, Antony standing right wearing toga and veil with lituus. Rare. *gVF*

\$1400-1500



478 Roman Empire Nerva AE As 96-98 AD. Reverse clasped hands. *gVF*

\$400-450



479 Roman Empire Trajan AE As 98-117 AD. Reverse Victory with wings spread. Fabulous strike and portrait. Scarce this nice. *EF*

\$1000-1100



480 Roman Empire gold Aureus Hadrian AD 117-138. (S. 3388). Nice portrait of Hadrian, with a famous reverse of Romulus and Remus suckling on a she-wolf. *VF*

\$5800-6000

## Miscellaneous Australian Banknotes

### Ten Shillings

481 1939 Sheehan-McFarlane (R 12). *gF/aVF*

\$100-120

482 1942 Armitage-McFarlane (R 13), 1949 Coombs-Watt (R 14), 1952 Coombs-Wilson (R 17). (3 notes). *aVF*

\$200-220

483 1949 Coombs-Watt (R 14). Some surface adhesion/marks. Fresh. *gEF*

\$120-140

484 1954 Coombs-Wilson (R 16). Consecutive trio. Light bend and some slight toning. *aUNC*

\$350-400

485 1961 Coombs-Wilson (R 17), One Pound 1953 Coombs-Wilson (R 33). (2 notes) *aEF/aUNC*

\$100-110

### One Pound

486 1927 Riddle-Heathershaw (R 26). Cleaned of toning. *gFINE*

\$110-120

487 1927 Riddle-Heathershaw (R 26). Two tears. *gVF/aEF*

\$110-120

488 1933 Riddle-Sheehan (R 28). *gFINE/aVF*

\$160-180

489 1942 Armitage-McFarlane (R 30b). *gVF*

\$110-120

490 1942 Armitage-McFarlane (R 30a). Hint of bend. *aU/UNC*

\$300-350

491 1949 Coombs-Watt (R 31). *EF*

\$150-160

492 1953 Coombs-Wilson (R 33). Consecutive trio. Light bend. *aUNC*

\$240-260

493 1961 Coombs-Wilson (R 34b). (2 notes). *aUNC*

\$180-200

### Five Pound

494 1954 Coombs-Wilson (R 63) and 1960 (R 50). (2 notes). *gVF*

\$180-200

495 1954 Coombs-Wilson (R 63). (2 notes). *gVF*

\$180-200

496 1960 Coombs-Wilson (R 50). Consecutive pair. *gEF/aUNC*

\$240-260

## Ten Pound

497 1954 Coombs-Wilson (R 62). *aEF*  
\$325-350

## Assorted

498 10 Shillings 1949, 1 Pound 1942, 5 Pound  
1949. In Downies "Collector" folders.  
(3 items). *VF-EF*  
\$400-450

499 \$1 1982 Johnston-Stone bundle of 100. Sealed  
with red band, non consecutive (split) bundle.  
*UNC*  
\$160-180

500 \$1 1982 partial bundle (35), \$2 1985  
partial bundle (24), also \$50 in face extra.  
Total face \$133. *F-UNC*  
\$140-150

## Miscellaneous Australian Coins

## Halfpenny

501 1938 (2), 1939 (1st reverse). (3 coins).  
*gEF-UNC*  
\$60-80

502 1945, 1946, 1947Y, 1948, 1948Y, 1949,  
1950, 1951Y, 1951Pl, 1952. (10 coins).  
*aEF-UNC*  
\$80-90

503 Assorted Halfpennies, includes 63 George V,  
the balance mostly 1940's and 1950's. Some  
cleaned. (240 coins). *Good-UNC*  
\$50-60

504 QE II Set 1953 - 1964Y. Some red. (9 coins).  
*gEF-UNC*  
\$30-40

505 Complete set in Dansco album, minus 1923.  
*Good-UNC*  
\$60-70

## Penny

506 1913, 1934 (artificially scalloped edge), 1935,  
1936. (4 coins). *VF-EF*  
\$40-50

507 1934 & 1959. Some red. (2 coins). *UNC*  
\$200-220

508 1938, 1939. Some red. (2 coins). *aU/UNC*  
\$50-60

509 1942I, 1943, 1943Y, 1944Y, 1945Y, 1947,  
1948, 1949. Some red. (8 coins). *EF-UNC*  
\$80-100

510 1948, 1950, 1951 (2), 1951Y, 1951Pl (2), 1952,  
1952A, 1959, 1964 (3). Some red. Also 1950 and  
1963 gold plated. (15 coins). *EF-UNC*  
\$80-100

511 Assorted George V Pennies, some cleaned.  
(44 coins). *VG-VF*  
\$25-30

512 Assorted sheets of Pennies 1950's -1960's.  
Some later dates in nice grade. (approx-  
imately 200 coins). *VG-UNC*  
\$30-40

513 Complete set in Dansco album, minus 1930.  
*Good-UNC*  
\$150-160

514 QE II Set 1953-1964Y. Some red, full red.  
(20 coins). *gEF-UNC*  
\$120-140

## Threepence

515 George VI Set 1938-1952. No 1942M.  
(17 coins). *gEF-UNC*  
\$80-100

516 QE II Set 1953-1964. (12 coins). *aU-UNC*  
\$60-80

517 Set 1910 -1936 (no 1927). A few in better  
grade. Includes an aFine overdate 1934/3  
(21 coins). *Good-VF*  
\$110-120

## Sixpence

518 1921, 1926 (polished, slight damage),  
1927. (3 coins). *VF-EF*  
\$40-50

519 George VI Set 1938-1951. No 1952.  
(18 coins). *aEF-UNC*  
\$80-100

520 QE II Set 1953-1963. (12 coins). *EF-UNC*  
\$110-120

521 A large red album of 460 Sixpences 1910-  
1963. Includes 259 pre and 79 post (338  
coins total). *Poor-EF*  
\$260-280

## Shilling

522 1938, 1939, 1943, 1944. (4 coins).  
*aEF-aUNC*  
\$125-150

|     |  |           |
|-----|--|-----------|
| 523 | George VI partial Set 1941-1952. (10 coins).<br><i>EF-UNC</i>                | \$90-100  |
| 524 | QEII Set 1953-1963. (12 coins). <i>EF-UNC</i>                                | \$40-50   |
| 525 | Complete set in Dansco album. <i>Good-EF</i>                                 | \$140-150 |
| 526 | A large green album of 102 Shillings<br>1953-1957. (103 coins). <i>F-UNC</i> | \$90-100  |
| 527 | A large green album of 265 Shillings<br>1953-1957. (265 coins). <i>F-UNC</i> | \$220-240 |
| 528 | A large green album of 460 Shillings<br>1954-1963. (460 coins). <i>F-UNC</i> | \$400-450 |

## Florin

|     |  |           |
|-----|--|-----------|
| 529 | 1914, 1928. (2 coins). <i>gFINE/aVF</i>  | \$40-50   |
| 530 | 1916 Mint lustre, 1917. (2 Coins). <i>gVF</i>  | \$70-80   |
| 531 | 1925, 1926. (2 Coins). <i>aEF/VF</i>   | \$60-80   |
| 532 | 1927 Canberra. (5 coins). <i>aUNC-UNC</i>  | \$150-175 |
| 533 | 1951, 1952. (2 coins). <i>aEF-gEF</i>  | \$20-25   |
| 534 | Commemorative Set of 3 1927 Canberra,<br>1951 Federation, 1954 Royal Visit. <i>aU/UNC</i>  | \$70-80   |
| 535 | George VI partial Set 1940-1947. (12 coins).<br><i>aEF-UNC</i>   | \$50-60   |
| 536 | QE II Set 1953-1963. No 1954, instead is a<br>Royal Visit. Extra 2 1963. (12 coins).<br><i>gEF-UNC</i>   | \$80-100  |
| 537 | Complete set in Dansco album, including<br>1932 and 1934/5. <i>Good-VF</i>   | \$280-300 |
| 538 | Complete set in Dansco album, including<br>1932 and 1934/5. <i>Good-VF</i>   | \$280-300 |
| 539 | Large blue album of Commemorative Florins.<br>Includes 29 1927 Canberra, 63 1951 Federation,<br>168 Royal Visit. A few better coins. (260 coins<br>total). <i>Good-gEF</i> | \$500-550 |

## Crown

|     |  |           |
|-----|--|-----------|
| 540 | 1937 (6) and 1938 (2). (8 coins). <i>F-aEF</i> | \$250-300 |
|-----|--|-----------|

## Sets/Albums

|     |   |           |
|-----|---|-----------|
| 541 | Blue album of 20 Halfpennies and 200 Pennies,<br>1950's -1960's. (220 coins). <i>VG-UNC</i>   | \$30-40   |
| 542 | Red album of Threepences and Sixpences,<br>1940's-1960's, mostly 1960's. Includes 66<br>Sixpences and 59 Threepences, many later<br>dates in UNC. (125 coins). <i>VG-UNC</i>  | \$100-110 |
| 543 | Threepence and Sixpence set, nearly complete,<br>a few coins in better grade. <i>VG-UNC</i>   | \$70-80   |
| 544 | Massive black album filled with assorted pre<br>and post silver issues. Includes 278 Threepences,<br>385 Sixpences, 181 Shillings, 280 Florins,<br>including many semi key dates such as 1923<br>Threepences, 1915 Florins etc. A must view.<br>(1,124 coins total). <i>Poor-EF</i> | \$800-900 |

## Assorted

|     |   |            |
|-----|---|------------|
| 545 | Box of assorted silver issues of various dates<br>pre and post. Includes 100 pre Threepences,<br>33 pre Shillings, 52 post Shillings, 32 pre<br>Florins, 200 post florins. (Total 427 coins).<br>Approximate weight 3 kilos.  | \$550-600  |
| 546 | Sheet of 20 1962 Sixpences, plus sheet of 20<br>each 1963 and 1964 Threepences. (60 coins).<br><i>UNC</i>   | \$110-120  |
| 547 | 1938 Silver Set, Threepence to Florin. Toned,<br>except the Sixpence. <i>EF-UNC</i>   | \$50-60    |
| 548 | Sheet of 15 Mis Struck coins, includes some off<br>centre and raised rim strikes, edge bites and split<br>planchets. (15 coins). <i>VG-EF</i>   | \$80-90    |
| 549 | Sherwood Pre Decimal coin year sets 1910-<br>1964. Includes all issued years except 1930<br>and 1937, but does include 1923 (the half-<br>penny damaged VG) and other key date<br>years. Most coins average circulated. All in<br>original packs of issue as issued. (53 sets). | \$900-1000 |

## Miscellaneous & Unreserved Lots

|     |   |           |     |  |           |
|-----|---|-----------|-----|--|-----------|
| 550 | Box of assorted Australian Halfpennies and Pennies. Approximate weight 18 kilos.  | \$60-80   | 563 | Perth Mint privy mark 1992 Holey Dollar, plus 1988 (2), 1989 Holey Dollar silver issues, coins toned, some damage to boxes. (4 lots).  | \$40-50   |
| 551 | 2 sheets of 1966 Round 50 Cents. (40 coins) <i>F-EF</i>   | \$110-120 | 564 | Perth Mint 2006 Pre Decimal coins issue and Sherwood 2007 1930 Penny Cook Island coin. (2 lots).   | \$20-25   |
| 552 | 10 cent 1980 Proof & \$1 1987 Proof. (2 loose coins). <i>FDC</i>  | \$3-5     | 565 | Australia Coat of Arms die proof of engraving by Frank Manly. Circular Coat of Arms in red, and Coat of Arms in black, both on glazed paper. (2 items). Scarce.  | \$200-250 |
| 553 | 6 sheets of assorted decimal coins, 20 Cents to \$2. Includes some 50 Cents 1969 onwards. Over \$75 face. (101 coins). <i>F-EF</i>                        | \$80-90   | 566 | Motor Spirit Ration coupons. 5 gallons WA 1949 (10). <i>aUNC</i>   | \$50-60   |
| 554 | Downies & Sherwood cased large Adelaide Pound gold plated silver issue. 180 grams.  | \$70-80   | 567 | Motor Spirit Ration coupons. 10 gallons WA 1949 (10). Scarce. <i>aUNC</i>  | \$80-100  |
| 555 | RAM mint sets 1982 (3), 1984 (4) all discoloured, 5 \$1 coin set (2), 1966 1 and 2 cent card damaged, and cased 50 cent collection of 7 coins. (11 lots). | \$20-25   | 568 | Motor Spirit Ration coupons. 10 gallons Victoria series B (8). <i>aUNC</i>   | \$70-80   |
| 556 | RAM mint sets 1983, 1985 (3), 1986 (4), 1987 (3), 1988, 1991. In packs of issue and some damaged. (13 lots).  | \$80-90   | 569 | GB cased Maundy Set 1908. Old dark tone. Slight damage to original box. <i>FDC</i>   | \$100-120 |
| 557 | RAM proof set 1966. Box damaged and coins toned.  | \$60-80   | 570 | Collection of USA Half Dollars 1964. (44 coins). <i>EF-UNC</i>   | \$90-100  |
| 558 | RAM proof sets 1969 to 1987, all with foams except 3 lots, and mostly in reasonable condition. (18 lots).   | \$280-300 | 571 | 2 blue albums of World Coins, mostly minor, but includes a few silver issues such as 4 S.A. crowns , 12 PNG shillings, 3 USA half dollars. (98 coins).   | \$70-80   |
| 559 | RAM proof sets 1976, 1982, 1985, 1990, 1991, 1992, 1995. Boxes and cases all damaged. (7 lots).   | \$60-80   | 572 | Collection of assorted World minors. Includes USA, GB, Ireland (mostly 1960's), and a Roman Antonianus of Octacilia Severa. (117 coins). <i>VG-UNC</i>   | \$30-40   |
| 560 | RAM masterpieces in silver sets 1991. Both with damaged boxes. (2 lots).  | \$60-80   | 573 | Red album of assorted World coins. Nearly all silver issues, includes many crown size coins from S.A., USA, GB, France (5 Francs many from the mid 1800's), NZ and more. (100 coins). <i>Good-UNC</i>  | \$400-500 |
| 561 | RAM 1989 and 1991 silver bird proofs. Damaged boxes. (2 lots).  | \$20-25   | 574 | Small blue album containing various World Banknotes. A wide assortment of countries, some in better grade and some better issues. Includes Honk Kong, China, Canada, Greece, Spain, Germany and much more. Also includes a set of Decimal training notes. Contains over 160 notes. | \$60-80   |
| 562 | Small box of assorted Australian RAM and Perth Mint cupro nickel and silver issues, \$88 face value, many with damaged/no boxes.                          | \$90-100  |     |  |           |

|     |   |           |
|-----|---|-----------|
| 575 | Uncut sheet of 4 \$5 Fraser-Higgins 1990.<br>(4 notes). <i>UNC</i>  | \$25-30   |
| 576 | Uncut sheet of 20 \$5 Fraser-Higgins 1990.<br>(20 notes). <i>UNC</i>  | \$150-175 |
| 577 | Uncut sheet of 40 \$5 Fraser-Higgins 1990.<br>(40 notes). <i>UNC</i>  | \$300-330 |
| 578 | Uncut sheet of 24 1988 \$10 Polymer.<br>(24 notes). <i>UNC</i>  | \$500-550 |
| 579 | Uncut sheet of 40 \$10 Fraser-Cole 1994.<br>(40 notes). <i>UNC</i>  | \$600-650 |
| 580 | 2 small blue albums containing various<br>World Banknotes. A wide assortment of<br>countries, most in well circulated grade.<br>Includes many Asia Pacific and Colonial<br>issues. Well over 200 notes. | \$40-50   |
| 581 | Red stock album of assorted Australian and<br>World banknote minors. Includes a number<br>of "Political" issues. <i>Poor-EF</i>   | \$30-40   |
| 582 | USA 1983 Olympic proof sets. (2 lots).  | \$10-15   |
| 583 | 9 lots of assorted World mint cupro nickel<br>and silver issues in packs of issue.  | \$10-20   |
| 584 | Small box of approximately 30 lots of<br>assorted World mint minor issues.  | \$10-20   |
| 585 | Pair of 1910 Threepences set as cufflinks<br>in silver.   | \$15-20   |

## Thank You For Your Participation

Room bidders please wait to collect lots until after the sale has finished. We will endeavor to get you underway as quickly as possible. Postal bidders please allow us until Tuesday the 16th to sort and finalise all postal sales and publish prices realised.

Prices Realised will be posted on the website by Tuesday 16th of March, once the large number of postal bids has been fully finalised. All auction catalogue subscribers will have the prices realised posted on the 16th, and should receive them later in the week. Passed in lots will be available for sale until Friday 19th March. Any remaining unsold lots after this date will then be withdrawn from sale.

Next auction, Sale 72, will be held in September 2010. We will be accepting all consignment lots for Sale 72 up to late June, or until the sale is full. Please contact us from April on to discuss selling your collection in a confidential way with us. Remember we charge No Sellers Commissions or Fees to all vendors who consign in our auctions.

For any more information please call our office on:

**Ph: (07) 55 380 300 - or Fax: (07) 55 387 296**

Alternately you can Email us at:

**[iagmail@optusnet.com.au](mailto:iagmail@optusnet.com.au)**

Download the Prices Realised from our Website:

**[www.iagauctions.com](http://www.iagauctions.com)**

## Notes

# Terms And Conditions of Sale

*Please read the following "Terms of Sale" carefully. These terms are applicable to all floor bidders and mail bidders in this auction. Your submission of bids in this Auction constitutes your acceptance of these "Terms of Sale".*

**1.** This is a public auction sale, NOT an approval sale. At the fall of the gavel or auctioneer's call of "Sold", all sales are final. By bidding in this auction, the bidder personally guarantees all payments. The auctioneer has final discretion in all matters. In case of dispute, the lot(s) in question may be resold. Lots will be sold in their numerical sequence unless the auctioneer directs otherwise.

**2.** Payments must be made in full and lots must be removed the day of the sale or by 5p.m. the next day. Absolutely No lots will be released until payment in full has been made. Payment may be made in Cash, by Personal Cheques (with proper identification, at the discretion of International Auction Galleries), or by Bank Transfer or Major Credit Cards as stipulated. Successful postal bidders will be notified by mail via an auction receipt.

**3.** A 16.5% buyer's premium will be added to the knock down price of each lot (includes GST). **All Credit Card payments by Amex will incur a 3% surcharge.**

**4.** Unless otherwise specifically stated by the auctioneer, each new bid shall be raised above the previous bid by such amount as is determined by the auctioneer during the course of the auction, and no party shall be allowed to retract his or her bid after acknowledgment by the auctioneer.

**5.** The auctioneer reserves the right to refuse any bid and to withdraw any goods from sale at any time, or to disclose any reserves or vendor information, without having to state any reason.

**6.** At the fall of the hammer, (if required by the Auctioneer), the purchaser shall give his or her full name and address, and pay 25% of the purchase price deposit. In default, the lot(s) purchased may, at the auctioneer's discretion, immediately be reoffered and resold. All lots sold will remain the property of the owner/vendor until cleared payment is made in full. Only then will the title of ownership of the lots pass to the purchaser, irrespective of any terms or deferment of payment due.

**7.** Except as otherwise provided by state or federal law, no condition or warranty is given or implied by the auctioneer in respect of any lot offered. As all lots are given for inspection prior to the commencement of the sale, it shall be presumed that the goods have been inspected and that the purchaser accepts the goods bought with all faults, if any, as described. All lots are guaranteed genuine, except where so described; however if a lot sold is found to be a deliberate fake or forgery, the purchaser may return it, and receive upon confirmation of the same, a full refund.

**8.** The auctioneer shall not be liable for any description or mis-description given to the goods for sale. Any state-

ment as to the quantity of goods is approximate only and is as represented to the auctioneer. The auctioneer gives no warranty that the quantities as stated are correct.

**9.** If any purchaser fails to comply with any of these conditions or if any cheque given on account of the purchase price of any goods is dishonored, any monies which the purchaser has paid to the auctioneer on account of the purchase shall be forfeited absolutely to the vendor. The vendor or the auctioneer is at liberty to re-sell the lot in any manner and upon such terms and conditions as they may deem proper and to sue the purchaser for damages. All losses and expenses incurred by the vendor or the auctioneer and all damages which the vendor or the auctioneer may sustain resulting from any re-sale, shall be recovered from the purchaser as liquidated damages. Without limiting the generality of the foregoing the auctioneer in the event of such resale is entitled to:

**a)** The amount of any commission lost as a result of the purchaser not proceeding with the purchase

**b)** The cost of advertising and other general expenses in respect to any such re-sale.

**c)** Any difference in price from the initial sale to the price received in the re sale of the items(s).

**A service charge of 2% per month (Or part thereof) will be added to all overdue accounts (30 days after the date of Auction is then deemed to be in the overdue period for unpaid accounts).**

**10.** Estimates are given only as a guide, and not given as starting points for bidding: lots may sell for a price greater than or less than these estimates. Bidding will start at an increment above the lowest postal bid received, or at the Auctioneers sole discretion. All prices are in Australian Dollars.

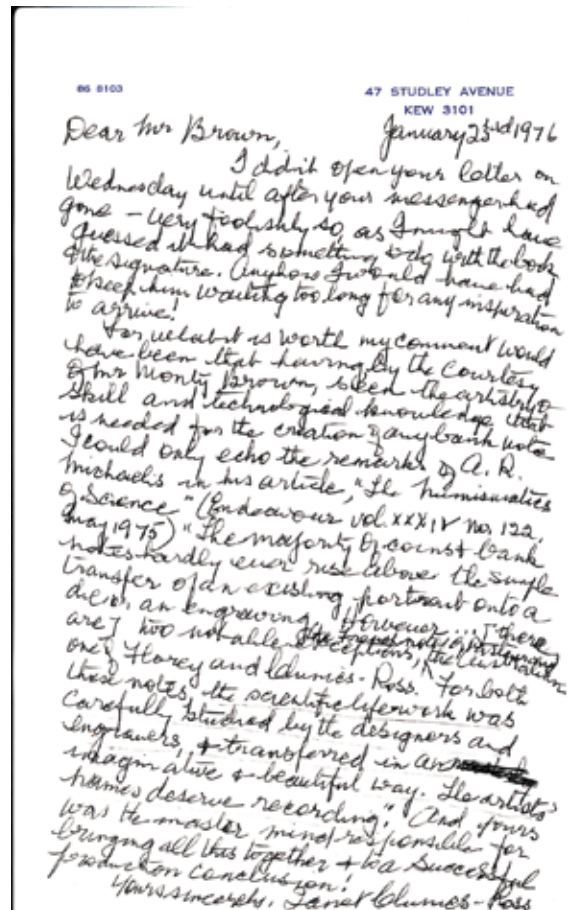
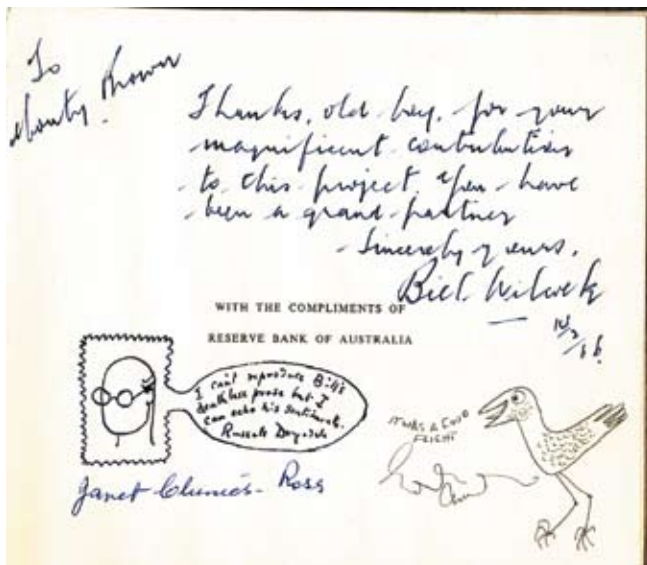
**11.** No lots purchased by a floor bidder may be returned, including those lots where the bidder is acting as agent for another, or to mail bidders who have examined the lot(s). These are no returns or refunds except for reason of lack of authenticity or genuine mistake. Late remittance constitutes just cause for revocation of all return privileges.

In the event that a bidder is acting as an agent for Another, and that agency has not been disclosed to the auctioneer in writing 24 hours before the Sale date, then the bidder is deemed by the auctioneer to be the final buyer in all respects, and is fully responsible for all payments, fees and charges.

**In no event may any lot(s) be returned after (21) days from the date of the auction. All sales are then final.**



LOT 244





LOT 115



LOT 116



LOT 123



LOT 127



LOT 138



LOT 182



LOT 185



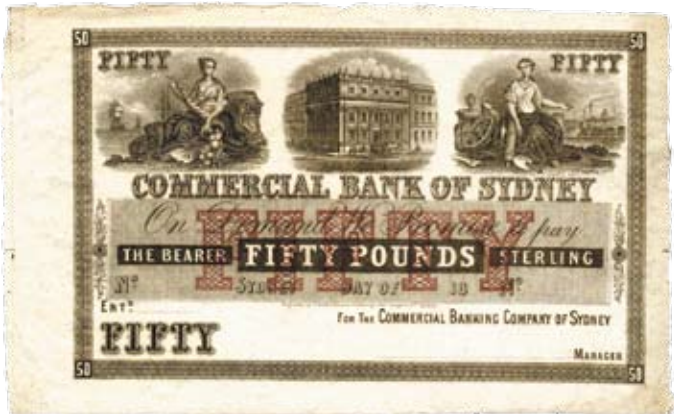
LOT 210



LOT 117



LOT 120



LOT 128



LOT 129



LOT 183



LOT 184



LOT 232



LOT 247



LOT 014



LOT 225



LOT 264



LOT 305



LOT 324



LOT 334



LOT 371



LOT 374



LOT 394



LOT 397



LOT 228



LOT 257



LOT 307



LOT 315



LOT 338



LOT 347



LOT 390



LOT 392



LOT 398



LOT 404





LOT 155



LOT 249



LOT 275



LOT 301



LOT 308



LOT 310



T. S. HARRISON, AUSTRALIAN NOTE PRINTER.



LOT 209



INTERNATIONAL  
AUCTION  
GALLERIES

Ph: 07 5538 0300  
Fax: 07 5538 7296

P.O. Box 1380  
Broadbeach Qld 4218 Australia

iagmail@optusnet.com.au  
www.iagauctions.com