



INTERNATIONAL
AUCTION
GALLERIES



Australian & World Rare Coin & Banknote

AUCTION 79

Sofitel Hotel, Gold Coast, Queensland

Sunday 13th April 2014



1852



LOT 412



LOT 413



LOT 414



LOT 421

Welcome To Sale 79

Welcome to our first Auction for 2014! What a great selection featuring some superb and classic rarities, large collections and single lots we once again present! This Sale has some fantastic bargains as a result of a number of Estates and Liquidated stock being now brought to market. I think this sale presents some of the best purchasing opportunities we have seen in a long time, so on that note, don't miss out on this opportunity, as stock at these price levels may not be seen again!

Please Note: There has been confusion as to Postal Bidding. There is two types of Postal Bids, and they are as follows:

Fax, Email or Phone Bids (email and phone bids still require a signed copy of the bid form, available on the website) or via the website direct (by Online bid form submission) or of course by filling out a Bid form enclosed in the Catalogue posted to all subscribers. All Postal bids made in this manner close off on Friday 11th April at 5pm as they need to be manually checked and entered into the system.

Bids submitted via the website direct from logging in through your own account closes 2 hours before the actual sale start at 12pm on Sunday 13th April. This method is recommended as you can view current bids, and see what lots you are winning and losing in terms of other Postal bidders prior to the start of the Live Sale. Bids on all lots can be checked prior to the sale start on the website under the "View All Lots with Bids" function in the View Sale 79 Lots section.

Some Sale 79 Auction Highlights and more...

A brief selection here of just some of the many highlights underlines the fantastic value of the lots on offer in this Auction. Market conditions have brought many liquidated estates to light, and this sale is a perfect vehicle to snap up some real bargains before market conditions change. A great example is a superb 1852 Adelaide Pound Type II, probably the finest example we have offered. This historically significant reminder of our Gold rush days is also our first gold coin struck, and is offered at around one third of it's original sale price, estimated at \$75,000.

Another key rarity on offer is a Taylor Copper Fourpence C 1860, and of superb provenance estimated at \$36,000. Two VF Dumps, a Type A/1 and D/2, a Specimen 10 Shilling Banknote 1938 estimated at \$55,000, and a 5 Pound "No Mosaic" type estimated at \$35,000. Also, a Unique consecutive pair of 10 Shilling Starnotes 1942 estimated at \$22,000 is another of the great value highlights. Other Banknotes of note include several old collections featuring original, UNC George V notes including a 10 Shillings 1932 Miller-Collins, 1926 Kell-Collins and 1928 Riddle-Heathershaw, 1 Pound 1923 Miller-Collins, 1926 Kell-Collins and Kell-Heathershaw Trio, 1927 Riddle-Heathershaw pair, and Five Pound 1927 Riddle-Heathershaw.

A great selection of Pre Decimal Proof coins has also been included, with many choice examples including a George V 1935 Halfpenny and Penny Pair FDC, a Halfpenny 1947Y, Penny 1947Y, Penny 1952A, Threepence 1951PL, and a Sixpence and Shilling

1934. A number of QE II Proofs are also on offer including a Choice 1955P Halfpenny and Penny along with a number of highly graded PCGS proof coins. A Superb Specimen Sovereign 1922S, one of only 2 examples known, rounds out this fine selection. Pre Decimal coins are represented by over 280 lots of high quality Gold, Silver and Copper issues including a number of Key dates and PCGS graded coins.

Other Coins of interest include a GB Gold 5 Guineas George II 1729, A Peru Cob "Gold Doubloon" 1705 and an Egypt Ptolemy III Euergetes Gold Octadrachm 246-222 BC. A small but interesting collection of Medals includes a Silver Products Of NSW prize medal and Captain Cook Royal Society medal. Internment Camps issues include the very rare Copper WW I Liverpool circular Token and Square Threepence both in high grade. Mistrikes and Misprints are another feature of this sale, with some major Banknote Errors catalogued, and 35 Mis-Struck coins, with some of the most significant and dramatic Errors we have seen. These include 5 Cent Obverse and Reverse Brockages as well as a Uniface issue, a Superb double struck \$2, two massively off struck 20 Cents, and a number of other scarce Pre Decimal and Decimal Error coins.

Once again this superb sale has something for every collector, and every budget!

Happy Collecting to all!

There will be limited viewing for interstate dealers in our Offices: Friday 11th & Sat 12th April By Prior Appointment Only.

Level 2 - Sonata - Cnr. Queensland Avenue & Surf Parade, Broadbeach QLD 4218.

Phone: (07) 55 380 300 or **Fax:** (07) 55 387 296
Email: mail@iagauctions.com **Website:** www.iagauctions.com

Welcome to IAG's Sale 79

Sunday 13th April 2014 at 2pm.

Sofitel Gold Coast – 81 Surf Parade Broadbeach QLD.

Important Auction Information:

Viewing & Auction: Sofitel Gold Coast - Level 3, Broadbeach Room.

Viewing and Auction Times – Viewing – Auction day Sunday 13th 11am to 2pm. The Auction will commence at 2pm with Session 1, and will take approximately 4 hours to complete the whole auction. Session 2 will start with lot 408 after a short break.

There will also be limited viewing for interstate clients only on Friday 11th and Saturday 12th April, strictly by appointment, in our offices from 9-5pm, Level 2, 20-22 Queensland Avenue, Broadbeach, Gold Coast, Queensland. Other times may be available by appointment only. Please call our office on (07) 55 380300 for any further details, or for information regarding viewing appointments, or email us at mail@iagauctions.com

Please visit the website www.iagauctions.com for further details and a map of the venue location, along with enhanced Lot by Lot item viewing, full Lot information and a watchlist and Postal Bidding features for all registered users.

Payment: All amounts are in Australian Dollars. Credit Cards (accepted with signature & full address details): MasterCard, Visa & AMEX only. A Surcharge of 3% will be applied to all AMEX card charges only.

Buyers Premium: A 19.25% total Buyers Premium will be added on to the knock-down price of all lots. Additional credit card charges will be waived with any payments made with either Visa or MasterCard.

Postal Bidders: Will be advised of successful bids, and items will be dispatched only upon receipt of payment in full. Unsuccessful postal bidders will also be notified, and will receive an auction prices realised when they are posted.

All Postal (fax/phone/post/via web submission) bidders please note: All non Online bids must be received by 5pm Friday 11th April, although earlier is advised. This includes Postal bids that are submitted directly via the website: www.iagauctions.com through the Online bidding form submission page. Please keep in mind that the earliest received bid will always get preference in the case of there being two or more identical high bids registered. All Postal Online and non Online bids are subject to the Auction Terms and Conditions, and must be accepted (non Online bids with fax and posted forms signed) before bids will be valid.

Web (Online) Postal bids: Only Online bids placed by registered members through their own personal accounts will be accepted after 5pm Friday 11th. Acceptance of Online bids will close at 12pm on Sunday 13th April (Auction Day), where all Postal bidding will be collated to be then used at the start of the Live Auction at 2pm.

Online members must build a "Watchlist". This is then used to submit bids automatically via the website direct. Bidding via the website for all registered members will show their current successful/unsuccessful bids (in relation to other postal bids) as they are received or to the lots reserves. This can also be viewed in the "Sale 79 Lots" section. Only bids that meet reserves will be shown. The "View All Lots With Bids" function will create a PDF where all current successful postal bids can be viewed prior to the start of the Live Sale.

Note: All Online bidding is still subject to change as the Online bids are then used in the "Live" portion of the sale. Is it advised as such that you ensure you bid your maximum bid, even if you are winning the item Online before the Online bids closes, as the "Live" floor bidding may also then compete with your bids. If you have any bidding questions, please contact us.

Postage and Insurance: Small items under \$200 - \$7.50 via normal mail, Small items between \$200 and \$1000 - \$12.50 via registered post, Items over \$1000 - \$17.50 via registered post person to person, Heavier items over 500 grams have an additional charge of \$2 per KG or part thereof. International post will be at cost but not insured. Bullion Gold items will not be posted, please contact us to make other arrangements. Items will not be insured at all unless it is requested. Insurance is charged at \$1 per \$100 upon request.

Credit cards: Successful buyer's lots will be processed and dispatched for existing clients upon clearance of all funds. At our discretion we reserve the right to hold new clients lots who pay by credit card for up to 60 days. All postal bid payments are to be completely finalised within 14 days of sale please. For any more information please contact us during business hours at our office on: (07) 55 380 300. Alternatively you can email us at: mail@iagauctions.com

Direct Bank Payments/Postage: Please advise us if you are paying by electronic transfer to ensure that your payments get processed effectively. Make sure to include your name and invoice number in your payment. Please note that items won't usually be dispatched before three days after cleared payment has been confirmed. Where possible, all items will be posted on a Monday or Tuesday.

Bank: ANZ Broadbeach
Account: Paradise Coins Pty Ltd.
T/A International Auction Galleries
BSB: 014 513
Account No: 1027 43868

Happy Collecting to All.

Table of Contents

SESSION 1

World Coins	5
Australian Proclamation Coins	7
Australian Pre Decimal Coins I	9
Australian Pre Federation Banknotes	15
Australian War Related Banknotes	18
Superior Australian Pre Decimal Banknotes	18
Australian Pre Decimal Specimen Banknotes	26
British Coins	26
Australian Pre Decimal Starnotes	28
Australian Decimal Starnotes	29
Australian Decimal Specimen Banknotes	30
World Gold Coins	30
Australian Gold Coins	31
Modern Australian Bullion Coins	32
First Prefix Australian Banknotes	33
Last Prefix Australian Banknotes	35
Misprinted Australian Banknotes	35

SESSION 2

Holey Dollars and Dumps	36
Australian and Related Coin Rarities	38
Australian Pre Decimal Coins II	44
Australian Pre Decimal Proof Coins	55
Unofficial Patterns, Restrikes & Forgeries	57
Internment Camps	57
Australian Interesting Serial Numbered Banknotes	58
Australian Solid Serial Numbered Banknotes	59
Radar Serial Numbered Notes	60
Australian Decimal Banknotes	60
Mistruck Error Coins	62
World Banknotes	65
Ancient Coins	66
Medals and Medallions	67
Miscellaneous Australian Banknotes	67
Miscellaneous Australian Coins	68
Royal Australian Mint Products	72
Miscellaneous & Unreserved Lots	72

World Coins

1	British West Africa Shilling 1913. Some lustre. <i>UNC</i>	\$110 - \$120
---	--	---------------



2	Cocos Keeling Islands 1 Rupee 1913. J Clunies Ross. <i>aVF</i>	\$180 - \$200
---	--	---------------



3	Cocos Keeling Islands 5 Rupee 1913. J Clunies Ross. <i>EF</i>	\$300 - \$350
---	---	---------------



4	Cocos Keeling Islands 25 Cents 1913. J Clunies Ross. Scarce. <i>EF</i>	\$375 - \$400
---	--	---------------



5	Cocos Keeling Islands Proof Set 1977. 5 Cent to 5 Rupees, copper and cupro-nickel issues. Some toning to copper. (7 coins). <i>FDC</i>	\$140 - \$150
---	--	---------------



6 German New Guinea 1 Pfennig 1894A. Some mint red. *UNC/Ch.UNC*

\$350 - \$375



7 German New Guinea 1 Mark 1894A. Light tone with some bloom. *aU/UNC*

\$550 - \$600



8 German New Guinea 5 Mark 1894A. NGC graded AU 53. Old tone. Scarce. *EF/gEF*

\$2900 - \$3000



9 Germany Thaler 1765. Augsburg, Franz I. Crowned arms within branches. Scarce. *gEF*

\$500 - \$550



10 Ireland Shilling 1689. Gunmoney, James II January. *VF*

\$140 - \$150



11 Italy 5 Lire 1873M BN. Vittorio Emanuele II. Toned with some lustre. *UNC*

\$240 - \$250

12 Japan 1 Silver Bu c1837-68. Toned. *aUNC*

\$40 - \$50



13 Mombasa Half Rupee 1890H. Light tone and bloom. *UNC*

\$140 - \$150

14 Mombasa Rupee 1888H. *EF*

\$80 - \$90

15 New Zealand Crown 1949. PCGS graded MS 64. Dark red and gunmetal toned. *Ch.UNC*

\$60 - \$70

16 Southern Rhodesia Crown 1953. PCGS graded MS 64. *Ch.UNC/GEM*

\$110 - \$120

17 Straits Settlements 50 Cent 1920. *EF*

\$30 - \$40



18 USA 2 Cents 1864. Large motto type. Red and brown. *Ch.UNC*
\$280 - \$300

19 USA Commemorative Half Dollar. 1892 Columbian Exposition. Old peripheral tone. *UNC/Ch.UNC*
\$50 - \$60

20 USA Commemorative Half Dollar. 1923S Monroe Doctrine. *gEF*
\$30 - \$40

21 USA Commemorative Half Dollar. 1924S Huguenot-Walloon Tercentenary. *aUNC*
\$80 - \$90

22 USA Commemorative Half Dollar. 1926 US Sesquicentennial. Reverse scratch. *aUNC*
\$30 - \$40

23 USA Commemorative Half Dollar. 1936 Arkansas Centennial. *aUNC*
\$80 - \$90

24 USA Commemorative Half Dollar. 1946S and 1946D Booker T Washington. (2 coins). *Ch.UNC*
\$50 - \$60



25 USA Hawaii Half Dollar 1883. Kalakaua I. Old toned. *aVF*
\$140 - \$150

Australian Proclamation Coins



26 Bolivia 8 Reales 1778PR. Charles III. Light tone with some bloom. *EF*
\$280 - \$300



27 GB Cartwheel Penny 1797. George III. Traces of mint red. Slightly rolled edge from striking. *aUNC*
\$450 - \$500



28 GB Proof Cartwheel Penny George III 1797 Soho. NGC graded PF 64 BN. Attractive deep brown/red colour. Scarce. *FDC*
\$1500 - \$1600



29 GB Proof Cartwheel Twopence George III 1797 Soho. NGC graded PF 64 BN. Brown. Scarce. *FDC*
\$1500 - \$1600

30 GB Sixpence 1787. George III. *EF*
\$30 - \$40

31 GB Shilling 1787. George III. *VF*
\$30 - \$40



32 GB Gold Spade Half Guinea 1794. George III, 5th Head. *EF*

\$700 - \$750



38 Mexico 8 Reales 1740FM. Pillar type, Philip V. Light tone. Scarce. *gEF*

\$600 - \$650



33 GB Gold Spade Guinea 1782. George III. *aEF*

\$500 - \$550



39 Mexico 8 Reales 1809TH. Ferdinand VII. Toned with some mint bloom. *gEF/aUNC*

\$450 - \$500

34 India Half Rupee Bengal Presidency N/D (1900's). Graffiti, AU details, frozen. PCGS graded Genuine. Full mint bloom. *aU/UNC*

\$180 - \$200



40 Netherlands 1 Gulden 1786. VOC. *aUNC*

\$350 - \$400

35 India Rupee c1793. Bengal Presidency. *gVF*

\$50 - \$60



36 India Rupee Bengal Presidency N/D (1900's). Frozen. PCGS graded MS 63. Adjustment marks. *Ch.UNC*

\$280 - \$300



41 Netherlands 1 Gulden 1794. Westfriesland. Old tone with some bloom. *aU/UNC*

\$280 - \$300



37 India Gold Half Mohur Bengal Presidency AH1202 (1900's). KM 111. PCGS graded MS 63. A choice example with full mint bloom and scarce this nice. *Ch.UNC*

\$1400 - \$1500



42 Netherlands Gold 7 Gulden 1750. Holland. Scarce. *aUNC*

\$850 - \$900



- 43 Portugal Half Johanna 1798R. Maria I. A nice example with mint lustre. *aU/UNC*
\$1800 - \$2000



- 50 1941. Nearly full mint red. Scarce. *Ch.UNC*
\$200 - \$220

Australian Pre Decimal Coins I

Halfpenny

- 44 1919. Brown and red. *UNC*
\$140 - \$150
- 45 1922. Brown. Patchy uneven tone with some bloom. *UNC*
\$90 - \$100



- 46 1923. Key date. Dusty brown surfaces. *gFINE*
\$900 - \$1000



- 47 1926. Mint red and brown. *UNC*
\$240 - \$250

- 48 1938. Nearly full mint red. *Ch.UNC*
\$100 - \$110

- 49 1940. Mint lustre red and brown, spot. A tough date. *UNC*
\$160 - \$180



- 51 1942Y. Glossy mint bloom. Scarce. *Ch.UNC*
\$220 - \$240

- 52 1943. Full mint red. *Ch.UNC/GEM*
\$80 - \$90

- 53 1951 PL. PCGS graded MS 65 RB. *GEM UNC*
\$100 - \$120

- 54 1952A. Glossy mint lustre with some red. *UNC/Ch.UNC*
\$90 - \$100

- 55 1953. PCGS graded MS 63RB. Fresh full red. *Ch.UNC*
\$30 - \$40

- 56 1953. PCGS graded MS 64RB. Full mint bloom. *Ch.UNC/GEM*
\$90 - \$100

Penny



- 57 1911. Mint red and brown. *UNC*
\$300 - \$350



58 1912. Mint brown and red. *UNC*
\$280 - \$300

59 1915. PCGS graded XF 45. *gVF/aEF*
\$90 - \$100

60 1917. Brown and red. *UNC*
\$325 - \$350



61 1920 Double Dot. 6 clear Pearls, and scarce this grade. *VF*
\$350 - \$375

62 1925. Key date. *aVF/VF*
\$180 - \$200

63 1931. Indian Die Obverse. Scarce. *VF*
\$90 - \$100

64 1936. Mint brown and red. *Ch.UNC*
\$170 - \$180

65 1939. Mint red and brown. *UNC/Ch.UNC*
\$90 - \$100

66 1941. Mint brown and red. *UNC/Ch.UNC*
\$140 - \$150



67 1942I. Full mint red. *Ch.UNC/GEM*
\$220 - \$240

68 1942Y. Streaky mint bloom. Scarce. *UNC/Ch.UNC*
\$220 - \$240



69 1947Y. Uneven red and brown. Scarce. *UNC*
\$280 - \$300

70 1951. Full mint red. Prooflike strike and fields. *Ch.UNC/GEM*
\$70 - \$75

71 1951Y. Glossy mint brown and red. Scarce. *Ch.UNC*
\$180 - \$200

Threepence



72 1918. PCGS graded MS 63. Toned. *Ch.UNC*
\$270 - \$280

73 1920M. Edge knock, with some bloom. *EF*
\$160 - \$180

74 1942M. Key date. PCGS graded AU 50. *gVF*
\$50 - \$60



75 1942M. Key date. *aEF/EF*
\$350 - \$400

- 76 1944S. PCGS graded MS 65. Mint bloom.
GEM UNC \$40 - \$50
- 77 1952. PCGS graded MS 65. *GEM UNC*
\$140 - \$150
- 78 1953. *Ch.UNC*
\$90 - \$100
- 79 1957. PCGS graded MS 66. High grade.
GEM UNC \$40 - \$50



- 88 1952. Light tone with some bloom. Scarce date. *aU/UNC* \$180 - \$200

- 89 1954. Prooflike surfaces and rims. *GEM UNC* \$25 - \$15

- 90 1956. Light tone with some bloom. *Ch.UNC* \$140 - \$150

Sixpence

- 80 1921. *gVF* \$35 - \$40



- 81 1922. Toned with some lustre. *gVF/aEF* \$140 - \$150

- 82 1936. Sharp prooflike Obverse strike, but with evidence of some light rubbing on the Reverse. *UNC/Ch.UNC* \$90 - \$100

- 83 1941. PCGS graded MS 62. Toned with some lustre. *UNC/Ch.UNC* \$80 - \$100

- 84 1943D. PCGS graded MS 65. Toned with bloom. *GEM UNC* \$80 - \$100

- 85 1945. Mint bloom with light tone. *GEM UNC* \$90 - \$100

- 86 1946. Light tone *Ch.UNC* \$90 - \$100

- 87 1950, 1951. Some streaky tone. (2 coins total). *UNC* \$70 - \$80

Shilling

- 91 1911. A bit flat. *aEF* \$120 - \$140

- 92 1912. Some lustre. *VF/gVF* \$100 - \$120



- 93 1915. Key date. *VF* \$180 - \$200

- 94 1920. *gVF* \$40 - \$50

- 95 1921 Star. Key date. A few old scratches. *FINE* \$70 - \$80



- 96 1921 Star. Key date. Usual flat strike with small edge knocks. *VF* \$220 - \$240

97 1924. *gVF/aEF*
\$80 - \$100

98 1926. Toned. *EF*
\$80 - \$100



99 1928. A few surface marks but well struck.
EF
\$280 - \$300

100 1933. Key date. *VG*
\$60 - \$80

101 1933. Key date. Toned. *FINE*
\$120 - \$140



102 1933. Key date. Old tone. Good band with
8 Pearls. Scarce. *gVF/aEF*
\$450 - \$500

103 1938. PCGS graded MS 62. Partial tone.
Mint bloom. *UNC*
\$80 - \$90

104 1939. Toned with some bloom. *UNC/*
Ch.UNC
\$120 - \$140

105 1941. *UNC/Ch.UNC*
\$110 - \$120



106 1944. Light tone with some bloom.
Ch.UNC
\$160 - \$180

107 1944S. PCGS graded MS 64. Light edge
tone and mint bloom. *Ch.UNC/GEM*
\$130 - \$140

108 1946. PCGS graded MS 64. *Ch.UNC/GEM*
\$100 - \$110

109 1948. Mint bloom. *Ch.UNC*
\$90 - \$100



110 1953. PCGS graded MS 65. Toned. Scarce.
GEM UNC
\$220 - \$240

111 1955. PCGS graded MS 65. *GEM UNC*
\$180 - \$200

112 1960 PCGS MS 65, 1961M PCGS MS 65,
1962 PCGS MS 65, 1963 PCGS MS 65. (4
coins total). *Ch.UNC-GEM*
\$260 - \$280

113 1961. PCGS graded MS 66. *GEM UNC*
\$100 - \$110

114 1962 PCGS graded MS 66. High grade.
GEM UNC
\$90 - \$100

115 1963. PCGS graded MS 66. High grade.
GEM UNC
\$90 - \$100

Florin



116 1910. Toned. *VF*
\$200 - \$220



117 1910. A nice type coin. *gVF*

\$300 - \$325



118 1913. *aVF*

\$180 - \$200

119 1914. *gVF/aEF*

\$140 - \$150



120 1914H. Key date. Polished. *VF*

\$220 - \$240



121 1915. Key date. *aVF*

\$240 - \$260

122 1918, 1919. Some edge staining on 1918. (2 coins). *gVF/aEF*

\$120 - \$140

123 1922. Toned with some bloom. *aEF*

\$150 - \$160



124 1924. Some bloom. *aEF*

\$200 - \$220

125 1927 Canberra. Some toning. (2 coins). *aUNC*

\$50 - \$60



126 1927 Canberra. PCGS graded MS 64+. Lovely old tone with underlying mint bloom. *Ch.UNC/GEM*

\$200 - \$220

127 1931. PCGS graded AU 55. Light tone. *aUNC*

\$50 - \$60

128 1931. Light tone. *UNC*

\$220 - \$240

129 1932. Key date. *VG*

\$120 - \$140

130 1932. Key date. *VG*

\$120 - \$140

131 1932. Key date. *VG*

\$120 - \$140

132 1932. Key date. *VG*

\$120 - \$140



133 1932. Key date. Toned. *FINE*

\$280 - \$300



134 1932 Key date. 6 Pearls. *gFINE*
\$350 - \$400



135 1934/5 Melbourne Centenary. A few surface scratches. *EF*
\$280 - \$300



136 1934/5 Melbourne Centenary. Mint bloom with a good wreath. *aUNC*
\$380 - \$400



137 1934/5 Melbourne Centenary. Prooflike fields with light tone. *aUNC*
\$380 - \$400

138 1934 and 1936. *aEF/gEF*
\$50 - \$60



139 1936. Light tone with some bloom and good fields. *Ch.UNC/GEM*
\$425 - \$450

140 1942. Light tone with mint bloom. *Ch.UNC*
\$110 - \$120

141 1943, 1943S. *Ch.UNC/GEM*
\$180 - \$200

142 1944S. PCGS graded MS 65. Mint bloom. *GEM UNC*
\$100 - \$120

143 1945. Light tone with mint bloom. Scarce this nice. *Ch.UNC*
\$170 - \$180

144 1947. PCGS graded MS 64. *Ch.UNC/GEM*
\$110 - \$120

145 1951. Light tone with fresh mint bloom. Scratch on Obverse. *UNC*
\$110 - \$120

146 1951 Jubilee. PCGS graded MS 64. *Ch.UNC*
\$70 - \$80



147 1952. PCGS graded MS 64. Scarce. *Ch.UNC/GEM*
\$250 - \$275

148 1953, 1954. *Ch.UNC/GEM*
\$140 - \$150

149 1954. PCGS graded MS 64. *Ch.UNC/GEM*
\$200 - \$220

150 1954 Royal Visit. PCGS graded MS 64. *Ch.UNC/GEM*
\$80 - \$90

151 1960. PCGS graded MS 65. *GEM UNC*
\$90 - \$100

152 1960. PCGS graded MS 66. High grade. *GEM UNC*
\$200 - \$220

Australian Pre Federation Banknotes

- 153 1960M PCGS MS 65, 1961M PCGS MS 65, 1962 PCGS MS 64, 1963 PCGS MS 65. (4 coins total). *Ch.UNC-GEM*
\$380 - \$400

- 154 1961. PCGS graded MS 66. High grade. *GEM UNC*
\$110 - \$120

- 155 1963. PCGS graded MS 66. High grade. *GEM UNC*
\$110 - \$120

Crown

- 156 1937. Some bloom. *UNC*
\$90 - \$100



- 157 1937. PCGS graded MS 62. *UNC*
\$110 - \$120



- 158 1937. PCGS graded MS 63. Lovely old deep tone. *Ch.UNC*
\$150 - \$175



- 159 1938. *EF*
\$180 - \$200



- 160 1938. PCGS graded AU 55. Deeply toned with underlying lustre. *aUNC*
\$300 - \$350



- 161 The Leichhardt District Queensland sight note. Messrs John Frazer & Co, altered to Frazer & Manson, No.121 for Five pounds Four shillings and Nine pence. Walloon, 26th Oct 1869, with duty stamps and paid by Bank of New South Wales, Rockhampton (MVR p51). A few pin holes. Rare. *gFINE*
\$400 - \$450



- 162 The Leichhardt District Queensland sight note. Messrs John Frazer & Co. No.1146 for Seven pounds Fifteen shillings. Camboon, 25th January 1870, paid by Bank of New South Wales, Rockhampton. (MVR p51). A few pin holes. Rare. *gFINE*
\$450 - \$500



- 163 G.A. REED, Storekeeper uniface Five Shillings. Wine and Spirit Merchant, Urandangie Queensland, not dated (192-printed). Numbered No. B 458, unsigned. On watermarked paper, imprint W.R.S. & P Ltd. with impressed duty payment. (MVR p83). Minor creases, rust paper clip stains and some edge damage. Rare Calabash issue from North Queensland. *gVF*
\$500 - \$550



164 Four Spanish Dollars Van Diemens Land, Hobart Tas 3-5-1823. Lempriere Weavell and Co. Number 96B. dated 2/12 in ink on back, not crossed and a full whole note (one small edge tear on right) otherwise in remarkable condition for this issue. Ex Nobles sale 71, November 2002. Extremely rare, and one of the finest known. *aEF*

\$12000 - \$14000



165 One Pound Bank of South Australia, Adelaide 1-7-1889. MVR 3c). Fully signed and issued. Very rare in this grade. *aVF*

\$6800 - \$7000



166 Five Pound Federal Bank of Australasia black and white printers Specimen. Melbourne 18-- (circa 1882). (MVR 1). Bottom edge tear. Rare. *VF-EF*

\$1700 - \$1800



167 Five Pound Australian Joint Stock Bank Ltd Cancelled Specimen, NSW. Sydney 1-1-1909. (MVR 4b). Perkins Bacon and Co. Slightly dirty on R/H side. Very rare type. *aEF*

\$5500 - \$6000



168 Five Pound London Chartered Bank of Australia Pre Federation full colour Specimen issue. Melbourne 1-6-1888. (MVR 2d). Scarce, and a very attractive example. *aUNC*

\$5000 - \$5500



169 Ten Pound Australian Joint Stock Bank black and white printers Specimen. No Domicile dated in pencil 2-7-1858. (MVR 1b). Rare. *aUNC*

\$2200 - \$2400



170 Ten Pound The National Bank of Australasia Specimen, Perth Western Australia 1-11-1893 (MVR 4P). Very rare Perth issue. *aUNC*

\$6500 - \$7000



171 Twenty Pound London Chartered Bank of Australasia black and white printers Specimen. Sydney 18-- (circa 1853). (MVR 1a). Stamped specimen with pencil notations, and of a fine style. Very rare. *EF*

\$2400 - \$2600



172 Twenty Pound Commercial Bank of Van Diemen's Land black and white printers Specimen. Hobart Town 18-- (C 1870). Pencil annotation. (MVR 2a). Very rare. *aUNC*

\$3000 - \$3200



173 Twenty Pound The Union Bank of Australasia black and white printers Specimen. Brisbane dated in pencil 1-4-1882. (MVR2c). Three punch holes as usual. Rare. *UNC*

\$2200 - \$2400



174 One Hundred Pound London Chartered Bank of Australasia black and white printers Specimen. Melbourne 18-- (circa 1853). (MVR 1a). Stamped specimen with pencil notations, and some slight smudges/stains. Very rare. *aUNC*

\$3200 - \$3400

Australian War Related Banknotes



175 One Shilling Hay Internment Camps WWII. Camp Seven, 1-3-1941 Robinow-Stahl. Scarce. *gVF/aEF*

\$7000 - \$7500



176 Two Shillings Hay Internment Camps WWII. Camp Seven, 1-3-1941 Mendel-Stahl. Multiple pinholes. Scarce. *aUNC*

\$7000 - \$7500

Superior Australian Pre Decimal Banknotes

Ten Shillings



177 1915 Collins-Allen (R 2d). Folds but presentable, very scarce. *aVF*

\$3700 - \$3800

178 1918 Cerutti-Collins N/Z (R 3bL). Last prefix. Crinkly paper, a little dirty. *FINE*

\$1300 - \$1400



179 1918 Cerutti-Collins (R 3b). Heavy old folds, good original paper and colour. *aVF*

\$2400 - \$2500



180 1918 Cerutti-Collins (R 3b). Crisp paper with good colour. 3 old folds. A nice type note. *gVF*

\$3400 - \$3500



181 1923 Miller-Collins (R 4). Crisp paper, with very minor handling only. Rare this nice. *aU/UNC*
\$10000 - \$11000

187 1927 Kell-Heathershaw (R 6). Edge tears. *POOR/GOOD*
\$425 - \$450

188 1927 Kell-Heathershaw (R 6). Small repaired tear at top. Scarce type note. *aVF*
\$1300 - \$1400



189 1927 Kell-Heathershaw (R 6). A little dirty. A scarce issue in collectable grade. *aVF*
\$2800 - \$3000

182 1926 Kell-Collins (R 5). A little dirty. *FINE*
\$400 - \$450

183 1926 Kell-Collins (R 5). Multiple folds. *aVF*
\$1000 - \$1100

184 1926 Kell-Collins (R 5). Scarce. *gVF*
\$2200 - \$2400

190 1928 Riddle-Heathershaw (R 7). Crisp paper, three folds. *VF*
\$900 - \$1000



185 1926 Kell-Collins (R 5). Crisp and original, with only very light handling. Rare. *aUNC/UNC*
\$14000 - \$15000

191 1928 Riddle-Heathershaw (R 7). *gVF/aEF*
\$1300 - \$1400



192 1928 Riddle-Heathershaw (R 7). Crisp original paper with only light handling. Scarce. *aUNC/UNC*
\$8500 - \$9000



186 1926 Kell-Collins (R 5). Fully crisp and original superb example, as straight from a bundle. Extremely rare in this grade, and equal to any of the finest known. *UNC*
\$17000 - \$18000

193 1933 Riddle-Sheehan (R 8a). Thick signature issue. Good paper although worn with some folding, and some slight staining and rust. A presentable type note for this scarce issue. *FINE*
\$1800 - \$2000

194 1933 Riddle-Sheehan (R 8b). Thin signature type. Cleaned. *gFINE*
\$600 - \$700



195 1933 Riddle-Sheehan (R 9). No imprint type. Very light traces of a fold. A nice type note. Scarce. *gEF*

\$5500 - \$6000

196 1934 Riddle-Sheehan (R 10). Minor dirty marks. *VF*

\$575 - \$600



197 1934 Riddle-Sheehan (R 10). Red imprint type. Crisp, with light handling. *aUNC/UNC*

\$6750 - \$7000



198 1936 Riddle-Sheehan (R 11). Nice type note. Scarce. *UNC*

\$5500 - \$6000

199 1939 Sheehan-McFarlane (R 12). *aEF*

\$220 - \$240

200 1939 Sheehan-McFarlane (R 12). *aEF/EF*

\$325 - \$350

201 1939 Sheehan-McFarlane (R 12). *EF*

\$380 - \$400

202 1939 Sheehan-McFarlane (R 12). *UNC*

\$1300 - \$1400

203 1942 Armitage-McFarlane (R 13). *aUNC*

\$300 - \$325

204 1942 Armitage-McFarlane (R 13). Fresh and crisp. *aUNC*

\$350 - \$380

205 1942 Armitage-McFarlane (R 13). *UNC*

\$900 - \$1000

206 1949 Coombs-Watt (R 14). Crisp. *aUNC*

\$300 - \$320

207 1949 Coombs-Watt (R 14). *UNC*

\$900 - \$1000

208 1952 Coombs-Wilson (R 15). Crisp with original sheen. *aUNC*

\$300 - \$320

209 1952 Coombs-Wilson (R 15). Flicks. *UNC*

\$650 - \$700

210 1954 Coombs-Wilson (R 16). Consecutive pair. *UNC*

\$500 - \$550

211 1961 Coombs-Wilson (R 17). Consecutive pair. *UNC*

\$325 - \$350

212 1961 Coombs-Wilson Reserve (R 17). Consecutive pair. Fresh and crisp. *UNC*

\$350 - \$375

One Pound



213 1914 Collins-Allen (R 18d). Great colour and paper for this early issue that is rarely offered in this sort of high condition. High catalogue value, and with this example being one of the finest known. A fantastic type note for this series. Rare. *gEF*

\$15000 - \$16000



214 1918 Cerutti-Collins (R 21). Consecutive pair. Crisp, original paper, with a small piece missing from top right hand edge of first note. Minor paper stain. Rare, especially as a pair with only a few pairs known. *gFINE*

\$4200 - \$4400



215 1918 Cerutti-Collins (R 21). Crisp and attractive, with good colour. A nice type note. *gVF*

\$3000 - \$3200



216 1918 Cerutti-Collins (R 21). Three light visible folds but good paper and colour. A great type note. Scarce. *aEF*

\$3500 - \$3600



217 1923 Miller-Collins (R 23a). Imprint type. Some slight handling and corner flick. Scarce. *aUNC*

\$6800 - \$7000

218 1923 Miller-Collins (R 23b). No imprint type. *VF*

\$1300 - \$1400



219 1923 Miller-Collins (R 23b). No imprint type. Reverse minor stain, crisp. *EF*

\$3400 - \$3500

220 1926 Kell-Collins (R 24). Crisp, crinkly paper. *FINE*

\$350 - \$400

221 1926 Kell-Collins (R 24). Crisp, folds. *VF*

\$600 - \$650

222 1926 Kell-Collins (R 24). Good firm paper, with old light folds. *aEF*

\$1400 - \$1600



223 1926 Kell-Collins (R 24). Crisp and original, some very light handling. Scarce. *aUNC/UNC*

\$6250 - \$6500



224 1926 Kell-Collins (R 24). Crisp and fresh paper, with a slight trace of a bundle ripple as straight out of a bundle. Rare this nice. *UNC*

\$13000 - \$14000



225 1927 Kell-Heathershaw (R 25). Flat, traces of folds. Scarce. *gEF/aUNC*
\$4700 - \$4800



226 1926 Kell-Heathershaw (R 25). Crisp, scarce this nice. *aUNC/UNC*
\$6750 - \$7000



227 1927 Kell-Heathershaw (R 25). Consecutive trio. Fully crisp and original notes, with only very light traces of handling. Extremely rare in this grade and as a run of three. *aU/UNC*
\$34000 - \$35000

228 1927 Riddle-Heathershaw (R 26). Cleaned. *VF*
\$280 - \$300

229 1927 Riddle-Heathershaw (R 26). *gEF*
\$650 - \$700

230 1927 Riddle-Heathershaw (R 26). Crisp and fresh original note. *UNC*
\$3800 - \$4000



231 1927 Riddle-Heathershaw (R 26). Consecutive pair. Crisp, with just a hint of a roll fold and scarce. *UNC*
\$6500 - \$7000

232 1932 Riddle-Sheehan (R 27a). Thick signature type. Repaired and cleaned. *VF*
\$600 - \$650

233 1932 Riddle-Sheehan (R 27b). Thin signature type. A little dirty, cleaned. *gFINE*
\$280 - \$300

234 1932 Riddle-Sheehan (R 27b). Thin signature type. Crisp, old folds. *aVF*
\$800 - \$850

235 1932 Riddle-Sheehan (R 27b). Thin signature type. Crisp, with folds. *aVF*
\$800 - \$850

236 1932 Riddle-Sheehan (R 27b). Thin signature type. Crisp, pinholes. Scarce this grade. *gEF/aUNC*
\$2100 - \$2200

237 1933 Riddle-Sheehan (R 28). *aEF*
\$600 - \$700

238 1933 Riddle-Sheehan (R 28). *aUNC/UNC*
\$1300 - \$1400

239 1938 Sheehan-McFarlane (R 29). *aUNC/UNC*
\$625 - \$650

240 1938 Sheehan-McFarlane (R 29). Consecutive pair. *UNC*
\$1600 - \$1800

241 1938 Sheehan-McFarlane (R 29). Consecutive pair. *UNC*
\$1600 - \$1700

242	1938 Sheehan-McFarlane (R 29). Consecutive run of 4. Some light roll folds. <i>aUNC</i>	\$1500 - \$1600	248	1953 Coombs-Wilson (R 33). Consecutive run of 5. <i>UNC</i>	\$700 - \$800
243	1942 Armitage-McFarlane (R 30a). Consecutive pair. <i>UNC</i>	\$800 - \$900	249	1961 Coombs-Wilson (R 34a). Consecutive pair. <i>UNC</i>	\$280 - \$300
244	1942 Armitage-McFarlane (R 30b). <i>UNC</i>	\$375 - \$400	250	1961 Coombs-Wilson (R 34b). Consecutive pair. <i>UNC</i>	\$280 - \$300
245	1949 Coombs-Watt (R 31). Consecutive trio. <i>UNC</i>	\$1100 - \$1200	251	1961 Coombs-Wilson Reserve (R 34b). Emerald green Reverse. Consecutive pair. Fresh, crisp and superb. <i>UNC</i>	\$280 - \$300
246	1952 Coombs-Wilson (R 32). <i>UNC</i>	\$375 - \$400	252	1961 Coombs-Wilson Reserve (R 34b). Emerald green Reverse. Consecutive run of 5. Fresh and crisp. <i>UNC</i>	\$700 - \$750
247	1953 Coombs-Wilson Commonwealth (R 33). Consecutive pair. Superb. <i>UNC</i>	\$340 - \$350			



253 Five Pound 1913 Collins-Allen (R 35). No mosaic type. Multiple pinholes, with old dirty folds and creases, and a tiny edge split at top in the margin, but with good colour for this rare issue. This note's design features a unique Reverse design, which was subsequently later changed, and the 'mosaic' of 5's was added in to prevent forgery of the issue. 10 genuine issued notes are recorded, with this the first example sold since the record breaking note sold in IAG's Sale 70 in 2009. Ex Max Stern 1976 (as VF) and Private Sale 2007 (for \$80,000). Extremely rare and a highly desirable issue that is rarely offered, and now at a most attractive price. *FINE*

\$34000 - \$35000



254 1914 Collins-Allen (R 36b). A little dirty looking, but a whole note. Scarce. *VG*
\$2900 - \$3000

255 1918 Cerutti-Collins (R 37b). Slight paper surface damage on front R/H side, but still a presentable type note. *aVF*
\$2100 - \$2200



256 1924 Kell-Collins (R 38a). Black signature type. Good paper and flattened folds. Scarce. *gVF/aEF*
\$3200 - \$3400

257 1927 Riddle-Heathershaw (R 42). Cleaned. *gFINE*
\$500 - \$550

258 1927 Riddle-Heathershaw (R 42). Type note. *VF/gVF*
\$1300 - \$1400

259 1927 Riddle-Heathershaw (R 42). A couple of corner folds, and a good type note. *EF*
\$2800 - \$3000

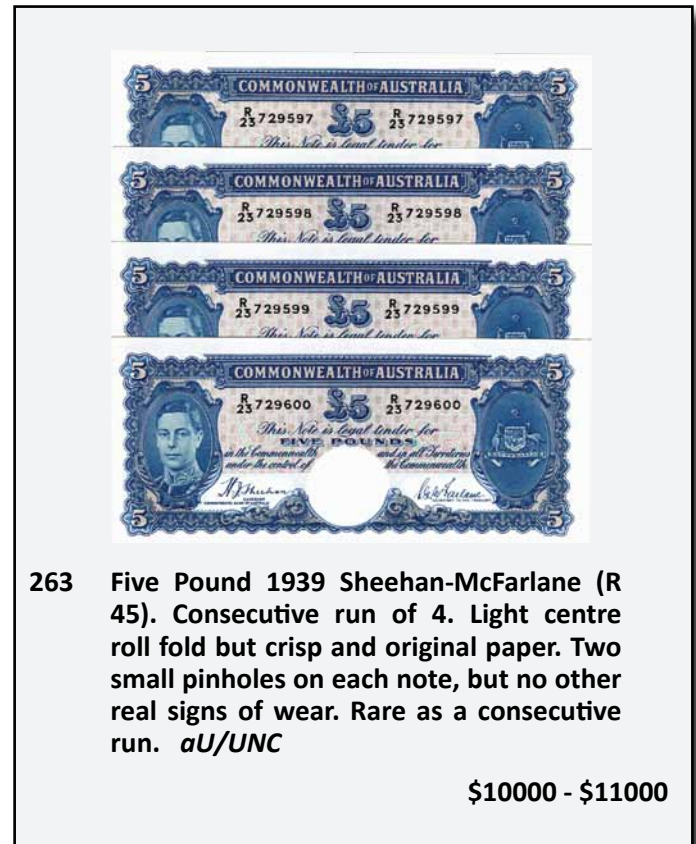


260 1927 Riddle-Heathershaw (R 42). Crisp and fresh, part of the run of Q/21 notes straight from a bundle, and a superb type note. Rare. *UNC*
\$17000 - \$18000

261 1933 Riddle-Sheehan (R 44b). White face of king type. Centre fold. *aEF*
\$2500 - \$2600



262 1939 Sheehan-McFarlane (R 45). Crisp with original sheen and paper. Some light traces of handling. *aUNC*
\$3500 - \$3700



263 Five Pound 1939 Sheehan-McFarlane (R 45). Consecutive run of 4. Light centre roll fold but crisp and original paper. Two small pinholes on each note, but no other real signs of wear. Rare as a consecutive run. *aU/UNC*
\$10000 - \$11000

264 1941 Armitage-McFarlane (R 46). Crisp and fresh. *EF*
\$450 - \$500

265 1949 Coombs-Watt (R 47). Crisp and fresh. *EF*
\$450 - \$500

266 1949 Coombs-Watt (R 48). Crisp and fresh. *EF*
\$450 - \$500

267 1960 Coombs-Wilson Reserve (R 50). *UNC*
\$300 - \$350

268 1960 Coombs-Wilson (R 50). (2 notes).
UNC
 \$600 - \$700

Ten Pound



269 1927 Riddle-Heathershaw (R 55). Several
 folds but a nice type example. Scarce.
aEF
 \$5500 - \$6000



270 1927 Riddle-Heathershaw (R 55). A great
 type note with very little traces of wear
 and only some minor handling. Scarce.
gEF
 \$8500 - \$9000

271 1934 Riddle-Sheehan (R 57). Cleaned. *VF*
 \$1450 - \$1500

272 1934 Riddle-Sheehan (R 57). A nice type
 note for this one year of issue type. Rare
 in this grade. *UNC*
 \$18000 - \$20000

273 1940 Sheehan-McFarlane (R 58). Cleaned.
gFINE/aVF
 \$650 - \$700

274 1943 Armitage-McFarlane (R 59). Cleaned.
gVF
 \$300 - \$325

275 1943 Armitage-McFarlane (R 59). Mark on
 Obverse. *EF*
 \$725 - \$750

276 1943 Armitage-McFarlane (R 59). Fresh,
 flicks and edge fold. *gEF/aUNC*
 \$1000 - \$1100

277 1943 Armitage-McFarlane (R 59). Crisp,
 with some light handling, flicks. *aUNC/
 UNC*
 \$1600 - \$1800

278 1943 Armitage-McFarlane (R 59). Nice crisp
 paper. Scarce. *UNC*
 \$5250 - \$5500

279 1949 Coombs-Watt (R 60). Mark on
 Obverse. *gVF*
 \$350 - \$375

280 1949 Coombs-Watt (R 60). Consecutive
 pair. Crisp and fresh with some light
 handling. *gVF/aEF*
 \$800 - \$900

281 1949 Coombs-Watt (R 60). Fresh, with light
 flicks. *aUNC*
 \$1400 - \$1500

282 1949 Coombs-Watt (R 60). Scarce. *UNC*
 \$5250 - \$5500

283 1954 Coombs-Wilson (R 62). Consecutive
 pair. Crisp and fresh with some minor
 handling. *aU/UNC*
 \$1100 - \$1200

284 1960 Coombs-Wilson Reserve (R 63). Crisp.
aUNC
 \$380 - \$400

285 1960 Coombs-Wilson (R 63). Consecutive
 pair. *aUNC*
 \$700 - \$750

286 1960 Coombs-Wilson (R 63). Consecutive
 pair. *aUNC/UNC*
 \$850 - \$900



287 Ten Shillings 1938 Sheehan-McFarlane (R 12). Type H. Crossed in black on both sides, and punched 'Specimen' from an issued note, serial D/98 120007. Extremely rare George VI issue, with only a few examples of this type known. **UNC**

\$55000 - \$60000

British Coins



288 Penny 1848/7 Overdate Victoria. Brown with some red. **aUNC**

\$180 - \$200

289 Penny 1853 Victoria. Brown with hints of lustre. **aUNC**

\$120 - \$140

290 Penny 1855 Victoria. Traces of mint red. **gEF/aUNC**

\$80 - \$90

291 Penny 1858/7 Overdate Victoria. Brown. **gEF/aUNC**

\$120 - \$140

292 Penny 1858 Victoria. Brown with some red lustre. **aUNC**

\$100 - \$120

293 Penny 1860 Victoria. Brown and red. **aU/UNC**

\$100 - \$120

294 Penny 1862 Victoria. Even brown with a hint of lustre. **gEF**

\$90 - \$100

295 Penny 1875 Victoria. Some mint red. **gEF**

\$100 - \$120

296 Penny 1875H Victoria. Scarce date. **aVF**

\$100 - \$120

297 Penny 1881 Victoria. Brown and red. **aU/UNC**

\$100 - \$120



298 Penny 1884 Victoria. Mint red. *UNC*
\$120 - \$140



304 Proof Shilling George III 1787. Esc
1226-Hearts. NGC graded PF 63. Nice old
tone. Scarce. *FDC*
\$2700 - \$2800



299 Penny 1892 Victoria. Mint red and brown.
UNC
\$120 - \$140



305 Halfcrown George II 1746/5. (S.3695a).
Toned with underlying bloom. *gEF*
\$1000 - \$1100



300 Penny 1894 Victoria. Mostly mint red.
UNC
\$170 - \$180



306 Crown 1821 George IV Secundo. Toned,
edge knocks. *gVF*
\$300 - \$320



301 GB Cartwheel Twopence 1797 George III.
PCGS graded AU 50. Mostly brown. *aUNC*
\$400 - \$425



307 Crown George IV 1821. (S.3805) Secundo.
Proof like mirror fields with attractive
peripheral tone. Scarce. *aFDC*
\$3900 - \$4000

302 Threepence 1678 Charles II. Light tone with
bloom. *EF*
\$120 - \$140



308 Crown George IV 1822. (S.3805) Tertio.
Deeply toned. *gEF/aUNC*
\$1400 - \$1500

303 Sixpence 1951. Mis struck off centre, with
a 2mm raised rim lip. *EF*
\$30 - \$40



309 Crown Victoria, Gothic type 1847. (S.3883). Undecimo, Rev. four crowned shields cruciform, emblems in angles. Nice peripheral tone. Scarce. *gEF*

\$2400 - \$2500



310 Gold Five Guineas George II 1729 East India Company (E.I.C) under head. Young head type (S.3664). Minor adjustment marks on Obverse, and traces of mint bloom. Rare. *gVF/aEF*

\$14000 - \$15000



311 Counterstamped Half Dollar Emergency issue on Spanish 4 Reales 1780PR. Oval counterstamp, George III (S. 3767). Scarce. *gVF*

\$800 - \$900



312 Counterstamped Dollar Emergency issue 1804 George III. Oval counterstamp, struck on a Mexico 8 Reales 1795FM. Dark tone, with a good counterstamp. *gVF*

\$700 - \$750

Ten Shillings



313 1942 Armitage-McFarlane (R 13s). Consecutive pair. Paper somewhat toned with a few minor spots from storage, but natural and crisp original notes with virtually no wear otherwise. Extremely rare, as the only known consecutive pair of the rarest of all of the starnote series. A new discovery, and unique as a pair. *gVF*

\$22000 - \$24000



314 1949 Coombs-Watt (R 14s). Printed off centre, possibly trimmed? Slight dirt marks. Scarce. *aVF*

\$2000 - \$2200

315 1954. Coombs-Wilson (R 16s). A little dirty, pink ink mark on back. *FINE*

\$600 - \$650

Postal / Online Bidders:

Postal / Fax bids finishes
5pm AEST Friday 11th April 2014.

Online postal bidding finishes at
12pm AEST Sunday 13th April!



316 1954 Coombs-Wilson (R 16sL). Commonwealth issue. Last prefix AE 92. Fresh and crisp, one small pinhole and minor edge flick, otherwise as if straight out of a bundle. Rare in this grade, with only a few known. *UNC*

\$11000 - \$12000

One Pound

317 1961 Coombs-Wilson (R 34as). *VF*

\$800 - \$900

318 1961 Coombs-Wilson (R 34bs). A little dirty. *aFINE*

\$450 - \$500

319 1961 Coombs-Wilson (R 34bs). *gFINE*

\$550 - \$600



320 1961 Coombs-Wilson (R 34bs). A nice flat example with no real signs of wear. Rare this grade. *UNC*

\$10000 - \$11000

Five Pound

321 1960 Coombs-Wilson (R 50s). Pinhole, cleaned. *FINE*

\$1000 - \$1100



322 1960 Coombs-Wilson (R 50s). Crisp, with a light centre fold. Scarce as such, and a great type example at the right price. *gEF/aUNC*

\$6250 - \$6500



323 1960 Coombs-Wilson (R 50s). Flat, with a trace of a light centre fold. Rare this grade. *aUNC*

\$14000 - \$15000

Australian Decimal Starnotes

One Dollar



324 1968 Coombs-Randall (R 72s). Nice fresh example. Light tellers flick. Scarce. *UNC*

\$5500 - \$6000

325 1969 Phillips-Randall (R 73s). *VF*

\$450 - \$500

326 1969 Phillips-Randall (R 73s). *aUNC*

\$1200 - \$1400

Two Dollar

- 327 1966 Coombs-Wilson (R 81s). *gFINE*
\$220 - \$240
- 328 1966 Coombs-Wilson (R 81s). A little off
centre. *aVF*
\$500 - \$550

Ten Dollar

- 329 1966 Coombs-Wilson (R 301s). *FINE*
\$220 - \$240

Twenty Dollar

- 330 1967 Coombs-Randall (R 302sL). Last
prefix. *aVF*
\$850 - \$900
- 331 1968 Phillips-Randall (R 403s). Slight rust
stains. *gFINE*
\$700 - \$750

Australian Decimal Specimen Banknotes

Ten Dollar

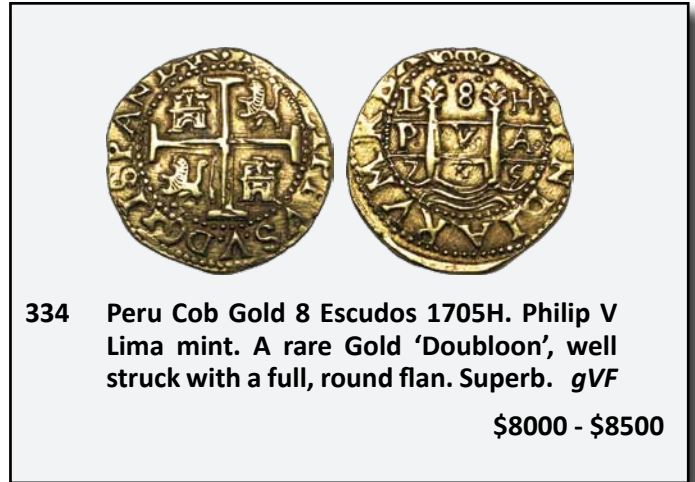


- 332 1966 Coombs-Wilson Type I (SP 04).
Serials SAA 000000. Scarce. *UNC*
\$3400 - \$3500

World Gold Coins



- 333 Papua New Guinea Proof 50 Kina 1994.
FDC
\$340 - \$350



- 334 Peru Cob Gold 8 Escudos 1705H. Philip V
Lima mint. A rare Gold 'Double', well
struck with a full, round flan. Superb. *gVF*
\$8000 - \$8500

- 335 South Africa Kruggerrand 1973. *UNC*
\$1400 - \$1450

- 336 South Africa Kruggerrand 1976. *UNC*
\$1400 - \$1450



- 337 USA \$2 1/2 1912. Indian head. *aVF*
\$180 - \$200



- 338 USA \$10 1926. Indian head. *EF*
\$650 - \$700



- 339 USA \$20 1904. Double Eagle. *gVF*
\$1300 - \$1400

- 340 USA \$20 1910. Liberty. *gVF*
\$1300 - \$1400

Sovereign

Half Sovereign



341 1856 Sydney Mint Young Head. Type 1. Some minor surface marks but with minimal wear, and attractive mint lustre. A great type example of this rare date, and one of the finest known. Very rare in this grade. *UNC*

\$35000 - \$36000

342 1882M Young Head. PCGS graded AU 58. Well struck, a few Obverse marks. Scarce. *aUNC*

\$3000 - \$3250



343 1882M Young Head Type 5/3. Beautiful soft mint bloom, and virtually unmarked fields, fully struck up. One of the finest known. Rare. *GEM UNC*

\$11000 - \$12000

344 1887M Jubilee Head. PCGS graded MS 62. Scarce this nice. *Ch.UNC*

\$2750 - \$3000



345 1855. Sydney Mint. Victoria Young Head. Some Reverse contact, but a nice type example. Scarce. *gVF/aEF*

\$3400 - \$3500



346 1858 Sydney Mint Young Head. A key date in the Sydney Mint series. Well struck with only some light surface marks and mint bloom. One of the finest known. Rare. *UNC*

\$30000 - \$32000



347 1870 Sydney Mint Young Head Type II. A lovely, well struck example with mint bloom. Rare. *Ch.UNC*

\$2100 - \$2200



348 1879S Shield Young Head. Variety O for C in 'Victoria' type. PCGS graded AU 53. Most unusual and rare type. *aUNC*

\$5800 - \$6000



360 1917P. George V. *gVF*

\$340 - \$350

Modern Australian Bullion Coins

349 1880S Shield Young Head. Variety Inverted 'A' for V in 'Victoria' type. PCGS graded AU 53. Unusual and rare. *aUNC*

\$4800 - \$5000

350 1875M Young Head. Ex The Douro cargo, sank 2nd April 1882. Soft bloom. *UNC/Ch.UNC*

\$1700 - \$1800

351 1876M Young Head. Ex The Douro cargo, sank 2nd April 1882. Fresh mint bloom, a choice coin. Scarce. *Ch.UNC*

\$2000 - \$2200

352 1879S Young Head. Rare date, well struck. (Mc 156). Ex The Douro cargo, sank 2nd April 1882. Very scarce. *UNC*

\$4400 - \$4500

353 1880M Young Head MT (Mc 159). Ex The Douro cargo, sank 2nd April 1882. Mint bloom. *UNC/Ch.UNC*

\$1800 - \$2000

354 1881M Young Head (Mc 161). Ex The Douro cargo, sank 2nd April 1882. Soft bloom. *UNC/Ch.UNC*

\$1400 - \$1500

355 1884M. Young Head. Mint bloom. *UNC*

\$700 - \$750

356 1887M Victoria Jubilee Head. *gEF*

\$380 - \$400

357 1888M Victoria Jubilee Head. *gEF*

\$380 - \$400

358 1915S. George V. *VF*

\$340 - \$350

359 1917M. George V. *gVF*

\$340 - \$350

361 2000 Sydney Olympics 1 Kilo Silver Proof coin. In box of issue. *FDC*

\$750 - \$800

362 Perth Mint 100 Ounce silver bar.

\$1900 - \$2000

363 Perth Mint 100 Ounce silver bar.

\$1900 - \$2000

364 The Australian Gold 1oz Kangaroo 1990. *UNC*

\$1300 - \$1350

365 The Australian Gold 1oz Kangaroo 1996. *UNC*

\$1300 - \$1350



366 The Australian Gold 1oz Kangaroo 2008. *UNC*

\$1300 - \$1350

367 The Australian Gold 1oz Kangaroo 2011. *UNC*

\$1300 - \$1350



368 The Australian Gold 1oz Kangaroo 2011. *UNC*

\$1300 - \$1350

369 The Australian Gold 2oz Kangaroo 2008. *UNC*

\$2600 - \$2700



370 The Australian Gold 10oz Kangaroo 1991. *UNC*
\$13000 - \$13500



373 The Australian Family of Precious Metals 1995. 4 coin set with 1oz Silver Kookaburra Proof, 1oz Gold Nugget Proof, 1oz Koala Platinum Proof, 1oz The Australian Emu Palladium Proof. In original wooden box of issue with certificate. *FDC*
\$2900 - \$3000



371 Platinum Proof Koala 2oz 1991. In jarrah box of issue with certificate and felt bag. *FDC*
\$2600 - \$2700



374 The Australian Nugget Gold Proof 5 coin set 2000, 1oz to 1/20th oz plus medallion (medallion toned). In original jarrah box with certificate and felt bag. *FDC*
\$2500 - \$2600

First Prefix Australian Banknotes

One Dollar

375 1966 Coombs-Wilson AAA (R 71aF). Centre bend. *aUNC*
\$280 - \$300

Two Dollar



372 Platinum Proof Koala 2oz 1997. In jarrah box of issue with certificate and felt bag. *FDC*
\$2600 - \$2700



376 1966 Coombs-Wilson FAA (R 81aF). Scarce. *aUNC*
\$800 - \$900

Five Dollar

- 377 1967 Coombs-Randall NAA (R 202F). *VF*
\$100 - \$120
- 378 1967 Coombs-Randall NAA (R 202F). *VF*
\$100 - \$120
- 379 1967 Coombs-Randall NAA (R 202F). Low
number, ex NPA archives. *aUNC*
\$400 - \$425
- 380 1967 Coombs-Randall NAA (R 202F). *UNC*
\$425 - \$450
- 381 1992, \$10 1993, \$20 1994, \$50 1995, \$100
1996. Polymer dated issues. (5 notes).
UNC
\$250 - \$275

Ten Dollar



- 382 1966 Coombs-Randall SAA (R 301F).
Consecutive pair. Hint of a centre bend.
aUNC/UNC
\$350 - \$375
- 383 Assorted lot of polymer First and Last
issues. Includes 2002 AA02 (consecutive
run of 4), GL02 (two pairs), AA03
(consecutive run of 4), DF03 (consecutive
run of 4), AA06 (consecutive run of 4). (20
notes total) *UNC*
\$250 - \$260

Twenty Dollar

- 384 1966 Coombs-Wilson XAA (R 401F). *UNC*
\$220 - \$240

Fifty Dollar

- 385 1973 Phillips-Wheeler YAA (R 505). Small
edge repaired tear. *aUNC*
\$325 - \$350

- 386 1973 Phillips-Wheeler YAA (R 505). *UNC*
\$550 - \$600
- 387 1973 Phillips-Wheeler YAA (R 505F). *UNC*
\$550 - \$600

One Hundred Dollar

- 388 1984 Johnston-Stone ZAA (R 608F). *UNC*
\$300 - \$350

Sets/Albums



- 389 1991 NPA Twenty Fifth Anniversary of
Decimal Currency set. In black album of
issue, comprising 10 Shillings - 10 Pound
last prefixes, and \$1, \$2, \$10 and \$20 First
prefix low number issues. Set 425 of 800
issued. *aU/UNC*
\$5400 - \$5500



- 390 1994 NPA Triple Anniversary set. In black
album of issue, comprising \$5, \$50 and
\$100 First prefix low number issues. Set
473 of 800 produced, and matching serial
numbers to the previous set. *aU/UNC*
\$1700 - \$1800

One Dollar

- 391 1982 Johnston-Stone DPS (R 78L), \$2 1985 Johnston-Fraser LQG (R 89L), \$5 1991 Fraser-Cole QPG (R 213L), \$10 1991 Fraser-Cole MRR (R 313bL), \$20 1993 Fraser-Evans ADK (R 415L), \$50 1993 Fraser-Evans FAB (R 515L), \$100 1991 Fraser-Cole ZLD (R 613L). (7 notes). *UNC*
- \$325 - \$350

Five Dollar

- 392 Assorted lot of polymer First and Last issues. Includes 2001 AA01 (4 notes). (These all well circulated, rest *UNC*). JD01 (Consecutive run of 4), 2002 BA02 (consecutive run of 4), EA02 (consecutive run of 4), BA03 (trio and single), EA03 (consecutive run of 4), BA05 (trio and single), KC05 (trio and single). (32 notes total) *FINE-UNC*
- \$200 - \$220

Ten Dollar

- 393 1991 Fraser-Cole MRR (R 313). No plate letter. Consecutive pair. *UNC*
- \$100 - \$120
- 394 1991 Fraser-Cole MRR (R 313). 2nd note with IQ plate letter, so from very late in print run. Consecutive pair. *UNC*
- \$250 - \$280
- 395 1991 Fraser-Cole MRR (R 313). Consecutive run of 10, every third note with Q plate letter, as per the printing process. *UNC*
- \$550 - \$600

Twenty Dollar

- 396 Assorted lot of polymer First and Last issues. Includes 2002 AA02 (consecutive run of 4 and single), KM02 (pair and two singles), AA03 (consecutive run of 4), DA03 (consecutive run of 4), AA05 (consecutive run of 4), GB05 (two pairs). (25 notes total) *UNC*
- \$600 - \$650

Fifty Dollar

- 397 Assorted lot of polymer First and Last issues. Includes 1997 AA99 (pair and single), PE99 (pair and single), 2003 AA03 (pair and single), DA03 (pair and single), AA04 (pair), GB04 (pair), AA05 (pair), JC05 (pair). (20 notes total) *UNC*
- \$1200 - \$1300

One Hundred Dollar

- 398 1971 Fraser-Cole ZLD (R 613). Consecutive pair. *UNC*
- \$325 - \$350
- 399 Assorted lot of polymer First and Last issues. Includes 1998 AA99 (pair) and JK99 (pair). (4 notes total). *UNC*
- \$500 - \$550

Misprinted Australian Banknotes

Five Dollar




- 400 1983. Missing all intaglio (black) print on Reverse. *aUNC*
- \$1700 - \$1800



- 401 1985. Missing all simultan (colour) print on the back. Some Obverse stains. *gVF*
- \$800 - \$900

Ten Dollar



402 1991. Missing all intaglio (black) print on Obverse. Scarce. *UNC*

\$1800 - \$2000



403 N/D (1991?). Missing all intaglio (black) print on Obverse including serial numbers and signatures, not often seen as such. Rare. *UNC*

\$1900 - \$2000

Twenty Dollar

- 404 1990. Missing all simultan (colour) print on Reverse. Scarce. *UNC*
- \$1700 - \$1800

Fifty Dollar

- 405 1985. 30% wet in transfer on back including full Florey portrait and second '50' on top left. *EF*
- \$400 - \$450
- 406 1990. Missing all simultan (colour) print on Reverse. Scarce. *UNC*
- \$1700 - \$1800

One Hundred Dollar

- 407 1985. Missing all simultan (colour) print on Obverse, with missing signatures also. Scarce. *UNC*
- \$1500 - \$1600

Holey Dollars and Dumps



- 408 Dump Fifteen Pence 1813 NSW. Type D/2. Mostly worn flat, with only a hint of crown and lettering. Scarce. *POOR*
- \$600 - \$700



- 409 Dump Fifteen Pence 1813 NSW Type A/1. Plugged hole, scratch on Obverse. Worn, but with Crown visible and most lettering. Scarce. *GOOD/VG*
- \$1800 - \$2000

CONSIGNMENTS:

Consignments for our next auction, Sale 80 in September 2014 close at the end of July 2014. Contact us now to make sure that you dont miss out.



410 Dump 15 Pence 1813 NSW. Type A/1. A great type coin, with a clear crown, and strong lettering throughout. A well priced example of this rare Colonial issue. *VF*

\$32000 - \$34000



411 Dump 15 Pence 1813 NSW. Type D/2. A good type example, with a strong crown, and traces of original undertype on the Reverse. Another well priced example of this rare Colonial issue. *aVF/VF*

\$37000 - \$38000



412 Adelaide Pound 1852 Type II. Soft old toning with mirror like mint bloom. A beautiful and well struck example with unmarked fields and great eye appeal. One of the nicest examples of this rare and historically significant coin we have seen, and one of the finest known. Very rare. *Ch.UNC*

\$80000 - \$85000



413 Fourpence W.J Taylor, Kangaroo Office, Victoria. Pattern N/D (C. 1860) in copper (A 78/R 38). Rarity 10, 35mm. Obverse Four Pence' & large number 4 in centre, Reverse is seated lady with 'Australia' above. A rare coin with great provenance, being Ex Spink Oct 1977, lot 533 and Nobles March 1990, lot 1405. Some mint red and purple lustre. Very rare and superb. *aUNC*

\$36000 - \$38000



414 Proof Halfpenny and Penny pair 1935. The Halfpenny full mint red tone, the Penny red and brown tone. A superior grade pair, and one of the finest known. Very rare. FDC

\$31000 - \$32000



415 Proof Halfpenny 1947Y. George VI. Red and brown tone. Very rare.

FDC

\$14000 - \$15000



416 Proof Penny 1947Y. George VI. Rich deep burgundy red and blue tone, giving the coin lovely eye appeal. Very rare. *FDC*

\$17000 - \$18000



417 Proof Penny 1952A. George VI. Mostly red tone. Very rare. *FDC*

\$16000 - \$17000



418 Proof Threepence 1951PL. George VI. Fully struck up rims, with bright bloom. Rare. *FDC*

\$14000 - \$15000



419 Proof Sixpence 1934. George V. Deep green and red toned, with subdued bloom. Very rare. *FDC*

\$14000 - \$15000



420 Proof Shilling 1934. A superior example, with nice wire rims and soft old gunmetal tone and underlying bloom, with unmarked proof fields. Rare. *FDC*

\$17000 - \$18000



421 Specimen Sovereign 1922S. George V. Fully struck up with superb, unmarked fields, and soft mint bloom. Ex R. Jaggard collection 1989, P. Terry Collection, and The Quartermaster Collection (sold for \$91,268). One of only 2 examples known, and a superb rarity. **FDC**

\$45000 - \$50000

Australian Pre Decimal Coins II



Halfpenny



422 1912. Full mint red. **Ch.UNC**

\$600 - \$700



423 1914. Red and brown with good colour for this date. **UNC/Ch.UNC**

\$700 - \$800



426 1919. PCGS graded MS 64RB. Nearly full mint red. **Ch.UNC/GEM**

\$600 - \$650

427 1922. Red and brown, with mint bloom. **UNC**

\$370 - \$380



428 1922. Full glossy mint red bloom.
Ch.UNC

\$525 - \$550



434 1932. PCGS graded MS 64BN. Some fresh red lustre. *Ch.UNC*

\$380 - \$400



429 1923. Key date, full centre diamond, die cracks on Reverse. Attractive even brown. *VF*

\$1600 - \$1800



435 1952A. PCGS graded MS 63RB. Mint red and green bloom. Scarce. *Ch.UNC*

\$280 - \$300

Penny



430 1923. Key date. Well struck with full clear band and nice die cracks. Some minor verdigris and edge knocks, else a superior example. Rare. *aEF/EF*

\$4000 - \$4500



436 1911. Full bright mint red. Slight metal flaw on Reverse on E of 'One'. *Ch.UNC*

\$800 - \$900



431 1923. Key date. Full, clear band with 8 pearls visible. Rare in this grade. *aEF*

\$5250 - \$5500



437 1911. Full fresh mint red. A superb example, with lovely fields. *Ch.UNC/GEM*

\$900 - \$1000

432 1926. Red and brown. *UNC*

\$280 - \$300

433 1927. Mint red and brown, the Reverse mostly brilliant. *UNC*

\$280 - \$300



438 1913. Nearly full mint red. Scarce date. *Ch.UNC*

\$1800 - \$2000



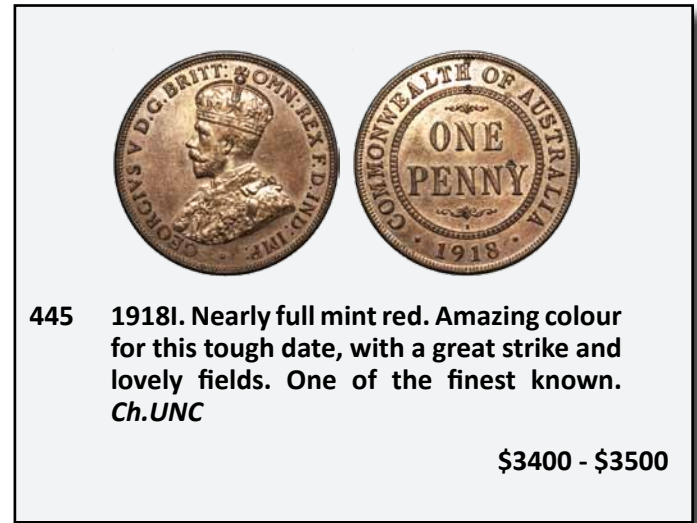
439 1914. Mint red and brown. *UNC*
\$1400 - \$1500



444 1917. Full blazing mint red, with specimen like strike, surfaces and fields. An outstanding example, and one of the finest known. *GEM UNC*
\$2200 - \$2400



440 1915. Key date. Red and brown, with considerable colour for this date. *UNC*
\$2200 - \$2400



445 1918I. Nearly full mint red. Amazing colour for this tough date, with a great strike and lovely fields. One of the finest known. *Ch.UNC*
\$3400 - \$3500



441 1915H. Some fresh mint red and brown bloom. A nice, well struck example of this tough date. *UNC*
\$1800 - \$2000



446 1919. Mint red and brown. *UNC*
\$600 - \$700



442 1916. Slightly toned on Reverse edge otherwise full mint red with specimen like qualities. *Ch.UNC*
\$550 - \$600



447 1920 Plain. PCGS graded XF 40. Scarce. *gVF/aEF*
\$800 - \$900



443 1917. Mostly mint red and brown. Well struck. *Ch.UNC*
\$450 - \$500



448 1920 dot above. PCGS graded MS 63RB. Red and brown. *Ch.UNC*

\$1400 - \$1500



449 1920 dot below. Mint red and brown with some mint bloom on the Obverse. *UNC*

\$1000 - \$1100



450 1925. Key date. Full band with most of 7/8th Pearls. *EF*

\$600 - \$700



451 1930. Key date. Even brown colour, with 6 Pearls and usual Reverse striking. An old purchase from the 1960's. Rare. *F/gFINE*

\$16000 - \$17000



452 1933. PCGS graded MS 63RB. Fresh bloom, the Obverse full mint red. *Ch.UNC*

\$325 - \$350

453 1935. Nearly full mint red with a few small spots. *Ch.UNC/GEM*

\$300 - \$350



454 1941 K.G. Fresh mint red bloom. *UNC*

\$450 - \$500



455 1946. Key date. Mint red and brown, with substantial lustre. Well struck, and a lovely example. Scarce. *UNC/Ch.UNC*

\$3700 - \$3800



456 1947Y. Brown and red mint bloom. A nice example for this date. Scarce. *UNC*

\$400 - \$450

Threepence

457 1910. Lovely old tone with mint bloom. *GEM UNC*

\$200 - \$220



458 1911. Light tone with mint bloom. *Ch.UNC/GEM*

\$800 - \$900



459 1912. Lovely original old tone with underlying mint bloom. One of the finest known of this tough date, and very scarce in this high grade. *Ch.UNC/GEM*

\$3250 - \$3500



465 1928. Deep old tone. *UNC/Ch.UNC*

\$280 - \$300



460 1915. Key date. Well struck with clear band and feathers, a superior example of this key date of the series. Rare. *Ch.UNC*

\$2500 - \$2600



466 1934. PCGS graded MS 67. The equal highest grade by PCGS of any Pre Decimal coin, with only a handful of dates in the George V issues in this grade, and the highest graded of this date. Brilliant mirror fields, fully and sharply struck up, and extremely rare as such in this amazing grade. *GEM UNC*

\$7000 - \$8000



461 1916. Full brilliant original mint bloom. Scarce date and attractive. Scarce. *Ch.UNC/GEM*

\$3200 - \$3300



467 1953. PCGS graded MS 65. Toned. *GEM UNC*

\$300 - \$325

462 1917. Toned with some bloom. *Ch.UNC*

\$250 - \$275



463 1918M. Fresh mint bloom with light tone. Attractive die cracks. *Ch.UNC*

\$600 - \$700

Sixpence



468 1910. PCGS graded MS 64. Old tone, and well struck. *Ch.UNC/GEM*

\$450 - \$500

464 1927. PCGS graded MS 64. Dark toned with bloom. *Ch.UNC/GEM*

\$280 - \$300



469 1911. PCGS graded AU 58. Dark toned, just a touch off UNC. *aU/UNC*

\$500 - \$550



473 1918M. PCGS graded MS 64. Light tone and mint bloom. Scarce. *Ch.UNC/GEM*

\$4800 - \$5000



470 1914. Old gunmetal tone. *Ch.UNC*

\$2000 - \$2200



474 1921. PCGS graded MS 65. Superb steel tone with a Cameo like Obverse and a sharp reverse. Underlying mint bloom, and with great eye appeal. Once again it comes with the magic PCGS numbers, with only 2 coins graded higher. *GEM UNC*

\$4000 - \$4500



471 1916. Full brilliant mint bloom with peripheral tone, and a sharp strike. Scarce. *Ch.UNC/GEM*

\$2600 - \$2800



475 1922. PCGS graded MS 64. Good striking for this tough date. Scarce. *Ch.UNC/GEM*

\$3000 - \$3250



472 1917M. PCGS graded MS 65. Superb old red and green underlying tone with mint bloom, and with sharply struck details throughout. Virtually impossible to improve on, and comes with the magic PCGS numbers, with no examples graded higher. *GEM UNC*

\$5500 - \$6000



476 1922. PCGS graded MS 64. Light reddish tone and a lovely well struck example of this date. Scarce. *Ch.UNC/GEM*

\$3000 - \$3250



477 1923. PCGS graded MS 63. Some bright mint bloom. *Ch.UNC*

\$2100 - \$2200



482 1953. Toned with mint bloom. *Ch.UNC*

\$400 - \$450

483 1953. Toned with some bloom. *Ch.UNC/GEM*

\$400 - \$450



478 1924. PCGS graded MS 64. Light tone with mint bloom, and sharply struck. Scarce. *Ch.UNC/GEM*

\$3400 - \$3500

Shilling



484 1910. Light tone with some subdued satiny bloom. *UNC*

\$380 - \$400



479 1926. Cameo prooflike Obverse with full mint bloom. *Ch.UNC/GEM*

\$450 - \$500



485 1916. Old tone with some bloom. Slightly mis-struck, with the Obverse offset by 45 degrees. *Ch.UNC/GEM*

\$550 - \$600

480 1927. Toned with mint bloom and some Obverse contact. *Ch.UNC*

\$350 - \$400



481 1935. Well struck with some mirror bloom. *Ch.UNC*

\$1700 - \$1800



486 1921S Star. Key date. PCGS graded AU 58. A good example of this tough date. Scarce. *aUNC*

\$1700 - \$1800



487 1921S Star. Key date. A problem free choice example (particularly on the Obverse) of this rare key date date coin. *UNC*

\$4000 - \$4500



492 1928. Steel grey tone. Scarce this nice. *Ch.UNC*

\$2800 - \$3000



488 1922. Nice peripherhal tone with mint bloom. Scarce. *Ch.UNC*

\$2200 - \$2400



493 1931. Fully struck up with light tone and bloom. *Ch.UNC/GEM*

\$600 - \$650



489 1925/3. Overdate. PCGS graded MS 63. Bloom. *Ch.UNC*

\$480 - \$500



494 1933. Key date. Scarce. *EF*

\$550 - \$600



490 1925/3. Overdate. PCGS graded MS 65. Full bright mint bloom. *GEM UNC*

\$1500 - \$1600



495 1933. Key date. Light tone. Scarce. *gEF/aUNC*

\$900 - \$1000



491 1927. Old tone with mint bloom. *UNC/Ch.UNC*

\$800 - \$900



496 1933. Key date. Subdued Mint lustre under light old tone. Superbly struck, with full feathers and sharp details. One of the finest known of this rare date. *Ch.UNC*

\$12000 - \$14000



497 1934. Light tone with some mirror bloom.
Ch.UNC/GEM

\$1200 - \$1400



501 1911. Light tone with a few edge knocks.
aEF

\$500 - \$550



498 1940. PCGS graded MS 62. Light tone.
Ch.UNC

\$600 - \$650



502 1911. Well struck example of this very tough early date. Some minor Reverse field and rim marks, but with sharp detail throughout. Scarce. UNC/Ch.UNC

\$6500 - \$7000

Florin



499 1910. Some peripheral toning with bloom.
aUNC

\$900 - \$1000



503 1913. Subdued Mint lustre with attractive old toning. Ex The Parkhill Collection. One of the finest known of this tough date. Ch.UNC

\$12000 - \$14000



500 1910. Light attractive tone with mint bloom. A great type coin with good eye appeal, well struck with only some minor contact marks in the fields. An ideal type coin. Scarce this nice. Ch.UNC/GEM

\$5250 - \$5500



504 1914H. Key date. Light tone. EF

\$1700 - \$1800



505 1917. Light tone with lustre. *aU/UNC*
\$425 - \$450



510 1924. Some light tone. *aUNC*
\$900 - \$1000



506 1917. Light tone and attractive. *Ch.UNC*
\$1500 - \$1600



511 1926. PCGS graded MS 61. Light tone.
UNC
\$800 - \$850



507 1919. Old red and green toning. *aUNC*
\$1200 - \$1400



512 1926. Some old tone with significant
bright mint bloom. Well struck for this
date, and scarce as such. Ex Draper hoard,
and one of the finest known. *Ch.UNC/
GEM*
\$3500 - \$3700



508 1919. Superb light salmon tone highlights
with full lustrous mint bloom. Fully struck
up, and with sharp details and beautiful
eye appeal for this tough date. One of the
finest known. Rare. *Ch.UNC/GEM*
\$11000 - \$12000



513 1931. PCGS graded MS 64. Mint bloom.
Ch.UNC/GEM
\$450 - \$500



509 1921. PCGS graded AU 55. Some bloom.
aUNC
\$700 - \$750



514 1932 Key date. 6 Pearls and full diamond.
Scarce. *VF*
\$900 - \$1000



515 1934/5 Melbourne Centenary. Slightly flat on wreath. *Ch.UNC*

\$600 - \$650



518 1934/5 Melbourne Centenary. Old deep tone with underlying lustre, and virtually as struck with nearly a full wreath and hand of rider. With somewhat worn Foy's bag. Scarce. *Ch.UNC/GEM*

\$1000 - \$1100

516 1934/5 Melbourne Centenary. With old tape stained Foy's bag. *Ch.UNC*

\$700 - \$750



519 1934. Light tone with mint lustre. *Ch.UNC*

\$1200 - \$1400



517 1934/5 Melbourne Centenary. PCGS graded MS 64. Soft old tone with virtually unmarked fields and a strong wreath. Scarce. *Ch.UNC/GEM*

\$700 - \$750



520 1936. Superb specimen-like tone with some bloom and good fields. *Ch.UNC/GEM*

\$425 - \$450



521 1939. Key date. A few Obverse contact marks as usual. *UNC*

\$1200 - \$1400

Postal / Online Bidders:

Postal / Fax bids finishes
5pm AEST Friday 11th April 2014.

Online postal bidding finishes at
12pm AEST Sunday 13th April!

Crown



522 1937. Toned, with underlying mint bloom. *Ch.UNC*

\$150 - \$175



523 1937. PCGS graded MS 64. Lovely old tone with nice eye appeal. *Ch.UNC/GEM*

\$250 - \$300



524 1938. Some mint bloom and good surfaces. *aUNC*

\$300 - \$350



525 1938. PCGS graded MS 62. Toned with some lustre. *UNC*

\$750 - \$800



526 Proof Halfpenny 1955P. Mint red, lovely matte finish. Ex Status Sale 282. Scarce. *FDC*

\$6700 - \$6800

527 Proof Halfpenny 1959M. PCGS graded PR 62RB. Some toning. *FDC*

\$240 - \$250

528 Proof Halfpenny 1960Y. PCGS graded PR 66 RD. A little tone. *FDC*

\$400 - \$450

529 Proof Halfpenny 1963Y. PCGS graded PR 66 RD. *FDC*

\$400 - \$450

530 Proof Penny 1955M. PCGS graded PR 64RD. *FDC*

\$650 - \$700



531 Proof Penny 1955Y. Mint red. Ex Status Sale 282. Scarce, and a superior example. *FDC*

\$6700 - \$6800

532 Proof Penny 1957Y. Red. Brilliant finish. *FDC*

\$800 - \$900

533 Proof Penny 1958Y. *FDC*
\$550 - \$600

534 Proof Penny 1959Y. Matte finish. Trace of very light tone. *FDC*
\$475 - \$500

535 Proof Halfpenny and Penny pair 1960Y. Light tone on Halfpenny. *FDC*
\$600 - \$700



536 Proof Penny and Halfpenny Pair 1960Y. The Halfpenny PCGS graded PR 66RD, the Penny NGC graded PF 65RD. *FDC*
\$1100 - \$1200

537 Proof Halfpenny and Penny Pair 1962Y. The Halfpenny NGC graded PF 65RD, the Penny PCGS PR 65RD. Light toning to the Halfpenny. *FDC*
\$700 - \$800

538 Proof Halfpenny and Penny Pair 1963Y. ANACS graded PF 68RED & PF 67RED respectively. Superior examples. *FDC*
\$1300 - \$1400

539 Proof Threepence 1961M. PCGS graded PR 66 RD. *FDC*
\$180 - \$200

540 Proof Shilling 1962M. NGC graded PF 66. *FDC*
\$225 - \$250

541 Proof Silver set of 3 1955M Threepence to Shilling. *FDC*
\$450 - \$500

542 Proof set of 5 1956M. Penny to Florin. Edge spot on Penny. *FDC*
\$850 - \$900

543 Proof Silver set of 4 1957M Threepence to Florin. Some minor light tone. *FDC*
\$600 - \$650



544 Proof set of 5 1958M. Penny to Florin. Superior grade set. *FDC*
\$1200 - \$1400

545 Proof Silver set of 4 1960M Threepence to Florin. Dark toned. *FDC*
\$270 - \$280

546 Proof Silver Set of 4 1961M. Threepence to Florin. PCGS graded PR 66, PR 65, PR 66 and PR 65. *FDC*
\$900 - \$1000

547 Proof Silver set of 4 1962M Threepence to Florin. With original black case of issue. *FDC*
\$280 - \$300

548 Proof Silver Set of 4 1962M. Threepence to Florin. PCGS graded PR 66, PR 65, PR 66 and PR 66. *FDC*
\$900 - \$1000

- 549 Proof Silver set of 4 1963M Threepence to Florin. With black case of issue. *FDC*
\$220 - \$240

Internment Camps

Unofficial Patterns, Restrikes & Forgeries



- 550 Port Phillip "Kangaroo Office" 1/2 Ounce Aluminium squeeze. A lead trial strike from the original Obverse die, believed to be struck by Stokes in the 1960's. An interesting item. Scarce. *aUNC*

\$1100 - \$1200



- 551 Proof Silver Goose Dollar 1967. Milled edge type. In original presentation box. Mostly even steely grey, red and blue tone. The box has some minor damage to inside silk. *FDC*

\$1600 - \$1700



- 552 Proof Silver Goose Dollar 1967. Plain edge type. NGC graded PF 66CAMEO. A superb example, and one of the finest known. *FDC*

\$1600 - \$1700



- 553 Liverpool, NSW German Internment Camp WW I Threepence. Type II, struck in aluminium. Bright mint bloom and as struck. Very rare this grade, the finest we have seen. *Ch.UNC*

\$5000 - \$5500



- 554 1914-16 WWI Liverpool NSW Internment Camp Circular Copper Token. Type 1. Very rare, and the rarest Internment Token issue, with 5 examples known. In superior grade. A unique opportunity to acquire a coin that is rarely offered, and the first time we have handled this issue. *Ch.UNC*

\$8500 - \$9000



- 555 Penny Internment Camps Token WWII. Golden bronze tone. *gEF/aUNC*

\$240 - \$260



556 Penny Internment Camp WW II. Bright mint lustre. Scarce. *Ch.UNC*

\$300 - \$350



561 Two Shillings Internment Camps Token WWII. Even brown. *gEF*

\$1100 - \$1200



557 Threepence Internment Camps Token WWII. Brown with hints of red. Camps over Camp variety. *UNC*

\$200 - \$220



558 Threepence Internment Camps Token WWII. Mint red and brown. *Ch.UNC*

\$240 - \$250



559 Shilling Internment Camps Token WWII. Some red. *aUNC*

\$440 - \$460



560 Shilling Internment Camp WW II. Mostly mint red. Scarce. *Ch.UNC*

\$750 - \$800

Australian Interesting Serial Numbered Banknotes

Five Dollar

562 2002 Polymer. DA 06 199999 & 200000. (R 220). Consecutive pair. Both one digit off having solid numbers. *UNC*

\$140 - \$150

563 2002 Polymer. HA 06 899999 & 900000. (R 220d). Consecutive pair. Both one digit off having solid numbers. *UNC*

\$140 - \$150

564 2007 Polymer. BM 07 399999 & 400000. (R 221a). Consecutive pair. Both one digit off having solid numbers. *UNC*

\$140 - \$150

Ten Dollar

565 1991. 2 sets of consecutive serial number run of 4 notes with 2 consecutive prefixes. Serials MNU, MNV 799993, 799994, 799995, 799996. (8 notes). *UNC*

\$180 - \$200

566 1991. 2 sets of consecutive serial number run of 4 notes with 2 consecutive prefixes. Serials MNX, MNY 799993, 799994, 799995, 799996. (8 notes). *UNC*

\$180 - \$200

567 1991. 2 sets of consecutive serial number run of 7 notes with 2 consecutive prefixes. Serials MPB, MPC 799990, 799991, 799992, 799993, 799994, 799995, 799996 (14 notes). *UNC*

\$300 - \$350

Australian Solid Serial Numbered Banknotes

Five Dollar

568 1995 polymer. Solid serials CC 95 111 111.
UNC

\$190 - \$200



569 1995 polymer. Solid serials CF/G 95 111 111. Consecutive prefix matching serial pair. *UNC*

\$380 - \$400

570 2006 polymer. Solid serials. AJ 06 333 333.
UNC

\$200 - \$220

571 2006 polymer. Solid serials CI 06 777 777.
UNC

\$190 - \$200

572 2006 polymer. Solid serials CK 06 777 777.
UNC

\$190 - \$200

573 2006 polymer. Solid serials DA 06 888 888.
Very popular 'lucky' number. *UNC*

\$190 - \$200



574 2006 polymer. Solid serials CL 06 777 777 and 888 888. Pair with very popular 'lucky' 8's number. *UNC*

\$400 - \$450

575 2007 polymer. Solid serials DF 07 222 222.
UNC

\$190 - \$200

576 2007 polymer. Solid serials BJ 07 444 444.
UNC

\$190 - \$200

577 2007 polymer. Solid serials BC/D 07 222 222. Consecutive prefix pair with matching solid serials. *UNC*



578 2007 polymer. Solid serials CF 07 222222/3333333/444444/555555. Run of four with consecutive solid numbers and matching prefixes. *UNC*

\$800 - \$900



579 2007 & 2008 polymer. Solid serials CH 07/08 333 333. Matching solid serial pair with consecutive prefixes. A rare combination. *UNC*

\$400 - \$450

580 2008 polymer. Solid serials EA 08 333 333.
UNC

\$190 - \$200



581 2008 polymer. Solid serials CA/B 08 333 333. Matching solid serial pair with consecutive prefixes. *UNC*

\$400 - \$450

582 2007 polymer. Solid serials. HK 07 666 666.
UNC

\$200 - \$220



583 2007 polymer. Solid serials. GC 07/GD 07 666 666. Matching solid serial pair with consecutive prefixes. *UNC*
\$400 - \$440

Ten Dollar



584 2008 polymer. Solid serials FA 08 777 777 and FA 08 777 778. (With following consecutive 7 digit radar note). A rare combination that can only occur once in a print run of a million sheets. *UNC*
\$380 - \$400

Twenty Dollar

585 2009 polymer. Solid serials ND 09 777 777. *UNC*
\$240 - \$260

Fifty Dollar



586 2009 polymer. Solid serials OD/E 09 777 777. Matching solid serial pair with consecutive prefixes. *UNC*
\$500 - \$550

Radar Serial Numbered Notes

Ten Dollar

587 1991. Radar note Serial MJN 052250. *UNC*
\$30 - \$40

588 1991. Radar note Serial MJP 052250. *UNC*
\$30 - \$40

589 1991. Radar note with matching serial numbers, and consecutive prefix numbered pair. Serials MHU & MHV 634436. (2 notes). *UNC*
\$100 - \$120

590 1991. Radar note with matching serial numbers, and consecutive prefix numbered pair. Serials MJK & MJL 052250. (2 notes). *UNC*
\$100 - \$120

591 1991. Radar note with matching serial numbers, and consecutive prefix numbered pair. Serials MJS & MJT 591195. (2 notes). *UNC*
\$100 - \$120

592 1991. Radar note with matching serial numbers, and consecutive prefix numbered pair. Serials MJU & MJV 591195. (2 notes). *UNC*
\$100 - \$120

Australian Decimal Banknotes

Two Dollar

593 1976 Knight-Wheeler OCR-B centre thread (R 86b). Consecutive pair. *UNC*
\$110 - \$120

594 1976 Knight-Wheeler OCR-B side thread (R 86c). Consecutive pair. *UNC*
\$80 - \$90

595 1979 Knight-Stone (R 87). Bundle of 100. With original clear bundle wrapper. *UNC*
\$750 - \$850

Five Dollar



- 596 1995. Fraser-Evans (R 217ai). Narrow orientation bands. Bundle of 100 notes. Scarce as a bundle with a very high catalogue value. *UNC*

\$2000 - \$2200

Ten Dollar

- 597 1967 Coombs-Randall (R 302). *aUNC*
\$170 - \$180

- 598 1974 Phillips-Wheeler Australia (R 305). Consecutive pair. Light hint of a bend. *aU/UNC*
\$160 - \$180

- 599 1979 Knight-Stone Gothic (R 307a). Consecutive pair. *UNC*
\$140 - \$150

- 600 1979 Knight-Stone OCR-B (R 307b). Consecutive pair. *UNC*
\$140 - \$150

- 601 1994 Fraser-Evans (R 316b). Blue shading of Dobell type. *UNC*
\$100 - \$110

- 602 1994 Fraser-Evans (R 316b). Blue shading of Dobell type. Consecutive pair. *UNC*
\$200 - \$220

- 603 1994 Fraser-Evans (R 316b). Blue shading of Dobell type. Consecutive run of 4. *UNC*
\$500 - \$550

- 604 2002 polymer MacFarlane-Henry AA02 (R 320a) first signature prefix. Also with AA03 (R 320b) and AA06 (R 320c). (3 notes total). *UNC*
\$80 - \$90

Twenty Dollar



- 605 1967 Coombs-Randall (R 402F). First prefix XBQ. *aUNC*
\$2200 - \$2400

- 606 1976 Knight-Wheeler centre and side thread (R 406a, 406b). (2 notes total). *UNC*
\$140 - \$150

- 607 1976 Knight-Wheeler side thread (R 406b). Consecutive pair. *UNC*
\$180 - \$200

- 608 1976 Knight-Wheeler side thread (R 406b). Consecutive pair. *UNC*
\$180 - \$200

- 609 1979 Knight-Stone Gothic (R 407a). Consecutive pair. *UNC*
\$220 - \$240

- 610 1979 Knight-Stone OCR-B (R 407b). Consecutive pair. *UNC*
\$280 - \$300

Fifty Dollar

- 611 1985 Johnston-Fraser OCR-B (R 509b). Consecutive pair. *UNC*
\$380 - \$400

- 612 1989 Phillips-Fraser (R 511). Consecutive pair. *UNC*
\$160 - \$180

- 613 1995 polymer Fraser-Evans (R 516a). First year of issue. Consecutive pair. *UNC*
\$180 - \$200

- 614 1996 polymer Fraser-Evans (R 516b). Key year issue. *UNC*
\$300 - \$350

- 615 1997 polymer MacFarlane-Evans (R 517a).
First signature year issue. *UNC*
\$200 - \$220
- 616 1998 polymer MacFarlane-Evans (R 517b).
Consecutive pair. *UNC*
\$200 - \$220
- 617 1999 polymer MacFarlane-Evans (R 517c).
Consecutive pair. *UNC*
\$150 - \$160

One Hundred Dollar

- 618 1996 polymer Fraser-Evans (R 616). First
signature issue. *UNC*
\$130 - \$140
- 619 1996 polymer Fraser-Evans (R 616). First
signature issue. Consecutive pair. *UNC*
\$300 - \$330
- 620 1998 polymer MacFarlane-Evans (R 618a).
First signature issue. Consecutive pair.
UNC
\$260 - \$280
- 621 1999 polymer MacFarlane-Evans (R 618b).
UNC
\$150 - \$170

Mistruck Error Coins

Halfpenny

- 622 195- QE II. Weakly struck with virtually no
lettering or date visible. *VF*
\$80 - \$100

Penny



- 623 1941 K.G. Struck well off centre 4mm, and
outside of collar. A scarce date for a mis-
strike, and attractive brown colour. *UNC*
\$400 - \$450
- 624 1948Y, 1950Y. Both struck off centre, with
small 2-3mm raised rim lips. *aEF*
\$110 - \$120
- 625 1949 and 1964. Small raised rim lips. (2
coins). *VF-EF*
\$60 - \$80
- 626 1962Y. Double 'Nose' of Queen on Obverse
variety. Mint red with considerable bloom.
Scarce in this grade. *UNC*
\$140 - \$150



- 627 19-- QE II. Evidence of a double strike,
with partial Reverse Brockage. Scarce.
aUNC
\$500 - \$550



- 628 19-- QE II. Large rim lip on Obverse (11
mm). Scarce with this large a lip, with
more than 30% of the coin off centre.
aUNC
\$500 - \$550

Threepence

629 1944S, 1948. Both struck off centre, with 2mm+ raised rim lips. *aVF/gVF*
\$80 - \$90



630 1951PL. Partial collar error resulting in a larger flat rim. Some mint lustre and a scratch probably from striking. A scarce Royal Mint, London error coin. *aUNC*
\$140 - \$150

635 1950. Double struck on Obverse, with 2nd strike 10% off centre, showing part legend and part date. PCGS graded AU55. Scarce. *aUNC*
\$600 - \$700

636 1954. Struck off centre, with large 2mm+ raised rim lip. *EF*
\$90 - \$100



631 1952. Struck off centre, with 3mm raised step rim on Obverse. *Ch.UNC*
\$200 - \$250



637 195- (KGV). Struck 25% off centre, with large raised rim lip on Reverse. PCGS graded MS 64. *Ch.UNC*
\$800 - \$900



632 1953. Large 4mm raised rim lip on Obverse. *Ch.UNC*
\$240 - \$250

638 1960 and 1963. Small off centre and raised rim lips. (2 coins). *VF-EF*
\$60 - \$80

633 1962, 1963, 1964. All struck off centre, with small 2-3mm raised rim lips. Lovely high grade examples. *Ch.UNC*
\$170 - \$180

Shilling

Sixpence



639 1954. Raised rim lip on Reverse. *Ch.UNC*
\$240 - \$240



634 1950. Mistruck collar error, on large, spread flan. *Ch.UNC*
\$500 - \$550

Postal Bidders:

Bids for this sale can be submitted by:
Email, Fax, Online Forms or via our
Live Online Bidding with a valid account

www.iagauctions.com

Florin



- 640 1954. Raised rim lip with the edge sheared on Reverse. *Ch.UNC*

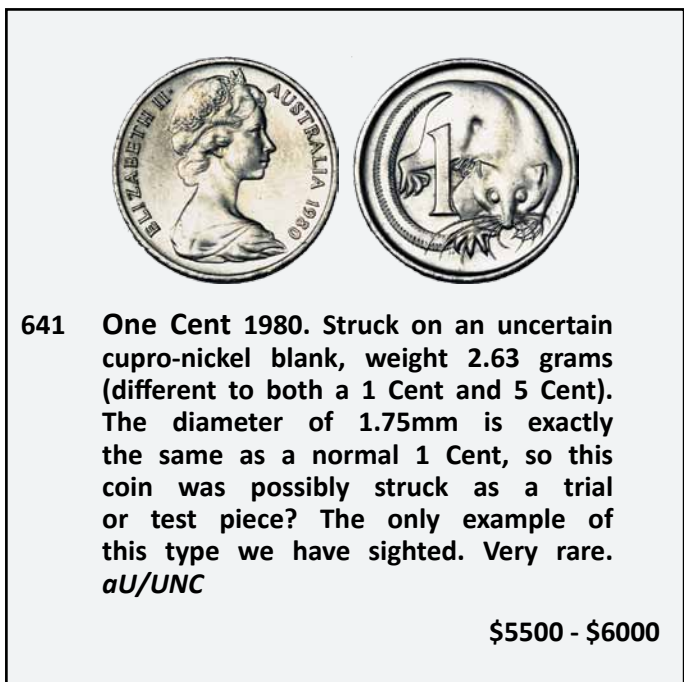
\$280 - \$300

Five Cent



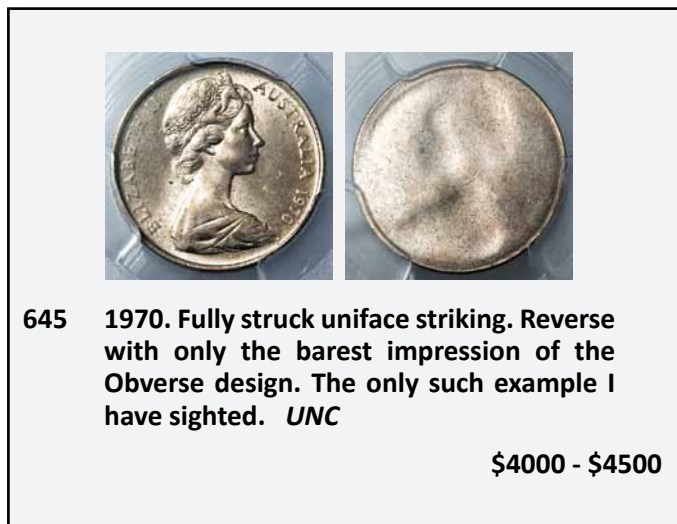
- 644 1969. Completely struck through on Reverse, with the appearance of a split planchet, but a full weight and size coin (2.8gms). PCGS graded MS 66. Very rare, if not unique as such. *UNC*

\$1100 - \$1200



- 641 One Cent 1980. Struck on an uncertain cupro-nickel blank, weight 2.63 grams (different to both a 1 Cent and 5 Cent). The diameter of 1.75mm is exactly the same as a normal 1 Cent, so this coin was possibly struck as a trial or test piece? The only example of this type we have sighted. Very rare. *aU/UNC*

\$5500 - \$6000



- 645 1970. Fully struck uniface striking. Reverse with only the barest impression of the Obverse design. The only such example I have sighted. *UNC*

\$4000 - \$4500

Two Cent



- 642 1971. Struck on an uncertain thin or underweight and undersized blank approximately half the normal thickness. With normal 2 Cent for comparison. As struck. *UNC*

\$1400 - \$1500



- 646 1983. Full Obverse Brockage. Lovely early strike. PCGS graded AU55. *gEF/aUNC*

\$3500 - \$3700

- 643 1981. Indented rim partial collar error. The coin has a partially stepped out rim where the previous coin had clipped the rim before full ejection. Mint red. *UNC*

\$180 - \$200

- 647 1999 and 10 Cent 2002. Small off centre and raised rim lips. (2 coins). *aU/UNC*

\$80 - \$100



648 2000? Struck off-centre 4mm rim lip.
UNC
\$225 - \$250

649 2003, 10 Cent 2003. Both struck off centre,
the 5 Cent by 4mm, the 10 Cent by 1+mm
and slightly raised rim lips. *aVF/gVF*
\$180 - \$200



653 N/D (2000-2006). Struck 95% off-centre,
resulting in an almost blank planchet,
except for a small lip off to the side. PCGS
graded MS 62. *UNC*

\$900 - \$1100

650 N/D. 1st strike full Reverse brockage.
With shallow raised rim around entire
circumference of Reverse. PCGS graded
MS 66. A superior example to the coin
we sold in the last sale for \$8,287, and
extremely rare. *UNC*
\$4000 - \$4500



654 N/D. Massively off-struck, with less than
10% of the original coin design still visible,
and creating a large protrusion on the
edge. Rare and interesting. *aUNC*

\$1400 - \$1500

One Dollar



655 2001 Centenary of Federation. Die
rotation by 180 degrees (the Obverse QE
II portrait rotated more than 90 degrees
to the right). Rare in this condition.
Ch.UNC/GEM

\$350 - \$400

Ten Cent

651 N/D Blank planchet. Also 20 Cent and 50
Cent. (3 coins). *EF-aUNC*
\$100 - \$120

Twenty Cent

652 1981. Canadian Mint 3 1/2 claw variety.
PCGS graded MS 64 and MS 65 (2 coins).
ChUNC-GEM
\$140 - \$150

Postal Sale 4:
Online only, mid June 2014
www.iagauctions.com

Two Dollar



- 656 2009. Double struck on both sides. Approximately one third of the coin double struck on edge, the second impression off set to the host coin. Superb error and rare. *UNC*

\$1100 - \$1200

World Banknotes

Ten Pound



- 657 Reserve Bank of New Zealand Ten Pounds Wilson (1955-56). Small spot, minor bends and flicks. *aUNC*

\$550 - \$600



- 658 Reserve Bank of New Zealand Ten Pounds Wilson (1955-56). Small spot, trace of centre bend, a little dirty. *aUNC*

\$550 - \$600

Ancient Coins



- 659 Egypt Ptolemy III Euergetes Gold Octadrachm 246-222 B.C. (S.7825, SNG Cop.196) Alexandria mint, commemorative issue struck under Ptolemy IV 221-205 B.C. Obv. radiate diadem bust of Ptolemy III wearing aegis with trident, Rev. radiate and filleted cornucopiae. Well centred with a superb portrait. With some underlying mint bloom. Very rare and superb. *aEF*

\$19000 - \$20000



- 660 Roman Empire AV Aureus Antoninus Pius. 138-161 AD (S. 4027 RIC. 256b). Emperor standing left holding globe. Trace of minor edge mount? Nice portrait and rare. *gVF/aEF*

\$3400 - \$3500



- 661 Roman Empire AE Sestertius Marcus Aurelius. 161-180 AD (S. 4962). M. Aurelius and Lucius Verus clasping hands. Lovely green patina, and well struck with minimal wear, virtually as struck. Rare as such. *gEF*

\$2000 - \$2200

Medals & Medallions



- 662 Captain James Cook Royal Society memorial Medal struck in bronze 43.3mm. 1784 by L. Pingo. NGC graded MEDAL MS 65BN. Rich brown colour, rare this nice virtually as struck. *Ch.UNC/GEM*

\$3400 - \$3500



- 663 Cessation Of Transport (of convicts) 1853. Struck in bronze (58mm) by the Royal Mint, London. Very light wear on high points else as struck. Rare in this metal, with approximately only 100 made. *aUNC*

\$1400 - \$1500



- 664 Products of New South Wales, prize medal Sydney 1854. Struck in silver (72mm) by L.C. Wyon, and struck at the Royal Mint, London. In original presentation case of issue, in good condition. Lovely old blue and red gunmetal tone. Very rare. *aUNC*

\$4500 - \$5000



- 665 HMAS Sydney, SMS Emden Medal. WW I, 1914 by W.Kerr. Presented to the officers from the HMAS Sydney for the sinking of the SMS Emden. Struck on a Mexican 8 Reales 18946. Small edge chip and chop mark on Obverse. A nice example. Scarce. *gVF*

\$2800 - \$3000

- 666 Territory of New Guinea. Luluai badge, in bronze, officially holed three times by Amor, Sydney. Mint red, slight tone stain. *UNC*

\$120 - \$140

- 667 Territory of New Guinea. Tul-Tul badge, in bronze, officially holed three times by Amor, Sydney. Mint red. *UNC*

\$120 - \$140

Miscellaneous Australian Banknotes

Ten Shilling

- 668 1934 Riddle-Sheehan (R 10). Worn, large edge tears. *GOOD-VG*

\$40 - \$50

- 669 1952 Coombs-Wilson (R 15). *EF*

\$180 - \$200

One Pound

- 670 1927 Riddle-Heathershaw (R 26). *gVF*

\$270 - \$280

- 671 1927 Riddle-Heathershaw (R 26). 4 light folds. *aEF*

\$380 - \$400

- 672 1933 Riddle-Sheehan (R 28). *FINE*
\$160 - \$180
- 673 1933 Riddle-Sheehan (R 28). *gVF*
\$300 - \$350
- 674 1952 Coombs-Wilson (R 32). Crisp with original sheen. *aUNC*
\$200 - \$250
- 675 1953 Coombs-Wilson Commonwealth (R 33). Fresh and crisp. *UNC*
\$140 - \$150

Five Pound

- 676 1927 Riddle-Heathershaw (R 42). Worn, edge tears. *VG-aFINE*
\$280 - \$300
- 677 1954 Coombs-Wilson Commonwealth (R 49). Fresh. *aUNC*
\$250 - \$270
- 678 1960 Coombs-Wilson (R 50). *aUNC*
\$150 - \$175

One Dollar

- 679 1967. Coombs-Randall (R 72). *aUNC*
\$100 - \$120

Two Dollar

- 680 1966. Coombs-Wilson (R 81). Consecutive pair. *aUNC*
\$30 - \$40

Assorted

- 681 Small collection of paper and polymer notes, \$1 to \$50. Mostly well circulated. \$234 FV. (23 notes total). *POOR-UNC*
\$280 - \$300

- 682 Ten Shillings 1961 Coombs-Wilson (R 17). Also 1 Pound Sheehan-McFarlane (R 29) and 1 Pound 1942 Armitage-McFarlane (R 30a). Also USA Bicentennial Penny 1976, with official 'countermarks'. On card (slightly damaged/folded).(4 items total). *VG-VF*
\$130 - \$140

Miscellaneous Australian Coins

Halfpenny

- 683 1941, 1942, 1943. Some red. (3 coins). *gEF-UNC*
\$60 - \$70



- 684 1946Y, 1947Y, 1948, 1948Y, 1949Y, 1950Y, 1951, 1951Y, 1951PL. Mint red. (9 coins total). *UNC*
\$280 - \$300
- 685 1948 (2), 1951 (4) & 1959 (4). Some mint red. (10 coins). *VF-UNC*
\$40 - \$50
- 686 1953A, 1954Y, 1955, 1959, 1960Y, 1961Y, 1962Y, 1963Y, 1964Y. Mostly mint red. (9 coins total). *UNC-Ch.UNC*
\$80 - \$90
- 687 1959. Full mint red. (5 coins). *Ch.UNC/GEM*
\$80 - \$100
- 688 Set in Dansco album 1911-1964 (no 1923). Some coins cleaned. *GOOD-UNC*
\$80 - \$100

Penny

- 689 1927, Indian and London die varieties. (2 coins total). Brown. *FINE*
\$90 - \$100
- 690 1931. Dropped 1 Variety. (2 coins). *aVF*
\$30 - \$40
- 691 1936, 1938. Some red. (2 coins). *aUNC*
\$40 - \$50
- 692 1940 K.G, 1941 K.G. (2 coins). *VF*
\$30 - \$40
- 693 1946. Key date. (5 coins). *F-VF*
\$110 - \$120
- 694 1948, 1949, 1950, 1951, 1952, 1952A. Full mint red bloom. (6 coins total). *UNC-Ch.UNC*
\$240 - \$260
- 695 1951 (5), 1952 (6), 1953, 1958 (4), & 1959 (4). (20 coins). *VF-UNC*
\$110 - \$120



- 696 **1953, 1953A, 1955, 1955Y, 1956, 1956Y, 1957Y, 1958, 1958Y, 1959, 1959Y, 1960Y, 1961Y, 1962Y, 1963Y, 1964, 1964Y.** Mint red and brown to full mint red. (17 coins total). *UNC-Ch.UNC*
\$350 - \$400
- 697 1959 (6), 1960 (4), 1961 (5), 1962 (7), 1963 (6) & 1964 (3). Many with mint red. (31 coins). *EF-UNC*
\$80 - \$100
- 698 Incomplete set in Dansco album 1911-1964. Missing a 50% of dates including all key dates. *GOOD-UNC*
\$40 - \$50

Threepence

- 699 1938, 1939, 1940, 1941, 1942D, 1943, 1943D, 1944S, 1948, 1949, 1950, 1951, 1951PL, 1952. Mint bloom. (16 coins total). *UNC-Ch.UNC*
\$340 - \$350
- 700 1953-1964 inclusive. (12 coins total). *UNC-Ch.UNC*
\$220 - \$240

Sixpence

- 701 1912, 1914, 1917, 1921. Cleaned. (4 coins). *aVF-gVF*
\$160 - \$180
- 702 1924, 1926, 1927, 1936. Cleaned. (4 coins). *gFINE-gVF*
\$40 - \$50
- 703 1936. Some with lustre. (4 coins). *gEF-aUNC*
\$100 - \$120
- 704 1942S, 1942D, 1943S, 1944S, 1945. (5 coins total). *UNC-Ch.UNC*
\$170 - \$180
- 705 1950, 1951PL. Fresh mint bloom. (2 coins total). *Ch.UNC/GEM*
\$90 - \$100



- 706 **1953-1963 inclusive. Some nice coins including a Ch.UNC 1953.** (11 coins total). *UNC-GEM UNC*
\$525 - \$550
- 707 1954, 1955, 1957, 1958, 1959, 1960, 1961, 1962, 1963. Mostly with mint bloom. (9 coins total). *Ch.UNC-GEM*
\$220 - \$240

708 Set 1910-1963. Includes a few duplicates, and a few slightly better coins. (54 coins). *Good-UNC*
\$180 - \$200

709 Set 1910-1963. Includes a few duplicates, and some slightly better coins. (54 coins). *Good-UNC*
\$200 - \$220



710 Set 1910-1963. Includes a few duplicates, and some better coins, with some of the George V in F-VF grade. (55 coins). *Good-UNC*
\$240 - \$250

Shilling

711 1912, 1915H, 1921 Star (2), 1925, 1928 (2), 1933, 1934, 1935, 1940, 1944. (12 coins). *VG*
\$100 - \$120

712 1933. Key date. (3 coins). *VG*
\$180 - \$200

713 1950, 1952 (Very light tone). (2 coins total). *Ch.UNC*
\$110 - \$120

714 1953, 1954. (2 coins total). *Ch.UNC*
\$80 - \$90

715 1953-1963 inclusive. Some with light tone and bloom. (11 coins total). *UNC-Ch.UNC*
\$280 - \$300

716 1955, 1957, 1958, 1959, 1960, 1961, 1962, 1963. Mint bloom. (8 coins total). *Ch.UNC-GEM*
\$220 - \$240

717 Set 1910-1963. In blue Whitman albums. Mostly very worn. *POOR-FINE*
\$110 - \$120

718 Large bag of 250 pre Shillings, average circulated. Assorted dates, all unsorted coins, appears to be mostly George VI. *POOR-FINE*
\$750 - \$800

719 Large bag of 250 pre Shillings, average circulated. Assorted dates, all unsorted coins, appears to be mostly George VI. *POOR-FINE*
\$750 - \$800

720 Large bag of 250 pre Shillings, average circulated. Assorted dates, all unsorted coins, appears to be mostly George VI. *POOR-FINE*
\$750 - \$800



721 Large bag of 250 pre Shillings, average circulated. Assorted dates, all unsorted coins, appears to be mostly George VI. *POOR-FINE*
\$750 - \$800

Florin

722 1918, 1919, 1931, 1934 (2), 1935, 1936 (2), 1943, 1951, 1953, 1960. A few better coins. (12 coins). *FINE-UNC*
\$120 - \$140

723 1927 Canberra, 1954 Royal Visit. Some toning. (2 coins). *EF-UNC*
\$40 - \$50

724 1927 Canberra. Mostly average circulated, with a few better coins. (45 Coins). *F-gVF*
\$425 - \$450



725 1927 Canberra. Mostly average circulated, with a few better coins. (50 Coins). F-gVF
\$450 - \$500

726 1936. *aU/UNC*
 \$60 - \$70

727 1944, 1944S. Mint bloom. (2 coins total).
Ch.UNC
 \$130 - \$140

728 1946, 1947. Mint bloom. (2 coins total).
Ch.UNC
 \$110 - \$120

729 1946 (20 coins total). All ex mint roll.
UNC-Ch.UNC
 \$360 - \$380

730 1947 (20 coins total). All ex mint roll.
UNC-Ch.UNC
 \$360 - \$380

731 1951 Jubilee, 1954 Royal Visit. (2 coins total). *Ch.UNC*
 \$80 - \$90



732 1953, 1954, 1954 RV, 1956, 1957, 1958, 1959, 1960, 1961, 1962, 1963. Mint bloom. (11 coins total). UNC-Ch.UNC
\$400 - \$420

733 1957, 1958, 1959, 1960, 1961, 1962, 1963. Mint bloom. (7 coins total). *Ch.UNC-GEM*
 \$140 - \$150

734 1960 (20 coins total). All ex mint roll.
Ch.UNC
 \$200 - \$220

735 1961 (20 coins total). All ex mint roll.
Ch.UNC
 \$350 - \$380

736 Partial George VI set 1939-1952. The 1939 is *aVF*, some better grades. (11 coins total).
aVF-aUNC
 \$110 - \$120

737 Set 1910 - 1963 In Dansco album (No 1934/5 but includes 1932). Slightly above average set.
 \$400 - \$450

Crown

738 1937. A few better grades. (15 coins).
aVF-gVF
 \$325 - \$350

739 1937. A few better grades. (15 coins).
aVF-gVF
 \$325 - \$350

Twenty Cent

740 1968. PCGS graded MS 65. Scarce. (2 coins). *GEM UNC*
 \$110 - \$120

Sets/Albums

741 1910. Threepence to Florin. *aVF-aEF*
 \$160 - \$180

Assorted

742 Small lot of assorted predecimal silver coins. Contains Halfpenny 1922, Threepence 1960, 1964, Sixpence 1962 (2), Shilling 1960, 1961 (2), 1962, Florin 1960. (10 coins total). *aEF-UNC*
 \$50 - \$60

Royal Australian Mint Products

- 743 RAM 1966 Mint set. 1 and 2 Cent on card. Nice condition. \$30 - \$40
- 744 RAM 1966 Mint set. Full set 1 Cent to 50 Cent on card. Nice condition. \$50 - \$60
- 745 Endangered Species series 1oz Silver Proofs. 2007 Great White Shark, 2008 Blue-ringed Octopus, 2009 Saltwater Crocodile. (3 items total). *FDC* \$120 - \$140
- 746 Kangaroo at Sunset series \$1 1oz Silver coin. 2009 'F12' Privy mark, 2011 'F15' Privy mark (2). (3 items total). *FDC* \$120 - \$140

Miscellaneous & Unreserved Lots

- 747 Australia Post issued Beijing Olympics 50 Cent coin and stamp set 2008. Silver with proof-like finish. Limited edition, issue no 187/8000. *FDC* \$50 - \$60



- 748 Australia Post issued Beijing Olympics coin and stamp set 2008. Silver with proof-like finish. Limited edition of 8000. (3 sets total, each with consecutive issue numbers). *FDC* \$140 - \$160
- 749 One Dollar mint rolls 2000. (7 rolls total). Good condition. *UNC* \$220 - \$240

- 750 62 Assorted New Zealand Sixpences 1933-1965. Includes some duplicates, and many better coins. (64 coins). *VF-UNC* \$70 - \$80
- 751 Engraved Love Token, on GB Florin Victoria (N/D). Worn on Obverse, with brooch and solder marks, the reverse attractively patterned with an 'M'. *Vg-FINE* \$15 - \$20
- 752 Album of assorted USA, Canada and New Foundland minors. Includes a number of silver Half Dollars. (101 coins). *GOOD-EF* \$140 - \$150
- 753 USA One Dollar note 1957. *UNC* \$8 - \$10
- 754 PNG Shilling 1938. PCGS graded MS 64. *Ch.UNC/GEM* \$10 - \$15
- 755 PNG Shilling 1938. PCGS graded MS 66. *Ch.UNC/GEM* \$20 - \$25
- 756 USA Silver \$1 1881. NNC graded MS 66. Bright bloom. *Ch.UNC/GEM* \$40 - \$50
- 757 USA Silver \$1 18850. NNC graded MS 67. Toned. *Ch.UNC/GEM* \$40 - \$50
- 758 USA Silver \$1 1886. NNC graded MS 66PL. Bright bloom. *Ch.UNC/GEM* \$40 - \$50
- 759 USA Silver \$1 1886. NNC graded MS 67. Toned. *Ch.UNC/GEM* \$40 - \$50



- 760 USA Silver Dollars 18820, 18830, 1889, 1922, Half Dollars 1941S (2), 1942s, Canada Dollar 1963. (8 coins). *FINE-EF* \$110 - \$120

Room bidders please wait to collect lots until after the end of session 2 has finished to collect. We will endeavor to get you underway as quickly as possible. Lots can also be collected at our offices during the following week. Postal bidders please allow us until Monday the 14th to sort and finalise all postal sales and to post the prices realized on the website.

Prices realised will be posted on the website by late Monday 14th April once the large number of postal bids has been fully finalised and checked. All auction catalogue subscribers will then have the prices realized posted to them by the 16th, and should receive them later in the week. Passed in lots will be available for sale Online until Friday 25th April. All remaining lots unsold after this will then be withdrawn from sale.

The next Live Auction, Sale 80, will be in **September 2014**.

Keep an eye out also for our upcoming Online only Postal Sale (Postal Sale 4) coming in June 2014! Sign up online now to receive online email notifications and to gain access to view lots and to bid online. Please see the website for further information and details, or contact us.

We will be accepting lots for consignment for Sale 80 and Postal Sale 4 from Mid April 2014 onwards, until the sales are fully finalised. Please contact us now to discuss the submission of lots.

For any more information please call our office on:
Ph: (07) 55 380 300 - or Fax: (07) 55 387 296

Alternately you can Email us at:

mail@iaguctions.com

Download the Prices Realised and view unsold lots after the sale from our Website:

www.iaguctions.com



LOT 164



LOT 213



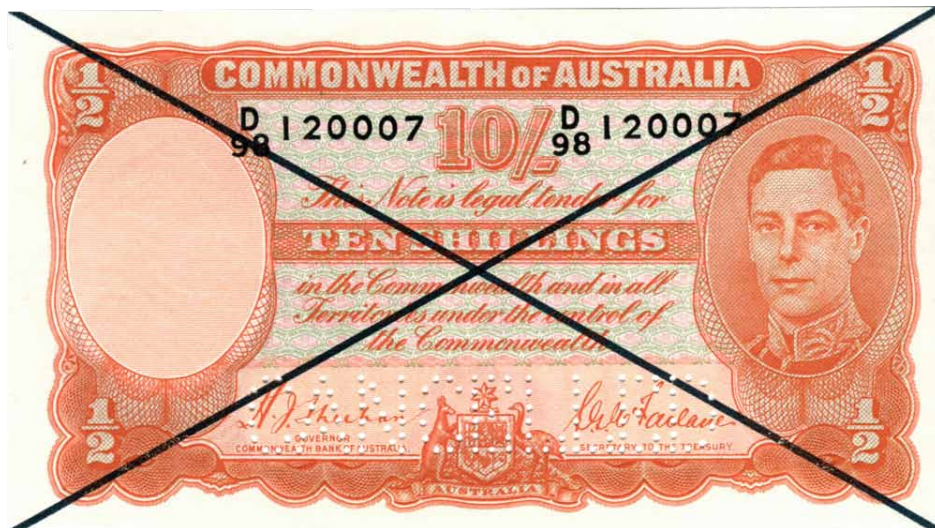
LOT 253



LOT 165



LOT 227



LOT 287



LOT 307



LOT 309



LOT 341



LOT 343



LOT 415



LOT 418



LOT 451



LOT 496



LOT 531



LOT 554



Terms And Conditions of Sale

Please read the following "Terms of Sale" carefully. These terms are applicable to all floor bidders and mail bidders in this auction. Your submission of bids in this Auction constitutes your acceptance of these "Terms of Sale".

1. This is a public auction sale, NOT an approval sale. At the fall of the gavel or auctioneer's call of "Sold", all sales are then final, and any bid acknowledged and relied on by the auctioneer shall not be withdrawn. Bidding in this auction in any way confirms that the bidder personally guarantees all payments, and acknowledges and accepts the Terms and Conditions of sale as set out herein. The auctioneer has final discretion in all such matters. In case of a dispute, the lot(s) in question may be immediately resold. The auctioneer as represented here includes International Auction Galleries as an entity.

2. Payments must be made in full and all floor bidder purchases must be removed the day of the sale, or by 5p.m. the next day. Absolutely No lots will be released until payment in full has been made. Payment may be made in Cash, by Personal Cheques (with proper identification, at the discretion of International Auction Galleries), or by Bank Transfer or Major Credit Cards as stipulated. Successful postal bidders will be notified by mail via an auction receipt. All postal bidder accounts must be fully finalised within 14 days of the sale date.

3. A 19.25% buyer's premium will be added to the knock down price of each lot (includes GST where applicable). **All payments by American Express will incur a 3% surcharge.**

4. Unless otherwise specifically stated by the auctioneer, each new bid shall be raised above the previous bid by such amount as is determined by the auctioneer during the course of the auction, and no party shall be allowed to retract his or her bid after acknowledgment by the auctioneer.

5. The auctioneer reserves the right to refuse any bid and to withdraw any goods from sale at any time, or to disclose any reserves or vendor information, without having to state any reason.

6. At the fall of the hammer, (if required by the Auctioneer), the purchaser shall give his or her full name and address, and pay 25% of the purchase price deposit. In default, the lot(s) purchased may, at the auctioneer's discretion, immediately be reoffered and resold. All lots sold will remain the property of the owner/vendor until cleared payment is made in full. Only then will the title of ownership of the lots pass to the purchaser, irrespective of any terms or deferment of payment.

7. Except as otherwise provided by state or federal law, no condition or warranty is given or implied by the auctioneer in respect of any lot offered for sale via auction. As all lots are given for inspection prior to the commencement of the sale, it shall be presumed that the goods have been inspected and that the purchaser accepts the goods are sold with all faults. No error or mis-description of any lot shall give cause for an invalidation of sale or an abatement of price, and the auctioneer shall not be held responsible for any such error. All lots are guaranteed genuine (except where so described), however if a lot sold is found to be a fake or forgery, the purchaser may then return it, and receive, upon proven confirmation to the auctioneers satisfaction, a full refund.

8. The auctioneer shall not be liable for any description or mis-description given on any of the goods presented here for sale in any way. Any statement as to the description of goods is given as a statement of opinion only as represented to the auctioneer, and is not to be relied on as a representation of fact. Whilst every effort is made, the auctioneer gives no warranty that the quantities or any grading given with respect to the description of any lot as stated is correct. All

images used are given as a guide only, and are not guaranteed to be an accurate representation.

9. No lots purchased by a bidder may be returned, including those lots where the bidder is acting as agent for another. There are no returns or refunds except for reason of lack of authenticity (as is stated in clause 7 and 8 above detailing liability). It is assumed that all intending bidders (including all postal and internet bidders) have obtained their own satisfaction and/or done due diligence on all lots before submitting any bids in any way. All bids submitted are thus then subject to the full terms and conditions. The auctioneer accepts no responsibility for any mistakes in any postal or phone bidding conducted. Late remittance of payments constitutes just cause for revocation of all return privileges. In the event that a bidder is acting as an agent for another party, and that agency has not been disclosed to the auctioneer in writing 24 hours before the sale date, then the bidder is deemed by the auctioneer to be the final buyer in all respects, and is fully responsible for all payments, fees and charges. **In no event may any lot(s) be returned after Twenty One (21) days from the date of the auction. All sales are then final.**

10. If any purchaser fails to comply with any of conditions of sale as outlined here or if any monies paid in any way given on settlement of account for any goods is dishonoured or unfulfilled, then any monies which the purchaser has paid to the auctioneer on account of the purchase shall then be forfeited absolutely to the vendor. The auctioneer acting as agent for the vendor is at liberty to re-sell the lot(s) in any manner and upon such terms and conditions as they may deem proper and/or to then sue the purchaser for any loss or resulting damages as set out below. Damages include all losses and expenses incurred by the vendor or the auctioneer as well as all damages which the vendor or the auctioneer may sustain resulting from any re-sale and storage, which shall then be recovered from the purchaser as liquidated damages. The auctioneer (acting on behalf of the vendor) in the event of such resale is entitled to:

a) The total amount of any and all commissions and/or buyers premiums applicable or any other fees and commissions lost as a result of the purchaser defaulting on the purchase.

b) The full cost of advertising and all other expenses related to re-sale as deemed necessary, including any storage costs and insurance charges.

c) Any differential in price from the initial sale price to the price achieved in re sale of the items(s).

11. A service charge of 2% compound per month (or part thereof) will be added to overdue accounts (30 days after the date of Auction is the overdue period for all unpaid accounts). In any event the title of any lots sold will not pass to the purchaser until the full amount of the purchasers auction account has been fully paid and remitted to the vendor, including any other service charges, storage or any other fees resulting from any late payments.

12. Estimates are given only as a guide, and not given as starting points for bidding: Lots may sell for a price greater than or less than these estimates. Bidding will start at an increment above the lowest postal bid received, or at the Auctioneers sole discretion. All prices are in Australian Dollars.

13. All images, text and information supplied in this catalogue remain the property of International Auction Galleries, and may not be used or transmitted in any way without written permission.



LOT 411



LOT 416



LOT 417



LOT 420



LOT 412



INTERNATIONAL
AUCTION
GALLERIES

www.iagauctions.com

Ph: 07 5538 0300

Fax: 07 5538 7296

P.O. Box 1380

Broadbeach Qld 4218 Australia

mail@iagauctions.com

www.iagauctions.com