



INTERNATIONAL  
**AUCTION**  
GALLERIES



Australian & World Rare Coin & Banknote

# AUCTION 80

Sunday 28th September 2014

Sofitel Hotel, Gold Coast Queensland





LOT 367



LOT 369



LOT 373



LOT 375

# Welcome to IAGs Sale 80

*Welcome to our final Live Auction for 2014! This Auction again provides a great selection featuring some really interesting and high quality lots at what may well be the final time at these prices! This Sale is packed with fantastic bargains thanks to a record number of estates and more liquidated stock being brought to market. There is no doubt the time to buy is now, and those who hesitate this time will definitely miss out!*

*Please Note: We initially advertised that Sale 80 would be on Saturday the 27th, as it has been our intention to move the Auctions to Saturdays so as to best accommodate the needs of our clients better. However, we did not at the time realize this would mean clashing with the AFL Grand Final, thus this Sale has been moved back to the traditional Sunday date. Our next sale in March will take place on a Saturday, so please be aware of this change from now on!*

*We are continuing to move the Sales more online. As things progress, this is proving more and more to be the future direction as far as Auctions go. We are looking at implementing live bidding within the next 18 Months, and have been continually upgrading our programs and online content to make bidding and viewing even easier and more user friendly. We are still the only Auction House that has EVERY SINGLE LOT in the sale photographed with clear, high resolution images for even better viewing. I would urge all of our clients to continue to sign up and use the web services provided for an improved auction experience!*

## Some Sale 80 Auction Highlights and more...

A brief selection here of just some of the many highlights underlines the fantastic value of the lots on offer in this Auction. A prime example is the 1914H Specimen Proof Florin with superb pedigree, this lot is the key highlight of the sale. One of only three known examples, this superb coin is Ex. the Birmingham Mint Collection, as well as several major Auctions from 1985 on, with the last realised price in 2011 of \$221,350. Estimated at only \$100,000, this is a fantastic opportunity to purchase a genuine numismatic rarity at a true bargain price!

Other key items include a range of early Australian Commonwealth Pre Decimal Proof issues, including a Penny, Three-pence, Shilling and Florin from 1934. The Penny in particular, is a truly superb graded piece, and the best one I have seen. Also there is a superior grade Proof 1937 Crown, with lovely original fields, a Proof Halfpenny and Penny 1953, and a 1916 Specimen Shilling. A high grade 1956P Proof Penny is also one of the finest known of this date. Estimates start from only \$7,000 and go to \$20,000 for the 1937 Crown, with these all being offered at reduced reserves that are up to a fifth of their original costs.

Other key items include a Holey Dollar and two lower grade Dumps, a collection of British coins, with a 1701 5 Guineas and a very rare Irish Emergency Crown just two of the high-

lights, as well as a large and diverse collection of high grade and PCGS graded Australian Commonwealth issues from \$50 to \$15,000, including an UNC 1925 Penny estimated at \$12,000. There is also a range of interesting and rare World Coins, some superb Mis-struck coins including an amazing 50 Cent Brockage, Bullion, World and Australian gold coins, along with a small but interesting collection of rare Medals, including several in gold including a Gold Nobel medallion and a superb cased Prize Medal 1879 and so much more.

Banknotes of note include a 1 Pound Bank of NSW very rare Superscribed 1 Pound Bank of NSW issue estimated at \$65,000, along with many original, UNC George V in high grades including a consecutive pair of 10 Shillings 1928, a 10 Shilling 1942 and 5 Pound 1960 Starnote in high grade, and a full collection of Decimal Starnotes. Misprints, Decimal notes, solid serial numbers, radar notes, interesting serial numbered notes and first and last prefixes are just part of the substantial Banknote offerings in this sale.

Once again this superb sale has something for every collector, and every budget!

## Happy Collecting to all!

**Viewing:** There will be viewing for interstate dealers in our Offices: Friday 26th & Sat 27th September By Prior Appointment Only.  
Level 2 - Sonata - Cnr. Queensland Avenue & Surf Parade, Broadbeach QLD 4218.

**Phone:** (07) 55 380 300 or **Mobile:** 0412 722 043 (Business Hours Only)  
**Email:** mail@iagauctions.com **Website:** www.iagauctions.com

## Welcome to IAG's Sale 80

**Sunday 28th September 2014 at 2pm.**

Sofitel Gold Coast – 81 Surf Parade Broadbeach QLD.

### Important Auction Information:

**Viewing & Auction:** Sofitel Gold Coast – Sorrento Room.

**Viewing and Auction Times** – Viewing – Auction day Sunday 28th 11am to 2pm. The Auction will commence at 2pm with Session 1, and will take approximately 4 hours to complete the whole auction. Session 2 will start with lot 365 after a short break.

There will also be limited viewing for interstate clients only on Friday 26th and Saturday 27th September, strictly by appointment, in our offices from 9-5pm, Level 2, 20-22 Queensland Avenue, Broadbeach, Gold Coast, Queensland. Other times may be available by appointment only. Please call our office on (07) 55 380300 for any further details, or for information regarding viewing appointments, or email us at [mail@iagauctions.com](mailto:mail@iagauctions.com)

Please visit the website [www.iagauctions.com](http://www.iagauctions.com) for further details and a map of the venue location, along with enhanced Lot by Lot item viewing, full Lot information and a watchlist and Postal Bidding features for all registered users.

**Payment:** All amounts are in Australian Dollars. Credit Cards (accepted with signature & full address details): MasterCard, Visa & AMEX only. A Surcharge of 3% will be applied to all AMEX card charges only.

**Buyers Premium:** A 19.25% total Buyers Premium will be added on to the knock-down price of all lots. Additional credit card charges will be waived with any payments made with either Visa or MasterCard.

**Postal Bidders:** Will be advised of successful bids, and items will be dispatched only upon receipt of payment in full. Unsuccessful postal bidders will also be notified, and will also receive an auction prices realised when they are posted.

**All Postal (fax/phone/post/via web submission) bidders please note:** All non Online bids must be received by 5pm Friday 11th April, although earlier is advised. This includes Postal bids that are submitted directly via the website: [www.iagauctions.com](http://www.iagauctions.com) through the Online bidding form submission page. Please keep in mind that the earliest received bid will always get preference in the case of there being two or more identical high bids registered. All Postal Online and non Online bids are subject to the Auction Terms and Conditions, and must be accepted (non Online bids with fax and posted forms signed) before bids will be valid.

**Web (Online) Postal bids:** Only Online bids placed by registered members through their own personal accounts will be accepted after 5pm Friday 26th. Acceptance of Online bids will close at 12pm on Sunday 28th September (Auction Day) - 2 Hours before the live Auction start, and all Postal bidding will be collated to be used at the Live Auction starting at 2pm.

Online members must build a bidding "Watchlist". This is used to control, view and submit your bids automatically via the website direct. Bidding via the website for all registered members will show you your current successful/unsuccessful bids (in relation to other postal bids) as they are received or as they meet the lots reserves. This can also be viewed in the "Sale 80 Lots" section. Only bids that meet reserves will be shown. The "View All Lots With Bids" function will create a PDF where all current successful postal bids on every lot can be viewed prior to the commencement of the Live Sale.

**Note:** All Online bidding is subject to change as the Live Auctions starts and online bids compete with the "Live" portion of the sale. It is advised that you ensure that you bid your maximum bid, as even if you are winning the item Online before the Online bids closes, the "Live" floor bidding may well compete and outbid your current bid. If you have any bidding questions, please contact us.

**Postage and Insurance:** Small items under \$200 - \$7.50 via normal mail, Small items between \$200 and \$1000 - \$12.50 via registered post, Items over \$1000 - \$17.50 via registered post person to person, Heavier items over 500 grams have an additional charge of \$2 per KG or part thereof. International post will be at cost but not insured. Bullion Gold items will not be posted, please contact us to make other arrangements. Items will not be insured at all unless it is requested. Insurance is charged at \$1 per \$100 upon request. Credit cards: Successful buyer's lots will be processed and dispatched for existing clients upon clearance of all funds. At our discretion we reserve the right to hold new clients lots who pay by credit card for up to 60 days. All postal bid payments are to be completely finalised within 14 days of sale please. For any more information please contact us during business hours at our office on:

(07) 55 380 300. Alternatively you can email us at: [mail@iagauctions.com](mailto:mail@iagauctions.com)

**Direct Bank Payments/Postage:** Please advise us if you are paying by electronic transfer to ensure that your payments get processed effectively. Make sure to include your name and invoice number in your payment. Please note that items won't usually be dispatched before three days after cleared payment has been confirmed. Where possible, all items will be posted on a Monday or Tuesday.

**Bank:** ANZ Broadbeach  
**Account:** Paradise Coins Pty Ltd.  
T/A International Auction Galleries  
**BSB:** 014 513  
**Account No:** 1027 43868

**Happy Collecting to All.**

## Table of Contents

|  |    |
|--|----|
| World Coins                                      | 5  |
| Australian Proclamation Coins                    | 7  |
| Australian Pre Decimal Coins I                   | 9  |
| Australian Pre Federation Banknotes              | 14 |
| Australian Superscribed Banknotes                | 17 |
| War Related Banknotes                            | 17 |
| Superior Australian Pre Decimal Banknotes        | 18 |
| British Coins                                    | 22 |
| Australian Pre Decimal Starnotes                 | 24 |
| Australian Decimal Starnotes                     | 25 |
| World Gold Coins                                 | 27 |
| Australian Gold Coins                            | 28 |
| Modern Australian Bullion Coins                  | 30 |
| First Prefix Australian Banknotes                | 31 |
| Last Prefix Australian Banknotes                 | 32 |
| Misprinted Australian Banknotes                  | 33 |
| Colonial Dumps and Holey Dollars                 | 34 |
| Australian and Related Coin Rarities             | 36 |
| Australian Pre Decimal Coins II                  | 39 |
| Australian Pre Decimal Proof Coins               | 50 |
| Unofficial Patterns, Restrikes & Forgeries       | 52 |
| Internment Camps                                 | 52 |
| Australian Interesting Serial Numbered Banknotes | 53 |
| Australian Radar Serial Numbered Notes           | 54 |
| Australian Solid Serial Numbered Banknotes       | 55 |
| Australian Decimal Banknotes                     | 56 |
| Mistruck Error Coins                             | 58 |
| World Banknotes                                  | 60 |
| Medals & Medallions                              | 60 |
| Australian Tokens                                | 63 |
| Miscellaneous Australian Banknotes               | 64 |
| Miscellaneous Australian Coins                   | 65 |
| Perth Mint Products                              | 67 |
| Royal Australian Mint Products                   | 68 |
| Miscellaneous & Unreserved Lots                  | 68 |



- 3 Cocos Keeling Islands 1977 boxed Proof silver pair 10 Rupee and 25 Rupee. Light toning, in original box as issued with certificate. *FDC*

\$325 - \$350



- 4 Cocos Keeling Islands 1977 boxed Proof gold 150 Rupees (1/2 oz). In original box as issued with certificate. *FDC*

\$400 - \$450

## World Coins

- 1 Angola (Portuguese Africa) 12 Macutas 1796. Maria I. Toned. *aVF*
- \$110 - \$120



- 2 Canada Dollar 1935. PCGS graded MS 66. Full frosty mint bloom. *GEM UNC*

\$500 - \$550



- 5 German East Africa 2 Rupees 1894. Wilhelm II. Old gunmetal tone. On old Spink Auctions card, lot 1635. Scarce. *gVF/aEF*

\$400 - \$450

- 6 German New Guinea 1 Pfennig 1894A. Mint brown and red lustre. *UNC*

\$260 - \$280

7 German New Guinea Half Mark 1894A. Old tone. *aUNC*  
\$400 - \$450



8 German New Guinea Half Mark 1894A. PCGS graded MS 64. Light tone and mint bloom. Scarce. *Ch.UNC/GEM*  
\$1100 - \$1200



9 German New Guinea 5 Marks 1894A. Dark toned. *VF/gVF*  
\$1500 - \$1600

10 German Thaler 1608. Sachsen-Altenburg. Johann Phillip. On old Spink Auctions card, lot 1647. Old toned. *gF/aVF*  
\$170 - \$180

11 German Thaler 1609. Manfield-Bornstedt-Johann. Deep old tone. On old Spink Auctions card, lot 1640. *gFINE*  
\$150 - \$160



12 Germany Thaler 1671. Saxe-New Gotha. Old tone and of an attractive style. On old Spinks Coin Auctions card, lot 263. Rare. *EF*  
\$500 - \$600

13 Germany Thaler 1761. Nuremberg (Imperial City). Toned. On old Spink Auctions card, lot 1641. *aVF*  
\$160 - \$180

14 Germany Thaler 1763. Saxony, Friedrich Christian. On old Spinks Coin Auctions card, lot 266. *gVF/aEF*  
\$280 - \$300

15 Isle of Mann Proof Penny 1786. Brown, with hints of red. A few very minor marks. Scarce. *aFDC*  
\$400 - \$450



16 Italy Scudo 1758. Papal States. Deep old tone. Scarce and attractive. *gEF*  
\$500 - \$550



17 Italy Scudo 1830. Papal State. Deep old tone. *gEF*  
\$180 - \$200



18 Italian States Crown (10 Paoli) 1806. Tuscany. Deep old tone. *gEF*  
\$325 - \$350

19 Mauritius 1 Cent 1911. PCGS graded MS 64RB. Red and brown. *Ch.UNC/GEM*  
\$120 - \$140

20 Mauritius Half Rupee 1934. PCGS graded MS 64. Mint bloom. *Ch.UNC/GEM*  
\$220 - \$240

21 New Zealand Threepence 1934. PCGS graded MS 63. Toned. *Ch.UNC*  
\$50 - \$60

22 New Zealand Shilling 1935. PCGS graded MS 64. Nice old tone with bloom.  
*Ch.UNC/GEM*

\$180 - \$200



23 Russia 10 Zolotniks Alexander III. N/D 1881-1901. Mining token. Toned, on old Spink Auctions card, lot 1182 (Sale 14, November 1984). Rare. *EF*

\$400 - \$500

24 Russia 20 Kopeks 1857. Alexander II. *aUNC*

\$70 - \$80



25 Russia Rouble 1839. Battle of Borodino commemorative. Some light surface marks, but little actual wear. Rare. *aEF*

\$700 - \$800



26 Russia Rouble 1883. Alexander III Coronation commemorative. *EF*

\$200 - \$220



27 Russia Rouble 1892. Alexander III. *aEF*

\$240 - \$250

28 Russia Rouble 1897. Nicholas II. *gVF*

\$50 - \$60

29 Russia Rouble 1913. Tercentenary of the Romanov Dynasty. *EF*

\$80 - \$100

30 Russia Rouble 1924. St Petersburg. *aEF*

\$60 - \$80

31 Spain 5 Pesetas 1823. Ferdinand VII, Majorca. Old edge chip in flan, toned. On old Spinks Coin Auctions card, lot 321. *aVF*

\$180 - \$200

32 USA 1936D Commemorative Half Dollar. Rhode Island. In PCI pack described as MS 65. *Ch,UNC*

\$90 - \$100

### Australian Proclamation Coins

33 Bolivia 8 Reales 1820PJ. Ferdinand VII. Light tone with some bloom. *EF*

\$240 - \$250



34 Bolivia Gold 8 Escudos 1806PJ. Charles III. Portrait a little weak, Reverse bloom. *VF/aEF*

\$1300 - \$1400

35 GB Cartwheel Twopence 1797. Slight edge knock. *gVF*

\$100 - \$110



36 GB Gold Spade Guinea 1797. George III. Mint bloom. *aU/UNC*

\$900 - \$1000



37 India Half Pagoda 1808. British India. Old tone with green and blue highlights. Scarce. *gVF/aEF*

\$500 - \$550

38 Mexico Pillar Half Real 1753Mo. Ferdinand VI. *gFINE*

\$60 - \$70

39 Mexico 2 Reales 1782Mo FF. PCGS graded AU 55. Old tone. *gEF/aUNC*

\$270 - \$280



40 Mexico Pillar 8 Reales 1758MM. Light tone. *gVF*

\$500 - \$550



41 Mexico 8 Reales 1796FM. Charles III. *gEF/aUNC*

\$400 - \$450

42 Mexico 8 Reales 1807TH. Charles IV. Light tone with some lustre. *EF*

\$260 - \$280

43 Mexico 8 Reales 1808TH. Charles III. Light tone. *EF*

\$260 - \$280



44 Mexico 8 Reales 1809TH. Ferdinand VII. Sharply struck, toned. *aUNC*

\$500 - \$550

45 Mexico 8 Reales 1810HJ. Ferdinand VII. *aEF*

\$240 - \$260



46 Netherlands 1 Gulden 1794. Full mint bloom. Scarce this nice. *Ch.UNC*

\$300 - \$350

47 Netherlands 3 Gulden 1795. Batavia. Toned. *EF*

\$240 - \$250



48 Peru 8 Reales 1802IJ. Charles III Lima. Considerable mint lustre. Scarce this nice. *aUNC*

\$600 - \$650



49 Portugal Half Johanna 1769R. Joseph I. Some lustre. *aEF*

\$1300 - \$1400

50 Spain 8 Reales 1805FA. Charles III. Uneven tone. *EF*

\$380 - \$400



**Halfpenny**

51 1915H. Key date. 6 Pearls and nearly full centre diamond. *gVF*  
\$150 - \$160

52 1918I. Key date. Brown, slight Reverse planchet flaw. *gVF/aEF*  
\$180 - \$200

53 1921. Red and brown. *UNC*  
\$160 - \$180



54 1923. Key date. Reverse surface adhesions. *VG/aFINE*  
\$800 - \$900

55 1928. PCGS graded AU 58. Brown. *aUNC*  
\$110 - \$120

56 1929. PCGS graded AU 58. Dark brown. *aUNC*  
\$100 - \$110

57 1933. Mint red and brown. *Ch.UNC*  
\$120 - \$140

58 1938. Mostly mint red. *UNC/Ch.UNC*  
\$70 - \$80



59 1938. PCGS graded MS 64 RB. Full mint red. *Ch.UNC/GEM*  
\$260 - \$280

60 1940. PCGS graded MS 63 RB. Virtually full mint red.  
*Ch.UNC*  
\$280 - \$300

61 1942Y. PCGS graded MS 63 BN. Full glossy mint bloom, minor carbon streak on Obverse. *Ch.UNC*  
\$220 - \$240

62 1953A. PCGS graded MS 63RB. Mint red and brown. *Ch.UNC*  
\$40 - \$50

**Penny**

63 1915H. Brown. *gVF/aEF*  
\$100 - \$110



64 1918I. Key date. Brown and some red lustre. Scarce. *aU/UNC*  
\$750 - \$800

65 1925. Key date. A few marks. *FINE*  
\$120 - \$140

66 1925. Key date. A few marks. *FINE*  
\$120 - \$140

67 1925. Key date. *aVF*  
\$150 - \$160

68 1933. Brown. *UNC*  
\$70 - \$80

69 1935. Mint brown and red. *UNC*  
\$90 - \$100

70 1936. Brown and red. *UNC*  
\$120 - \$140

71 1936. Glossy mint red and brown bloom. *Ch.UNC*  
\$180 - \$200

72 1941. PCGS graded MS 63 RB. Mint red and brown. *Ch.UNC*  
\$140 - \$160



73 1944Y. PCGS graded MS 64RB. Mostly mint red. *Ch.UNC*  
\$200 - \$220

74 1951PL. PCGS graded MS 65RD. Full mint red. *GEM UNC*  
\$180 - \$200

### Threepence

75 1910. A little weakly struck, toned with some bloom. *UNC*  
\$70 - \$80

76 1910. Light tone with underlying bloom. *Ch.UNC*  
\$120 - \$140

77 1912. Light tone with some bloom. *EF*  
\$160 - \$180

78 1916. Slight Obverse edge knock. *aEF*  
\$70 - \$80

79 1917. Toned, some Reverse scratches. *aU/UNC*  
\$110 - \$120



80 1918. PCGS graded MS 63. Toned. *Ch.UNC*  
\$325 - \$350



81 1921M. *UNC*  
\$140 - \$150



82 1927. Original bloom, and nicely toned. *UNC*  
\$180 - \$200

83 1928. Some mint bloom. *aU/UNC*  
\$130 - \$140

84 1934. Some bloom. *aU/UNC*  
\$100 - \$110



85 1942. Key date. Light tone. *aEF*  
\$120 - \$140

86 1952. PCGS graded MS 65. Toned. *GEM UNC*  
\$100 - \$110

87 1957. PCGS graded MS 66. *GEM UNC*  
\$40 - \$50

88 1963. PCGS graded MS 66. High grade. *GEM UNC*  
\$80 - \$100

89 1964. PCGS graded MS 66. High grade. *GEM UNC*  
\$80 - \$100

## Sixpence

- 90 1911. Light tone. *gVF/aEF*  
\$70 - \$80
- 91 1917. Some lustre. *aUNC*  
\$280 - \$300
- 92 1921. Old gunmetal tone. *aU/UNC*  
\$280 - \$300
- 93 1927. Toned with some bloom. *gEF/aUNC*  
\$70 - \$80
- 94 1927. PCGS graded MS 62. Toned, well struck with bloom. *UNC/Ch.UNC*  
\$300 - \$350
- 95 1928. Dark old toning. *aU/UNC*  
\$140 - \$150
- 96 1950. PCGS graded MS 64. Brilliant bloom. *Ch.UNC/GEM*  
\$210 - \$220
- 97 1952. Light tone. Scarce. *aUNC*  
\$140 - \$160
- 98 1956. *Ch.UNC*  
\$100 - \$120
- 99 1957. PCGS graded MS 65. *GEM UNC*  
\$100 - \$110
- 100 1962. PCGS graded MS 66. *GEM UNC*  
\$40 - \$50

## Shilling



- 101 1911. Light toning. *aEF*  
\$170 - \$180

- 102 1912. Old gunmetal tone. *EF*  
\$240 - \$260
- 103 1915. Key date. *gF/aVF*  
\$170 - \$180



- 104 1917. Light tone with some bloom. *UNC*  
\$325 - \$350



- 105 1921 Star. Key date. *aVF*  
\$180 - \$200
- 106 1922. Some mint bloom. *gEF/aUNC*  
\$220 - \$240
- 107 1924. *gVF/aEF*  
\$90 - \$100
- 108 1927. Light tone. *gEF/aUNC*  
\$100 - \$120
- 109 1933. Key date. Some Obverse digs. *gF/aVF*  
\$150 - \$160



- 110 1933. Key date. Full band with 8 Pearls, a few minor scratches. Scarce. *gVF/aEF*  
\$350 - \$400



111 1940. Light tone. Obverse scratch.  
*aU/UNC*  
\$220 - \$240



120 1910. Light tone. *gVF*  
\$300 - \$325



112 1944S. PCGS graded MS 65. Mint bloom.  
*GEM UNC*  
\$180 - \$200

121 1912. Light tone. *aVF*  
\$180 - \$200



122 1913. *VF*  
\$250 - \$260

113 1957. PCGS graded MS 65. *GEM UNC*  
\$110 - \$120

123 1916. Toned with some bloom. *aEF*  
\$80 - \$90

114 1958. PCGS graded MS 65. *GEM UNC*  
\$180 - \$200

115 1961. PCGS graded MS 66. High grade.  
*GEM UNC*  
\$80 - \$100



124 1917. Some lustre and light tone.  
*gEF/aUNC*  
\$250 - \$260

116 1962. PCGS graded MS 65. *GEM UNC*  
\$40 - \$50

117 1962. PCGS graded MS 66. High grade.  
*GEM UNC*  
\$80 - \$100

125 1919. *gVF*  
\$240 - \$250

118 1963. PCGS graded MS 65. *GEM UNC*  
\$30 - \$35

**Florin**



119 1910. Type coin. *aVF*  
\$240 - \$250



126 1921. Light tone. *EF*  
\$350 - \$375

127 1923. 6 pearls, lightly cleaned.  
*gF/aVF*  
\$70 - \$80



128 1923. Light tone. *VF*  
\$220 - \$240

129 1924. Light tone. *gF/aVF*  
\$100 - \$110

130 1927. A few Obverse scratches.  
*aEF*  
\$70 - \$80

131 1927 Canberra. PCGS graded MS 61. Toned.  
*UNC*  
\$40 - \$50

132 1927 Canberra, and 1934/5 Melbourne  
Centenary. (2 coins total). *aVF*  
\$240 - \$250

133 1927 Canberra, 1943/5 Melbourne  
Centenary, 1951 Coronation, 1954 Royal  
Visit Commemoratives. (4 coins total).  
*gEF-UNC*  
\$340 - \$350

134 1931. Some rusty surface tone.  
*aUNC*  
\$100 - \$110

135 1932. Key date. *VG*  
\$170 - \$180

136 1932. Key date. *VG*  
\$170 - \$180

137 1932. Key date. *VG*  
\$170 - \$180

138 1932. Key date. Obverse flan flaw/cracks.  
*VG/aFINE*  
\$170 - \$180



139 1932. Key date. 6 Pearls. *gF/aVF*  
\$300 - \$325



140 1933. *gVF*  
\$300 - \$325

141 1934. *aEF*  
\$80 - \$100

142 1936. Bright bloom. *UNC/Ch.UNC*  
\$280 - \$300

143 1939. Key date. *VF*  
\$90 - \$100

144 1934/5 Melbourne Centenary. Minimal  
wear, but surface marks. *gVF*  
\$240 - \$250



145 1934/5 Melbourne Centenary. Toned,  
good wreath. *gEF*  
\$300 - \$325

146 1944S. PCGS graded MS 64. *Ch.UNC/GEM*  
\$110 - \$120

147 1945. PCGS graded MS64. Well struck and  
fully brilliant. *Ch.UNC/GEM*  
\$280 - \$300

148 1947. PCGS graded MS 63. *Ch.UNC*  
\$70 - \$80

- 149 1954 Royal Visit. PCGS graded MS 63.  
Ch.UNC  
\$90 - \$100



- 150 1958. PCGS graded MS65. Mint bloom.  
GEM UNC  
\$260 - \$280

**Crown**

- 151 1937. Old tone with underlying bloom.  
Ch.UNC  
\$140 - \$150

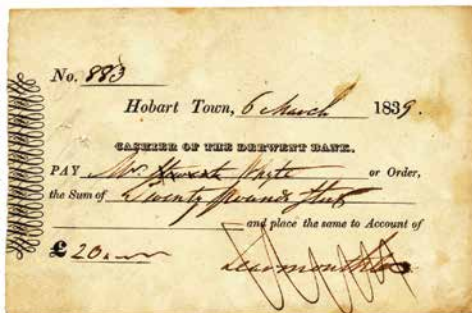
- 152 1938. gVF  
\$140 - \$150

- 153 1938. Some tone. gVF  
\$140 - \$150

- 154 1938. Toned. gVF  
\$140 - \$150

**Australian Pre Federation Banknotes**

- 155 Blank unused Cheque. South Australian  
Banking Co, Port Adelaide 18--. Tear at top.  
Scarce. aVF  
\$90 - \$100



- 156 Cashier's cheque, Derwent Bank, Hobart  
Town 6-3-1839. Payable to Mr Howard  
Whyte for Twenty Pounds. Fully signed,  
and signed in ink on back by C L Whyte.  
gVF  
\$140 - \$150

- 157 Bill of Exchange. National Bank of Australasia,  
Adelaide 21-10-1889, for Three Pounds,  
Fourteen Shillings & 6 Pence. With bank  
stamp, embossed One Penny Duty Stamp,  
Commercial Bank of Tasmania & National  
Bank of Australia stamps. aVF  
\$140 - \$150

- 158 5 Shillings Van Diemens Land, Hobart Town  
189-. Black and White Printer's Proof on thin  
card. Rare. EF  
\$350 - \$400



- 159 Ten Shillings NSW Colonial Police Fund  
note, 1816. Unissued on watermarked  
paper. Frayed edges with some tearing, frail  
looking but with good paper. Ex IAG Sale 74  
June 2011 Sold for \$33,202. A very rare and  
early colonial issue. VG  
\$4000 - \$4500



- 160 One Pound Bukkulla Vineyard, McIntire  
River, Inverell. Signed and issued 9-4-1870,  
crossed paid and stamped. Type 1a (light  
blue print type). Two minor pin holes and  
rounded corner. Ex W Mira Collection, and  
in generally superior grade to most. Scarce.  
EF  
\$900 - \$1000



- 161 One Pound Bank of New South Wales,  
Sydney 1858. Fully signed and issued 1-7-  
1858 (MVR 7b). Edges folded, some red  
stains on back but a whole note. EX IAG  
Sale 70 September 2009 (sold for \$23,300  
post sale). Extremely rare especially from  
this early period of the 1850's. VG  
\$3500 - \$4000



162 One Pound The National Bank of Australasia, Melbourne 1-6-1893. (MVR 4M) .Punched SPECIMEN BW & Co. with 10 May '93 written in pencil in margin. Scarce. *UNC*

\$4400 - \$4500



163 One Pound London Bank of Australia Ltd, Sydney 1-10-1898. (MVR 2g). Punched SPECIMEN with 10 Jan 1899 written in pencil in the margin. Scarce. *UNC*

\$3500 - \$3800



164 One Pound Queensland Government, Brisbane 2-7-1906. (MVR 2). Fully signed and issued general issue note. Some small pinholes and traces of wear at back. Ex IAG S72 Spetember 2012 Estimated at \$52,000-\$54,000. An attractive example in good grade for this rare and historically important issue. *FINE*

\$7000 - \$7500



165 Five Pound London Bank of Australia Ltd, Melbourne 1-1-1898. (MVR 2g). Punched SPECIMEN. Scarce. *UNC*

\$3800 - \$4000



166 One Pound Western Australian Bank Specimen, Perth 1-7-1906 (MVR 3c). Pencil notations in margin '11 Oct 1906' and perforated 'CANCELLED'. Scarce. *UNC*

\$4000 - \$4500



167 Five Pound Western Australian Bank Specimen, Perth 2-7-1906 (MVR 3c). Perforated 'SPECIMEN' from the Reverse of the note. Very scarce. *UNC*

\$5500 - \$6000



168 Ten Pound Western Australian Bank Specimen, Perth 1-1-1906 (MVR 3c). Pencil notation in margin '1st Feb 1906' and perforated 'SPECIMEN'. Rare. Originally sold as a set of three notes with the 1 Pound and 5 Pound (above). *UNC*

\$7250 - \$7500



169 Fifty Pound Federal Bank of Australia black and white printers Specimen. Melbourne 18--. (MVR 1). 4 minor marks on Reversers from mounting. Extremely rare from this bank and denomination. *gEF*

\$2400 - \$2500

## Postal / Online Bidders:

Postal / Fax bids finish at  
5pm AEST Friday 26th September 2014.

**Online postal bidding finishes at  
12pm AEST Sunday 28th September!**



Australian Superscribed Banknotes



- 170 One Pound Bank of New South Wales. No domicile, 1-10-1907 (MVR 15). Superscribed 1 Dec 1910. Part corner missing, some folds but with good colour and body, and an attractive appearance. Ex IAG sale 68 September 2008 as a new find. Extremely rare, one of only 4 examples known. *gFINE*

\$65000 - \$70000

War Related Banknotes



- 171 Sixpence Hay Internment Camps WW II. Camp 7, 1-3-1941 Epstein-Stahl. Scarcer signature type. *EF*

\$6800 - \$7000

Superior Australian Pre Decimal Banknotes



172 Ten Shillings. 1913 Collins-Allen (R 1c). The first circulating Ten Shillings, issued with red serial numbers. A complete note with no edge tears or pin holes and in original condition with good colour, edges and body. Very Rare, and a premium example of this issue. *aVF* \$25000 - \$26000



173 1915 Collins-Allen (R 2a). Lightly cleaned, small edge stain, some minor edge tears. A rare issue. *VG* \$1700 - \$1800



175 1918 Cerutti-Collins (R 3b). Some heavy old folds, but good original paper and colour. A nice type note. *aVF* \$1700 - \$1800



174 1918 Cerutti-Collins (R 3a). Pinholes and paper somewhat worn with slightly ragged edges. The rare medium serriffed serials issue, with approximately 15 examples known. *VG* \$1400 - \$1500



176 1926 Kell-Collins (R 5). Crisp and original, with only very light handling. Rare. *aUNC/UNC* \$11000 - \$12000

177 1927 Kell-Heathershaw (R 6). A key note to the Gold bearing series. Scarce. *FINE*

\$1200 - \$1400

178 1927 Kell-Heathershaw (R 6). Small repaired tear at top. Scarce. *aVF*

\$1300 - \$1400

179 1928 Riddle-Heathershaw (R 7). Tiny pinhole, but crisp. *VF*

\$900 - \$1000

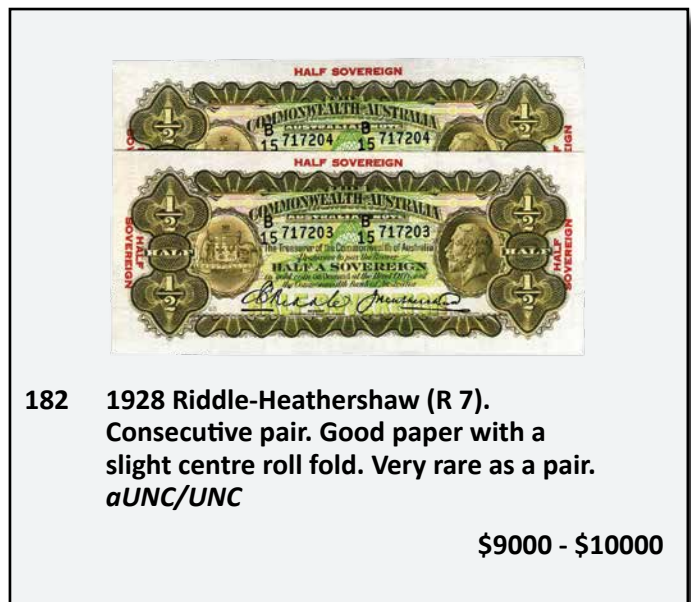
180 1928 Riddle-Heathershaw (R 7). Several light folds. *gVF/aEF*

\$1400 - \$1500



181 1928 Riddle-Heathershaw (R 7). Crisp original paper with only light handling. Scarce. *aUNC/UNC*

\$6000 - \$6500



182 1928 Riddle-Heathershaw (R 7). Consecutive pair. Good paper with a slight centre roll fold. Very rare as a pair. *aUNC/UNC*

\$9000 - \$10000

183 1934 Riddle-Sheehan red overprint (R 10). Centre fold, original and crisp. *EF*

\$1700 - \$1800

184 1934 Riddle-Sheehan (R 10). Centre fold, crisp. Scarce. *aUNC*

\$3800 - \$4000



185 1934 Riddle-Sheehan (R 10). Red imprint type. Crisp, with light handling. *aUNC/UNC*

\$5000 - \$5500

186 1939 Sheehan-McFarlane (R 12). *aUNC*

\$750 - \$800

187 1939 Sheehan-McFarlane (R 12). Consecutive trio. Fresh, small stain on one note, bend and flicks. *aUNC*

\$1700 - \$1800

188 1942 Armitage-McFarlane (R 13). *UNC*

\$800 - \$900

189 1949 Coombs-Watt (R 14). *UNC*

\$800 - \$900

190 1949 Coombs-Watt (R 14). *UNC*

\$800 - \$900

191 1952 Coombs-Wilson (R 15). *UNC*

\$800 - \$900



192 1952 Coombs-Wilson (R 15). Consecutive trio. Fresh and crisp with sheen. (3 notes total). *UNC*

\$1800 - \$2000

193 1961 Coombs-Wilson (R 17). *UNC*

\$150 - \$160

## One Pound

- 194 1914 Collins-Allen (R 18d). Small rust/rust hole and a bottom edge tear, otherwise a representative type note. *aFINE*

\$700 - \$800



- 195 1918 Cerutti-Collins (R 21). Nice type note with good colour and paper. *gF/aVF*

\$1400 - \$1500

- 196 1923 Miller-Collins with imprint (R 23a). Original and crisp. *VF*

\$1400 - \$1500



- 197 1923 Miller-Collins (R 23a). Imprint type. *aUNC*

\$6000 - \$6500

- 198 1923 Miller-Collins (R 23b). No imprint type. *VF*

\$1400 - \$1500



- 199 1926 Kell-Collins (R 24). Crisp and fresh paper, with a slight trace of a ripple as straight from a bundle. Rare this nice. *UNC*

\$12000 - \$14000

- 200 1926 Kell-Heathershaw (R 25). Flat, traces of folds. *gEF/aUNC*

\$3700 - \$3800



- 201 1927 Kell-Heathershaw (R 25). Consecutive trio. Fully crisp and lovely original notes with only very light traces of handling. Extremely rare in this grade and as a run of three. *aU/UNC*

\$30000 - \$32000

202 1927 Riddle-Heathershaw (R 26). Slight handling, crisp and fresh. *aU/UNC*  
\$1400 - \$1500

203 1927 Riddle-Heathershaw (R26). Consecutive pair. Light centre fold. Crisp and fresh. Scarce. *aUNC*  
\$3100 - \$3200



204 1927 Riddle-Heathershaw (R 26). Consecutive pair. *UNC*  
\$5500 - \$6000

205 1932 Riddle-Sheehan (R 27a). Thick signature type. Crisp with light old folds/bends. Scarce. *gVF*  
\$1600 - \$1800

206 1932 Riddle-Sheehan (R 27a). Thick signature type. Centre bend and light trace of folds. *gEF/aUNC*  
\$3400 - \$3500

207 1932 Riddle-Sheehan thin signature type (R 27b). Crisp and fresh with a centre fold. *EF*  
\$1500 - \$1600

208 1932 Riddle-Sheehan thin signature (R 27b). Light centre fold. *aUNC*  
\$2400 - \$2500

209 1933 Riddle-Sheehan (R 28). *aEF*  
\$500 - \$550

210 1933 Riddle-Sheehan (R 28). *gEF/aUNC*  
\$750 - \$800

211 1933 Riddle-Sheehan (R 28). *aUNC/UNC*  
\$1000 - \$1100

212 1938 Sheehan-McFarlane (R 29). Consecutive pair. *aUNC*  
\$750 - \$800

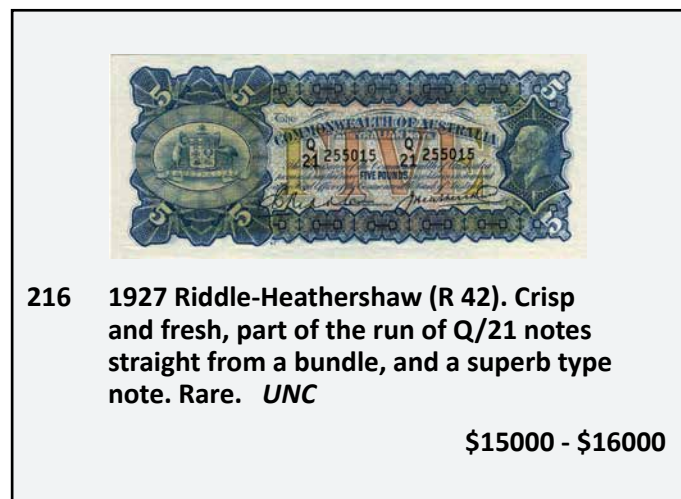
213 1953 Coombs-Wilson (R 33). *UNC*  
\$180 - \$200

### Five Pound



214 1918 Cerutty-Collins (R 37a). Very rare 'A' Suffix V type. Good colour with some handling. One of the finest known. *VF*  
\$6500 - \$7000

215 1918 Cerutty-Collins (R 37b). A little worn and dirty, but a complete no problems type note. *VG/aFINE*  
\$1400 - \$1500



216 1927 Riddle-Heathershaw (R 42). Crisp and fresh, part of the run of Q/21 notes straight from a bundle, and a superb type note. Rare. *UNC*  
\$15000 - \$16000

217 1933 Riddle-Sheehan (R 44a). Pink face type. *gVF*  
\$1200 - \$1400

218 1939 Sheehan-McFarlane (R 45). *aEF*  
\$700 - \$750



**219 1939 Sheehan-McFarlane (R 45). Consecutive run of 4. Light centre roll fold but crisp and original paper. Two small pinholes on each note, but no other real signs of any wear. Rare as a large consecutive run. Very high catalogue value. *aU/UNC***

**\$7500 - \$8000**

- 220 1941 Armitage-McFarlane (R 46). *aUNC*  
\$700 - \$800
- 221 1952 Coombs-Wilson (R 48). Consecutive pair with light centre bend. *aUNC*  
\$2100 - \$2200
- 222 1954 Coombs-Wilson (R 49). Consecutive pair. A little wavy. *UNC*  
\$750 - \$800
- 223 1960 Coombs-Wilson (R 50). Consecutive trio. Hint of bends. *aU/UNC*  
\$600 - \$700
- 224 1960 Coombs-Wilson Reserve Bank (R 50). Consecutive run of five. Crisp and fresh. (5 notes total). *UNC*  
\$1800 - \$2000



**225 Ten Pound. 1927 Riddle-Heathershaw (R 55). A good type note with nice colour. Scarce. *gEF***

**\$9000 - \$9500**

- 226 1934 Riddle-Sheehan (R 57). Multiple folds and creases, small stain. *FINE*  
\$600 - \$700
- 227 1949 Coombs-Watt (R 60). Has been flattened. *aUNC*  
\$850 - \$900
- 228 1949 Coombs-Watt (R 60). Crisp and fresh. *aUNC*  
\$1500 - \$1600
- 229 1949 Coombs-Watt (R 60). Crisp and original with a centre bend and flicks. *aUNC*  
\$1500 - \$1600
- 230 1949 Coombs-Watt (R 60). Crisp, minor edge fold. *aUNC*  
\$1700 - \$1800



- 231 1949 Coombs-Watt (R 60). Crisp, with raised ink on back with some sheen. Scarce. *UNC***
- \$4500 - \$5000**
- 232 1954 Coombs-Wilson Commonwealth Bank (R 62). Consecutive pair. Crisp with original sheen. *UNC*  
\$1700 - \$1800
- 233 1960 Coombs-Wilson (R 63). *UNC*  
\$700 - \$750
- 234 1960 Coombs-Wilson (R 63). Consecutive pair. *aU/UNC*  
\$750 - \$800

### British Coins

- 235 Penny 1848/7 Overdate Victoria. Brown with some red. *aUNC*  
\$140 - \$160

236 Penny 1853 Victoria. Brown with hints of lustre. *aUNC*

\$100 - \$120



241 Florin 1849. 'Godless' type. PCGS graded MS 64+. Old tone. Scarce this nice. *Ch.UNC*

\$1100 - \$1200

237 Ninepence in Silver Charles I 1645-6 Newark Seige. (S. 3144). Old tone, with some undertype visible and old graffiti on Obverse, otherwise a well struck example. Ex the Tom May collection, Nobles Sale 99 April 2012. Rare. *gVF*

\$2000 - \$2200



242 Halfcrown 1846. PCGS graded MS 64. Old tone with some underlying bloom. *Ch.UNC*

\$1100 - \$1200

238 Testoon (or Shilling) Henry VIII, N/D 1509-1547. Third coinage. (S.2365). Edge split in planchet, old tone and worn. Rare. *VG/aFINE*

\$550 - \$600



243 Crown Victoria, Gothic type 1847. (S.3883). Undecimo. Old gunmetal tone. Scarce. *gEF*

\$2000 - \$2200

239 Shilling Newark besieged 1646 Charles I. Lozenge shaped (S. 3143). A rare siege piece. A little worn on the Reverse as usual. Scarce. *FINE*

\$1800 - \$2000



244 Gothic Proof Crown 1847. PCGS graded PR 61 CAM. Toned with some bloom, a few minor marks. Rare. *FDC*

\$3800 - \$4000

240 Shilling 1873. PCGS graded MS 66. Deep old tone with underlying bloom. Scarce this nice. *Ch.UNC*

\$550 - \$600



245 Gold Unite James I 1603-1625. Some old scratches on Obverse. Scarce. *aVF*  
\$1600 - \$1800



246 Gold Laurel James I 1603-1625. Good portrait, although appears to have been cleaned. Scarce. *aVF*  
\$1400 - \$1500



247 Gold Laurel James I 1624. (S.2638B). A nice even example. *aVF*  
\$1400 - \$1500



248 Gold Five Guineas William III 1701. Fine Work type (S. 3456). Some mint bloom. Rare. *gVF/aEF*  
\$7000 - \$7500

249 Sovereign 1943 Victoria Shield. *FINE*  
\$380 - \$400



250 Ireland. Crown Charles I 1625-1640 (1642). (S. 6532) Emergency issue struck from flattened plate. Struck by the Lord Justices of Ireland during the Great Rebellion 1642-1649. Old tape marks on one side, slightly uneven tone and in good condition for issue. Ex Spink Auctions (London) Sale 38, lot 321 on original card. Very rare. *aVF*  
\$5500 - \$6000

Australian Pre Decimal Starnotes



251 Ten Shillings. 1942 Armitage-McFarlane (R 13sL) G/95 Last Prefix. Crisp and original note with full sheen and fresh with minimal handling and light bends. One of the finest known. Very rare and the key to the Star Note series. *gEF*  
\$26000 - \$28000





252 1949 Coombs-Watt (R 13s). Natural and crisp, with original sheen. Rare this grade. *aUNC*

\$11000 - \$12000



256 1961 Coombs-Wilson (R 34bs). A nice original example. Rare this grade. *UNC*

\$9000 - \$9500



253 1961 Coombs-Wilson (R 17s). Consecutive pair. Crisp paper, tiny paper stain on one note. Rare as such. *UNC*

\$11000 - \$12000



257 Five Pound. 1960 Coombs-Wilson (R 50s). A great type note for this rare issue. A trace of a light centre fold. *aUNC*

\$12000 - \$14000

## Australian Decimal Starnotes

### One Pound

254 1961 Coombs-Wilson (R 34bs). A nice type note. Scarce. *gEF/aUNC*

\$2600 - \$2800



255 1961 Coombs-Wilson Reserve Bank (R 34bs). Crisp and fresh with just a hint of a light centre bend. Scarce. *aU/UNC*

\$6000 - \$6500

### One Dollar Note

258 1966 Coombs-Wilson (R 71s). Nice fresh note. *UNC*

\$1700 - \$1800

259 1966 Coombs-Wilson (R 71s). Crisp with sheen, as straight from a bundle. *UNC*

\$1700 - \$1800



260 1967 Coombs-Randall (R 72s). Scarce. *gEF/aUNC*

\$1800 - \$2000

261 1969 Phillips-Randall (R 73s). Fresh with light folds and small stains. *aEF*

\$650 - \$700

## Two Dollar Note

- 262 1966 Coombs-Wilson (R 81s). A little worn.  
*gFINE*

\$180 - \$200



- 263 1966 Coombs-Wilson (R 81s). Rare Solid serial numbers ZFF 55555\*. A unique and interesting note being both a solid serial numbered note and a star note. Only a few examples of similar notes known. Rare.  
*FINE*

\$1800 - \$2000

- 264 1966 Coombs-Wilson (R 81s).  
*aUNC*

\$1100 - \$1200



- 265 1967 Coombs-Randall (R 82s). Scarce.  
*gEF*

\$1500 - \$1600

- 266 1968 Phillips-Randall (R 83s). Fresh, fold.  
*EF*

\$700 - \$800

## Five Dollar Note



- 267 1967 Coombs-Randall (R 202s). Scarce.  
*UNC*

\$4500 - \$5000



- 268 1969 Phillips-Randall (R 203s). Fresh. Very scarce, a key to the Decimal series. *UNC*

\$9000 - \$9500

## Ten Dollar Note



- 269 1966 Coombs-Wilson (R 301s). A little crinkled. *aU/UNC*

\$1400 - \$1500

- 270 1967 Coombs-Randall (R 302s).  
*gVF*

\$900 - \$950

- 271 1968 Phillips-Randall (R 303s).  
*gVF*

\$550 - \$600

- 272 1968 Phillips-Randall (R 303s). Pinhole.  
*gEF*

\$1000 - \$1100

## Twenty Dollar Note



- 273 1968 Phillips-Randall (R 403s). Crinkled, lightly cleaned. *EF*

\$1700 - \$1800



274 1972 Phillips-Randall (R 403s). Crisp with original sheen and only the lightest handling. *aUNC*

\$4800 - \$5000



279 Portugal Gold 4000 Reis 1690. Pedro II. Fully and sharply struck with mint bloom and in virtually perfect mint state as struck. Extremely rare, especially in this high grade and superb. *Ch.UNC/GEM*

\$5000 - \$5500

## World Gold Coins



275 Canada \$10 1914. PCGS graded MS 63. Ex the Canadian Gold Reserve. *Ch.UNC*

\$1100 - \$1200

276 Egypt Gold 20 Piastres 1923. Ahmed Fuad I. *gEF*

\$140 - \$150

277 Egypt Gold 50 Piastres 1923. Ahmed Fuad I. *aEF*

\$240 - \$250



278 Egypt Gold 100 Piastres 1923. Ahmed Fuad I. *gVF*

\$400 - \$450



280 Russia 15 Roubles 1897R. Nicholas II. *EF*

\$600 - \$650



281 South Africa Kruggerrand 1970. *UNC*

\$1350 - \$1400

282 South Africa Kruggerrand 1974. *UNC*

\$1350 - \$1400

283 South Africa Kruggerrand 1977. *UNC*

\$1350 - \$1400

284 USA Gold Dollar 1868. *VF*

\$180 - \$200



285 USA \$20 1922. Liberty. *gEF*

\$1400 - \$1500



286 USA \$20 1926. Liberty. *gEF*  
\$1400 - \$1500

290 1908S Edward VII. *EF*  
\$220 - \$240

291 1915M George V. NGC graded AU 55.  
*EF*  
\$200 - \$220

Australian Gold Coins

Half Sovereign



287 1861 Sydney Mint Young Head Victoria.  
Edge adjustment mark scrape else well  
struck with subdued bloom. Scarce. *UNC*  
\$4000 - \$4200

292 1915M George V. PCGS graded MS64. Mint  
bloom. *Ch.UNC/GEM*  
\$480 - \$500

Sovereign



293 1866 Sydney Mint Young Head Victoria.  
PCGS graded MS62. Some bloom. *UNC/Ch.UNC*  
\$3000 - \$3200



288 1872S Shield Victoria Young Head. Mint  
bloom. Rare date, especially in this grade.  
*UNC*  
\$9000 - \$9500



294 1868 Sydney Mint. Original mint bloom.  
*UNC*  
\$1400 - \$1500



289 1893M Shield Jubilee Head Victoria. Fully  
struck up with mint bloom and some minor  
Obverse marks. High catalogue value and  
rare this nice. *Ch.UNC/GEM*  
\$3800 - \$4000



295 1868 Sydney Mint Victoria. Type 2. Some  
bloom. Scarce. *UNC/Ch.UNC*  
\$2900 - \$3000



296 1870 Sydney Mint Victoria. Nice mint bloom. *UNC/Ch.UNC*  
**\$1800 - \$2000**



297 1870 Sydney Mint Young Head Victoria. PCGS graded MS62. Some mint bloom. Scarce. *UNC/Ch.UNC*  
**\$3000 - \$3200**



298 1874M Shield Young Head Victoria. NGC graded MS62. Obverse contact marks. Scarce. *aU/UNC*  
**\$1800 - \$2000**

299 1875S Shield Victoria Young Head. *VF*  
**\$380 - \$400**

300 1878S Shield Victoria Young Head. *aEF*  
**\$400 - \$420**

301 1885S Shield Young Head Victoria. PCGS graded MS62. Subdued bloom. *UNC/Ch,UNC*  
**\$1000 - \$1100**

302 1886S Shield Victoria Young Head. *VF*  
**\$380 - \$400**

303 1877M Young Head Victoria. S-3857 Long Tail variety. PCGS graded MS62. *UNC*  
**\$1100 - \$1200**

304 1882S Young Head Victoria. PCGS graded MS62. No BP type. Mint bloom. *UNC/Ch.UNC*  
**\$850 - \$900**

305 1886M Young Head Victoria. PCGS graded MS62. Some bloom. *UNC*  
**\$825 - \$850**

306 1887S Young Head Victoria. PCGS graded MS62. *UNC*  
**\$850 - \$900**



307 1887S Jubilee Head Victoria. NGC graded MS62. Scarce this grade. *UNC*  
**\$3400 - \$3500**

308 1888M Jubilee Head. Also 1910P Edward VII. (2 coins total). *VF*  
**\$700 - \$750**

309 1889S Jubilee Head Victoria. PCGS graded MS62. *UNC/Ch.UNC*  
**\$600 - \$650**

310 1890S Jubilee Head Victoria. PCGS graded MS62. *UNC*  
**\$600 - \$650**

311 1891S Jubilee Head Victoria. PCGS graded MS62. Some bloom. *UNC/Ch.UNC*  
**\$600 - \$650**

312 1892S Jubilee Head Victoria. PCGS graded MS63. *Ch.UNC*  
**\$1200 - \$1400**

313 1894M Victoria Veiled Head. PCGS graded MS61. *UNC*  
**\$440 - \$460**

314 1895M Victoria Veiled Head. NGC graded MS 62. *UNC*  
**\$440 - \$460**

315 1896M Victoria Veiled Head. PCGS graded MS61. *UNC*

\$440 - \$460

316 1897M Victoria Veiled Head. PCGS graded MS62. *UNC*

\$440 - \$460

317 1898S Victoria Veiled Head. NGC graded AU 58. *gVF/aEF*

\$360 - \$380



318 1900S Veiled head Victoria. Scarce. *UNC*

\$2000 - \$2200

319 1901M Victoria Veiled Head. ICG graded MS62. *UNC*

\$440 - \$460

320 1902S Edward VII. NGC graded MS63. *UNC/Ch.UNC*

\$600 - \$650

321 1904M Edward VII. PCGS graded MS61. Soft bloom. *UNC*

\$450 - \$475

322 1907M Edward VII. PCGS graded MS62. *UNC*

\$480 - \$500

323 1907M Edward VII. NGC graded MS64. Soft mint bloom. *Ch.UNC*

\$850 - \$900

324 1907S Edward VII. NGC graded MS63. *UNC/Ch,UNC*

\$525 - \$550

325 1910S Edward VII. PCGS graded MS62. *UNC*

\$480 - \$500

326 1917P George V. ICG graded MS63. *UNC*

\$480 - \$500

327 1917S George V. NGC graded MS65. Sharp strike. *Ch,UNC/GEM*

\$900 - \$950

328 1919M George V. PCGS graded MS62. *UNC/Ch.UNC*

\$1100 - \$1200

329 1920P George V. *EF*

\$360 - \$380



330 1924S George V. PCGS graded MS62. Scarce. *UNC/Ch.UNC*

\$3500 - \$3600



331 1926P George V. PCGS graded MS62. Some mint bloom. Rare. *UNC/Ch.UNC*

\$2800 - \$3000

332 1930M Edward V. PCGS graded MS62. Mint bloom. *UNC/Ch.UNC*

\$600 - \$650

### Modern Australian Bullion Coins

333 Silver Kookaburra 1 kilo 1994. In clear perspex holder. *UNC*

\$650 - \$700

334 The Australian Gold 1oz Kangaroo 2011. *UNC*

\$1250 - \$1300

335 The Australian Gold 1oz Kangaroo 2011. *UNC*

\$1250 - \$1300



336 The Australian Gold 2oz Nugget 1995.  
*UNC*

\$2500 - \$2600



337 The Australian Gold 2oz Kangaroo 2004.  
*UNC*

\$2500 - \$2600

338 QE II Diamond Wedding Anniversary 2007  
1oz Gold Proof with a diamond embedded  
in Reverse. In box of issue with certificate.  
*FDC*

\$1400 - \$1500

First Prefix Australian Banknotes

Ten Shillings



339 1954 Coombs-Wilson AC/00. (R 16a).  
Consecutive pair. Crisp and fresh, with a  
few light bend folds. Scarce, especially as  
a pair. *EF*

\$2400 - \$2500

Five Dollar Note



340 1967 Coombs-Randall NAA (R 202F).  
Consecutive pair. Small stains, pencil  
notation one one note on edge, and light  
centre bend. *aU/UNC*

\$900 - \$950

341 1996 Polymer McFarlane-Evans BA 96 (R  
218aF). Consecutive pair. *UNC*

\$110 - \$120

Fifty Dollar Note

342 1973 Phillips-Wheeler YAA (R 505F). Hint of  
a bend. *aU/UNC*

\$400 - \$450



343 1973 Phillips-Wheeler YAA (R 505F). First  
prefix low numbered archive note, serials  
YAA 000 587. *aU/UNC*

\$600 - \$700

One Hundred Dollar Note

344 1984 Johnston-Stone ZAA (R 608F).  
Consecutive pair. *UNC*

\$650 - \$700

345 1984 Johnston-Stone ZAA (R 608F).  
Consecutive pair. *UNC*

\$650 - \$700

346 1984 Johnston-Stone ZAA (R 608F).  
Consecutive trio. *UNC*

\$950 - \$1000

Sets/Albums



347 1991 NPA Twenty Fifth Anniversary of Decimal Currency set and 1994 NPA Triple Anniversary set. Matched serial number set 000528. In black albums of issue, comprising 10 Shillings - 10 Pound last prefixes, and \$1, \$2, \$5, \$10, \$20, \$50 and \$100 First prefix low number issues. Set number 425 and 473 of 800 issued. Scarce as a matched number set. *aU/UNC*

\$4500 - \$4600

Assorted

348 2006 MacFarlane-Henry polymer \$5 BA 06 (R 220dF), \$10 AA 06 (R 320cF), \$20 AA 06 (R 420dF) & \$50 AA 06 (R 520dF) consecutive trios, all with final 4 digits matching. All first prefix. (12 notes total). *UNC*

\$400 - \$500

Last Prefix Australian Banknotes



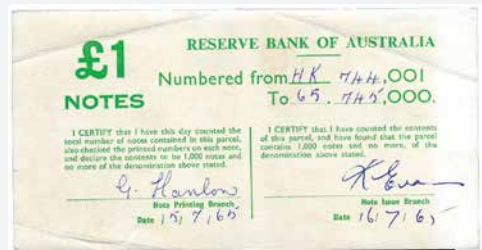
349 Ten Shillings. 1961 Coombs-Wilson AH/65 Circulation issue (R 17L). Consecutive pair. The much scarcer and more valuable issue from the last circulated prefix, as opposed to the NPA archive notes. Catalogues at \$7,000. *UNC*

\$3000 - \$3500



350 1961 Coombs-Wilson Last prefix AH 69 (R 17L). Tellers flick, fresh. Archive issue. *aU/UNC*

\$600 - \$700



351 One Pound. 1961 Coombs-Wilson HK/65 (R 43bL). Final circulating prefix issued. Consecutive pair, and comes with the original top hand numbered and signed bundle label. Very slight stain on edge of one note. Scarce. *UNC*

\$4500 - \$5000

One Dollar Note

352 1982 Johnston-Stone DPS (R 78L). Consecutive trio. *UNC*

\$120 - \$140

Twenty Dollar Note

353 1993 Fraser-Evans ADK (R 415L). Consecutive pair. *UNC*

\$140 - \$150



## Assorted

- 354 2006 MacFarlane-Henry polymer \$5 HB 06 (R 220dL), \$10 GL 06 (R 320cL), \$20 JC 06 (R 420dL) & \$50 JC 06 (R 520dL) consecutive trios, all with final 4 digits matching. All last prefix. (12 notes total). *UNC*
- \$425 - \$450

## Misprinted Australian Banknotes

## One Pound



- 355 1942. Large crease/flap running right along top of note, with design missing on crease on front. Ex IAG Sale 61, January 2005. A major error and very rare on such an early note issue. *VF*
- \$2200 - \$2400

## Two Dollar Note



- 356 1985. Missing 30% black print due to ink fade along top of note on front. *VF*
- \$300 - \$325



- 357 1985. Large corner flap, top left corner, with printers colour guide spots. Tear from printing. *EF*
- \$480 - \$500

## Five Dollar Note



- 358 1995. Partial triangle shaped wet ink transfer 30% on front, and missing black (simultan) print phase on back. Spectacular and rare. *gEF*
- \$2000 - \$2200



- 359 Twenty Dollar Note. N/D Polymer. Virtually unprinted blank note missing nearly all print phases, with checker stamped number 877433 in red across front. Rare, being the only such example I can recall seeing. *UNC*
- \$2000 - \$2200

## Fifty Dollar Note



- 360 1990. Missing all simultan (colour) print on Reverse. *aU/UNC*
- \$1600 - \$1800



361 1993. Heavy ink smudge on 30% of Back. *aUNC*

\$400 - \$450



363 1991. Intaglio shift 7-8mm to right on both sides. *gVF/aEF*

\$220 - \$240

## One Hundred Dollar Note



362 1985. Missing all simultan (colour) print and signatures on the front. *UNC*

\$1800 - \$2000



364 1996 polymer. Black wet ink smudge across significant parts of the front of note. *gEF*

\$220 - \$240

## Colonial Dumps and Holey Dollars



365 Dump Fifteen Pence 1813. Minor surface marks, some obverse damage and scratches, worn with only a minor trace of any lettering, but with a mostly visible crown. Rare. *POOR*

\$1000 - \$1200



366 Dump Fifteen Pence 1813 Type A/1. Traces of original host coin on Reverse, and all lettering visible, with good Crown. VG

\$4000 - \$4500



367 Holey Dollar 5 Shillings NSW 1813. Counterstamped on a Charles III Mexico Eight Reales 1800FM (Mira-Noble unlisted, dies I/1-A/7). Even wear with the countermark on Reverse more worn through slight dish of flan when struck, but with a good clear Obverse countermark. Very rare, and a nice mid grade example. FINE/gFINE

\$48000 - \$50000



368 Proof Halfpenny 1953. Some light toning with considerable mint red. Very scarce. *FDC*

\$6500 - \$7000



369 Proof Penny 1934. Full mint red with superb proof surfaces, sharp details and mint bloom. A superior example of this date, and very Rare as such. *FDC*

\$17000 - \$18000



370 Proof Penny 1953. Attractive old purple rainbow tone, and a superior example for the date. Sold originally as a pair with the 1953 Halfpenny above. Rare. *FDC*

\$7500 - \$8000



371 'Specimen' Shilling 1916. Sharply and fully struck details with a Proof-like strike and fields, and old natural toning with much underlying lustre. Rare. *aFDC*

\$15000 - \$16000



372 Proof Shilling 1934. A superior example of this date, with full wire rims and mirror unmarked proof fields and full bloom. Rare, especially this nice. *FDC*

\$18000 - \$20000



**373 Specimen Proof Florin 1914H.** Attractive old red and green irridescent gunmetal toning to full struck up details and clear surfaces. This coin has fantastic provenance being Ex the Birmingham Mint collection Spink Sale 15 March 1985, lot 721. Also Spink Sale 23 October 1987, lot 1505, the Parkhill Collection sale 46, November 1994, Nobles Sale 87 April 2008 (sold for \$192, 225) and IAG Sale 74 June 2011 (realised \$221,350). A brilliant coin and extremely rare, being one of only three known examples. *FDC*

**\$100000 - \$110000**



374 Proof Florin 1934. Good proof mirror fields for this issue, some light tone with brilliant mint bloom and a sharp rim. Very rare. *FDC*

\$18000 - \$20000



375 Proof Crown 1937. A beautiful example, nearly perfect in all respects with lovely mirror fields, and perhaps the best one of this date we have handled. Very rare. *FDC*

\$20000 - \$22000

## Australian Pre Decimal Coins II

### Halfpenny

376 1911. Mint red and brown. *UNC*

\$240 - \$280



377 1912. Full mint red. *Ch.UNC*

\$450 - \$500



378 1918 Key date. Mostly mint red lustre, well struck and a superb example. Rare in this grade. *UNC/Ch.UNC*

\$3500 - \$4000



382 1923. Key date. Nearly full band with hint of 7/8th Pearls. Brown with a reddish appearance, possibly once lightly cleaned, small knock and slight pitting, and taken into account as such. *gVF*

\$1800 - \$2200



379 1920. PCGS graded MS 64 RB. Virtually full mint red. *Ch.UNC/GEM*

\$1200 - \$1400



383 1930. Mostly brown with some traces of mint red. *UNC*

\$400 - \$450



380 1921. PCGS graded MS64RB. Mint red and brown. *Ch.UNC*

\$450 - \$500



384 1934. PCGS graded MS 64 RB. Virtually full mint red. *Ch.UNC/GEM*

\$750 - \$800



381 1923. Key date. PCGS graded VF 35, with 6 Pearls and most of center diamond. *VF*

\$1400 - \$1500



385 1940. Full bright mint red. Superb, and one of the finest of this date known. *GEM UNC*

\$600 - \$650

**Penny**

386 1911. Red and brown. *UNC*

\$260 - \$280





387 1911. Full blazing mint red. *GEM UNC*  
\$1800 - \$2000



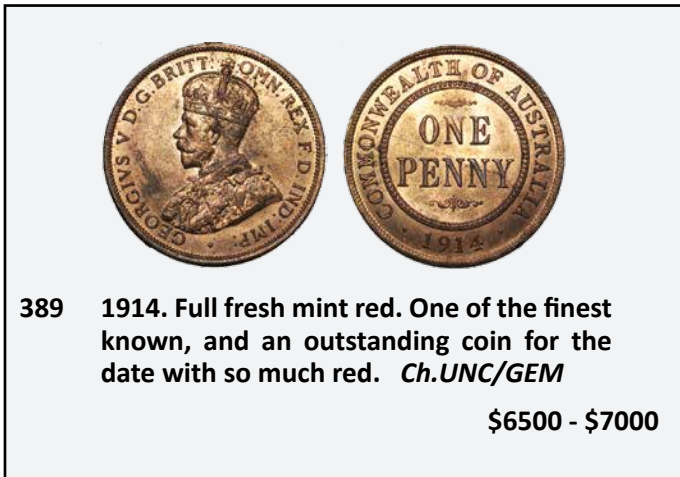
392 1919 plain. PCGS graded MS 64RB. Slightly streaky tone. *Ch.UNC*  
\$1500 - \$1600



388 1912. Well struck with mostly red tone. *Ch.UNC*  
\$800 - \$900



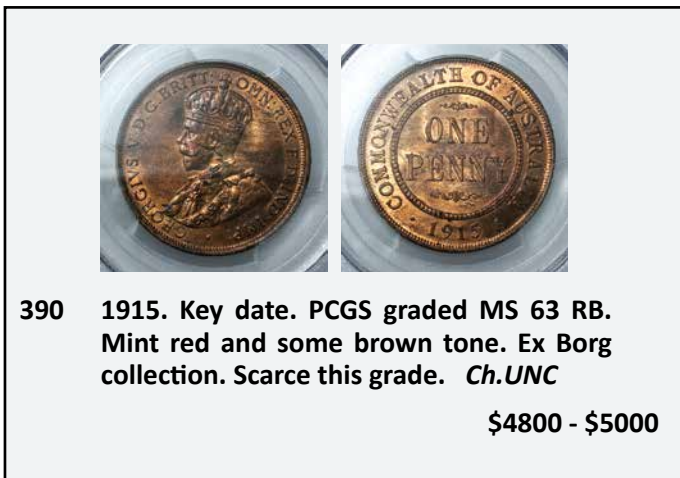
393 1920 Double Dot. 6 Pearls and most of Diamond. Scarce. *gVF*  
\$350 - \$400



389 1914. Full fresh mint red. One of the finest known, and an outstanding coin for the date with so much red. *Ch.UNC/GEM*  
\$6500 - \$7000



394 1920 Double Dot. Full band, well struck with clear dots visible, and with slightly porous surfaces on the Obverse. Rare in this grade, and amongst the finer known examples. *gEF*  
\$1700 - \$1800



390 1915. Key date. PCGS graded MS 63 RB. Mint red and some brown tone. Ex Borg collection. Scarce this grade. *Ch.UNC*  
\$4800 - \$5000



395 1920 Plain. Some patchy traces of red and brown with slightly uneven colour, but a good strike for this issue, particularly the Reverse. Very rare under estimated in high grade. Probably well into the top ten examples of this rare date known. *UNC*  
\$8000 - \$8500

391 1918l. Key date. Brown and red mint lustre. Well struck, and scarce this nice. *UNC*  
\$1800 - \$2000



396 1923. Attractive golden green tone and really well struck. A very tough date in this high grade. *Ch.UNC/GEM*

\$3600 - \$3800



399 1925. Key date. Well struck, even brown with some traces of mint red in crevices. A fantastic type example and rare in this grade. *UNC*

\$12000 - \$14000



397 1924. Subdued mint red and brown. *Ch.UNC*

\$900 - \$1000



400 1928. Mint red brown. *UNC/Ch.UNC*

\$1000 - \$1100



398 1925. Key date. Nearly full band. *aEF*

\$400 - \$450



401 1928. PCGS graded MS 62 RB. Fresh mint red with some minor Obverse tone, and a fully and sharply struck Reverse. Ex Borg collection. Scarce with nearly full colour, and arguably under graded, being amongst the finest known. *Ch.UNC*

\$3250 - \$3599



402 1930. Key date. Part centre diamond and 6 clear pearls. Well struck and a very good, even example. Rare. *gFINE*

\$15000 - \$16000



403 1931 Drop 1. PCGS graded AU 58. Brown. Scarce. *aUNC*

\$500 - \$550



408 1911. PCGS graded MS 64. Light tone and mint bloom. *Ch.UNC/GEM*

\$1000 - \$1100



404 1933. PCGS graded MS 63RB. Mostly mint red bloom. *Ch.UNC*

\$300 - \$350



409 1912. Light tone with some underlying mint bloom. *UNC*

\$1100 - \$1200



405 1946. Key date. Glossy mint brown and red, a few minor marks. *UNC*

\$1700 - \$1800



410 1918M. Full mint bloom. *Ch.UNC/GEM*

\$380 - \$400



406 1947Y. Red and brown. Scarce. *UNC*

\$500 - \$550



411 1918M. Old tone with mint bloom. *Ch.UNC/GEM*

\$380 - \$400

### Threepence



407 1911. Well struck with light tone and mint bloom. *Ch.UNC/GEM*

\$800 - \$900



412 1919. PCGS graded MS 63. Lightly toned original mint bloom. *Ch.UNC*

\$450 - \$475



413 1921 Plain. PCGS graded MS 64. Deep old tone with some underlying brilliance. Scarce date, especially in this grade. *Ch.UNC/GEM*

\$3000 - \$3200

414 1921M. PCGS graded MS 63. Light tone. *Ch.UNC*

\$200 - \$220



415 1923. Key Date. PCGS graded MS 62. Lustrous. Scarce this nice. *UNC/Ch.UNC*

\$1800 - \$2000



416 1925. Old tone with mint bloom. *UNC/Ch.UNC*

\$350 - \$400



417 1934/5 Overdate. Scarce. *aEF*

\$350 - \$400



418 1934. PCGS graded MS 63. Toned with mint bloom. *Ch.UNC*

\$325 - \$350



419 1936. PCGS graded MS 65. Old tone. *GEM UNC*

\$350 - \$400

## Sixpence

420 1910. Nice old tone and some mint bloom. *Ch.UNC*

\$350 - \$400



421 1911. Steel grey tone, well struck Obverse. *UNC*

\$800 - \$850



422 1917. PCGS graded MS 63. Toned, well struck. *Ch.UNC*

\$1300 - \$1400



423 1920M. Some original dark tone and well struck. Scarce. *Ch.UNC/GEM*

\$3200 - \$3400

424 1921. Frosty mint bloom. *UNC*

\$325 - \$350



425 1921. Old reddish tone. *Ch.UNC*

\$850 - \$900



426 1922. Weakly struck Advance Australia as usual, Obverse fully struck up. Scarce. *Ch.UNC*

\$3200 - \$3400



427 1922. NGC graded MS65. Sharply struck for this scarce issue, with usual orange peel surfaces, toned and with subdued bloom. Scarce. *Ch.UNC/GEM*

\$5800 - \$6000



428 1923. PCGS graded MS 63. Some bright mint bloom. *Ch.UNC*

\$1500 - \$1700



429 1923. PCGS graded MS 63. Light tone with bloom. *Ch.UNC*

\$1600 - \$1800



430 1926. Toned with some bloom. *Ch.UNC*

\$400 - \$450



431 1927. PCGS graded MS 63. Toned with mint bloom. *Ch.UNC*

\$400 - \$450

432 1928. Light tone, with some lustre. *UNC*

\$300 - \$325

433 1935. Good strike with some bloom, but with a small Reverse edge scrape, else choice. *UNC*

\$400 - \$450



434 1952. Scarce date. Die crack on Obverse and light steely tone. *UNC*

\$300 - \$350

435 1953. Well struck with bright mint bloom. *Ch.UNC*

\$325 - \$350

**Shilling**



436 1911. Well struck with some mint bloom. *ChUNC*

\$1500 - \$1600



437 1912. Toned with some mint bloom. *aUNC*

\$2000 - \$2200



438 1914. Mint lustre. *UNC*

\$650 - \$700



439 1915. Key date. *VF*

\$380 - \$400



440 1915H. Key Date. Toned with some lustre. Scarce. *aEF*

\$800 - \$900

441 1916. Mint bloom with light original tone. *UNC*

\$280 - \$300

442 1916. Old toned. *Ch.UNC*

\$325 - \$350



443 1916. PCGS graded MS 65. Superb red and green/blue tone with mint bloom. *GEM UNC*

\$1200 - \$1400



444 1917M. PCGS graded MS64. Toned. *Ch.UNC/GEM*

\$450 - \$500

445 1920. Light tone, with some lustre. *aUNC*

\$275 - \$300



446 1922. PCGS graded MS 62. Soft tone.  
*UNC/Ch.UNC*  
\$1000 - \$1200



451 1933. Key date. Light tone with mint bloom, well struck and sharp, but with a few surface marks. *aUNC*  
\$1700 - \$1800



447 1926. Light tone. *Ch.UNC*  
\$600 - \$650



452 1946 Double dot. Scarce. *UNC*  
\$300 - \$350



448 1927. Mint bloom with light original tone.  
*UNC/Ch.UNC*  
\$400 - \$450

Florin



453 1910. PCGS graded AU 58. Nice old tone.  
*aUNC*  
\$850 - \$900



449 1928. PCGS graded MS 62. Some Obverse tone. *UNC/CH.UNC*  
\$1400 - \$1500



454 1910. Reverse fully struck with brilliant mint bloom, a few minor marks. *UNC/Ch.UNC*  
\$2200 - \$2400



450 1933. Key date. PCGS graded AU 50. Light tone with some bloom. *gEF*  
\$1100 - \$1200



455 1911. Light tone with some original mint bloom. *UNC*  
\$1800 - \$2000



456 1912. Scarce date. A few minor marks.  
**UNC**

\$3250 - \$3500

457 1915. Key date. *gF/aVF*

\$180 - \$200

458 1915H. *aEF*

\$350 - \$400



459 1916. Toned with some mint bloom. **UNC**

\$1100 - \$1200



460 1916. A superior example with light tone and attractive mint bloom, fully struck up with only some minor marks. Scarce.  
**Ch.UNC/GEM**

\$4800 - \$5000



461 1917. Light peripheral tone and some lustre. **Ch.UNC**

\$1500 - \$1600



462 1919. Mint bloom and well struck, with a few marks and some Reverse scratching around the Star. **aU/UNC**

\$1800 - \$2000



463 1924. Well struck with nearly full mint bloom. **Ch.UNC**

\$2200 - \$2400



464 1926. Light tone. **UNC**

\$650 - \$700



465 1927. Brilliant bloom with light tone.  
**Ch.UNC/GEM**

\$1100 - \$1200



466 1927 Canberra. PCGS graded MS 65. Lovely old tone with underlying mint bloom. **GEM UNC**

\$300 - \$350





467 1931. Mint bloom. *ChUNC*

\$325 - \$350



471 1934/5 Melbourne Centenary. With old Foy's bag, a bit worn and taped in middle from tears. *UNC*

\$600 - \$650



468 1932. Key date. Old Obverse tone from a push in album. Nearly full band. *gVF*

\$750 - \$800



469 1933. Well struck. *EF/gEF*

\$900 - \$950



472 1934/5 Melbourne Centenary. Prooflike finish with nearly full wreath. *Ch.UNC*

\$600 - \$650



470 1934. Light tone and mint bloom. *UNC*

\$650 - \$700



473 1934/5 Melbourne Centenary. PCGS graded MS64. Toned with bloom. *Ch.UNC/GEM*

\$700 - \$750

## CONSIGNMENTS:

Consignments for our next auction, Sale 81 in March 2015 close mid to late January 2015.

Contact us now to make sure that you dont miss out.



474 1934/5 Melbourne Centenary. PCGS graded MS 64. Toned. *ChUNC/GEM*

\$700 - \$750



475 1934/5 Melbourne Centenary. PCGS graded MS 64. Toned with a virtually full wreath. *Ch.UNC/GEM*  
\$700 - \$750



480 1939M. PCGS graded MS63. Attractive light tone and mint bloom. Scarce this nice. *Ch.UNC*  
\$2800 - \$3000



476 1934/5 Melbourne Centenary. PCGS graded MS65. Toned with soft bloom. *GEM UNC*  
\$1800 - \$2000

**Crown**



481 1938. PCGS graded AU 58. Toned. *aUNC*  
\$325 - \$350



477 1935. Old orange tone with some mint bloom. *UNC/Ch.UNC*  
\$900 - \$1000



482 1938. Uneven, somewhat unattractive tone on Obverse, but mostly mark free. *aU/UNC*  
\$400 - \$450



478 1935. PCGS graded MS 64. Old tone with mint bloom. *Ch.UNC/GEM*  
\$1100 - \$1200

**Australian Pre Decimal Proof Coins**

479 1936. Light tone with prooflike strike and mint bloom. *Ch.UNC*  
\$350 - \$400

483 Proof Halfpenny 1961. NGC graded PF 65RD. *FDC*  
\$600 - \$700

484 Proof Halfpenny 1963Y. PCGS graded PR 64 RD. Toned. *FDC*  
\$220 - \$240



485 Proof Penny 1956Y. Full perfect mint red, and perhaps the best of this date we have sold. Rare. *FDC*

**\$7000 - \$7500**

486 Proof Penny 1957Y. PCGS graded PR 64 RB. Toned. *FDC*

**\$240 - \$250**



487 Proof Penny 1957Y. PCGS graded PR 64RD. *FDC*

**\$900 - \$1000**



488 Proof Penny 1958Y. PCGS graded PR 65 RD. *FDC*

**\$600 - \$650**



489 Proof Penny 1959Y. PCGS graded PR 66 RD. Some light tone. *FDC*

**\$600 - \$650**

490 Proof Penny 1960Y. Light tone. *FDC*

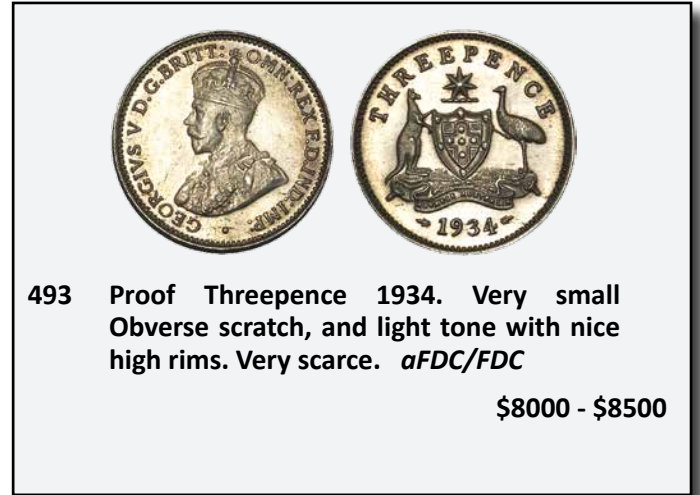
**\$280 - \$300**

491 Proof Penny 1963Y. PCGS graded PR 66RD. *FDC*

**\$900 - \$1000**

492 Proof Halfpenny and Penny pair 1960Y. Light tone, a few minor tone spots. *FDC*

**\$500 - \$550**



493 Proof Threepence 1934. Very small Obverse scratch, and light tone with nice high rims. Very scarce. *aFDC/FDC*

**\$8000 - \$8500**

494 Proof Threepence 1956. PCGS graded PR 66. *FDC*

**\$270 - \$280**

495 Proof Sixpence 1956. PCGS graded PR 67. Red and green toned. *FDC*

**\$600 - \$700**

496 Proof Sixpence 1962M. PCGS graded PR 66. *FDC*

**\$200 - \$250**

497 Proof Shilling 1962M. PCGS graded PR 66. *FDC*

**\$220 - \$240**

498 Proof Florin 1962M. PCGS graded PR 66. Some tone. *FDC*

**\$240 - \$260**

499 Proof set of 4 1955. All PCGS graded, Penny PR 63RD, Threepence PR 65, Sixpence PR 64, Shilling PR 65. Light tone to silver. (4 coins total). *FDC*

**\$1000 - \$1100**



500 Proof set of 5 1956M. Penny to Florin. Slight tone to Penny. *FDC*  
\$800 - \$850

501 Proof set of 3 coins 1957M. PCGS graded PR 65. Some tone. (3 coins total). *FDC*  
\$750 - \$800

502 Proof set of 5 1958M. Penny to Florin. *FDC*  
\$1000 - \$1100

503 Proof set of 4 coins 1960M. All PCGS graded. Threepence PR 66 (toned), Sixpence PR 66, Shilling PR 66 (toned), Florin PR 66. Some tone. (4 coins total). *FDC*  
\$800 - \$850

504 Proof set of 4 coins 1961M. All PCGS graded. Threepence PR 66, Sixpence PR 66, Shilling PR 66, Florin PR 66. Some toning. (4 coins total). *FDC*  
\$800 - \$900



505 Proof Silver Set of 4 1962M. Threepence to Florin. PCGS graded PR 66, PR 65, PR 66 and PR 66. *FDC*  
\$900 - \$1000

Unofficial Patterns, Restrikes & Forgeries



506 Kookaburra Halfpenny Type 1 dated 1920 struck in copper. High quality Copy struck in small numbers by notorious forger David Gee. *UNC*  
\$300 - \$350



507 Silver Goose Dollar 1967. Milled edge type. NGC graded MS 64. Light gunmetal blue tone. *CH.UNC/GEM*  
\$1400 - \$1500

Internment Camps



508 Penny Internment Camp WW II. PCGS graded genuine. Some lustre. Ex Borg collection. *UNC*  
\$180 - \$200



509 Penny Internment Camp WW II. Mint lustre. Scarce. *Ch.UNC*  
\$280 - \$300



- 510 Threepence Internment Camps Token WWII. Nearly full mint red. *Ch.UNC*  
\$220 - \$240



- 511 Shilling Internment Camps Token WWII. Brown. *gVF*  
\$300 - \$320



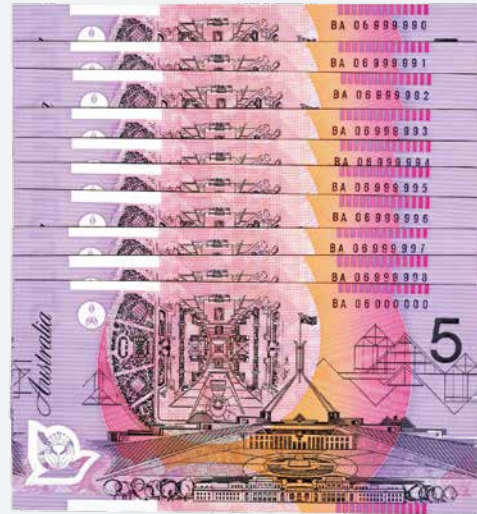
- 512 Two Shillings Internment Camps Token WWII. Mostly mint red. Scarce. *UNC*  
\$1400 - \$1500

Interesting Serial Numbered Banknotes

One Dollar Note

- 513 1966. Coombs-Wilson repeater number. Serials AEF 717171. Early repeater note. *aUNC*  
\$70 - \$80

Five Dollar Note



- 514 2006 MacFarlane/Henry One millionth note issue. BA06 first prefix with solid 000000 serial numbers. **UNIQUE**. This is the one millionth 'test sheet' note in the print run. Prior to 1976 the serial numbering for the millionth note was done by hand, with the number 1 added after the serial number was printed. Current convention is for serial numbering to start at 000000 and count backwards from 999999 to 000001 with the millionth sheet numbered 000000 pulled aside and destroyed (or sold as charity sheets). In 2006 the millionth sheet with 000000 serial numbered notes were accidentally issued into circulation. This note, with accompanying run of semi solid notes BA06 999998/999990 comes from the original bundle issued into circulation. BA 06 999999 was not found in the bundle and it is assumed it was faulty and destroyed, which is common as the printing press is not fully inked at start of printing runs. With the lot below, the only examples we have seen. (10 notes in total) *UNC*  
\$6000 - \$7000

**WANTED: RARITIES AND HIGH QUALITY LOTS FOR OUR IMPORTANT 30th ANNIVERSARY AUCTION, SEPT. 2015 CONTACT US NOW FOR FURTHER DETAILS.**



515 2006 MacFarlane-Henry One millionth note BE 96 000000. The 'Specimen' note from the top 'test' sheet that is the Millionth numbered note in sequence as detailed above. From an original bundle as found in circulation (not from an uncut NPA sheet). With the consecutive \$5 note BE 96 999999 solid numbers that is often damaged during production. The only other Polymer Decimal issue from circulation we have seen, and one of only a few such notes known. Extremely Rare. (2 notes in total). *UNC*

\$8000 - \$8500



516 2007 polymer Stevens-Henry (R 221). Serials AI 07 000 000. From an uncut 'Specimen' sheet. Scarce. *UNC*

\$1700 - \$1800

## Twenty Dollar Note



517 2005 polymer McFarlane-Henry (R 420c). Serials BI 05 000 000. From an uncut 'Specimen' sheet. Scarce. *UNC*

\$1700 - \$1800

## Fifty Dollar Note



518 2004 polymer McFarlane-Henry (R 520b). Serials BM 04 000 000. From an uncut 'Specimen' sheet. Scarce. *UNC*

\$1800 - \$2000

## Radar Serial Number Notes

### Ten Shillings

519 1961. Radar serial numbered note. Serials AG/64 227722. Good paper with folds. *gFINE*

\$120 - \$140

### One Dollar Note

520 1966. Coombs-Wilson. Serials ACH 536635. Early radar note. *aUNC*

\$70 - \$80

### Ten Dollar Note

521 1993. Radar serials MKT/U 894498. (2 notes total). *UNC*

\$70 - \$80

### Fifty Dollar Note

522 1993. Radar serial numbered notes with consecutive prefixes. Serials WTG/H 983389. (2 notes total). *UNC*

\$220 - \$240

## Australian Solid Serial Numbered Banknotes

### One Pound

- 523 1953 Coombs-Wilson. Serials HC/48 999999. Dirty and worn. Scarce VG  
\$350 - \$400



- 524 1961 Coombs-Wilson. Serials HJ/21 777777. A little dirty and worn. FINE  
\$350 - \$400

### Five Dollar Note

- 525 2006 polymer. Solid serials BB 06 777777. UNC  
\$200 - \$220

- 526 2006 polymer. Solid serials BD 06 777777. UNC  
\$200 - \$220



- 527 2006 polymer. Solid serials CA/CB 06 777777. Pair of consecutive prefixes, both with matching solid numbers. UNC  
\$400 - \$440

### Ten Dollar Note



- 528 2006 polymer. Solid serials CB/CC 333333. Pair of consecutive prefixes, both with matching solid numbers. UNC  
\$400 - \$440

- 529 2006 polymer. Solid serials CL/CM 333333. Pair of consecutive prefixes, both with matching solid numbers. UNC  
\$400 - \$440

### Twenty Dollar Note

- 530 2006 polymer. Solid serials CD 06 333333. UNC  
\$220 - \$240

### Fifty Dollar Note

- 531 1979. Solid serials YDG 555555. aUNC  
\$300 - \$350

### One Hundred Dollar Note



- 532 1985. Solid serials ZCJ 999999. Scarce. aUNC  
\$400 - \$450

## One Dollar Note

- 533 1967 Coombs-Randall (R 72). Centre fold, flick. *gEF*  
\$90 - \$100



- 534 1967 Coombs-Randall (R 72). Fresh consecutive pair. Scarce. *UNC*  
\$850 - \$900

- 535 1972 Phillips-Wheeler (R 74). Consecutive trio, centre fold, flick. Also 1976 Knight-Wheeler (R 76c) Side thread. (4 notes total). *gEF-UNC*  
\$70 - \$80

- 536 1976 Knight-Wheeler DBP 'test note' (R 76b). *UNC*  
\$90 - \$100

- 537 1976 Knight-Wheeler (R 76c) Side thread. Consecutive pair. Also 1979 Knight-Stone (R 77). Consecutive pair, 1982 Johnston-Stone (R 78). Consecutive trio. (7 notes total). *EF-UNC*  
\$40 - \$50

## Two Dollar Note

- 538 1966 Coombs-Wilson (R 81). Consecutive pair, also 1968 Phillips-Randall (R 83). Consecutive run of 5. Centre bend. (7 notes total). *aUNC*  
\$110 - \$120

- 539 1967 Coombs-Randall (R 82). Trace of light handling. *aU/UNC*  
\$100 - \$110

- 540 1972 Phillips-Wheeler (R 84). Consecutive trio. Centre fold. Also 1974 Phillips-Wheeler (R 85). Consecutive pair. centre fold. (5 notes total). *aUNC*  
\$120 - \$140

- 541 1976 Knight-Wheeler (R 86c). OCR-B Side thread. Consecutive trio, pair and single. Centre fold. (6 notes total). *aUNC*  
\$90 - \$100

- 542 1979 Knight-Stone (R 87). Two Consecutive pairs. Centre bends. (4 notes total). *aU/UNC*  
\$40 - \$50

- 543 1983 Johnston-Stone (R 88). Single, and Consecutive run of 6. Also 1985 Johnston-Fraser (R 89). Consecutive pair. Centre fold. (9 notes total). *gEF/aUNC*  
\$30 - \$40

## Five Dollar Note

- 544 1967 Coombs-Randall (R 202). Light flick. *UNC*  
\$180 - \$200

- 545 1969 Phillips-Randall (R 203). Also 1972 Phillips-Wheeler (R 204). (2 notes total, both with centre folds), and 1974 Phillips-Wheeler (R 205). Consecutive run of 4. Centre fold. (7 notes total). *EF-aUNC*  
\$220 - \$240

- 546 1976 Knight-Wheeler gothic (R 206a). Centre thread. Consecutive trio. Centre fold. Also 1976 Knight-Wheeler gothic (R 206b). Side thread. Also OCRB (R 206c). Side thread. Pinhole. (2 notes total) and 1976 Knight-Wheeler OCRB (R 206c). Side thread. Consecutive pair. Centre fold. (7 notes total). *EF-aUNC*

- \$80 - \$100

- 547 1979 Knight-Stone (R 207). Consecutive pair. Centre fold. Also 1985 Johnston-Fraser (R 209a). Consecutive trio. Centre fold and 1985 Johnston-Fraser OCR-B (R 209a). Consecutive run of 4. (9 notes total). *aUNC*  
\$110 - \$120

- 548 1983 Johnston-Stone (R 208). Consecutive pair. *UNC*  
\$45 - \$50



## Ten Dllar Note

- 549 1966 Coombs-Wilson (R 301). Also 1967 Coombs-Randall (R 302), 1968 Phillips-Randall (R 303) 2 notes, 1972 Phillips-Wheeler (R 304). (5 notes total). *aVF-EF*  
\$80 - \$90
- 550 1967 Coombs-Randall (R 302). Light handling. *aU/UNC*  
\$200 - \$220
- 551 1968 Phillips-Randall (R 303). Also 1974 Phillips-Wheeler (R 305). Consecutive pair. Centre bend. (3 notes total). *gEF-UNC*  
\$180 - \$200
- 552 1976 Knight-Wheeler (R 306b). Consecutive run of 4 and pair. Centre fold. (6 notes total). *gEF-aUNC*  
\$160 - \$180
- 553 1979 Knight-Stone gothic (R 307a). Consecutive pair, also 1979 Knight-Stone OCR-B (R 307b). (3 notes total). *aU-UNC*  
\$120 - \$140
- 557 1974 Phillips-Wheeler (R 405). Consecutive pair. *aU/UNC*  
\$350 - \$400
- 558 1976 Knight-Wheeler gothic (R 406a). Consecutive run of 5. Centre folds. *gEF-aUNC*  
\$350 - \$400
- 559 1976 Knight-Wheeler gothic (R 406b). Also 1979 Knight-Stone gothic (R 407a). Consecutive run of 5. Centre folds. (6 notes total). *gVF-gEF*  
\$250 - \$275
- 560 1979 Knight-Stone gothic (R407a). Consecutive run of four. *UNC*  
\$240 - \$250
- 561 1979 Knight-Stone OCR-B (R 407b). Centre fold. Also 1985 Johnston-Fraser OCR-B (R 409a). (2 notes total). *gEF/UNC*  
\$120 - \$140

## Twenty Dollar Note

- 554 1966 Coombs-Wilson (R 401). Consecutive run of 7. Centre bend. *gEF-aUNC*  
\$240 - \$250



- 555 **1967 Coombs-Randall XBQ (R 402F).** One with heavy folds, the other slightly trimmed on R/H edge. (2 notes total). *gFINE/aEF*  
\$400 - \$450
- 556 1968 Phillips-Randall (R 403). (3 notes). Also 1972 Phillips-Wheeler (R 404). (2 notes) and 1974 Phillips-Wheeler (R 405). (6 notes total). *FINE-gEF*  
\$180 - \$200
- 562 **1983 Johnston-Stone (R 408).** Consecutive run of 5. *UNC*  
\$850 - \$900



## Fifty Dollar Note

- 563 1973 Phillips-Wheeler (R 505). Corner bend. *aU/UNC*  
\$180 - \$200
- 564 1976 Knight-Wheeler (R 506a). Centre thread. *UNC*  
\$180 - \$200
- 565 1976 Knight-Wheeler (R 506b). Side thread. Also 1979 Knight-Stone (R 507). Consecutive pair. Centre bend and flicks. (3 notes total). *gEF-aUNC*  
\$300 - \$320

566 1983 Johnston-Stone (R 508). Consecutive pair. Also 1985 Johnston-Fraser (R 509a) Gphic. (3 notes total). *EF-aUNC*  
\$280 - \$300

### One Hundred Dollar Note

567 1984 Johnston-Stone (R 608). Consecutive pair. Flicks and slight handling. *aUNC*  
\$300 - \$320

568 1985 Johnston-Fraser (R 609). Also 1990 Fraser-Higgins (R 612). (2 notes total). *UNC*  
\$325 - \$350

### Sets/Albums

569 Type set of decimal Paper notes, \$1 to \$100. Includes \$1 1979 Knight-Stone, \$2 1983 Johnston-Stone, \$5 1991 Fraser-Cole, \$10 1991 Fraser-Cole, \$20 1994 Fraser-Evans, \$50 1993 Fraser-Evans, \$100 1985 Johnston-Fraser. (7 notes total). *UNC*  
\$380 - \$400

### Mistruck Error Coins

### Halfpenny



570 1942I. Full strong Reverse brockage strike, and also slightly off centre Reverse. Traces of mint red. Rare. *EF*  
\$2000 - \$2200

### Penny



571 1938. Double struck flip over error. *aVF*  
\$240 - \$250



572 1940 K.G. Off centre strong double strike on both sides. A spectacular and rare error, especially on this date. *gVF*  
\$700 - \$800



573 1950Y. Large off centre 5.5mm slightly raised rim lip. Scarce. *gVF*  
\$500 - \$550

574 1964. 4mm off centre raised rim lip. *UNC*  
\$200 - \$220

### Threepence



575 1934. Partial Obverse brockage with planchet break. *FINE*  
\$200 - \$220

576 1950. Struck off centre 2mm rim lip. *gVF*  
\$70 - \$80

## Sixpence



- 577 1950 Broadstrike collar error spread flan. Wide flan error with large, flat rim. Scarce. *Ch.UNC*

\$600 - \$700

- 578 1963. Off centre 2mm slightly raised rim lip. In nice grade. *Ch.UNC*

\$200 - \$220

## Shilling

- 579 1952. Off centre 1.5mm slightly raised rim lip. *aUNC*

\$150 - \$160



- 580 1959. Struck off centre 20% rim lip. *Ch.UNC*

\$280 - \$300

## One Cent



- 581 1987. Struck out of collar, off centre wide rim lip, with rippled surface on Obverse and appearance of doubling of Portrait. Mint red. Scarce. *aUNC*

\$300 - \$350

## Two Cent



- 582 N/D. Double struck with 30% partial design on both sides, struck off centre. PCGS graded MS 65RB. Scarce, especially in this grade. *UNC*

\$1500 - \$1600

## Five Cent

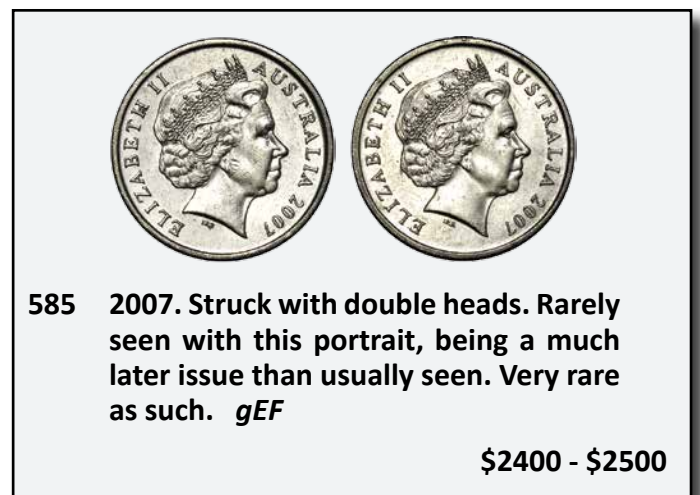


- 583 1969. Struck through Obverse causing only partially struck up Reverse. Scarce, especially in such nice grade for the date. *Ch.UNC*

\$1500 - \$1600

- 584 2003. Struck 20%+ off centre rim lip. PCGS graded MS 64. Scarce this grade. *Ch.UNC*

\$400 - \$450



- 585 2007. Struck with double heads. Rarely seen with this portrait, being a much later issue than usually seen. Very rare as such. *gEF*

\$2400 - \$2500

## Ten Cent

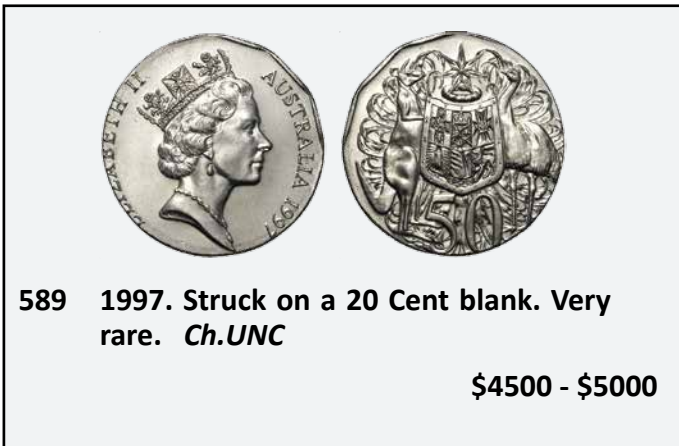


586 1994. Struck on a 5 Cent blank. Very rare. *Ch.UNC*  
\$2400 - \$2500

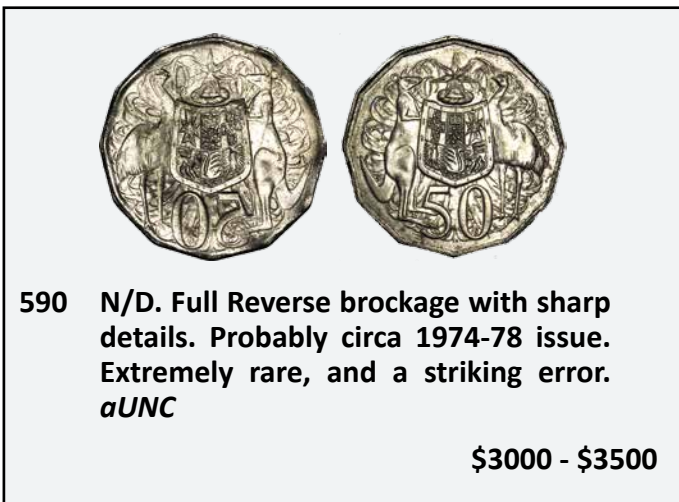
587 2003. Broadstruck out of collar, off centre rim lip. PCGS graded MS 65. Scarce this grade. *GEM UNC*  
\$400 - \$450

## Fifty Cent

588 1980. Slipped collar during striking, with several raised rim protrusions on Reverse. Obverse scratch. *EF*  
\$200 - \$220



589 1997. Struck on a 20 Cent blank. Very rare. *Ch.UNC*  
\$4500 - \$5000



590 N/D. Full Reverse brockage with sharp details. Probably circa 1974-78 issue. Extremely rare, and a striking error. *aUNC*  
\$3000 - \$3500

## World Banknotes

591 Peru Intis notes, assorted dates, grades and denominations. All pre 1991, when all existing currency was replaced by the Peruvian Nuevo Sol (New Sun) at 100 to 1. Historically significant. (3,230,000 FV). (23 notes total). *VG-aFINE*  
\$10 - \$20

592 Reserve Bank of New Zealand 10 Pounds Hanna (1940-1955). (P 161a). *gVF*  
\$375 - \$400



593 Reserve Bank of New Zealand 50 Pound Specimen, Hanna. Unissued Specimen no 36. Stamped 'Specimen Cancelled' by De La Rue & Co, with the specimen no hand written in ink. Rare. *UNC*  
\$1400 - \$1500

## Medals & Medallions



594 Adelaide Exhibition Award Gold medal 1881 (15.46 grams) 29.5mm. Small test cut in edge. Rare. Also bronze medal Melbourne International Exhibition (76mm) 1880 to the same recipient, British Syphon Manufacturing Co. and inscribed as such. (2 items total). *EF*  
\$1900 - \$2000



595 Captain Cook 1772 George III Resolution and Adventure medal. Struck in platina (brass), 44mm by B.F. (Matthew) Boulton for Joseph Banks. Some surface pitting and with suspension loop missing. Rare. *FINE*

\$3250 - \$3500



596 Captain James Cook Royal Society medallion in bronze. By L. Pingo 43mm. Nice even dark brown with some mint red. Scarce. *UNC*

\$1200 - \$1300



597 London International Exhibition 1862 London. Struck in silver. 64mm. Designed by JS & AB Wyon, London. Beautifully toned. The Obverse is a 6 petal flower containing a representation of Australian flora. Identifiable are the banksia, waratah, wattle and gum leaves. Around the perimeter are the words 'INTERNATIONAL EXHIBITION. LONDON 1862 PRODUCTS OF QUEENSLAND'. On the Reverse is a seated Britannia receiving gifts of fruit, grain and wool (sheep) from a delegation of 4 from Queensland. Behind Britannia is an Exhibition building & below the scene depicted are the words 'Queensland offers her first fruits to Britain'. Above the scene are the words 'PULCHRA TE PROLE PARENTUM', meaning 'Beautiful is the product of the producer'. Apparently the medal was given to an exhibitor as a prize from the Queensland Government for a worthy exhibit. In original box of issue in good condition. Scarce. *UNC*

\$1800 - \$2000



598 Nobel Silver Medallion for Medicine Sweden 1960 (see Gold medal for details). Swedish Royal Academy of Sciences. Weight 11.20g Diameter 27mm. This medallion is believed to have been presented to one of the participants in the selection process for the Nobel laureate(s). The Nobel Prize in The Nobel Prize in Physiology or Medicine 1960 was awarded jointly to Sir Frank MacFarlane Burnet and Peter Brian Medawar 'for discovery of acquired immunological tolerance'. *UNC*

\$400 - \$500



599 Nobel Silver Medallion for Medicine Sweden 1969 (see Gold medal for details). Swedish Royal Academy of Sciences. Weight 11.20g Diameter 27mm. This medallion is believed to have been presented to one of the participants in the selection process for the Nobel laureate(s). The Nobel Prize in Physiology or Medicine 1969 was awarded jointly to Max Delbrück, Alfred D. Hershey and Salvador E. Luria 'for their discoveries concerning the replication mechanism and the genetic structure of viruses. Scarce. *UNC*

\$400 - \$500



600 Nobel Gold Medallion for Physics Sweden 1970. King Gustav V. Swedish Royal Academy of Sciences. Weight 20.26g Diameter 27mm. Obverse: Bust of Nobel left, name to left, date of birth and death to right. Reverse: The symbol of the Royal Academy of Sciences, a crowned globe with the three crowns [Sweden's coat of arms], surrounded by two wings, above the radiant Northern star. Below the inscription REG[ia] - ACAD[emia] - SCIENT[iarum] - SVEC[iae] - (=The Royal Swedish Academy of Sciences). This medallion is believed to have been presented to one of the participants in the selection process for the Nobel laureate(s) in physics for 1970. The Nobel Prize is widely regarded as the most prestigious award available in the fields of literature, medicine, physics, chemistry, peace, and economics. The winners are selected by committee, with the committee for physiology or medicine meeting with the Nobel Assembly of that Institute, and consisting of up to 50 professors, and on that occasion they and the committee members receive the medallions in silver. If further meetings are found necessary, they again receive the medallion in silver. At the final voting in October they are all handed the same medallion, but now in silver gilt. All other classes: The three committees of the Royal Academy of Sciences present their suggestions at a meeting involving their respective 'classes' (physics, chemistry, and economic sciences). At a second meeting, the committee members receive one medalet in silver gilt, then when the final decisions are taken by the Academy 'in corpore', everyone present receives one medallion in silver gilt for each of the three prizes. Up to 1979 the final medallions were struck in 23 carat gold, since 1980 they have been struck in either silver or silver gilt as presentations in Gold were abandoned in 1980 when the Swedish taxation authorities pointed out that those who received it ought to be assessed for taxes. Selection committee members that have been present at the meetings for some years can apparently exchange ten of the silver/silver gilt medallions for one in gold. Since the Academy only has 18 members, and it is seldom that all members are present, this medalet in Gold has been struck in a very small number. The Nobel Prize for Physics in 1970 was divided equally between Hannes Olof Gösta Alfvén 'for fundamental work and discoveries in magnetohydro-dynamics with fruitful applications in different parts of plasma physics' and Louis Eugène Félix Néel 'for fundamental work and discoveries concerning antiferromagnetism and ferrimagnetism which have led to important applications in solid state physics'. Very rare. *aUNC/UNC*

\$5500 - \$6000



601 Queen Victoria Silver Exhibition Medal  
Calcutta International Exhibition 1883-4  
51mm. Unattributed. *UNC*

\$325 - \$350

## Postal Bidders:

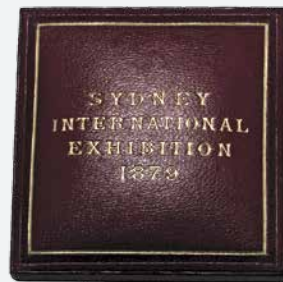
Bids for this sale can be submitted by:  
Email, Fax, Online Forms or via our  
Live Online Bidding with a valid account

[www.iagauctions.com](http://www.iagauctions.com)



602 Sydney International Exhibition, Sydney NSW 1879. Struck in silver, 75mm. Presented to Monsier Mathieu, Commissioner General of France. Obverse shows a female holding a wreath in right hand & a resting shield with coat of arms thereon. In the background is an exhibition building and in the foreground a variety of items including a violin, hammer, bricks, anvil, anchor, gear wheel, books, artist palette, urns and a machine governor. The wording above the scene is 'ORTA RECENS QYAM PURA NITES'. Around the perimeter are the words 'INTERNATIONAL EXHIBITION SYDNEY NSW M.D.CCC.LXXXIX'. The Reverse has a floral wreath of native flowers and has the inscription 'A.F. Mathieu for Services'. In original box of issue in good condition. Rare. A pair to the following lot. *UNC*

\$1400 - \$1500



603 Sydney International Exhibition 1879, Sydney NSW 1879. Struck in gold, 50mm. Presented to Monsier Mathieu, Commissioner General of France. Obverse shows a female holding a wreath in right hand & a resting shield with coat of arms thereon. In the background is an exhibition building and in the foreground a variety of items including a violin, hammer, bricks, anvil, anchor, gear wheel, books, artist palette, urns and a machine governor. The wording above the scene is 'ORTA RECENS QYAM PURA NITES'. Around the perimeter are the words 'INTERNATIONAL EXHIBITION SYDNEY NSW M.D.CCC.LXXXIX'. The Reverse has a floral wreath of native flowers with the inscription 'Captain AF, Mathieu Commissioner General of France for his very distinguished services'. In original box of issue in good condition. Rare. A pair to the previous lot. *UNC*

\$9500 - \$10000

### Australian Tokens

604 Half Penny 1863 D.T Mulligan. Rockhampton. (R 388/A 393) and (389/A 394). Rarity 3/4. Scratches. (2 coins). *F/gFINE*

\$60 - \$70

605 Half Penny and Penny 1865 John Pettigrew and Co. Ipswich. (R 428/A 438) and (429/A 439). Rarity 4/2. (2 coins). *F/VF*

\$100 - \$120

606 Penny Brookes. Brisbane. (R 58/A 47). Rarity 4. *gFINE*

\$90 - \$100

607 Penny Flavelle Bros and Co. Sydney and Brisbane. (R 135/A 125). Rarity 3. *gFINE*

\$70 - \$80

608 Penny 1863 Merry and Bush Qld. Toowoomba. (R 359/A 367). Rarity 4. *gVF*

\$120 - \$140



- 609 Penny T.F Merry and Co. Toowoomba. (R 358/A 366). Edge knocks. Rarity 7. Rare. *aVF*  
\$300 - \$350
- 610 Penny T.F Merry and Co. Toowoomba. (R 359/A 367). Rarity 3. *gVF*  
\$120 - \$140
- 611 Penny T.F Merry and Co. Toowoomba. (R 359/A 367). Traces of lustre. Rarity 3. *EF*  
\$200 - \$220
- 612 Penny J. Sawyer. Brisbane. (R 461/A 469). Rarity 2. One with small dig. (2 coins). *F/gFINE*  
\$40 - \$50

### Miscellaneous Australian Banknotes

### Ten Shillings



- 613 1928 Riddle-Heathershaw (R 7). Pinholes plus internal holes/tears. Ink stains on bottom edge. *VG/aFINE*  
\$180 - \$200
- 614 1934 Riddle-Sheehan (R 10). Red overprint type. Dirty. *VG*  
\$220 - \$240
- 615 10 Shillings 1939 (R 12), 1 Pound 1953 (R 33), 5 Pounds 1954 Coombs-Wilson (R 49) one note early prefix TA/84 (2 notes). (4 notes total). *GOOD-aFINE*  
\$60 - \$70

- 616 1939 Sheehan-McFarlane (R 12). *aEF/EF*  
\$300 - \$350
- 617 1954 Coombs-Wilson (R 16). Also One Pound 1952 Coombs-Wilson (R 32) & 1953 Coombs-Wilson (R 33). (3 notes total). *FINE*  
\$70 - \$80
- 618 1954 Coombs-Wilson (R 16). *gEF*  
\$100 - \$110

### One Pound

- 619 1938 Sheehan-McFarlane (R 29). *EF*  
\$270 - \$280
- 620 1942 Armitage-McFarlane (R 30a). *gEF*  
\$90 - \$100
- 621 1942 Armitage-McFarlane (R 30b). *EF*  
\$90 - \$100
- 622 1942 Armitage-McFarlane (R 30b), 1961 Coombs-Wilson (R 34b) (2 notes). (3 notes total). *gVF-aUNC*  
\$110 - \$120
- 623 1949 Coombs-Watt (R 31). Slight stain. *EF*  
\$90 - \$100
- 624 1961 Coombs-Wilson (R 34b). (3 notes total). *gF-EF*  
\$140 - \$150

### Five Pound

- 625 1941 Armitage-McFarlane (R 46). Folds. *aVF*  
\$150 - \$160
- 626 1949 Coombs-Watt (R 47). Crisp, folds. *aVF*  
\$140 - \$150
- 627 1954 Coombs-Wilson (R 49). (2 notes). *gVF/aEF*  
\$90 - \$100



## Ten Pound

- 628 1960 Coombs-Wilson (R 63). *EF*  
\$180 - \$200

## One Dollar Note

- 629 1966 Coombs-Wilson (R 71), 1969 Phillips-Randall (R 73) (2 notes), also 1972 Phillips-Wheeler (R 74) & 1979 Knight-Stone (R 77). Folds. (5 notes total). *aVF-gEF*  
\$20 - \$30

## Ten Dollar Note

- 630 NPA 1997 Uncut vertical pair. In folder of issue. Number 0287 red serials. *UNC*  
\$60 - \$70

## Twenty Dollar Note

- 631 1991. Gold serial consecutive prefix low numbered pair. Serials E 000025 and F 000026. Rare. *Rare*  
\$350 - \$400
- 632 1997. Sir Charles Kingsford Smith portfolio. *UNC*  
\$110 - \$120

## Assorted

- 633 1966 Coombs-Wilson \$1 (2 notes), \$2 (2 notes), \$10 (2 notes), \$20 (2 notes). (8 notes total). *aEF-EF*  
\$100 - \$110

## Miscellaneous Australian Coins

## Halfpenny

- 634 1963, 1964 (10), Penny 1963 (6), 1964 (2). Mostly full red. (19 coins total). *Ch.UNC/GEM*  
\$20 - \$30



- 635 Partial set in Dansco hard album. Includes dates from 1924 - 1932, 1936 in better grades (*VF-gEF*), 1939-1964 (missing 1940, 1941, 1944, 1959) many in better grade, some mint red. (36 coins total). *VF-Ch. UNC*

\$200 - \$250

## Penny

- 636 1946. Key date. *aVF*  
\$30 - \$40
- 637 1946. key date. (4 coins). *aFINE-aVF*  
\$160 - \$180
- 638 1915-1964. A few with some red, includes 1920 dot above. (30 coins total). *VG-aUNC*  
\$30 - \$40

## Threepence

- 639 1910 (2), 1911, 1912. (4 coins total). *F-VF*  
\$30 - \$40
- 640 1934. Obverse scratch. *gEF/aUNC*  
\$50 - \$60
- 641 1942M. Key date. (4 coins total). *VG-FINE*  
\$40 - \$50
- 642 1938-1964 in damaged Hendo album. No 1942, but some better grade coins including an aU-UNC 1947, 1953, 1954. (33 coins total). *gVF-UNC*  
\$120 - \$140

## Shilling

- 643 1910. (2 coins total). *aEF-EF*  
\$80 - \$100
- 644 1911, 1912. (2 coins total). *gVF/FINE*  
\$60 - \$80
- 645 1912, 1913, 1915 (2), 1916, 1917. (6 coins total). *VG-VF*  
\$30 - \$40
- 646 1915, 1915H. (2 coins total). *VG-aFINE*  
\$40 - \$50
- 647 1920, 1925, 1928, 1931, 1946, 1946 dot. (6 coins total). *VG-VF*  
\$30 - \$40
- 648 1921 Star. Key date. (6 coins total).  
*VG-aFINE*  
\$70 - \$80
- 649 1934, 1935. (2 coins total). *VF/gVF*  
\$40 - \$50
- 650 1944S. Ex mint roll. (3 coins total).  
*Ch.UNC/GEM*  
\$110 - \$120
- 651 1952, 1960, 1961, 1962, 1963, Threepence  
1944S. Toned with mint bloom. (6 coins  
total). *UNC-Ch.UNC*  
\$50 - \$60



- 652 **1961. Original roll of 20. Still in brown  
paper wrapper. Slight toning to end coins.  
(20 coins total). *UNC***  
\$350 - \$400
- 653 1963. (5 coins total). *UNC-Ch.UNC*  
\$25 - \$30

## Florin

- 654 1910 (3), 1915, 1921 (2), 1922 (2), Shilling  
1915H. (9 coins total). *Good-VG*  
\$100 - \$110
- 655 1912 (2), 1917, 1919, 1923, 1926. (6 coins  
total). *aF-aVF*  
\$80 - \$90
- 656 1915 (2), one cleaned with slight damage,  
one worn. (2 coins total). *VG-gFINE*  
\$80 - \$100
- 657 1922, 1928, 1934. (3 coins total).  
*gF-VF*  
\$60 - \$70
- 658 1927 Canberra. Both with old original tone  
and underlying mint bloom. (2 coins total).  
*gEF-aUNC*  
\$60 - \$80
- 659 1927, 1928 (2), 1935, 1936, 1938. (6 coins  
total). *F-VF*  
\$80 - \$100
- 660 1932 and 1933. (2 coins). *Good-VG*  
\$120 - \$140
- 661 1938, 1941, 1943S, 1945, 1946, 1947 (2),  
1953. (8 coins total). *aEF-aUNC*  
\$100 - \$110
- 662 1942. Broken bank roll of 20 coins.  
*EF-UNC*  
\$220 - \$240
- 663 1952, 1953, 1960, 1963. (4 coins total).  
*aU/UNC*  
\$40 - \$50



- 664 Full set 1910-1963 in Dansco hard album. Some in better grade including good later dates, includes VG 1932, VF 1934/5 and commemoratives. (55 coins total). *VG-EF*  
\$550 - \$600
- 665 Partial set 1938-1963 in Dansco hard album. Mostly in better grade (aUNC or better, only the 1939 is gVF), some with mint bloom. (25 coins total). *gVF-Ch.UNC*  
\$280 - \$300

### Crown

- 666 1936 Silver 'Fantasy' Crown restrike. Toned. *FDC*  
\$30 - \$40
- 667 1937. (3 coins total). *gVF*  
\$110 - \$120
- 668 1937. (3 coins total). *aEF*  
\$130 - \$140
- 669 1937. Toned, a few better coins. (8 coins total). *aVF-gVF*  
\$200 - \$220
- 670 1937. (12 Coins total). *VG-VF*  
\$280 - \$300

### Twenty Cent

- 671 1968. PCGS graded MS 65. *Ch.UNC/GEM*  
\$70 - \$80

### Fifty Cent

- 672 1966 Round 50 Cents. In PCGS tub. (114 coins total). *EF-UNC*  
\$750 - \$800
- 673 Partial ex Mint rolls 1970 (52), 1981 (8), 1988 (17), 1991 (10), 1994 (3). (90 coins total). *UNC*  
\$90 - \$100

### Sets/Albums

- 674 1966 Decimal collection. 1c (2), 2c, 5c (2), 10c (2), 20c (2), 50c Round (2). (11 coins total). *gEF-UNC*  
\$25 - \$30
- 675 3 sets of 1975 Decimal coins, 1 Cent to 50 Cent. (18 Coins total). *EF-UNC*  
\$10 - \$20

### Assorted

- 676 Halfpenny 1963Y, Threepence 1943D, 1951PL, 1960, 1963, 1964, Sixpence 1954, 1958, 1962, 1963, Shilling 1957, 1959, 1962. Better grades. (13 coins). *aUNC-Ch.UNC*  
\$70 - \$80



- 677 \$1 Coins in packs 2010 C (5), 1998 C, 1999 B (5). (11 coins total). *UNC*  
\$30 - \$40
- 678 \$1 Proof 1984. Package damaged. First year of issue. (2 items total). *FDC*  
\$5 - \$6

- |   |  |     |  |
|---|--|-----|--|
| 679   | Tuvalu \$1 1930 Penny Bronze Proof issue 2005. Slight damage. <i>UNC</i>   | 687 | Mint set 1974. <i>UNC</i>  |
|   | \$40 - \$50  |     | \$40 - \$50  |
| 680   | One Dollars, Four Coin Mintmark and Privy Mark set 2010 (2), 2011. (3 items total). <i>UNC</i>                   | 688 | Mint sets 1980 (2). <i>UNC</i>   |
|   | \$40 - \$50  |     | \$18 - \$20  |
| 681   | Sir Donald Bradman \$5 Bimetal 1996 (11). Also Enfranchisement of Women 1994. (12 coins total). <i>UNC</i>       | 689 | Mint sets 1984 to 2005. (22 sets total). Some light marks to packaging. <i>UNC</i>                                     |
|   | \$120 - \$140  |     | \$200 - \$220  |
| 682   | \$10 State series 1985. Victoria. (5 items total). <i>UNC</i>  | 690 | Mint sets 1985, 1986, 1988, 1991. Some minor damage. (4 sets total). <i>UNC</i>  |
|   | \$60 - \$70  |     | \$60 - \$70  |
| 683   | Masterpieces in Silver 1991. 8 coin set plus medallion. Some marks/damage to packaging. <i>FDC</i>               | 691 | Mint sets 1985 (2), 1986 (2), 1989 (2). (6 sets total). <i>UNC</i>   |
|   | \$90 - \$100   |     | \$60 - \$80  |
| 684   | Sydney 2000 Olympic Silver 16 coin Collection. In original jarrah box of issue, missing certificates. <i>FDC</i> | 692 | Mint sets 1991 (2) 1986 (2). Slight damage. <i>UNC</i>   |
|   | \$500 - \$550  |     | \$30 - \$40  |
|  |  | 693 | Proof set 1966. In hard blue case. The 50 Cent is PCGS graded PR63 DCAM. Some light handling marks to some. <i>FDC</i> |
|   |  |     | \$180 - \$200  |
| 685   | <b>Sydney 2000 Olympic Silver 1 Kilo coin. In original jarrah box of issue with certificates. <i>FDC</i></b>     | 694 | Proof set 2005. Slight damage. <i>FDC</i>  |
|   | <b>\$750 - \$800</b>   |     | \$40 - \$50  |
|   |  | 695 | Baby Proof set 2006. Slight damage. <i>FDC</i>   |
|   |  |     | \$50 - \$50  |

### Royal Australian Mint Coins and Sets

- |     |  |               |
|-----|--|---------------|
| 686 | Two Hundred Dollar Gold Coin 1985. In original packaging. <i>UNC</i> | \$380 - \$400 |
|-----|--|---------------|

### Miscellaneous & Unreserved Lots

- |     |   |             |
|-----|---|-------------|
| 696 | 1976 10 Cent and 20 Cent Mint rolls. Rolls a bit damaged. (2 items total). <i>UNC</i> | \$70 - \$80 |
|-----|---|-------------|



697 Australian Postal Notes, 5 Shillings 22-1-1964, Sep 1944 NSW, 6 Shillings VIC, 13-12-1939 2 Shillings NSW. (3 notes total). *F-aVF*

\$200 - \$220

698 Collection of Latvian issues 1924-1932 1 Santims-5 Lati. (11 Coins total). *aVF-UNC*

\$90 - \$100

699 Crude cast copy of a Dump NSW 1813. *aFINE*

\$10 - \$20

700 Copy Victoria Cross medal.

\$20 - \$40



701 First Day Cover Specimen 50 Cents 1969 in Nuphil Associates cover cancelled Yarralumla ACT 1-9-1969. In lovely original condition. Rare. *UNC*

\$900 - \$1000

702 GB Pennies 1866-1940. A few better. (26 coins total). *Poor-aUNC*

\$10 - \$20

703 Germany 5 Mark 1902A Prussia. Also Germany 3 Marks 1913. (2 coins total). *VF-EF*

\$50 - \$60

704 Germany Thaler 1861 Prussia. Light tone. *EF*

\$40 - \$50

705 Misstruck 1 Cent 1966. Off centre rim lip. Red and brown. *aUNC*

\$20 - \$30

706 New Zealand Halfcrown 1933, 1937, 1940, 1941, 1945. (5 coins total). *aF-gVF*

\$40 - \$50

707 New Zealand Halfcrown 1933 (3), 1934. (4 coins total). *gF-VF*

\$40 - \$50

708 NPA 1993 \$20 Fraser-Cole 80th Anniversary folder. Low numbered red serial plus official stamp. Serial No M000020. In original packaging. *UNC*

\$100 - \$110

709 NPA 1994 Deluxe set \$5 & \$10. Low numbered matching serials AA 94 006 951. (2 items total). *UNC*

\$30 - \$40

710 NPA 1995 \$10 Fraser-Evans AA95 Deluxe dated folder. Also 1995 \$20 folder. Low numbered matching serials AA95 004 427. In original packaging. (2 items total). *UNC*

\$50 - \$60

711 NPA 1995 \$5, \$10 & \$20 Fraser-Evans AA95 Deluxe dated folders. Low numbered matching serials AA95 000 474. In original packaging. (3 items total). *UNC*

\$60 - \$70

712 NPA 1996 \$10, \$20, \$50 & \$100 Fraser-Evans AA96 Deluxe dated folders. Low numbered matching serials AA96 002 300. In original packaging. (4 items total). *UNC*

\$280 - \$300

713 NPA 1996 Premium set \$5, \$10, \$20, \$50. Low numbered matching serials AA 96 000 856. (4 items total). *UNC*

\$180 - \$200

- 714 Sherwoods Mint set 1966. (2 sets total).  
*UNC*  
\$40 - \$50
- 715 Sherwoods Predecimal coin set of 6 coins  
QEII 1953-1964. (2 sets total). *UNC*  
\$30 - \$40
- 716 South Africa 5 Shillings 1948, 1952. (2 coins  
total). *gVF-aEF*  
\$50 - \$60
- 717 Switzerland 5 Francs 1965B, 1967B, 1969B.  
(3 coins total). *aU/UNC*  
\$40 - \$50
- 718 Ten Dollar Silver Coin 1989, Hendo  
Souvenir coin album 1966, GB  
Commemorative Crown 1981 Charles and  
Diana. (3 items total). *UNC*  
\$25 - \$30
- 719 USA Misstruck 1 Cents 1991 and N/D.  
Slightly off centre and major off centre  
strikes. Mint red. (2 coins). *UNC*  
\$20 - \$40
- 720 USA Morgan Silver Dollar 1880S, 1904O. (2  
coins total). *gEF*  
\$50 - \$60
- 721 USA Morgan Silver Dollar 1888O, 1921S. (2  
coins total). *UNC*  
\$60 - \$70
- 722 USA Morgan Silver Dollar 1889, 1889,  
1896, 1898. (4 coins total). *VF-EF*  
\$100 - \$120
- 723 USA Silver Dollars 1921, 1922. (2 coins  
total). *EF*  
\$70 - \$80

Preliminary Prices realised will be posted on the website by late afternoon on Monday 29th September, and is updated in real time as any changes or post auction sales occur. All auction catalogue subscribers will also have the prices realized posted to them by the 3rd October, and should receive them soon after. Any Passed In lots MAY still be available as shown for sale Online on a first come basis until early October. All remaining unsold lots will then be withdrawn from sale.

The next Live Auction, Sale 81, will be in **March 2015**.

Keep an eye out also for our upcoming Online only Postal Sale (Postal Sale 5) coming in January 2015! Sign up online now to receive email notifications and to gain access to view lots and to bid online. Please see the website for further information and details, or contact us.

We will be accepting lots for consignment for Sale 81 and Postal Sale 5 from October 2014 onwards, or until the sales are fully finalised. Please contact us now to discuss the submission of any lots.

[www.iagauctions.com](http://www.iagauctions.com)

For any more information please call our office on:  
Ph: (07) 55 380 300 - or Fax: (07) 55 387 296

**Alternately you can Email us at:**

[mail@iagauctions.com](mailto:mail@iagauctions.com)

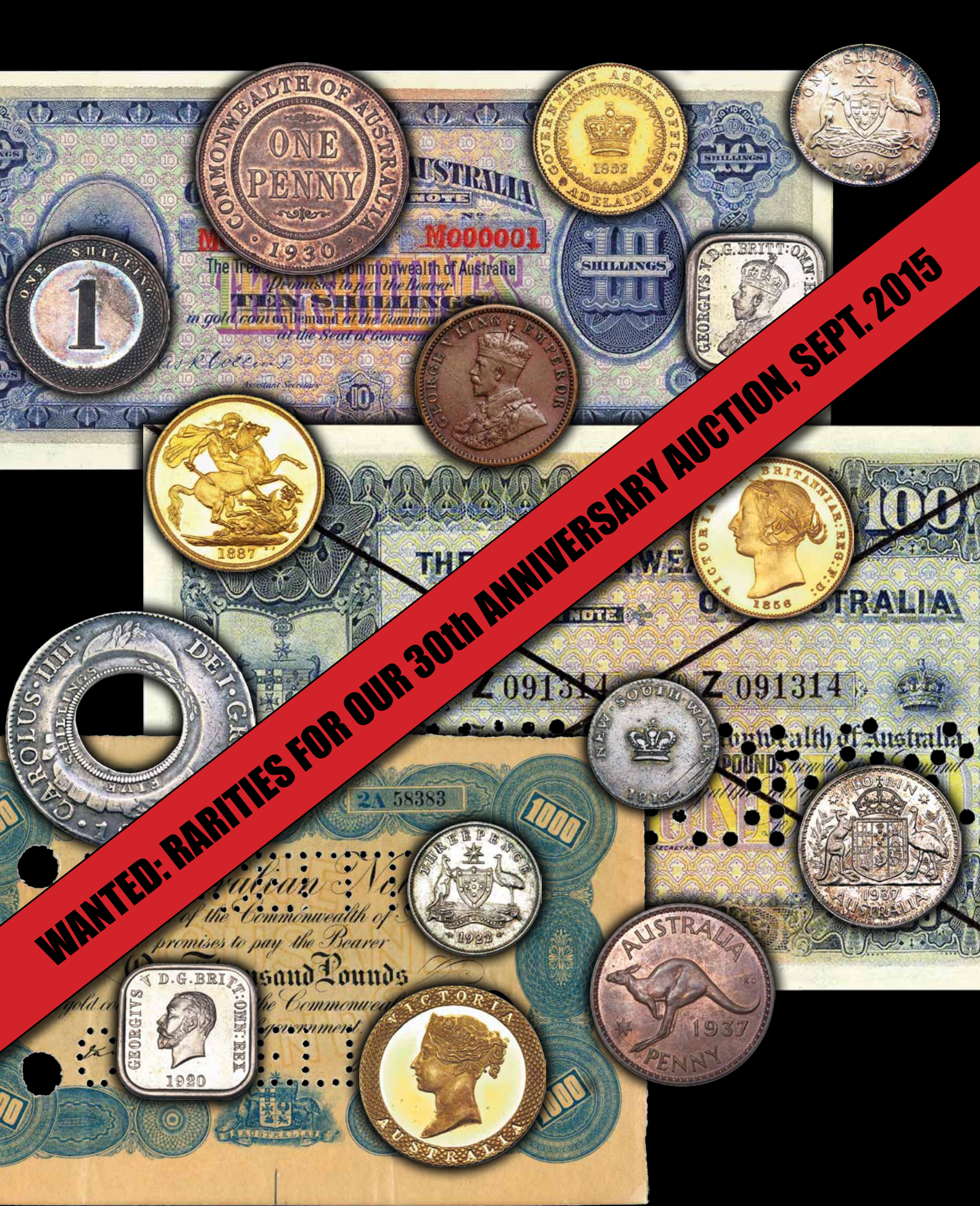
**Download the Prices Realised and view unsold lots after the sale from our Website:**

[www.iagauctions.com](http://www.iagauctions.com)

Notes

Thank You For Your Participation

Room bidders please wait to collect lots until after the end of Session 2 has finished to collect. We will endeavour to get you underway as quickly as possible. Lots can also be collected at our offices during the following week. Postal bidders please allow us until at least midday on Monday the 29th to sort, finalise and double check all postal and online bids.



**WANTED: RARITIES FOR OUR 30th ANNIVERSARY AUCTION, SEPT. 2015**

**Auctioning The Best and Rarest in Coins and Banknotes**  
**Accepting lots for our 2015 Auctions now!**

# LEGENDARY

NUMISMATICS



Legendary Quality

Stock updated regularly

*Now available for purchase online*

W: [www.legendarynumismatics.com.au](http://www.legendarynumismatics.com.au)

E: [info@legendarynumismatics.com.au](mailto:info@legendarynumismatics.com.au)



# Are you joining IAGs Online Bidding **REVOLUTION?**

## Online Auction Explanations

### Registration, Passwords, Profile and Logging In:

When you register, you will be sent an email within a few minutes.

Easy to follow instructions to make online bidding a fun and exciting experience from the comfort of your home, office, library, cafe or even your mobile phone.



View **EVERY** lot of every Auction in high quality.

| Lot No. | Time of Bid (AEDST)     | Bid Status [Outbid / Current Bid] |
|---------|-------------------------|-----------------------------------|
| 2       | Jun 18, 2014 - 20:00:16 | This bid has been outbid          |
| 3       | Jun 20, 2014 - 14:23:24 | You are currently the top bidder  |

View the status of your bids and account in real time.



View Catalogues online in magazine format, just like the printed versions, but greener!

### Current and Past Auctions List

- POSTAL SALE 4** Closed 7:00pm AEST 30th June, 2014  
Online Only
- SALE 79** Sunday 13th April 2014  
Sofitel Hotel, Gold Coast, Queensland
- SALE 78** Closes 6:00pm AEST 19th October, 2013  
Combined Online / Live
- POSTAL SALE 3** Closed 7:00pm AEST 19th June, 2013  
Online Only
- SALE 77** 2nd September 2012  
Sofitel Hotel, Gold Coast, Queensland

Download and view Catalogues and Prices Realised from current and past auctions.



View and save lots as full screen images in high resolution.

All for **FREE** at [www.iagauctions.com](http://www.iagauctions.com)



LOT 168



LOT 182



LOT 214



LOT 172



LOT 201



LOT 251



LOT 244



LOT 245



LOT 289



LOT 368



LOT 389



LOT 395



LOT 428



LOT 485



LOT 590



LOT 597



LOT 248



LOT 279



LOT 371



LOT 378



LOT 399



LOT 402



LOT 585



LOT 589



LOT 600



LOT 603

# Terms And Conditions of Sale

*Please read the following "Terms of Sale" carefully. These terms are applicable to all floor bidders and mail bidders in this auction. Your submission of bids in this Auction constitutes your acceptance of these "Terms of Sale".*

**1.** This is a public auction sale, NOT an approval sale. At the fall of the gavel or auctioneer's call of "Sold", all sales are then final, and any bid acknowledged and relied on by the auctioneer shall not be withdrawn. Bidding in this auction in any way confirms that the bidder personally guarantees all payments, and acknowledges and accepts the Terms and Conditions of sale as set out herein. The auctioneer has final discretion in all such matters. In case of a dispute, the lot(s) in question may be immediately resold. The auctioneer as represented here includes International Auction Galleries as an entity.

**2.** Payments must be made in full and all floor bidder purchases must be removed the day of the sale, or by 5p.m. the next day. Absolutely No lots will be released until payment in full has been made. Payment may be made in Cash, by Personal Cheques (with proper identification, at the discretion of International Auction Galleries), or by Bank Transfer or Major Credit Cards as stipulated. Successful postal bidders will be notified by mail via an auction receipt. All postal bidder accounts must be fully finalised within 14 days of the sale date.

**3.** A 19.25% buyer's premium will be added to the knock down price of each lot (includes GST where applicable). **All payments by American Express will incur a 3% surcharge.**

**4.** Unless otherwise specifically stated by the auctioneer, each new bid shall be raised above the previous bid by such amount as is determined by the auctioneer during the course of the auction, and no party shall be allowed to retract his or her bid after acknowledgment by the auctioneer.

**5.** The auctioneer reserves the right to refuse any bid and to withdraw any goods from sale at any time, or to disclose any reserves or vendor information, without having to state any reason.

**6.** At the fall of the hammer, (if required by the Auctioneer), the purchaser shall give his or her full name and address, and pay 25% of the purchase price deposit. In default, the lot(s) purchased may, at the auctioneer's discretion, immediately be reoffered and resold. All lots sold will remain the property of the owner/vendor until cleared payment is made in full. Only then will the title of ownership of the lots pass to the purchaser, irrespective of any terms or deferment of payment. A cheque and signed guarantee of payment form will be necessary on all 30 day trade accounts.

**7.** Except as otherwise provided by state or federal law, no condition or warranty is given or implied by the auctioneer in respect of any lot offered for sale via auction. As all lots are given for inspection prior to the commencement of the sale, it shall be presumed that the goods have been inspected and that the purchaser accepts the goods are sold with all faults, and all lots are sold as is, on the basis of Caveat Emptor. No error or mis-description of any lot shall give cause for an invalidation of sale or an abatement of price, and the auctioneer shall not be held responsible for any such error, despite all care being taken. All lots are inspected and offered in good faith to the best of our determination to be genuine as described (except where so noted), however no guarantee is undertaken with respect to refunds on this basis.

**8.** The auctioneer shall not be liable for any description or mis-description given on any of the goods presented here for sale in any way. Any statement as to the description of goods is given as a statement of opinion only as represented to the auctioneer, and is not to be relied on as a representation of fact. Whilst every effort is made, the auctioneer gives no warranty that the quantities or any grading given with respect to the description of any lot as stated is correct. All images used are given as a guide only, and are not guaranteed to be an accurate representation.

**9.** No lots purchased by a bidder may be returned, including those lots where the bidder is acting as agent for another. There are no returns or refunds except for reason of lack of authenticity (as is stated in clause 7 and 8 above detailing liability). It is assumed that all intending bidders (including all postal and internet bidders) have obtained their own satisfaction and/or done due diligence on all lots before submitting any bids in any manner, and all bids thusly submitted are subject to the full terms and conditions of sale. Items purchased and submitted to third party grading immediately voids any and all further rights of return. The auctioneer accepts no responsibility for any mistakes in any postal or phone bidding conducted. Late remittance of payments constitutes just cause for revocation of all return privileges. In the event that a bidder is acting as an agent for another party, and that agency has not been disclosed to the auctioneer in writing 24 hours before the sale date, then the bidder is deemed by the auctioneer to be the final buyer in all respects, and is fully responsible for all payments, fees and charges. **In no event may any lot(s) be returned after Twenty One (21) days from the date of the auction. All sales are then final.**

**10.** If any purchaser fails to comply with any of conditions of sale as outlined here or if any monies paid in any way given on settlement of account for any goods is dishonoured or unfulfilled, then any monies which the purchaser has paid to the auctioneer on account of the purchase shall then be forfeited absolutely to the vendor. The auctioneer acting as agent for the vendor is at liberty to re-sell the lot(s) in any manner and upon such terms and conditions as they may deem proper and/or to then sue the purchaser for any loss or resulting damages as set out below. Damages include all losses and expenses incurred by the vendor or the auctioneer as well as all damages which the vendor or the auctioneer may sustain resulting from any re-sale and storage, which shall then be recovered from the purchaser as liquidated damages. The auctioneer (acting on behalf of the vendor) in the event of such resale is entitled to:

**a)** The total amount of any and all commissions and/or buyers premiums applicable or any other fees and commissions lost as a result of the purchaser defaulting on the purchase.

**b)** The full cost of advertising and all other expenses related to re-sale as deemed necessary, including any storage costs and insurance charges.

**c)** Any differential in price from the initial sale price to the price achieved in re sale of the items(s).

**11. A service charge of 2% compound per month (or part thereof) will be added to overdue accounts (30 days after the date of Auction is the overdue period for all unpaid accounts).** In any event the title of any lots sold will not pass to the purchaser until the full amount of the purchasers auction account has been fully paid and remitted to the vendor, including any other service charges, storage or any other fees resulting from any late payments.

**12.** Estimates are given only as a guide, and not given as starting points for bidding: Lots may sell for a price greater than or less than these estimates. Bidding will start at an increment above the lowest postal bid received, or at the Auctioneers sole discretion. All prices are in Australian Dollars.

**13.** All images, text and information supplied in this catalogue remain the property of International Auction Galleries, and may not be used or transmitted in any way without written permission.



LOT 250



LOT 370



LOT 372



LOT 374



LOT 367



LOT 594A



LOT 590



LOT 597

LOT 170



LOT 600



LOT 596



LOT 603