



The

Benchmark Collection

In conjunction with

LIVE ONLINE AUCTION
Monday 19th January 2015



STRAND
COINS





LOT 8



LOT 15



LOT 100



LOT 180

Welcome to IAGs 'The Benchmark Collection'

Stunning! That was my first impression of this fantastic collection. So many superb grade coins, superb strikes, wonderful old tone, beautiful eye appeal, in a word - sexy... the list of superlatives goes on. Handling a Complete Collection such as the Benchmark Collection is a once in a lifetime opportunity, and we are proud to present this magnificent collection, in conjunction with Strand Coins (who have compiled it over many years with the current owner).

We have included many notes and comments by Mark Duff of Strand Coins due to his intimate knowledge of every coin and it's provenance, as well as a comprehensive, never before released illustrated "Key" to each and every coin Obverse and Reverse die type. As such, the catalogue, the information and images it contains will truly become a Benchmark in their own right.

The quality of the George V coins right across the board is simply unbeatable, the Florins contain so many breathtaking coins, the Silver issues are all struck up, the Copper has many amazing coins, and most of the "Varieties" are amongst the finest, if not the finest known. The grading by NGC is very even across every lot, and if anything, is sometimes conservative given the genuine superb quality of the collection. We are proud to offer this complete "Benchmark" collection, the likes of which may not be seen on the market ever again.

Viewing In Sydney: Monday 5th to Saturday 10th January 2015, Strand Coins, Ground Floor Shop 1c Strand Arcade, 412-414 George St, Sydney NSW 2000 10am to 5pm.

Viewing In Melbourne: Monday 12th and Tuesday 13th January 2015 The Westin Hotel, Business Centre Boardroom (Level 1) 205 Collins St, Melbourne VIC 3000 10am-5pm.

Viewing In Queensland: Wednesday 14th to Saturday 17th January by appointment, in our offices from 9-5pm, Level 2, 20-22 Queensland Avenue, Broadbeach, Gold Coast, QLD. Please call our office from the 5th January 2015 on (07) 55 380300 for further details or appointments, or email us at mail@iagauctions.com.

IAG:-

Phone: (07) 55 380 300

Email: mail@iagauctions.com

Website: www.iagauctions.com

Strand Coins:- Phone: (02) 92 316 694

Email: info@strandcoins.com

Website: www.strandcoins.com

When we were set the challenge by a collector to complete a set of Australian Pre-decimal coins that included all established varieties in the highest attainable grade, we did not realise that it would take over twenty years to achieve his goal. Over the years, as other major collections have changed hands or been disbanded, we have been active buyers adding and subtracting coins from the collection to fill holes and to improve quality. The result is the eponymous 'Benchmark Collection' which stands alone as the most comprehensive high grade collection of Australian Pre-decimal coins ever assembled.

To ensure that we had completed each series it was necessary to write a new catalogue (available online at www.benchmarkcoincatalogue.com) to bring together the comprehensive list of legitimate varieties and types missing from other publications. Like a previous Mint Master, Sir Isaac

Newton, who was forced to invent new language to describe his discoveries, the catalogue of the Benchmark Collection incorporates new varieties and types and describes and categorises them in a methodical format. Your souvenir hard copy of the Benchmark Sale Catalogue will add significantly to your numismatic reference library.

The owner of the Benchmark Collection has chosen to remain anonymous but we thank him for his patronage throughout the years, for without his dedication it would have been impossible to complete the collection to such an outstanding level.

It is unlikely that once broken up the Benchmark Collection can ever be replicated and we encourage you to participate in this important Sale.

Strand Coins

Welcome to IAG's Benchmark Collection, in conjunction with Strand Coins

Monday 19th January 2015 at 7pm AEDST.

Auction Live Online and Postal Only!

Important Auction Information:

Viewing and Auction Times:

Viewing In Sydney— Monday 5th to Saturday 10th January 2015, Strand Coins, Ground Floor Shop 1c Strand Arcade, 412-414 George St, Sydney NSW 2000 10am to 5pm.

Viewing In Melbourne – Monday 12th and Tuesday 13th January 2015 The Westin Hotel,

Business Centre Boardroom (Level 1) 205 Collins St, Melbourne VIC 3000 10am-5pm.

Viewing in Queensland - Wednesday 14th to Saturday 17th January by appointment, in our offices from 9-5pm, Level 2, 20-22 Queensland Avenue, Broadbeach, Gold Coast, QLD. Please call our office from the 5th January 2015 on (07) 55 380300 for any further details or appointments, or email us at mail@iagauctions.com

Note: We will be closed from the 24th December 2014 to the 5th January 2015. Email us for any and all Enquiries: mail@iagauctions.com

A note on Estimates and Reserves:

Two High/low estimates are provided in this sale as follows:

- (1) Auction Guide - Estimate Low
- (2) Retail Guide – Estimate High

Reserves in this Auction have been set at 50-75% of estimate.

Most lots under \$250 are unreserved, and bidding will start at \$1.

Payment: All amounts are in Australian Dollars. Credit Cards (accepted with signature & full address details): MasterCard, Visa & Amex only. A Surcharge of 3% will be applied to all Amex card charges only.

Buyers Premium: A 19.25% total Buyers Premium will be added on to the knock-down price of all lots. Additional credit card charges will be waived with any payments made with either Visa or MasterCard.

Postal Bidders: Bidding (phone, fax, post) will be accepted until 6pm AEDST Saturday 17th January 2015, then all POSTAL bidding will be closed and final.

All successful bids are visible. The current bid level may not be the maximum bid (this is not shown). The system automatically accepts and increases bids as other bidding

is accepted in accordance with the set bid increments. Bidding prior to the sale is recommended to ensure that you don't miss out, even if you intend to bid live online! Prior bids will not compete with your live bids should you also bid live.

Web (Online) Postal bids: Bidders must be registered and accept the terms and conditions to bid Online. Online bids can be submitted right through the sale and can be made even when the Auction is running live, right up until that item is offered.

Live online lot by lot bidding will commence on our website for registered bidders at 7pm AEDST (Auction Day) Monday 19th January 2015 and will take 2 hours to complete.

Online members use a bidding "Watchlist". This list is used to control, view and submit your bids automatically via the website. This will then show you your current successful/unsuccessful bids in live time. The view "Benchmark Collection Lots" section will also show every lot and current bids, with successful bids in green. Clicking on an individual lot will bring it up full screen, and you can bid from there also. The "View All Lots With Bids" function creates a PDF where all current successful postal bids on every lot can be viewed at any time.

Postage and Insurance: Small items under \$200 - \$7.50 via normal mail, Small items between \$200 and \$1000 - \$12.50 via registered post, Items over \$1000 - \$17.50 via registered post person to person, Heavier items over 500 grams have an additional charge of \$2 per KG or part thereof. International post will be at cost but not insured. Insurance is charged at \$1 per \$100 upon request.

Credit cards: Successful buyers lots will be processed and dispatched for existing clients upon clearance of all funds. At our discretion we reserve the right to hold new clients lots who pay by credit card for up to 60 days. All postal bid payments are to be completely finalised within 14 days of sale please. For any more information please contact us during business hours at our office on: (07) 55 380 300. Alternatively you can email us at: mail@iagauctions.com

Direct Bank Payments/Postage: Please advise us if you are paying by electronic transfer to ensure that your payments get processed effectively. Make sure to include your name and invoice number in your payment. Please note that items won't usually be dispatched before three days after cleared payment has been confirmed. Where possible, all items will be posted on a Monday or Tuesday.

Bank: ANZ Broadbeach
Account: Paradise Coins Pty Ltd.
T/A International Auction Galleries
BSB: 014 513
Account No: 1027 43868

Note: All Images contained herein are the property of Strand Coins and NGC. Information and Descriptions contained herein are the property of Strand Coins.

Happy Collecting to All!

Table of Contents

Halfpenny	1 - 64	5
Penny	65 - 166	15
Threepence	167 - 221	32
Sixpence	222 - 270	40
Shilling	271 - 320	47
Florin	321 - 378	55
Crown	379 - 380	67

Halfpenny



- 1 1911 Halfpenny (Obv 1/Rev A). NGC graded MS 65 RB. Near Gem example with reflective surfaces. Almost Full Red.

\$1250 - \$1750



- 2 1912H Halfpenny (Obv 1/Rev A). NGC graded MS 66 RD. Gem with Full Mint Bloom. The pick of the 'Baldwin Hoard'.

\$3000 - \$4000



- 3 1913 Halfpenny (Obv 1/Rev A). NGC graded MS 64 RB. Near Gem. One of the finest known.

\$1250 - \$1750



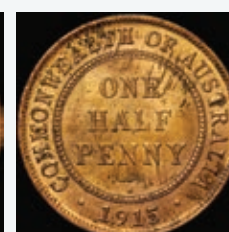
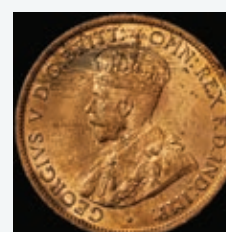
- 4 1914 Halfpenny (Obv 1/Rev A). NGC graded MS 65 RB. Near Gem example of this key date which is virtually Full Red.

\$3000 - \$4000



- 5 1914H Halfpenny (Obv 1/Rev A). NGC graded MS 65 RD. A superb Full Red Gem. The finest known.

\$10000 - \$12500



- 6 1915H Halfpenny (Obv 1/Rev A). NGC graded MS 64 RB. Key Date. Choice Uncirculated, mostly Red and difficult to better.

\$10000 - \$12500



- 7 1916I Halfpenny (Obv 1/Rev A). NGC graded MS 64 RB. Choice Uncirculated with even colour.

\$1000 - \$1250



8 1916I Mule Halfpenny (Obv 2/Rev A). NGC graded AU Details BN.

Although Australia began producing silver coins in 1916, its mints were not yet capable of producing the larger bronze coins. As WWI raged, supply lines from Britain were stretched and vulnerable to attack, and so the Calcutta Mint was called upon to strike halfpennies and pennies for Australia during the war years of 1916, 1917 and 1918. These coins are identified by the 'I' mint mark.

In 1916, the Calcutta Mint was also producing Indian Quarter Anna coins for their own use and in a major production error an obverse of the Indian coin was paired with a reverse of the Australian Halfpenny. There is anecdotal evidence that a collector discovered a 1916 'Mule' Halfpenny in his collection in the early 1930s without realising its significance, and it was this coin that was re-discovered in the 'Koschade' collection in July, 1965 which resulted in a number of other examples being unearthed in Adelaide and Melbourne. At about the same time, an astute collector, who was alerted to the coin's existence, purchased an example for threepence from an unsuspecting coin dealer in Bathurst St, Sydney.

Unsurprisingly, the public unveiling some 50 years after being struck was met with scepticism by coin dealers. However, the 'Mule' emerged randomly across Australia with little or no monetary benefit and this would attest to them being a genuine mint error rather than an elaborate hoax. This is reinforced by the fact that all known examples exhibit many decades of circulation except the Koschade coin, which was reportedly put away in the 1930s and which survives in about uncirculated condition. In retrospect, its late discovery is not unusual in Australian numismatics as the misspelt 1858 Sydney Mint 'Halfsovrreign' was not noticed until the mid-1990s.

As would be expected, the 1916 'Mule' Halfpenny was the product of one pairing of dies, as on the reverse they all bear a small pimple on the inner concentric circle above the 'N' of 'ONE'. Of the 3,600,000 regular 1916 Halfpennies struck only a very small percentage bear this pimple and so it is probable that just one reverse die bore this flaw. This aligns with the theory that the Quarter Anna die was very quickly discovered and was replaced with a normal obverse die which in tandem with the reverse used on the 'Mule' went on to produce perhaps an additional 30,000 circulating coins.

How many 'mules' were struck before the mistake was discovered is unknown but it is undoubtedly a major mainstream rarity in the Australian series. There are about ten examples of the 'mule' accepted as genuine with probably a few more sitting in old collections that are yet to be discovered.

Having been put aside in the early 1930s, the 'Koschade' Mule Halfpenny is the best surviving example. It has been graded NGC AU Detail (Damaged) due to the obverse die clash which in our opinion adds to its appeal.

\$100000 - \$125000



- 9 1917I Halfpenny (Obv 1/Rev A). NGC graded MS 65 RB. Superb Gem with Proof-like surfaces. The best of date.

\$1750 - \$2000



- 10 1918I Halfpenny (Obv 1/Rev A). NGC graded MS 65 BN. Near Gem with plenty of deep colour. One of the best examples of this hard date.

\$10000 - \$12500



- 11 1919 Halfpenny (Obv 1/Rev A). NGC graded MS 66 RD. Gem. A Full Red example that is the best of the date.

\$3000 - \$4000



- 13 1921 Halfpenny (Obv 1/Rev A). NGC graded MS 65 RD. Gem. A Full Red example that is the best of the date.

\$3000 - \$4000



- 12 1920 Halfpenny (Obv 1/Rev A). NGC graded MS 65 RD. Gem. A Full Red example that is the best of the date.

\$4000 - \$5000



- 14 1922 Halfpenny (Obv 1/Rev A). NGC graded MS 65 RB. Near Gem with consistent colour.

\$1750 - \$2000



15 1923 Halfpenny (Obv 1/Rev A). NGC graded MS 62 BN.

In July 1923, the Melbourne Mint received an order to produce £1,000 of halfpennies, and in September of that year three pairs of dies were prepared. The dies were obviously of a poor standard as one pair of dies was immediately returned to the workshop. The two remaining pairs that were used deteriorated so quickly that the vast majority of 1923 halfpennies exhibit diagnostic die cracks which usually show up in the obverse legend. Only a small number of coins were struck before the dies ultimately failed and few are found without evident die-cracking. The Uncirculated 'Benchmark' coin, NGC MS 62 BN is a fully detailed early strike without die cracks. A major rarity.

\$75000 - \$100000



- 16 1924 Halfpenny (Obv 1/Rev Am). NGC graded MS 65 RB. Gem with full colour. By far the finest known example of this key date.

\$15000 - \$17500



- 17 1925 Halfpenny (Obv 1/Rev Am). NGC graded MS 64 RB. Near Gem with deep even bloom. A difficult date.

\$4000 - \$5000



- 20 1928 Halfpenny (Obv 1/Rev Am). NGC graded MS 65 RB. A Gem with superb even colour.

\$5000 - \$7000



- 18 1926 Halfpenny (Obv 1/Rev Am). NGC graded MS 64 RB. Choice Uncirculated example which is mostly Red.

\$1250 - \$1500



- 21 1929 Halfpenny (Obv 1/Rev Am). NGC graded MS 65 RB. Gem with consistent even colour.

\$2500 - \$3000



- 19 1927 Halfpenny (Obv 1/Rev Am). NGC graded MS 65 RB. Gem. Should have been graded Full Red. Best of the date.

\$2000 - \$2500



- 22 1930 Halfpenny (Obv 1/Rev Am). NGC graded MS 65 BN. Gem with deep lustre. A key date.

\$3000 - \$4000



- 23** 1931 Halfpenny (Obv 1/Rev Am). NGC graded MS 64 RD. A Full Red Gem. The finest known example of this key date.

\$10000 - \$12500



- 27** 1935 Halfpenny (Obv 1/Rev Am). NGC graded MS 65 RB. Gem with full colour. The best of date.

\$800 - \$1000



- 24** 1932 Halfpenny (Obv 1/Rev Am). NGC graded MS 65 RB. Gem with consistent colour.

\$1250 - \$1500



- 28** 1936 Halfpenny (Obv 1/Rev Am). NGC graded MS 65 RB. Gem with consistent even colour.

\$600 - \$800



- 25** 1933 Halfpenny (Obv 1/Rev Am). NGC graded MS 64 RB. Choice Uncirculated example which is mostly Red.

\$400 - \$500



- 29** 1938 Halfpenny (Obv 3/Rev Am). NGC graded MS 65 RB. Gem with full colour. One of the finest known.

\$300 - \$400



- 26** 1934 Halfpenny. (Obv 1/Rev Am). NGC graded MS 64 RB. Choice Uncirculated example with reflective surfaces. Mostly Red.

\$400 - \$500



- 30** 1939 Halfpenny (Obv 3/Rev Am). NGC graded MS 64 RB. Choice Uncirculated example which is mostly red.

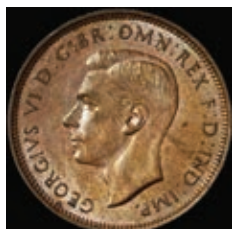
\$300 - \$400



31 1939 Roo Halfpenny. (Obv 3/Rev B). NGC graded MS 65 BN.

The 1939 Halfpenny began with the long standing •COMMONWEALTH OF AUSTRALIA• reverse which commenced in 1911, but at some point during production a new design was introduced featuring a scaled down and inverted version of the kangaroo penny reverse that had been adopted in 1938. Two distinct reverse dies were used for the production of the new 1939 'Roo' Reverse Halfpenny and these reverse types, with observable differences, alternated on halfpennies produced in later years. The original London master die for the 'Roo' reverse is characterised by very detailed fur lines on the paws of the kangaroo and on the underside of the tail, and a series of prominent rib lines found at the juncture of the leg and torso. However, these features may only be visible on early strikes, so the easiest way to distinguish this type is to examine the foot of the 'Y' in 'HALFPENNY' which exhibits a double foot. (The more common 'Roo' reverse struck on an altered die, has much less fine detail on the Kangaroo and is easily identified by the 'Y' on 'HALFPENNY' which is truncated on the right-hand side, and is best described as having a single foot.) Very few of the original 'Rev B' type 1939 'Roo' halfpennies have surfaced and it is an extremely rare coin in uncirculated condition. The 'Benchmark' coin in NGC MS 65 BN is by far the finest known. This Gem example is ex the collection of H. C. (Nugget) Coombs and was probably a presentation piece.

\$25000 - \$35000



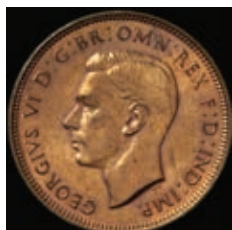
32 1939 Roo - Modified Rev Halfpenny (Obv 3/Rev Bm). NGC graded MS 64 BN. Choice Uncirculated example which is mostly Red.

\$2500 - \$3000



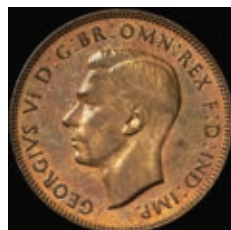
34 1941 Halfpenny (Obv 3/Rev Bm). NGC graded MS 65 RB. Near Gem with full colour. One of the finest known.

\$300 - \$400



33 1940 Halfpenny (Obv 3/Rev Bm). NGC graded MS 64 RB. Choice Uncirculated. A few contact marks on the face but full colour with Proof-like surfaces. Superb.

\$400 - \$500



35 1942 Halfpenny (Obv 3/Rev Bm). NGC graded MS 64 RB. Near Gem with even mint bloom. One of the finest known.

\$2500 - \$3000



- 36 1942Y. Halfpenny (Obv 3/Rev Bm). NGC graded MS 64 BN. Choice Uncirculated example with even colour.

\$100 - \$150



- 40 1943I Halfpenny. (Obv 3/Rev C). NGC graded MS 64 RB. Choice Uncirculated with strong even colour.

\$150 - \$175



- 37 1942I Halfpenny (Obv 3/Rev Bb). NGC graded MS 64 BN. Choice Uncirculated. Dull tone but a superior strike for this coin.

\$100 - \$125



- 41 1944 Halfpenny (Obv 3/Rev Bm). NGC graded MS 64 BN. Near Gem with consistent deep colour.

\$750 - \$1000



- 38 1942 I - Long Reverse Denticles Halfpenny. (Obv 3/Rev C). NGC graded MS 64 RB. Choice Uncirculated with strong even colour. The finest known of this scarce variety.

\$4000 - \$5000



- 42 1945 (Obv 3/Rev Bm). NGC graded MS 64 BN. Choice Uncirculated. A few contact marks but the best colour on this date that we have seen. A superior example.

\$500 - \$750



- 39 1943 Halfpenny (Obv 3/Rev Bm). NGC graded MS 65 RD. Gem with full colour. One of the best of date.

\$400 - \$500



- 43 1945Y. Halfpenny (Obv 3/Rev Bm). NGC graded MS 65 BN. Gem with deep consistent colour. One of the best of date.

\$1250 - \$1500



- 44 1946 Halfpenny (Obv 3/Rev Bm). NGC graded MS 64 RB. Choice Uncirculated. A well-struck example which exhibits a row of lines on the arch of the Kangaroo's back. Amongst the finest known of this interesting variety.

\$400 - \$500



- 45 1947 Halfpenny (Obv 3/Rev Bm). NGC graded MS 64 RB. Choice Uncirculated with strong even colour. One of the best of date.

\$200 - \$250



- 46 1948 Halfpenny (Obv 3/Rev Bm). NGC graded MS 65 RB. Gem with virtually full colour. One of the finest known.

\$400 - \$500



- 47 1948Y. Halfpenny (Obv 3/Rev Bm). NGC graded MS 63 BN. Choice Uncirculated.

\$40 - \$50

- 48 1949Y Halfpenny (Obv 4/Rev Bm).

Withdrawn



- 49 1950Y. Halfpenny (Obv 4/Rev B). NGC graded MS 64 BN. Choice Uncirculated.

\$75 - \$100



- 50 1951 Halfpenny (Obv 4/Rev B). NGC graded MS 63 BN. Choice Uncirculated. The finest graded of this very rare variety.

\$2750 - \$3500



- 51 1951 Halfpenny (Obv 5/Rev B). NGC graded MS 64 RB. Gem. A superior Full Red example free of the usual rust spots.

\$300 - \$400



- 52 1951Y. Halfpenny (Obv 4/Rev B). NGC graded MS 64 BN. Choice Uncirculated.

\$40 - \$50



- 53 1951Y. Halfpenny (Obv 5/Rev B). NGC graded MS 65 RB. Gem. A superior Full Red example free of the usual rust spots.

\$300 - \$400



- 54 1951 PL Halfpenny - Hooked Bar on 'Y'. (Obv 4/Rev B). NGC graded MS 66 RD. Full Red Gem. One of the best of date.

\$500 - \$600



- 55 1952A. Halfpenny (Obv 5/Rev B). NGC graded MS 64 RB. Choice Uncirculated example with even colour. One of the finest known.

\$400 - \$500



- 56 1953A. Halfpenny (Obv 6/Rev B). NGC graded MS 64 RB. Choice Uncirculated with even colour.

\$75 - \$100



- 57 1954Y. Halfpenny (Obv 6/Rev B). NGC graded MS 64 BN. Choice Uncirculated with even colour.

\$30 - \$40



- 58 1955 Halfpenny (Obv 6/Rev B). NGC graded MS 63 RB. Choice Uncirculated with even colour.

\$30 - \$40



- 59 1959 Halfpenny (Obv 7/Rev B). NGC graded MS 67 RD. Full Red Gem. One of the best of date.

\$600 - \$750



- 60 1960Y. Halfpenny (Obv 7/Rev B). NGC graded MS 66 RB. Gem with full mint bloom and attractive rainbow tones. One of the best of date.

\$100 - \$125



- 61 1961Y. Halfpenny (Obv 7/Rev B). NGC graded MS 64 RB. Choice Uncirculated with even colour.

\$20 - \$30



- 62 1962Y. Halfpenny (Obv 7/Rev B). NGC graded MS 66 RB. Gem with full colour. One of the best of date.

\$75 - \$100



- 63 1963Y. Halfpenny (Obv 7/Rev D). NGC graded MS 64 RB. Choice Uncirculated with even colour.

\$20 - \$30



- 64 1964Y. Halfpenny. (Obv 7/Rev D). NGC graded MS 65 RB. Choice Uncirculated with even colour.

\$30 - \$40



- 66 1912H Penny (Obv 1/Rev B). NGC graded MS 65 RB. A virtually Full Red Gem. Carbon spot at 3 o'clock the only detracting feature.

\$3000 - \$4000



- 67 1913 Penny (Obv 1/Rev B). NGC graded MS 65 RB. A mostly Red Gem and one of the best of date.

\$5000 - \$6000



- 68 1914 Penny (Obv 1/Rev B). NGC graded MS 65 BN. Gem. Deep underlying mint bloom with a superior reverse.

\$5000 - \$6000

Penny



- 65 1911 Penny (Obv 1/Rev A). NGC graded MS 66 RD. A Brilliant Red Gem. The pick of the 'Baldwin Hoard'.

\$4000 - \$5000



- 69 1915 Penny (Obv 1/Rev B). NGC graded MS 65 RB. Gem with strong even colour. Best of date.

\$7000 - \$8000



- 70 1915H Penny (Obv 1/Rev B). NGC graded MS 65 RB. Gem with strong even colour. One of the best of date.

\$4000 - \$5000



- 71 1916I Penny (Obv 2/Rev C). NGC graded MS 66 RB. Gem with Proof-like strike and surfaces. One of the finest known and the equal of many a coin that has been sold as a proof.

\$5000 - \$6000



- 72 1917I Penny (Obv 2/Rev C). NGC graded MS 65 RD. Full Red Gem. Rare this nice.

\$4000 - \$5000



- 73 1918I Penny (Obv 2/Rev C). NGC graded MS 65 RB. Gem with Proof-like strike and surfaces and strong consistent colour. One of the finest known.

\$8000 - \$10000



- 74 1919 Penny (Obv 1/Rev B). NGC graded MS 64 RB. A beautifully struck near Gem. The streaky obverse the only detracting feature and in our opinion it is undergraded.

\$1500 - \$1750



- 75 1919 Dot below bottom scroll Penny (Obv 1/Rev Bm). NGC graded MS 65 RB. Gem. Should have been graded Full Red. Amongst the best of date.

\$1500 - \$2000



76 1919 Double dot Penny (Obv 1/Rev Bm). NGC graded AU 58 BN.

In July 1920, the Melbourne Mint sent three pairs of 1919-dated working dies to the Sydney Mint so it could prepare for the ceremonial striking of its first penny in October of that year. These were experimental dies that were lightly used to test the presses for the 1920 Penny production and the reverses were marked with an additional dot above the top scroll to distinguish their production from the Melbourne minted 1919 // Penny. The obverse dies were of the English type, the only ones held by Melbourne at the time. The 1919 .//. Penny that resulted is a scarce coin with perhaps a mintage of around 25,000 and marks the first 'unofficial' Sydney-struck penny. Records show that the 1919 .//. reverse dies were destroyed in 1924. The 'Benchmark' coin, NGC AU 58 BN (Virtually Uncirculated) is the highest Third-party graded example.

\$8000 - \$9000



77 1920 English Obv - Dot below bottom scroll Penny. (Obv 1/Rev C). NGC graded F 15 BN. (Fine.) A better example of this rare variety.

\$400 - \$500



78 1920 Dot below bottom scroll Penny - Indian Obverse. (Obv 2/Rev Cm). NGC graded MS 64 RB. Near Gem with strong even colour.

\$3000 - \$4000



79 1920 Double dot Penny (Obv 2/Rev C). NGC graded MS 63 RB.

The 1920 .//. Penny is a scarce coin thought to be the product of experimental dies used to calibrate the presses for the main production of the 1920 /./ pennies. Few of this small mintage are known to have survived in Uncirculated condition and the 'Benchmark' coin, NGC MS 63 RB, which was ex the famous Jerome Remick collection, is amongst the finest known.

\$25000 - \$35000



80 1920 Plain Penny (Obv 2/Rev C). NGC graded MS 65 RB.

Sydney struck its first 'official' penny at a ceremony held in early October, 1920. In the 1921 publication *Australasian Tokens & Coins*, the author Dr Arthur Andrews assumed that this was a 1920 /./ Penny, but it is more likely that the reverse die used was a 1920 'Plain', ie with no mint mark, as it would have been inappropriate to present dignitaries with coins bearing a mint mark not authorised by the London Mint or the Australian Treasury. The rarity of the 1920 'Plain' Penny in high grade suggests that only one plain reverse die was employed in order to demonstrate the presses. It is likely that the better examples which have survived were souvenired by those in attendance at the ceremony, with some retained for institutional collections. The 'Benchmark' coin, NGC MS 65 RB is the highest Third-party graded example and is a major rarity in the Australian series.

\$75000 - \$100000

- 81 1920 Dot above bottom scroll Penny - English Obv. (Obv 1/Rev C).

Withdrawn



- 82 1920 Indian Obv - Dot above bottom scroll Penny. (Obv 2/Rev C). NGC graded MS 65 RB. Gem with strong even colour. Amongst the finest known.

\$7000 - \$8000



- 83 1920 Indian Obv - Dot above top scroll Penny (Obv 2/Rev C). NGC graded AU 58 BN.

In November 1921, the Perth Mint requested dies from Melbourne so it could experiment with penny production. However, it was the Sydney Mint which responded to this request, sending two sets of 1920-dated dies. There is some evidence that these dies had a './.' mint mark and that the 93,600 coins struck are the first identifiable Perth-struck pennies. The 'Benchmark' coin, NGC AU 58 BN (Virtually Uncirculated) is easily the highest Third-party graded example.

\$12500 - \$15000



- 84 1921 English Obv Penny. (Obv 1/Rev B). NGC graded MS 64 BN. Near Gem example of a scarce variety. Extremely rare in this grade and the finest known. (see accompanying article on the Rare obverses of George V pennies).

\$15000 - \$20000



- 85 1921 Penny - Indian Obv. (Obv 2/Rev B). NGC graded MS 64 RB. Near Gem with strong even colour. Amongst the finest known.

\$3000 - \$4000

- 86 1922 Penny - English Obv. (Obv 1/Rev B).

Withdrawn



- 87 1922 English Obv - Modified Rev Penny. (Obv 1/Rev Bm). NGC graded MS 65 RB. Near Gem with even reflective colour. The finest known of this variety.

\$6000 - \$7500



- 88 1922 Penny - Indian Obv. (Obv 2/Rev B). NGC graded MS 64 BN. Near Gem with even colour. The finest known of this variety.

\$7000 - \$9000



- 89 1922 Indian Obv - Modified Rev Penny. (Obv 2/Rev Bm). NGC graded AU 58 BN. Slightly understruck but plenty of strong even colour. Deserving of an MS grade.

\$250 - \$500



- 90 1923 Penny (Obv 1/Rev A). NGC graded MS 66 RB. A superb Gem that could easily have gone in a Red holder. Best of date.
\$8000 - \$10000



- 91 1924 Penny English Obv (Obv 1/Rev Am). NGC graded MS 65 RB. Gem with virtually full colour. The finest known of this variety.
\$3000 - \$4000



- 92 1924 Indian Obv Penny (Obv 2/Rev Am). NGC graded MS 64 RB. Uncirculated. A rare variety struck by the Sydney Mint on deteriorating dies. Few Mint State examples survive. (see accompanying article on the Rare obverses of George V pennies).
\$12500 - \$15000



- 93 1925 Penny (Obv 1/Rev Am). NGC graded MS 65 BN. A Gem example of this key date with plenty of colour. Extremely Rare this nice and one of the finest known.
\$50000 - \$60000



- 94 1926 Penny (Obv 1/Rev Am). NGC graded MS 64 BN. A Choice Uncirculated coin with strong even colour.

\$2000 - \$2500



- 95 1927 Penny English Obv (Obv 1/Rev Am). NGC graded MS 65 RB. Beautifully struck with reflective surfaces. A superb Gem.

\$1500 - \$2000



- 96 1927 Indian Obv Penny (Obv 2/Rev Am). NGC graded MS 64 BN. Near Gem example of a scarce variety. Extremely rare in this grade and the finest known. (see accompanying article on the Rare obverses of George V pennies).

\$17500 - \$20000



- 97 1928 Penny (Obv 1/Rev Am). NGC graded MS 65 RB. Gem with plenty of colour. Extremely rare in this grade and one of the finest known.

\$8000 - \$10000



- 98 1929 Penny English Obv (Obv 1/Rev Am). NGC graded MS 64 RB. Near Gem with strong even colour. Amongst the finest known.

\$6000 - \$7000



- 99 1929 Indian Obv Penny (Obv 2/Rev Am). NGC graded MS 63 BN. A Choice Uncirculated example of this scarce variety (see accompanying article on the Rare obverses of George V pennies).

\$4000 - \$5000



100 1930 English Obv Penny (Obv 1/Rev Am). NGC graded XF 45 BN.

The 1930 Australian Penny has long held the mantle as the world's most famous copper coin, although when it was struck and in what numbers has long been a topic of discussion.

With the Great Depression taking hold, the Melbourne Mint had received no orders to strike 1930 pennies for circulation, but in July of that year three penny reverse dies were produced for the intended purpose of striking specimens. On August 13, 1930 twelve specimens were struck using one of these reverse dies which was coupled with an Indian obverse die taken from an unused master that had been received directly from London in 1922.

Mint records show that no other pennies were struck in 1930, and it was not until August of the following year that the three 1930 reverses along with both English and Indian obverse dies were used experimentally to test the presses. Production from these dies is recorded as 'nil thousands' which indicates that less than 1,000 coins were struck from each die pairing, which even then appears grossly overstated regarding the English obverse type of which only three surviving examples have surfaced.

The 'Benchmark' coin is the famous 'Daly' coin authenticated by the Royal Australian Mint in 1976. (RAM letter is included).

Graded NGC XF 45 BN (Extremely Fine) it is the finest known example of Australia's rarest circulating coin.

\$300000 - \$400000



- 101 1930 Indian Obv Penny (Obv 2/Rev Am). Graded NGC XF45 BN (Extremely Fine). With a hint of eight pearls evident in the band it is the equal second highest graded. (see accompanying note on the Rare obverses of George V)

\$60000 - \$70000



- 102 1931 English Obv - Dropped 1 Penny (Obv 1/Rev A). NGC graded MS 63 BN. Choice Uncirculated with some colour in the devices.

\$2000 - \$2500

- 103 1931 English Obv Penny (Obv 1/Rev Bm). NGC graded MS 65 RB. Gem with strong even colour. Amongst the finest known.

\$8000 - \$10000



- 104 1931 Indian Obv Penny - Dropped 1 (Obv 2/Rev A). NGC graded AU 55 BN.

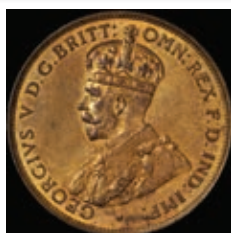
The 'Indian' obverse dies used to produce the majority of 1930 pennies were far from exhausted and legend has it that one was coupled with a 193_ 'London' reverse die (of a type to which an '0' had previously been added to produce the 1930 penny) resulting in the 1931 'Dropped 1' Indian obverse Penny. The addition of the '1' to the 'London' die was certainly mis-aligned resulting in the 'Dropped 1' variety, but a study of the reverse die shows no connection to the 1930 reverse penny die, which like the 1929 'Melbourne altered' reverse on which it appears to be based, exhibits dramatic serifing on the base of the letters in the legend. The 1931 'Dropped 1' reverse on the other hand closely resembles the unaltered 'London' reverse with straight based lettering that was re-introduced on the 1923 Penny. Mint records show 'nil thousand production' of the 1931 'Dropped 1' Indian obverse Penny, i.e. less than 1,000 coins were originally produced of which perhaps a few hundred have survived. This coin is usually found in no better than VG-Fine condition and is extremely rare in higher grades. The 'Benchmark' coin in NGC AU 55 BN (about Uncirculated) is by far the finest known.

\$25000 - \$35000



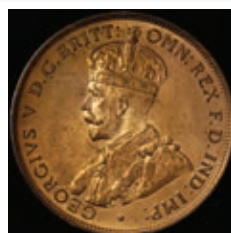
- 105 1931 Indian Obv Penny (Obv 2/Rev Bm). NGC graded MS 62 BN. Difficult to find better than EF. Graded Uncirculated and rare.

\$6000 - \$7500



- 106 1932 Penny (Obv 1/Rev Bm). NGC graded MS 64 RB. Near Gem with virtually full colour. Amongst the finest known.

\$1250 - \$1500



- 107 1933 Penny (Obv 1/Rev Bm). NGC graded MS 65 RB. A Gem and virtually full Mint Red. One of the finest known.

\$1250 - \$1500



- 108 1933/2 Penny - Overdate (Obv 1/Rev Bm). NGC graded MS 65 RB.

Although there is no record of its production, the 1933/2 Penny is undoubtedly the product of the Melbourne Mint altering 1932-dated hubs. The process involved hammering flat the last figure on a hub from which working dies could be lifted and the date re-punched. The Mint had employed this process previously on the 1925/3 Shilling and the 1922/1 Threepence, but why it undertook it in 1933 when penny production was a very robust 6,781,800 coins is a mystery. A possible explanation was that retiring staff were called upon to impart their knowledge of this skill before their departure. Collectors claim there are four distinguishable varieties that show different degrees of the 2 showing through, which suggests multiple experimental dies and a mintage of perhaps 200,000. The 'Benchmark' coin, NGC MS 65 RB is the best surviving example of this overdate. A virtually Full Mint Red Gem.

\$25000 - \$35000



- 109 1934 Penny (Obv 1/Rev Bm). NGC graded MS 64 RB. Near Gem with virtually full colour. Amongst the finest known.**

\$600 - \$750



- 110 1935 Penny (Obv 1/Rev Bm). NGC graded MS 65 RB. Gem with virtually full colour. Amongst the finest known.**

\$1250 - \$1500



- 111 1936 Penny (Obv 1/Rev Bm). NGC graded MS 65 RB. Near Gem with virtually full colour. Amongst the finest known.**

\$800 - \$1000



- 112 1938 Penny (Obv 3/Rev D). NGC graded MS 65 RB. Near Gem with strong even colour. Amongst the finest known.**

\$600 - \$800

The 'Rare' Penny obverses of George V

The 'rare' obverse types that appear on some dates of George V pennies were noted in the early Renni's Australian coin catalogues of the 1960s, but have since been largely ignored by most collectors because of their absence from current coin catalogues.

Just like the mint marks appearing on Australian coins the obverse varieties can also be relied upon to identify the source of the coins and so equally deserve their place in a complete Australian coin collection.

On evidence, it appears that the extremely rare 'English Obverse' 1920 ./ Penny was Sydney-struck while the rare 'English Obverse' 1920 //. Penny was a product of the Melbourne Mint. It is also speculated that the 1921 'English Obverse' Penny was struck by the Perth Mint but whether it was Perth or Melbourne-struck it is extremely rare in high grade. The 'Benchmark' coin, NGC MS64 BN is the finest known.

There are also two varieties of the 'English obverse' 1922 pennies struck by the Melbourne Mint as well as two varieties of the 1922 'Indian Obverse' pennies which were both Perth-struck. The 1922 'Indian' Penny with the unaltered reverse is rare in grade and the 'Benchmark' coin in NGC MS64 BN is the highest graded.

Certainly, if you are looking to add a Sydney-struck 1924 Penny to your collection then it is the 1924 'Indian Obverse die' Penny that is required. This coin although relatively common in average grade is a major rarity in uncirculated condition. The 'Benchmark' coin, NGC MS64 RB will be hard to better.

Although both the 'English' and 'Indian' die 1927 pennies were struck at the Melbourne Mint, the latter was stuck on working dies returned to Melbourne by the Sydney Mint on its closure in 1926. The 1927 'Indian obverse' Penny is very scarce in low grade and virtually unknown in uncirculated condition. The 'Benchmark' coin, NGC MS64 BN is the highest graded.

Conversely, it is the 1929 'English Obverse' Penny that is the more common variety struck by the Melbourne Mint. In that year, die-life for penny production had sharply deteriorated with averages falling to 46,000 coins for reverse dies and 34,000 for obverse dies, and so the Melbourne Mint began to investigate ways to overcome this problem. A number of experimental dies were produced including one 'Indian Obverse' die that was taken from an unused master die sent to Melbourne directly from London in 1922. This die was not connected to the dies used on the earlier 'Indian Obverse' pennies which were sourced from Calcutta in 1920. Based on the averages achieved from dies at the time, the 'Indian Obverse' 1929 Penny is a scarce coin which is difficult to find in high grade. The 'Benchmark' coin, NGC MS63 BN is amongst the finest known.

The 'Indian obverse' die was not discarded after the 1929 experiment but was later used to strike the vast majority of 1930 pennies. Of approximately 1500 that were struck about 800 have survived mostly in VG – Fine condition. The Benchmark coin is a standout NGC XF45 BN and is the second highest Third-party graded. However it is the 'English obverse' 1930 Penny, which is the much rarer type with just three examples discovered to date. This is undoubtedly Australia's rarest circulating coin and the Benchmark coin, NGC XF45 BN is the best of the type.



- 113** 1939 Penny (Obv 3/Rev D). NGC graded MS 64 RB. Near Gem with strong even colour and Proof-like surfaces.

\$300 - \$400



- 117** 1941 Penny (Obv 3/Rev D). NGC graded MS 65 RD. Full Red Gem. The finest graded.

\$2000 - \$2500



- 114** 1940 Penny (Obv 3/Rev D). NGC graded MS 65 RB. Gem with virtually full colour. Amongst the finest known.

\$1250 - \$1500



- 118** 1941 K.G Penny (Obv 3/Rev D). NGC graded MS 64 RB. Near Gem. Sharply-struck with plenty of even colour. If you count strike it is the finest known.

\$2500 - \$3000



- 119** 1941Y. Penny (Obv 3/Rev D). NGC graded MS 64 RB. Near Gem. A slightly muted obverse with a superior reverse. Amongst the finest known.

\$600 - \$700



- 115** 1940 K.G - Low Dot Penny (Obv 3/Rev D). NGC graded MS 63 BN. A Choice Uncirculated example of this scarce variety.

\$4000 - \$5000



- 120** 1942Y. Penny (Obv 3/Rev D). NGC graded MS 65 RB. Near Gem with strong colour. Amongst the finest known.

\$1000 - \$1250



- 116** 1940 K.G Penny (Obv 3/Rev D). NGC graded MS 64 BN. An attractive near Gem with plenty of even colour. Amongst the finest known.

\$4000 - \$5000



- 121** 1942I Penny (Obv 4/Rev E). NGC graded MS 63 RB. Choice Uncirculated. Nice colour without the usual fingerprints.

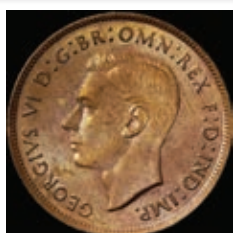
\$100 - \$150



122 1942I Penny - Missing 'I' (Obv 4/Rev E). NGC graded MS 65 BN.

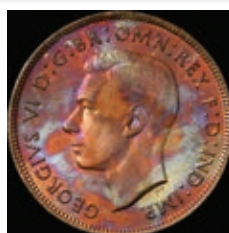
Of the 9,000,007 pennies struck by the Bombay Mint in 1942 a very small number have no 'I' mint mark on the obverse. This is definitely not the result of a filled die as is evidenced by the existence of a few high grade survivors. This mint error is very scarce in average circulated condition and rare in high grade. The 'Benchmark' coin in NGC MS 65 BN is a Gem and the highest Third-party graded example of this scarce variety.

\$7000 - \$9000



123 1943 Penny (Obv 3/Rev D). NGC graded MS 65 BN. A superb Gem.

\$400 - \$500



124 1943Y. Penny (Obv 3/Rev D). NGC graded MS 64 RB. Near Gem with unusual rainbow tones.

\$400 - \$500



125 1943I Penny - Long Rev Denticles. (Obv 4/Rev E). NGC graded MS 64 BN.

The 1943 'I' pennies were struck on two distinctive reverse dies. Like the 1942 'I' pennies the early 1943 'I' pennies are distinguished by long reverse edge denticles. The denticles were reduced in size on the later coins which make up the large majority of the mintage. The 'long denticle' variety is scarce in average grade but is very rare in Uncirculated condition. The 'Benchmark' coin in NGC MS 64 BN is one of the better surviving examples. A near Gem.

\$12500 - \$15000



- 126 1943I Penny - Short Rev Denticles. (Obv 4/Rev E(i)). NGC graded MS 65 RB. Gem. Nice colour without the usual fingerprints.

\$500 - \$600



- 128 1944Y. Penny (Obv 3/Rev D). NGC graded MS 64 RB. Near Gem with plenty of colour. Amongst the finest known.

\$300 - \$400



- 127 1944 Penny (Obv 3/Rev D). NGC graded MS 64 RB. Near Gem with strong even colour. Amongst the finest known.

\$2000 - \$2500



- 129 1945Y. Penny (Obv 3/Rev D). NGC graded MS 64 BN. Near Gem with beautiful surfaces.

\$200 - \$300



- 130 1946 Penny (Obv 3/Rev D). NGC graded MS 65 RB. A Gem. The key date of the George VI pennies and none have been graded higher.

\$7000 - \$9000



- 131 1946 K.G Penny (Obv 3/Rev D). NGC graded MS 64 RB.

The 1946 Penny, with a mintage of just 363,600, has always been considered a key coin in the Australian penny series, but within this small number there appears to be an extremely rare variety with a 'K.G' mint mark. A possible explanation for its existence is that the 1946 'K.G' penny was the result of experimental dies tested by Melbourne in anticipation that the Perth Mint might be called upon to produce coins for that year. Perth Mint had already been asked to strike its first and only silver coin, the 1946 shilling which was marked with a new '•S' mint mark. The initial 'K.G' mint mark that distinguished a Perth struck penny had been replaced at some point in 1941 by the 'Y' mark, but the interchanging of mint marks is not uncommon in the Australian series. For example, the established 'Y' Perth mint mark was replaced by an 'A•' mint mark in 1952 and 1953 before the 'Y' mark was adopted again on the 1955 Perth Penny. The 1946 'K.G' Penny is undoubtedly Melbourne-struck and should be considered a rare sub-set in the scarce 1946 issue. The 'Benchmark' coin in NGC MS 64 RB is one of the finest known. A near Gem.

\$12500 - \$15000



- 132** 1947 Penny (Obv 3/Rev D). NGC graded MS 65 RB. A superb Gem that could easily have gone in a Red holder. One of the finest known.
- \$150 - \$200**



- 133** 1947Y. Penny (Obv 3/Rev D). NGC graded MS 63 RB. Choice Uncirculated with plenty of even colour.
- \$1000 - \$1250**



- 134** 1948 Penny (Obv 3/Rev D). NGC graded MS 65 RB. Near Gem. Should have made it to a Red holder.
- \$200 - \$250**



- 135** 1948Y. Penny (Obv 3/Rev D). NGC graded MS 64 RB. A key coin in the series. Near Gem and rare with this much colour.
- \$6000 - \$7500**



- 136** 1949 Penny (Obv 5/Rev D). NGC graded MS 64 RB. Near Gem.
- \$50 - \$75**



- 137** 1950 Penny (Obv 5/Rev D) NGC graded MS 65 RB. Near Gem. Should have made it to a Red holder.
- \$100 - \$125**



- 138** 1950Y. Penny (Obv 5/Rev D) NGC graded MS 64 BN. Near Gem and scarce.
- \$300 - \$350**



- 139** 1951 Penny (Obv 5/Rev D) NGC graded MS 65 RB. Brilliant Gem.
- \$100 - \$125**



- 140** 1951Y. Penny (Obv 5/Rev D) NGC graded MS 64 RB. Near Gem and scarce with this much colour.
- \$600 - \$700**



- 141** 1951PL Penny (Obv 5/Rev F) NGC graded MS 65 RD. Gem. An affordable Red coin.

\$150 - \$175



- 142** 1952 Penny (Obv 5/Rev D) NGC graded MS 65 RD. A Red Gem. They don't come any better.

\$150 - \$175



- 143** 1952A. Penny (Obv 5/Rev D) NGC graded MS 63 RB. Choice Uncirculated with typical Perth colour.

\$50 - \$75



- 144** 1952A. Penny (Obv 5/Rev F) NGC graded MS 65 RB. Gem with full Perth colour.

\$75 - \$100



- 145** 1953 Penny (Obv 6/Rev D) NGC graded MS 65 RB. Near Gem with strong even colour.

\$100 - \$125



- 146** 1953 Penny - Sans Serif. (Obv 6/Rev Fm) NGC graded AU 58 BN. This about Uncirculated coin is the highest Third-party graded example of this scarce variety. Rare this nice.

\$600 - \$750



- 147** 1953A. Penny (Obv 7/Rev F) NGC graded MS 65 RB. Gem with full Perth colour. One of the finest known.

\$125 - \$150



- 148** 1955 Penny (Obv 8/Rev Fm) NGC graded MS 66 RD. A Red Gem. They don't come any better.

\$600 - \$700



- 149** 1955Y. Penny - Wide '5 5' (Obv 8/Rev F) NGC graded MS 64 BN. Choice Uncirculated.

\$30 - \$40



- 150** 1955Y. Penny - Closed '55' (Obv 8/Rev F). NGC graded MS 62 RB. Uncirculated.

\$30 - \$40



- 155** 1957Y. Penny (Obv 9/Rev F). NGC graded MS 63 BN. Choice Uncirculated example of this scarce variety.

\$400 - \$500



- 151** 1955Y. Penny - Wide '5 5' (Obv 9/Rev F). NGC graded MS 62 BN. Uncirculated. The highest graded example of this rare variety.

\$1250 - \$1500



- 156** 1957Y. Penny (Obv 9/Rev Fp). NGC graded MS 65 RB. Gem with typical Perth colour.

\$100 - \$125



- 152** 1956 Penny (Obv 8/Rev Fm). NGC graded MS 65 RD. A Red Gem. They don't come any better.

\$300 - \$400



- 157** 1958 Penny (Obv 8/Rev Fm). NGC graded MS 65 RD. A Red Gem. They don't come any better.

\$250 - \$300



- 153** 1956Y. Penny (Obv 8/Rev Fp). NGC graded MS 63 BN. Uncirculated.

\$30 - \$40



- 158** 1958Y. Penny (Obv 9/Rev Fp). NGC graded MS 64 RB. Near Gem with strong colour.

\$50 - \$60



- 154** 1956Y. Penny (Obv 9/Rev Fp). NGC graded MS 62 BN. Uncirculated.

\$30 - \$40



- 159** 1959 Penny (Obv 8/Rev Fm). NGC graded MS 65 RB. Gem. A high grade example of this scarce coin.

\$800 - \$1000



- 160 1959Y. Penny (Obv 9/Rev Fp). NGC graded MS 63 BN. Choice Uncirculated. Subdued obverse with better reverse. Typical Perth colour.
\$20 - \$30



- 166 1964Y. Penny (Obv 9/Rev Fp). NGC graded MS 65 RB. Gem with a superior strike.
\$150 - \$200



- 161 1960Y. Penny (Obv 9/Rev Fp). NGC graded MS 64 RB. Near Gem with strong even colour.
\$30 - \$40

Threepence



- 167 1910 Threepence (Obv 1/Rev A). NGC graded MS 65. A perfectly struck Gem.
\$500 - \$600



- 162 1961Y. Penny (Obv 9/Rev Fp). NGC graded MS 65 RB. Gem with strong even colour.
\$100 - \$125

- 163 1962Y. Penny (Obv 9/Rev Fp). **Withdrawn**



- 164 1963Y. Penny (Obv 9/Rev Fp). NGC graded MS 64 RB. Near Gem with strong even colour.
\$20 - \$30



- 165 1964 Penny (Obv 8/Rev D). NGC graded MS 64 RB. Near Gem with strong even colour.
\$20 - \$30



- 168 1911 Threepence (Obv 2/Rev B). NGC graded MS 67. Gem. Selected for its perfect strike.
\$4000 - \$5000



- 169 1912 Threepence (Obv 2/Rev B). NGC graded MS 66. A Gem, and none graded higher.
\$7500 - \$10000



- 170** 1914 Threepence (Obv 2/Rev B). NGC graded MS 66. Gem. A centered strike which is not typical of this date which often has weak rims. The finest known.

\$10000 - \$12500



- 171** 1915 Threepence (Obv 2/Rev B). NGC graded MS 65. The 1915 Threepence is the key coin in the Australian Threepence series and the 'Benchmark' coin NGC MS 65 is on grade and strike the finest known. Most uncirculated coins of this date suffer from being softly struck on the 'second set of pearls' in the crown. The 'Benchmark' 1915 Threepence is crisply struck and virtually mark free. A natural Gem.

\$15000 - \$17500



- 172** 1916M Threepence (Obv 2/Rev B). NGC graded MS 66. The 1916 M Threepence was the first of this denomination struck in Australia on working dies sent from London. Although we think that the coin is undergraded the 'Benchmark' coin in NGC MS 66 still ranks as one of the best of the date. This flawless coin in our estimation is probably the finest known George V threepence. A lightly toned Gem.

\$7500 - \$10000



- 173** 1917M Threepence (Obv 2/Rev B). NGC graded MS 67. A brilliant Gem. If you don't appreciate toning then this is the type coin for you.

\$7000 - \$9000



174 1918M Threepence (Obv 2/Rev B). NGC graded MS 65. A brilliant near Gem.

\$2000 - \$2500



175 1919M Threepence (Obv 2/Rev B). NGC graded MS 66. A brilliant Gem.

\$4000 - \$5000



176 1920M Threepence (Obv 2/Rev B). NGC graded MS 66. Near Gem. Attractively toned and the best of date.

\$10000 - \$12500



177 1921M Threepence (Obv 2/Rev B). NGC graded MS 65. Gem. Darkly toned but perfect.

\$1250 - \$1500



178 1921 Threepence (Obv 2/Rev B). NGC graded MS 66. A superior Gem. Unlike most threepences of this date the obverse was not struck on a rusty die. By far the best of date.

\$12500 - \$15000



179 1922 Threepence (Obv 2/Rev B). NGC graded MS 65. Gem. A superior example. Dark toning but perfect.

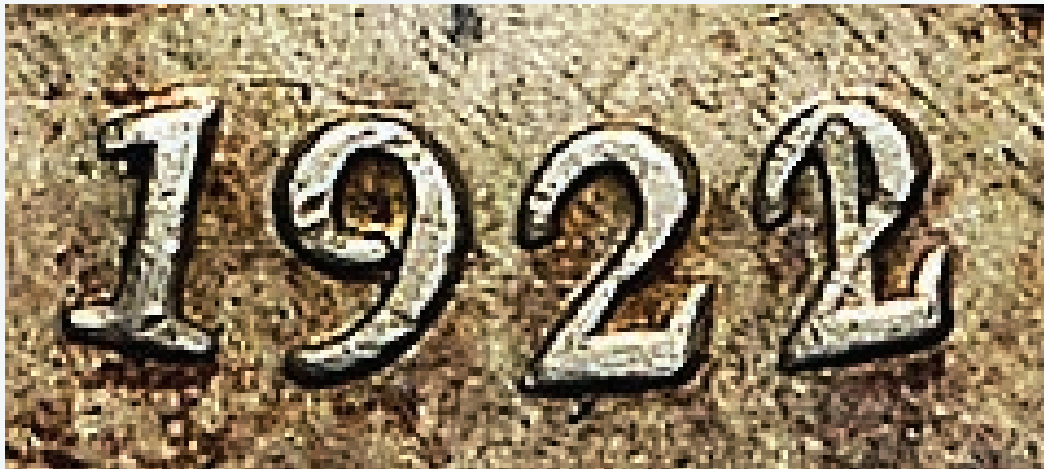
\$2500 - \$3000

180 SEE NEXT PAGE FEATURE



181 1923 Threepence (Obv 2/Rev B). NGC graded MS 63. Choice Uncirculated. A few minor obverse marks but the reverse is sharply struck which is not found on most threepences of this date.

\$3000 - \$4000



180 1922/1 Threepence - Overdate (Obv 2/Rev B). NGC graded AU 58.

The 1922/1 Overdate Threepence is a controversial coin appearing to be an early experiment by the Melbourne Mint to alter the date on a die. It is thought that in this instance the last figure on a working hub was simply hammered flat and a new figure was roughly re-entered on the ensuing die while it was still soft. Melbourne Mint had been experimenting with die work on pennies as early as 1919 and on the dies for the 1921 silver threepences and sixpences from which it had removed mint marks. It is known that in 1922 the Melbourne Mint did not have the figure punches needed to alter dies, so either the mint fashioned its own tool or these unrecorded coins were struck in early 1923 when the punches were available. What is certain is that this overdate is the product of just one reverse die, as all examples have the same diagnostic pimple of metal in the reverse field at the juncture of the legs of the kangaroo, which may not be apparent on worn examples. The 'Benchmark' coin in AU 58 (Virtually Uncirculated) is the equal finest known of this rare 'overdate'.

\$115000 - \$125000



182 1924 Threepence (Obv 2/Rev B). NGC graded MS 66. Gem. Best of date.

\$12500 - \$15000



185 1927 Threepence (Obv 2/Rev B). NGC graded MS 65. Gem. Darkly toned but near perfect.

\$1250 - \$1500



183 1925 Threepence (Obv 2/Rev B). NGC graded MS 66. Gem. Attractively toned and one of the best of date.

\$4000 - \$5000



186 1928 Threepence (Obv 2/Rev B). NGC graded MS 64. Choice Uncirculated. Dark but almost mark free.

\$800 - \$900



184 1926 Threepence (Obv 2/Rev B). NGC graded MS 66. A stunning Gem. The finest known.

\$2250 - \$2750



187 1934 Threepence (Obv 2/Rev B). NGC graded MS 67. A brilliant Gem.

\$3000 - \$4000



188 1934/3 Threepence Overdate (Obv 2/Rev B). NGC graded MS 66. Although no 1933 threepences were struck for circulation, a master die was prepared and later altered to produce the 1934/3 Overdate. It is far more common than the 1922/1 Threepence being the product of more than one working die, but it is still only a small part of the overall mintage for 1934. It is estimated that about 50,000 of the 3,404,000 threepences dated 1934 are overdates. The 'Benchmark' coin, which is graded NGC MS 66 is the equal finest known and notably does not have the heavy die-polish marks often found on many Uncirculated examples. A Gem.

\$25000 - \$30000



- 189 1935 Threepence (Obv 2/Rev B). NGC graded MS 66. A lightly toned Gem.
\$2000 - \$2500



- 192 1939 Threepence (Obv 3/Rev C). NGC graded MS 66. A bright Gem.
\$1000 - \$1250



- 190 1936 Threepence (Obv 2/Rev B). NGC graded MS 67. A perfect Gem. An early Specimen-strike with mirror fields and light frosting on the design.
\$2000 - \$2500



- 193 1940 Threepence (Obv 3/Rev C). NGC graded MS 65. A lightly toned Gem.
\$800 - \$900



- 191 1938 Threepence (Obv 3/Rev C). NGC graded MS 65. A brilliant Gem.
\$300 - \$400



- 194 1941 Threepence (Obv 3/Rev C). NGC graded MS 65. A bright Gem.
\$400 - \$500



- 195 1942 Threepence (Obv 3/Rev C). NGC graded MS 64. The 1942 Threepence holds the mantle as the most difficult coin of George VI to acquire in high grade. With a mintage of just 380,000 few have survived in Uncirculated condition. The 'Benchmark' coin NGC MS 64 is a lightly toned natural Gem that is arguably the finest known.
\$12500 - \$15000



- 196 1942D Threepence (Obv 3/Rev C). NGC graded MS 66. A brilliant Gem.
\$300 - \$400



- 201 1944S Threepence - Serif 'S'. (Obv 3/Rev C). NGC graded MS 65. A toned Gem.
\$75 - \$100



- 197 1942S Threepence (Obv 3/Rev C). NGC graded MS 64. A brilliant near Gem.
\$75 - \$100



- 202 1944S Threepence - Plain 'S'. (Obv 3 - Rev C). NGC graded MS 66. A brilliant Gem.
\$150 - \$200



- 198 1943 Threepence (Obv 3/Rev C). NGC graded MS 65. A lightly toned Gem.
\$175 - \$200



- 203 1947 Threepence (Obv 3/Rev C). NGC graded MS 65. Near Gem. Key date.
\$300 - \$400



- 199 1943D Threepence (Obv 3/Rev C). NGC graded MS 66. A partially toned near Gem.
\$150 - \$200



- 204 1948 Threepence (Obv 3/Rev C). NGC graded MS 67. A lightly toned Gem.
\$400 - \$500



- 200 1943S Threepence (Obv 3/Rev C). NGC graded MS 65. A partially toned near Gem.
\$500 - \$600



- 205 1949 Threepence (Obv 4/Rev C). NGC graded MS 65. A bright Gem.
\$100 - \$125



206 1950 Threepence (Obv 4/Rev C). NGC graded MS 65. A lightly toned Gem.

\$75 - \$100



211 1954 Threepence (Obv 5/Rev C). NGC graded MS 66. A lightly toned Gem.

\$600 - \$750



207 1951 Threepence (Obv 4/Rev C). NGC graded MS 65. A lightly toned near Gem.

\$125 - \$150



212 1955 Threepence (Obv 6/Rev C). NGC graded MS 66. A lightly toned Gem.

\$150 - \$175



208 1951PL Threepence (Obv 4/Rev D). NGC graded MS 66. A brilliant Gem.

\$150 - \$200



213 1956 Threepence (Obv 6/Rev C). NGC graded MS 64. A lightly toned near Gem.

\$20 - \$30



209 1952 Threepence (Obv 4/Rev C). NGC graded MS 66. A brilliant Gem.

\$200 - \$250



214 1957 Threepence (Obv 6/Rev C). NGC graded MS 64. A lightly toned near Gem.

\$20 - \$30



210 1953 Threepence (Obv 5/Rev C). NGC graded MS 66. A lightly toned Gem.

\$400 - \$500



215 1958 Threepence (Obv 6/Rev C). NGC graded MS 64. A lightly toned near Gem.

\$20 - \$30



- 216 1959 Threepence (Obv 6/Rev C). NGC graded MS 64. A lightly toned near Gem.

\$20 - \$30



- 221 1964 Threepence (Obv 6/Rev C). NGC graded MS 65. A brilliant Gem.

\$20 - \$30



- 217 1960 Threepence (Obv 6/Rev C). NGC graded MS 64. A lightly toned near Gem.

\$20 - \$30

Sixpence



- 222 1910 Sixpence (Obv 1/Rev A). NGC graded MS 65. Dark tone but a Gem. The underlying surfaces are near perfect.

\$1000 - \$1250



- 218 1961 Threepence (Obv 6/Rev C). NGC graded MS 65. A lightly toned near Gem.

\$20 - \$30



- 223 1911 Sixpence (Obv 2/Rev A). NGC graded MS 66. A sharply struck Gem. The finest known.

\$12500 - \$15000



- 219 1962 Threepence (Obv 6/Rev C). NGC graded MS 66. A bright Gem.

\$20 - \$30



- 224 1912 Sixpence (Obv 2/Rev A). NGC graded MS 64. Although the obverse has patchy toning the underlying surfaces are perfect. A Gem and in our opinion harshly graded.

\$5000 - \$6000



- 220 1963 Threepence (Obv 6/Rev C). NGC graded MS 64. A lightly toned near Gem.

\$20 - \$30



- 225 1914 Sixpence (Obv 2/Rev A). NGC graded MS 65. A superior strike for this date with full feathers on the emu. A Gem and one of the finest known.**

\$10000 - \$12500



- 226 1916 Sixpence (Obv 2/Rev A). NGC graded MS 68. The 1916 Sixpence was the first date struck at the Melbourne Mint and the working dies supplied by London were suitably marked with an 'M' mint mark. To celebrate the event proofs of all the silver denominations were struck and presented to dignitaries. The 'Benchmark' coin NGC MS 68, was struck for circulation not presentation and holds the highest grade achieved on a circulating Australian pre-decimal coin. A classic Gem.**

\$40000 - \$50000



- 227 1917 Sixpence (Obv 2/Rev A). NGC graded MS 67. The best of date and a perfect Gem. A Type Coin for the connoisseur.**

\$20000 - \$25000



- 228** 1918 Sixpence (Obv 2/Rev A). NGC graded MS 65. A beautifully toned Gem and a perfect match to the 1918 Florin in the collection.
\$10000 - \$15000



- 232** 1922 Sixpence (Obv 2/Rev A). NGC graded MS 64. A near Gem with the usual die-cracking.
\$4500 - \$5500



- 229** 1919 Sixpence (Obv 2/Rev A). NGC graded MS 64. A brilliant near Gem.
\$3000 - \$4000



- 233** 1923 Sixpence (Obv 2/Rev B). NGC graded MS 65. A Proof-like strike with high rims. A Gem.
\$8000 - \$10000



- 230** 1920 Sixpence (Obv 2/Rev A). NGC graded MS 66. A lightly toned Gem. Best of date.
\$15000 - \$20000



- 234** 1924 Sixpence (Obv 2/Rev B). NGC graded MS 65. A lightly toned Gem. Equal to the finest known.
\$10000 - \$12500



- 231** 1921 Sixpence (Obv 2/Rev A). NGC graded MS 65. Dark tone but a Gem. The underlying surfaces are near perfect. In our opinion undergraded.
\$3000 - \$4000

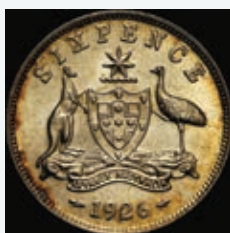
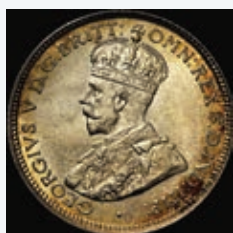


- 235** 1925 Sixpence (Obv 2/Rev B). NGC graded MS 64. A darkly toned Gem but the underlying surfaces appear perfect. In our opinion undergraded.
\$2000 - \$2500



- 236** 1926 Sixpence - Serif on '2' (Obv 2/Rev B(i)). NGC graded MS 64. A small number of the 1926 sixpences were struck on the re-used proof dies and show a serif on the base of the '2' in the date. The 'serifed 2' was first used on the 1920 Sixpence and last appeared on the 1928 Sixpence, but for some reason was not used on the major production run of the 1926 sixpences which have a straight bar on the base of the '2'. The 1926 Sixpence with the 'serifed 2' is the much rarer variety and is further distinguished by the strong curvature to the base of lettering in the legend which again does not occur on the other variety of the date. It is probably the product of one reverse die and has a mintage of perhaps 100,000. The 'Benchmark' coin NGC MS 64 is one of the finest known. A near Gem.

\$6000 - \$7500



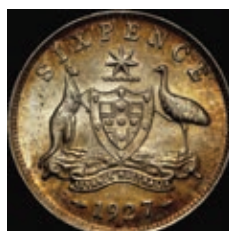
- 237** 1926 Sixpence - Flat base on '2' (Obv 2/Rev B(ii)). NGC graded MS 64. Gem. Only a couple of light marks and undergraded in our opinion.

\$1500 - \$2000



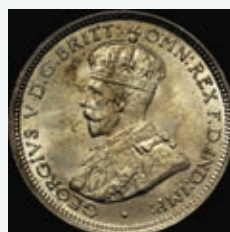
- 239** 1928 Sixpence (Obv 2/Rev B). NGC graded MS 66. A virtually perfect Gem. None have graded higher.

\$3500 - \$5000



- 238** 1927 Sixpence (Obv 2/Rev B). NGC graded MS 66. Mottled toning disguises a near perfect Gem. One of the finest known.

\$3500 - \$5000



- 240** 1934 Sixpence (Obv 2/Rev B). NGC graded MS 67. A Gem. Best of date.

\$12500 - \$15000



- 241** 1935 Sixpence (Obv 2/Rev B). NGC graded MS 66. A Gem and one of the finest known.
\$10000 - \$12500



- 242** 1936 Sixpence (Obv 2/Rev B). NGC graded MS 67. A Brilliant Gem. Best of date.
\$3500 - \$5000



- 243** 1938 Sixpence (Obv 3/Rev B). NGC graded MS 66. Virtually mark free. A Gem and one of the finest known.
\$1000 - \$1250



- 244** 1939 Sixpence (Obv 3/Rev B). NGC graded MS 66. A perfect Gem. The finest known.
\$5000 - \$6000



- 245** 1940 Sixpence (Obv 3/Rev B). NGC graded MS 65. Superior surfaces and almost perfect. Gem.
\$1750 - \$2000



- 246** 1941 Sixpence (Obv 3/Rev B). NGC graded MS 65. A Proof-like Gem. One of the finest known.
\$800 - \$900



- 247** 1942 Sixpence (Obv 3/Rev B). NGC graded MS 65. A lightly toned Gem. One of the finest known.
\$600 - \$750



- 248** 1942D Sixpence (Obv 3/Rev B). NGC graded MS 66. A Gem and one of the finest known.
\$600 - \$750



- 249** 1942S Sixpence (Obv 3/Rev B). NGC graded MS 66. A near perfect Gem and one of the finest known.
\$1000 - \$1250



- 250 1943D Sixpence (Obv 3/Rev B). NGC graded MS 66. A near perfect Gem and one of the finest known.

\$600 - \$750



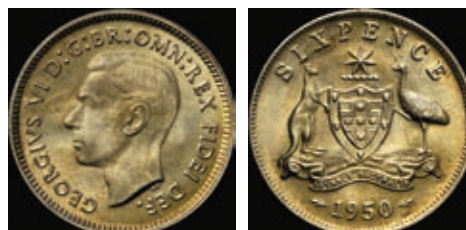
- 255 1948 Sixpence (Obv 3/Rev B). NGC graded MS 66. A bright Gem. Amongst the finest known.

\$600 - \$750



- 251 1943S Sixpence (Obv 3/Rev B). NGC graded MS 66. Lightly toned but virtually perfect. A Gem.

\$1000 - \$1250



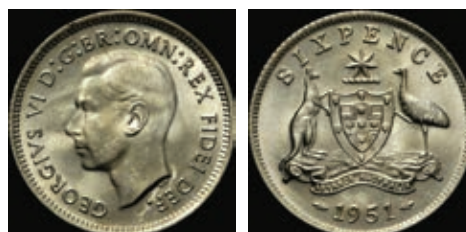
- 256 1950 Sixpence (Obv 4/Rev B). NGC graded MS 66. Gem. Currently best of date.

\$600 - \$750



- 252 1944S Sixpence (Obv 3/Rev B). NGC graded MS 63. Uncirculated.

\$100 - \$125



- 257 1951 Sixpence (Obv 4/Rev B). NGC graded MS 65. Near Gem. Difficult to find better.

\$300 - \$400



- 253 1945 Sixpence (Obv 3/Rev B). NGC graded MS 65. A near perfect Gem.

\$300 - \$350



- 258 1951PL Sixpence (Obv 4/Rev C). NGC graded MS 63. Choice Uncirculated.

\$20 - \$30



- 254 1946 Sixpence (Obv 3/Rev B). NGC graded MS 63. Choice Uncirculated.

\$75 - \$100



- 259 1952 Sixpence (Obv 4/Rev B). NGC graded MS 66. A natural Gem. The best of date.

\$4000 - \$5000



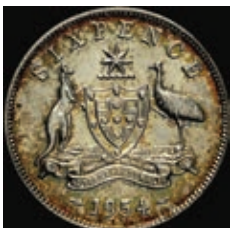
260 1953 Sixpence (Obv 5/Rev B). NGC graded MS 64. Choice Uncirculated. A key date.

\$400 - \$500



265 1958 Sixpence (Obv 6/Rev B). NGC graded MS 66. A near perfect Gem.

\$150 - \$200



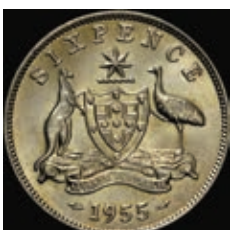
261 1954 Sixpence (Obv 5/Rev B). NGC graded MS 65. A perfect Gem.

\$75 - \$100



266 1959 Sixpence (Obv 6/Rev B). NGC graded MS 66. Proof-like Gem.

\$250 - \$300



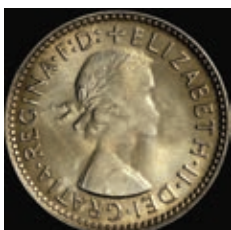
262 1955 Sixpence (Obv 6/Rev B). NGC graded MS 63. Choice Uncirculated.

\$40 - \$50



267 1960 Sixpence (Obv 6/Rev B). NGC graded MS 64. Choice Uncirculated.

\$75 - \$100



263 1956 Sixpence (Obv 6/Rev B). NGC graded MS 65. A near perfect Gem.

\$300 - \$400



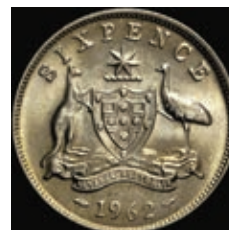
268 1961 Sixpence (Obv 6/Rev B). NGC graded MS 66. A near perfect Gem.

\$150 - \$200



264 1957 Sixpence (Obv 6/Rev B). NGC graded MS 67. A perfect Gem.

\$400 - \$500



269 1962 Sixpence (Obv 6/Rev B). NGC graded MS 65. A near perfect Gem.

\$20 - \$30

Shilling



270 1963 Sixpence (Obv 6/Rev B). NGC graded MS 63. Proof-like near Gem.

\$20 - \$30



271 1910 Shilling (Obv 1/Rev A). NGC graded MS 64. Dark but a near Gem. Only some light obverse field marks detract.

\$750 - \$1000



272 1911 Shilling (Obv 2/Rev A). NGC graded MS 65. A near perfect Gem. Ex Remick collection and one of the finest known.

\$12500 - \$15000



273 1912 Shilling (Obv 2/Rev A). NGC graded MS 65. A lightly toned Gem. Previously graded by PCGS as MS65. Best of date.

\$30000 - \$35000



274 1913 Shilling (Obv 2/Rev A). NGC graded MS 65. A lightly toned Gem. Previously graded by PCGS as MS 65. One of the finest known.

\$20000 - \$25000



275 1914 Shilling (Obv 2/Rev A). NGC graded MS 65. A near perfect Gem. Ex Remick collection. The best of date.

\$8000 - \$10000



276 1915 Shilling (Obv 2/Rev A). NGC graded MS 65. The 'Benchmark' 1915 Shilling once graced the collection of Roy Farman a noted Melbourne collector active from the 1940s. It is an exact match in colour to the 1915 Florin from the same collection which was obviously put away at the same time and similarly stored. The iridescent old world colour adds immeasurably to its appearance. Graded by NGC as MS 65 it is the finest known and the perfect type coin. A Gem.

\$35000 - \$45000



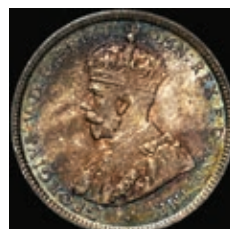
277 1915H Shilling (Obv 2/Rev A). NGC graded MS 65. The 1915 H Shilling has long been regarded as the key to the Australian pre-decimal coin series. Most coins of the date are poorly struck especially on the reverse which is usually flat in the design showing little fine detail on the kangaroo and emu alongside the 'Coat of Arms'. The 'Benchmark' coin, NGC MS 65 is the highest graded and is well struck with full feathers showing on the emu. It is the finest known in terms of quality and strike. A Gem.

\$50000 - \$60000



278 1916 Shilling (Obv 2/Rev A). NGC graded MS 64. Toned near Gem.

\$1500 - \$1750



279 1917 Shilling (Obv 2/Rev A). NGC graded MS 66. Beautiful iridescent toning. A superb Gem that is the best of date.

\$8000 - \$9000



280 1918 Shilling (Obv 2/Rev A). NGC graded MS 66. A perfect Gem. Ex Remick collection and the finest known.

\$12500 - \$15000



281 1920 Shilling (Obv 2/Rev A). NGC graded MS 65. A near Gem that is one of the finest known. A surprisingly difficult date.

\$15000 - \$17500



282 1921* Shilling (Obv 2/Rev A). NGC graded MS 64. Unusual toning but the coin is near perfect. A Gem and undergraded in our opinion.

\$20000 - \$25000



283 1922 Shilling (Obv 2/Rev A). NGC graded MS 66. One of the hardest dates to find in high grade. This Gem ex the Remick collection is the best of date.

\$15000 - \$17500



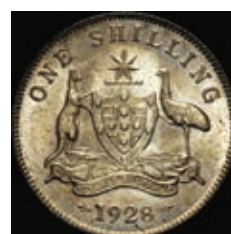
284 1924 Shilling (Obv 2/Rev A). NGC graded MS 65. High rims and sharply struck. Slight but unconvincing evidence of the '4' having been re-entered over a '3'. A perfect Gem and one of, if not the finest known.

\$15000 - \$17500



285 1925 Shilling (Obv 2/Rev A). NGC graded MS 66. A Gem that is the best of date. Clear '3' under '5'

\$8000 - \$9000



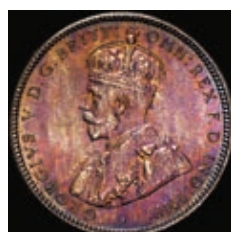
288 1928 Shilling (Obv 2/Rev A). NGC graded MS 64. A near Gem and the equal finest known.

\$10000 - \$12500



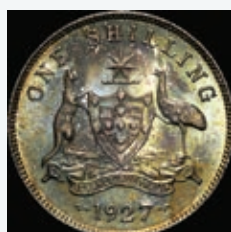
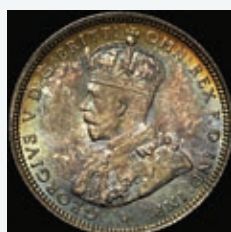
286 1926 Shilling (Obv 2/Rev A). NGC graded MS 65. A surprisingly hard date to find in high grade. This Gem is the finest known.

\$9000 - \$10000



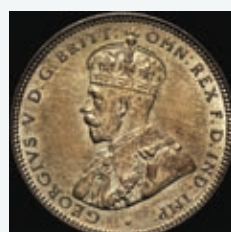
289 1931 Shilling (Obv 2/Rev A). NGC graded MS 64. Unusual purple toning but perfect. A Gem that is definitely undergraded.

\$1000 - \$1250



287 1927 Shilling (Obv 2/Rev A). NGC graded MS 66. A heavily toned Gem. The best of date.

\$10000 - \$12500



290 1933 Shilling (Obv 2/Rev A). NGC graded MS 63. Better than the NGC grade suggests. A near Gem.

\$10000 - \$12500



291 1934 Shilling (Obv 2/Rev A). NGC graded MS 65. A Gem. One of the finest known.

\$7500 - \$8500



296 1940 Shilling (Obv 3/Rev B). NGC graded MS 64. A near Gem with superior surfaces.

\$1000 - \$1250



292 1935 Shilling (Obv 2/Rev A). NGC graded MS 66. A perfect Gem. One of the finest known.

\$5000 - \$6000



297 1941 Shilling (Obv 3/Rev B). NGC graded MS 65. Proof-like Gem. One of the finest known.

\$400 - \$500



293 1936 Shilling (Obv 2/Rev A). NGC graded MS 65. A perfect Gem. One of the finest known.

\$1500 - \$1750



298 1942 Shilling (Obv 3/Rev B). NGC graded MS 64. Lightly toned Gem.

\$400 - \$500



294 1938 Shilling (Obv 3/Rev B). NGC graded MS 65. A perfect Gem. One of the finest known.

\$500 - \$600



299 1942S Shilling (Obv 3/Rev B). NGC graded MS 64. A Gem.

\$125 - \$150



295 1939 Shilling (Obv 3/Rev B). NGC graded MS 64. A brilliant Gem. Better than the NGC grade suggests.

\$500 - \$600



300 1943 Shilling (Obv 3/Rev B). NGC graded MS 64. Toned Choice Uncirculated.

\$500 - \$600



- 301** 1943S Shilling (Obv 3/Rev B). NGC graded MS 65. Virtually perfect Gem.

\$200 - \$250



- 302** 1944 Shilling (Obv 3/Rev B). NGC graded MS 65. Virtually perfect Gem.

\$800 - \$1000



- 303** 1944S Shilling - Serif 'S'. (Obv 3/Rev B). NGC graded MS 65. Virtually perfect Gem.

\$200 - \$250



- 304** 1944S Shilling - Plain 'S'. (Obv 3/Rev B). NGC graded MS 64. Gem with a few minor marks.

\$125 - \$150



- 305** 1946 Shilling (Obv 3/Rev B). NGC graded MS 65. Virtually perfect Gem.

\$250 - \$300



- 306** 1946S Shilling. (Obv 3/Rev B). NGC graded MS 65. Fully struck up Gem. This date is notoriously understruck and if strike counts this is the finest known.

\$4000 - \$5000



- 307** 1948 Shilling (Obv 3/Rev B). NGC graded MS 65. Lightly toned near Gem.

\$400 - \$500



- 308** 1950 Shilling (Obv 4/Rev B). NGC graded MS 65. Near perfect surfaces under the toned obverse. Gem.

\$400 - \$500



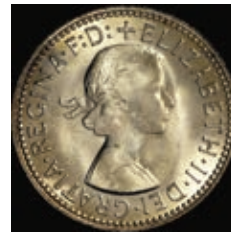
- 309** 1952 Shilling (Obv 4/Rev B). NGC graded MS 65. Toned near Gem.

\$200 - \$250



310 1953 Shilling (Obv 5/Rev B). NGC graded MS 63. Choice Uncirculated.

\$20 - \$30



315 1958 Shilling (Obv 6/Rev B). NGC graded MS 65. Lightly toned Gem.

\$50 - \$75



311 1954 Shilling (Obv 5/Rev B). NGC graded MS 62. Choice Uncirculated. Much better than NGC grade suggests.

\$20 - \$30



316 1959 Shilling (Obv 6/Rev B). NGC graded MS 63. Choice Uncirculated.

\$20 - \$30



312 1955 Shilling (Obv 6/Rev B). NGC graded MS 67. Proof-like Gem. One of the finest known.

\$800 - \$1000



317 1960 Shilling (Obv 6/Rev B). NGC graded MS 65. Proof-like Gem.

\$20 - \$30



313 1956 Shilling (Obv 6/Rev B). NGC graded MS 64. Proof-like near Gem.

\$150 - \$200



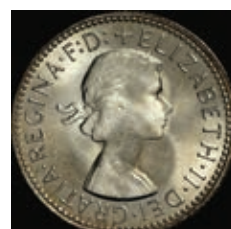
318 1961 Shilling (Obv 6/Rev B). NGC graded MS 66. Proof-like Gem.

\$20 - \$30



314 1957 Shilling (Obv 6/Rev B). NGC graded MS 66. Brilliant Gem.

\$75 - \$100



319 1962 Shilling (Obv 6/Rev B). NGC graded MS 67. Brilliant Gem.

\$75 - \$100

Florin



320 1963 Shilling (Obv 6/Rev B). NGC graded MS 67. Lightly toned Gem.

\$75 - \$100



321 1910 Florin (Obv 1/Rev A). NGC graded MS 65. A surprisingly difficult date to find in high grade and this is one of the best. A near Gem.

\$10000 - \$12500



322 1911 Florin (Obv 2/Rev A). NGC graded MS 65. Gun metal toning with virtually mark free fields. Gem. One of the finest known.

\$22500 - \$27500



323 1912 Florin (Obv 2/Rev A). NGC graded MS 65. A Gem with radiant bloom. A key coin in the series and easily the best of date.

\$50000 - \$60000



324 1913 Florin (Obv 2/Rev A). NGC graded MS 64. One of the hardest dates to find in high grade. A bright Gem and one of the finest known.

\$22500 - \$27500



325 1914 Florin (Obv 2/Rev A). NGC graded MS 64. Gun metal toning with only a few minor obverse marks that detract. A near Gem with a superb strike that is arguably the best of date.

\$10000 - \$12500



326 1914H Florin. (Obv 2/Rev A). NGC graded MS 66. The 1914 H Florin ranks as one of the hardest dates in the Australian Florin series and the 'Benchmark' coin, NGC MS 66 is easily the best. This lightly toned Gem is well struck for the date with virtually perfect surfaces.

\$65000 - \$75000



327 1915 Florin (Obv 2/Rev A). NGC graded MS 66. The 'Benchmark' 1915 Florin once graced the collection of Roy Farman a noted Melbourne collector active from the 1940s. It is an exact match in colour to the 1915 Shilling from the same collection which was obviously put away at the same time and similarly stored. The iridescent old world colour adds immeasurably to its appearance. This Gem graded by NGC as MS 66 it is the finest known and the perfect Type Coin.

\$65000 - \$75000



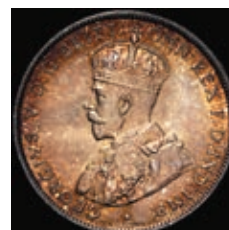
328 1915H Florin (Obv 2/Rev A). NGC graded MS 67. Australian coins struck at the Heaton Mint, Birmingham are notorious for their poor quality and so it seems remarkable that the 'Benchmark' 1915 H Florin is one of only a few in the series to achieve an MS 67 grade. Its brilliant surfaces are near perfect. This Gem is one for the connoisseur.

\$60000 - \$70000



329 1916 Florin (Obv 2/Rev A). NGC graded MS 66. Specimen-like early strike. One of the finest known. Gem.

\$12500 - \$17500



330 1917 Florin (Obv 2/Rev A). NGC graded MS 65. Attractive old world tone. A near Gem.

\$10000 - \$12500



331 1918 Florin (Obv 2/Rev A). NGC graded MS 64. Dark tone but blemish free. A perfect match to the 1918 Sixpence. A Gem and in our opinion undergraded.

\$7000 - \$8000



332 1919 Florin (Obv 2/Rev A). NGC graded MS 65. Every series throws up a coin that although struck in relatively high numbers proves difficult to find in a superior grade. The 'Benchmark' 1919 Florin, NGC MS 65 was formerly part of the 'Parkhill' collection and was for a time considered the finest surviving florin of George V. This Gem is the best of date and unlikely to be bettered.

\$22500 - \$27500



333 1921 Florin (Obv 2/Rev A). NGC graded MS 66. A white Gem with virtually mark free surfaces. Best of date.

\$30000 - \$40000



334 1922 Florin (Obv 2/Rev A). NGC graded MS 65. A superior strike for this date. A perfect Gem and one of the finest known.

\$15000 - \$20000



335 1923 Florin (Obv 2/Rev A). NGC graded MS 67. London coin dealers Baldwins, were renowned for holding stock of quality Australian pre-decimal coins. Coins with the Baldwin's pedigree such as the 1911 Penny, 1912 H Halfpenny, 1927 Canberra Florin and the 1937 Crown were selected for quality and usually command significant premiums. A small number of 1923 Florins were also selected and put away by Baldwins and the 'Benchmark' coin NGC MS 67 is the best of the group. The coin displays incredible iridescent toning and in our opinion it is the finest known Australian Florin.

\$60000 - \$70000



336 1924 Florin (Obv 2/Rev A). NGC graded MS 64. Reflective Proof-like fields with interesting die-cracking . A near Gem and in our opinion undergraded.

\$8000 - \$9000



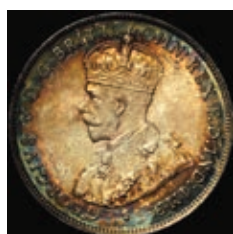
337 1925 Florin (Obv 2/Rev A). NGC graded MS 66. A perfect Gem and the best of date.

\$15000 - \$17500



338 1926 Florin (Obv 2/Rev A). NGC graded MS 66. The pick of the Draper hoard. A brilliant and sharply struck near Gem. The finest known.

\$17500 - \$20000



339 1927 Florin (Obv 2/Rev A). NGC graded MS 65. Attractive old world tone. A near Gem and one of the finest known.

\$4000 - \$5000



340 1927 Florin - Canberra. (Obv 7/Rev C). NGC graded MS 65. A Gem with attractive old world tone.

\$600 - \$750



341 1928 Florin (Obv 2/Rev A). NGC graded MS 66. Lightly toned Gem with virtually perfect surfaces. The finest known.

\$10000 - \$12500



342 1931 Florin (Obv 2/Rev A). NGC graded MS 65. A brilliant Gem with near perfect fields.

\$1500 - \$1750

Postal Bidders:

All mail, phone and fax bids must be received by 6:00pm AEDST
Saturday 17th January 2015



- 343** 1932 Florin (Obv 2/Rev A). NGC graded MS 64. The 1932 Florin has the smallest 'official' mintage of any Australian pre-decimal coin. Although coins such as the 1916 'Mule' Halfpenny and the 1930 pennies have much smaller mintages these were accidental or experimental strikings that were not expected to make it into circulation. 1932 Florins are never flashy and the 'Benchmark' coin, NGC MS 64 has near perfect surfaces but with the usual subdued colour. It is, we think, the finest surviving example of the 188,000 coins struck. A Gem.

\$40000 - \$50000



- 344** 1933 Florin (Obv 2/Rev A). NGC graded MS 66. Bright with beautiful surfaces. A near Gem and the finest known.

\$40000 - \$50000



- 345** 1934 Florin (Obv 2/Rev A). NGC graded MS 65. An attractive Gem with silken surfaces.

\$3000 - \$4000

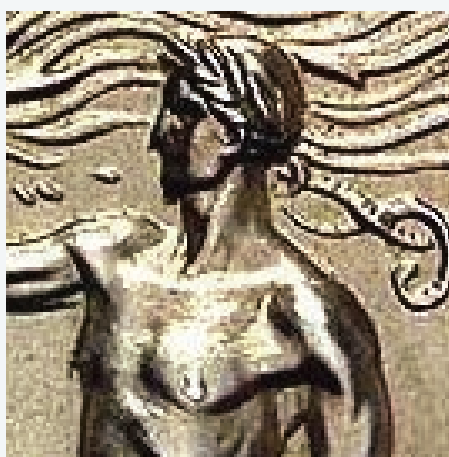
Live Online Auction:

Starts: 7:00pm AEDST Mon. 19th Jan. 2015

Ends: 9:00pm AEDST Mon. 19th Jan. 2015

Online Bidding Opens 5th January 2015

www.iagauctions.com



- 346 1934-35 Florin - Melbourne Centenary. (Obv 8/Rev D). NGC graded MS 65. A small mintage of 75,000 coins were struck to celebrate the Centenary of Melbourne, but being issued at a premium price of three shillings they were not all sold and 21,000 were subsequently melted. The central design was taken from an intricate drawing by renowned war artist Mervyn Napier- Waller and although the coins were made for collectors, the design proved difficult to replicate and they are often under-struck with ill-defined detail on the head, breast and hand. Specimens which show the rider with a full garland (wreath) on the head, a well defined nipple on the breast and the fingers fully defined in the hand are extremely rare. The 'Benchmark' specimen is remarkable in its fine detail and graded NGC MS 65 it is one of the finest known of the early strikes. A superlative Gem.

\$25000 - \$35000



- 347 1935 Florin (Obv 2/Rev A). NGC graded MS 65. The pick of the Draper hoard. A lightly toned and sharply struck Gem.

\$4000 - \$5000



- 348 1936 Florin (Obv 2/Rev A). NGC graded MS 64. A brilliant Gem.

\$600 - \$750



- 349** 1938 Florin (Obv 3/Rev B). NGC graded MS 64. Beautifully light toning and almost mark free. A Gem and deserving of a higher grade.

\$400 - \$500



- 354** 1942S Florin (Obv 3/Rev B). NGC graded MS 63. Choice Uncirculated.

\$75 - \$100



- 350** 1939 Florin (Obv 3/Rev B). NGC graded MS 64. A near Gem that ranks amongst the finest known.

\$4000 - \$5000



- 355** 1943 Florin (Obv 3/Rev B). NGC graded MS 62. Uncirculated.

\$75 - \$100



- 351** 1940 Florin (Obv 3/Rev B). NGC graded MS 63. Uncirculated.

\$75 - \$150



- 356** 1943S Florin (Obv 3/Rev B). NGC graded MS 65. Gem.

\$300 - \$400



- 352** 1941 Florin (Obv 3/Rev B). NGC graded MS 64. Uncirculated.

\$200 - \$250



- 357** 1944 Florin (Obv 3/Rev B). NGC graded MS 64. Gem.

\$200 - \$250



- 353** 1942 Florin (Obv 3/Rev B). NGC graded MS 63. Uncirculated.

\$75 - \$100



- 358** 1944S Florin - Serif 'S'. (Obv 3/Rev B). NGC graded MS 65. Choice Uncirculated.

\$200 - \$250



359 1944S Florin - Plain 'S'. (Obv 3/Rev B). NGC graded MS 65. Gem

\$200 - \$250



364 1951 Florin - Jubilee. (Obv 4/Rev E). NGC graded MS 64. Choice Uncirculated.

\$50 - \$75



360 1945 Florin (Obv 3/Rev B). NGC graded MS 65. near Gem.

\$600 - \$700



365 1951 Florin (Obv 4/Rev B). NGC graded MS 63. Choice Uncirculated.

\$175 - \$200



361 1946 Florin - Small void in '6'. (Obv 3/Rev B). NGC graded MS 64. near Gem.

\$175 - \$200



366 1952 Florin (Obv 4/Rev B). NGC graded MS 65. Choice Uncirculated.

\$500 - \$600



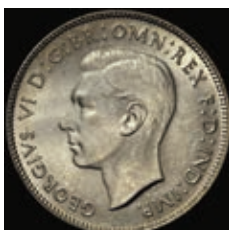
362 1946 Florin - Large void in '6'. (Obv 3/Rev B(i)). NGC graded MS 64. Choice Uncirculated.

\$250 - \$300



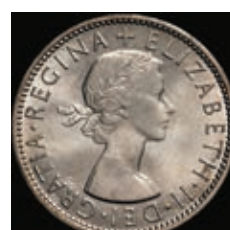
367 1953 - Long Rev' Denticles Florin. (Obv 5 - Rev B(ii)). NGC graded MS 63. Choice Uncirculated. A very scarce variety.

\$600 - \$700



363 1947 Florin (Obv 3/Rev B). NGC graded MS 64. Choice Uncirculated.

\$175 - \$200



368 1953 - Short Rev' Denticles Florin. (Obv 5 - Rev Bm). NGC graded MS 65. Gem.

\$300 - \$350



369 1954 Florin (Obv 5/Rev Bm). NGC graded MS 63. Lightly toned. Choice Uncirculated.

\$75 - \$100



374 1959 Florin (Obv 6/Rev B). NGC graded MS 63. Choice Uncirculated.

\$20 - \$30



370 1954 Florin - Royal Visit. (Obv 6/Rev F). NGC graded MS 64. Choice Uncirculated.

\$75 - \$100



375 1960 Florin (Obv 6/Rev B). NGC graded MS 64. Choice Uncirculated.

\$20 - \$30



371 1956 Florin (Obv 6/Rev B). NGC graded MS 65. An attractive Gem.

\$250 - \$350



376 1961 Florin (Obv 6/Rev B). NGC graded MS 66. Gem.

\$50 - \$75



372 1957 Florin (Obv 6/Rev B). NGC graded MS 63. Gem.

\$20 - \$30



377 1962 Florin (Obv 6/Rev B). NGC graded MS 64. Choice Uncirculated.

\$20 - \$30



373 1958 Florin (Obv 6/Rev B). NGC graded MS 64. Choice Uncirculated.

\$20 - \$30



378 1963 Florin (Obv 6/Rev B). NGC graded MS 63. Choice Uncirculated.

\$20 - \$30



379 1937 Crown (Obv 3/Rev A). NGC graded MS 65. Hardly a mark on this lightly toned Gem.

\$2000 - \$3000



380 1938 Crown (Obv 3/Rev A). NGC graded MS 62. Choice Uncirculated.

\$500 - \$750

The Key to the Benchmark Coin Types

The catalogue entries for the coins in the Benchmark collection indicate both 'Obverse' and 'Reverse' types eg (Obv 1/Rev A) which in tandem identifies the unique characteristics of each coin.

This is important as it distinguishes between common, scarce and rare varieties of the same coin date and denomination. For example the extremely rare 1930 'English Obverse' Penny is identified as (Obv 1/ Rev Am) while the scarce 1930 'Indian Obverse' Penny is identified as (Obv 2/ Rev Am). Similarly the seven varieties of the 1920 Penny are readily identified by referring to the Key set out in the following pages. It should prove invaluable in highlighting what is missing from your collection.

More information regarding the coin types used in this catalogue can be found at:

www.benchmarkcoincatalogue.com

Thank You For Your Participation in "The Benchmark Collection"

All Online and Postal bidders please allow us until at least midday on Tuesday the 20th to sort, finalise and double check all postal and online bids. Online bidders can go into their accounts section to check lots won and prices.

Preliminary Prices Realised will be posted on the website by late afternoon on Tuesday 20th January, and is updated in real time as any changes or post auction sales occur. All paid auction catalogue subscribers will also have the prices realised posted to them by the 26th January, and should receive them soon after. Any Passed In lots MAY still be available as shown for sale online on a first come basis for 7 days after the sale ends, all remaining unsold lots will then be withdrawn from sale.

The next Auction, Sale 81, will be in **March 2015**.

Also keep an eye out for our upcoming online only Postal Sale (Postal Sale 5) coming in June 2015! Then in September we will hold our special 30th Anniversary Sale, an Auction not to be missed! Sign up online now to receive email notifications and to gain access to view lots and to bid online. Please see the website for further information and details, or contact us.

We will be accepting lots for consignment for Sale 81 and Postal Sale 5 from January 2015 onwards, or until the sales are fully finalised. Special items for the 30th Anniversary Auction in September will be accepted until late July 2015. Please contact us NOW to discuss the submission of any lots.

www.iagauctions.com

For any more information please call our office on:
Ph: (07) 55 380 300 - or Fax: (07) 55 387 296

Alternately you can Email us at:

mail@iagauctions.com

Download the Prices Realised and view unsold lots after the sale from our Website:

www.iagauctions.com

HALFPENNY

OBVERSE TYPES:

- Obverse 1 - English
- Obverse 2 - Indian (Calcutta)
- Obverse 3 - English
- Obverse 4 - English
- Obverse 5 - English (Melbourne modified)
- Obverse 6 - English
- Obverse 7 - English

REVERSE TYPES:

- Reverse A - London
- Reverse Am - London (Melbourne modified)
- Reverse B - London
- Reverse Bm - London (Melbourne modified)
- Reverse Bb - London (Bombay modified)
- Reverse C - Bombay
- Reverse D - London (Perth modified)



Obverse 1 - English

Designer: *Sir (Edgar) Bertram Mackennal (Initials 'B.M.' raised on truncation)*

Design: *Left facing profile of George V*

Legend : *GEORGIVS V D. G. BRITT: OMN: REX F. D. I ND: IMP: •*

Denticle Count: *156 teeth*

Mint Marks: *None*

Characteristics:



Obverse 2 - Indian (Calcutta)

Designer: *Sir (Edgar) Bertram Mackennal (No attribution)*

Design: *Left facing profile of George V*

Legend : *GEORGE V KING EMPEROR*

Denticle Count: *113 teeth*

Mint Marks: *None*

Characteristics: *Elephant on king's regalia. No pearls in band of crown. No stops in legend*



Obverse 3 - English

Designer: *Thomas Hugh Paget (Initials 'HP' raised below truncation)*

Design: *Left facing profile of George VI*

Legend : *GEORGIVS VI D : G : BR : OMN : REX F : D : IND : IMP .*

Denticle Count: *147 teeth*

Mint Marks: *None, 'I' under head*

Characteristics:



Obverse 4 - English

Designer: *Thomas Hugh Paget (Initials 'HP' raised below truncation)*

Design: *Left facing profile of George VI*

Legend : *GEORGIVS VI D : G : BR : OMN : REX FIDEI DEF .*

Denticle Count: *146 teeth*

Mint Marks: *None*

Characteristics: *I's in 'FIDEI' align with denticles*



Obverse 5 - English (Melbourne modified)

Designer: *Thomas Hugh Paget (Initials 'HP' raised below truncation)*

Design: *Left facing profile of George VI*

Legend : *GEORGIVS VI D : G : BR : OMN : REX FIDEI DEF .*

Denticle Count: *149 teeth*

Mint Marks: *None*

Characteristics: *I's in 'FIDEI' fall between two denticles*



Obverse 6 - English

Designer: *Mary Gillick (Initials 'M.G.' incuse on truncation)*

Design: *Right facing profile of Elizabeth II*

Legend : *ELIZABETH ♦ II ♦ DEI ♦ GRATIA ♦ REGINA +*

Denticle Count: *112 beads*

Mint Marks: *None*

Characteristics: *Round beads replaced elongated denticles. First upstroke on 'H' of 'ELIZABETH' falls between two beads. Stops in legend are diamond shaped. '+' (Christian cross) appears above the monarch's head in lieu of 'FIDEI DEF' (Defender of the Faith)*



Obverse 7 - English

Designer: *Mary Gillick (Initials 'M.G.' incuse on truncation)*

Design: *Right facing profile of Elizabeth II*

Legend : *ELIZABETH . II . DEI . GRATIA . REGINA . F : D : +*

Denticle Count: *110 beads*

Mint Marks: *None*

Characteristics: *Round beads instead of elongated denticles. First upstroke on 'H' of 'ELIZABETH' aligns with bead. Round stops replaced diamond shaped stops in the legend. '+' (Christian cross) above the monarch's head . 'F : D :' (Defender of the Faith) added to legend*



Reverse A - London

Designer: *William Henry James Blakemore (no attribution)*

Design: *'ONE HALF PENNY' surrounded by 90 beads contained within concentric circles*

Legend : *• COMMONWEALTH OF AUSTRALIA •*

Denticle Count: *148 teeth*

Mint Marks: *None, 'H' or 'I' above date*

Characteristics: *Straight based letters in legend*



Reverse Am - London (Melbourne modified)

Designer: William Henry James Blakemore (no attribution)
Design: 'ONE HALF PENNY' surrounded by 90 beads contained within concentric circles
Legend : • COMMONWEALTH OF AUSTRALIA •
Denticle Count: 148 teeth
Mint Marks: None
Characteristics: Curvature on the base of letters in legend



Reverse B - London

Designer: George Edward Kruger-Gray (Initials 'KG' raised under tail)
Design: Kangaroo facing right *
Legend : AUSTRALIA HALF PENNY
Denticle Count: 106 thick & 106 thin teeth
Mint Marks: None, 'HALF PENNY' '• •', 'HALF PENNY' 'PL', 'AUSTRALIA' '• •'
Characteristics: Downstrokes on 'H' of 'HALF' align with thin denticles. Double foot on 'Y' of 'HALF PENNY'. On early strikes the rib cage of the kangaroo is fully defined and there are fur lines on the paws, tail and ear. Short edge denticles



Reverse Bm - London (Melbourne modified)

Designer: George Edward Kruger-Gray (Initials 'KG' raised under tail)
Design: Kangaroo facing right *
Legend : AUSTRALIA HALF PENNY
Denticle Count: 106 thick & 106 thin teeth
Mint Marks: None, 'HALF PENNY' '• •'
Characteristics: Downstrokes on 'H' of 'HALF' align with thin denticles. Single foot on 'Y' of 'HALF PENNY'. Fine detail, such as fur lines, is less evident on the kangaroo. Short edge denticles



Reverse Bb - London (Bombay modified)

Designer: George Edward Kruger-Gray (Initials 'KG' raised under tail)
Design: Kangaroo facing right *
Legend : AUSTRALIA HALF PENNY
Denticle Count: 106 thick & 106 thin teeth (Short)
Mint Marks: '• •' 'HALF PENNY' '• •'
Characteristics: Downstrokes on 'H' of 'HALF' align with thin denticles. Double foot on 'Y' of 'HALF PENNY'. The kangaroo has a raised and lidded eye but otherwise has shallow definition with no fur lines especially in the ear. Short edge denticles



Reverse C - Bombay

Designer: George Edward Kruger-Gray (Initials 'KG' raised under tail)
Design: Kangaroo facing right *
Legend : AUSTRALIA HALF PENNY
Denticle Count: 104 thick & 104 thin teeth (Long)
Mint Marks: '• •' 'HALF PENNY' '• •'
Characteristics: Downstrokes on 'H' of 'HALF' align with thick denticles. Single foot on 'Y' of 'HALF PENNY'. The kangaroo has a raised and lidded eye but otherwise has shallow definition with no fur lines especially in the ear. Long edge denticles



Reverse D - London (Perth modified)

Designer: George Edward Kruger-Gray (Initials 'KG' raised under tail)
Design: Kangaroo facing right *
Legend : AUSTRALIA HALF PENNY
Denticle Count: 104 thick & 104 thin teeth (Short)
Mint Marks: 'HALF PENNY' '• •'
Characteristics: Downstrokes on 'H' of 'HALF' align with thick denticles. Double foot on 'Y' of 'HALF PENNY'. Strong fur lines in ear. Short edge denticles

PENNY

OBVERSE TYPES:

- Obverse 1 - English
- Obverse 2 - Indian (Calcutta)
- Obverse 3 - English
- Obverse 4 - Indian (Bombay)
- Obverse 5 - English
- Obverse 6 - English (Melbourne modified)
- Obverse 7 - English (Perth modified)
- Obverse 8 - English (Melbourne modified)
- Obverse 9 - English (Perth modified)

REVERSE TYPES:

- Reverse A - London
- Reverse B - Birmingham
- Reverse C - Calcutta
- Reverse Bm - Birmingham (Melbourne modified)
- Reverse Cm - Calcutta (Melbourne modified)
- Reverse Am - London (Melbourne modified)
- Reverse D - London
- Reverse E - Bombay
- Reverse E (i) - Bombay (Modified)
- Reverse F - London
- Reverse Fm - London (Melbourne modified)
- Reverse Fp - London (Perth modified)



Obverse 1 - English

Designer: Sir (Edgar) Bertram Mackennal (Initials 'B.M.' raised on truncation)
Design: Left facing profile of George V
Legend : GEORGIVS V D. G. BRITT: OMN: REX F. D. IND: IMP: •
Denticle Count: 177 teeth
Mint Marks: None
Characteristics: Upstroke on 'N' of 'OMN' falls between two denticles



Obverse 2 - Indian (Calcutta)

Designer: Sir (Edgar) Bertram Mackennal (Initials 'B.M.' raised on truncation)
Design: Left facing profile of George V
Legend : GEORGIVS V D. G. BRITT: OMN: REX F. D. IND: IMP: •
Denticle Count: 178 teeth
Mint Marks: None
Characteristics: Upstroke on 'N' of 'OMN' aligns with denticle



Obverse 3 - English

Designer: *Thomas Hugh Paget (Initials 'HP' raised below truncation)*

Design: *Left facing profile of George VI*

Legend : *GEORGIVS VI D : G : BR : OMN : REX F : D : IND : IMP .*

Denticle Count: *156 teeth*

Mint Marks: *None*

Characteristics: *Upstroke on 'N' of 'OMN' aligns with denticle*



Obverse 4 - Indian (Bombay)

Designer: *Thomas Hugh Paget (Initials 'HP' raised below truncation)*

Design: *Left facing profile of George VI*

Legend : *GEORGIVS VI D : G : BR : OMN : REX F : D : IND : IMP .*

Denticle Count: *145 teeth*

Mint Marks: *'I' under head, ('I' missing on some 1942I pennies)*

Characteristics: *Upstroke on 'N' of 'OMN' falls between two denticles*



Obverse 5 - English

Designer: *Thomas Hugh Paget (Initials 'HP' raised below truncation)*

Design: *Left facing profile of George VI*

Legend : *GEORGIVS VI D : G : BR : OMN : REX F : D : IND : IMP .*

Denticle Count: *155 teeth*

Mint Marks: *None*

Characteristics: *Upstroke on 'N' of 'OMN' falls between two denticles*



Obverse 6 - English (Melbourne modified)

Designer: *Mary Gillick (Initials 'M.G.' incuse on truncation)*

Design: *Right facing profile of Elizabeth II*

Legend : *ELIZABETH ♦ II ♦ DEI ♦ GRATIA ♦ REGINA +*

Denticle Count: *116 beads*

Mint Marks: *None*

Characteristics: *Round beads replaced elongated denticles. 'I' of 'GRATIA' falls between two beads. Stops in legend are diamond shaped. '+' (Christian cross) appears above the monarch's head in lieu of 'FIDEI DEF' (Defender of the Faith)*



Obverse 7 - English (Perth modified)

Designer: *Mary Gillick (Initials 'M.G.' incuse on truncation)*

Design: *Right facing profile of Elizabeth II*

Legend : *ELIZABETH ♦ II ♦ DEI ♦ GRATIA ♦ REGINA +*

Denticle Count: *117 beads*

Mint Marks: *None*

Characteristics: *Round beads replaced elongated denticles. 'I' of 'GRATIA' aligns with bead. Stops in legend are diamond shaped. '+' (Christian cross) appears above the monarch's head in lieu of 'FIDEI DEF' (Defender of the Faith)*



Obverse 8 - English (Melbourne modified)

Designer: *Mary Gillick (Initials 'M.G.' incuse on truncation)*

Design: *Right facing profile of Elizabeth II*

Legend : *ELIZABETH . II . DEI . GRATIA . REGINA . F : D : +*

Denticle Count: *120 beads*

Mint Marks: *None*

Characteristics: *Round beads instead of elongated denticles. 'I' of 'GRATIA' aligns with bead. Round stops replaced diamond shaped stops in the legend. '+' (Christian cross) above the monarch's head. 'F:D:' (Defender of the Faith) added to legend*



Obverse 9 - English (Perth modified)

Designer: *Mary Gillick (Initials 'M.G.' incuse on truncation)*

Design: *Right facing profile of Elizabeth II*

Legend : *ELIZABETH . II . DEI . GRATIA . REGINA . F : D : +*

Denticle Count: *116 beads*

Mint Marks: *None*

Characteristics: *Round beads instead of elongated denticles. 'I' of 'GRATIA' falls between two beads. Round stops replaced diamond shaped stops in the legend. '+' (Christian cross) above the monarch's head. 'F:D:' (Defender of the Faith) added to legend*



Reverse A - London

Designer: *William Henry James Blakemore (no attribution)*

Design: *'ONE PENNY' surrounded by 90 beads contained within concentric circles*

Legend : *• COMMONWEALTH OF AUSTRALIA •*

Denticle Count: *174 teeth*

Mint Marks: *None*

Characteristics: *Apex of first 'A' of 'AUSTRALIA' falls between two denticles. Apex of second 'A' of 'AUSTRALIA' aligns with a denticle. Apex of last 'A' of 'AUSTRALIA' falls between two denticles. Straight based letters in legend*



Reverse B - Birmingham

Designer: *William Henry James Blakemore (no attribution)*

Design: *'ONE PENNY' surrounded by 90 beads contained within concentric circles*

Legend : *• COMMONWEALTH OF AUSTRALIA •*

Denticle Count: *177 teeth*

Mint Marks: *None, 'H' above date*

Characteristics: *Apex of first 'A' of 'AUSTRALIA' falls between two denticles. Apex of second 'A' of 'AUSTRALIA' aligns with a denticle. Apex of last 'A' of 'AUSTRALIA' aligns with a denticle. Straight based letters in legend*



Reverse C - Calcutta

Designer: *William Henry James Blakemore (no attribution)*

Design: 'ONE PENNY' surrounded by 90 beads contained within concentric circles

Legend : • COMMONWEALTH OF AUSTRALIA •

Denticle Count: 179 teeth

Mint Marks: 'I' above date, // , // , // , //

Characteristics: Apex of first 'A' of 'AUSTRALIA' falls between two denticles. Apex of second 'A' of 'AUSTRALIA' falls between two denticles. Apex of last 'A' of 'AUSTRALIA' falls between two denticles. Straight based letters in legend



Reverse Bm - Birmingham (Melbourne modified)

Designer: *William Henry James Blakemore (no attribution)*

Design: 'ONE PENNY' surrounded by 90 beads contained within concentric circles

Legend : • COMMONWEALTH OF AUSTRALIA •

Denticle Count: 177 teeth

Mint Marks: None, // , // , //

Characteristics: Apex of first 'A' of 'AUSTRALIA' falls between two denticles. Apex of second 'A' of 'AUSTRALIA' aligns with a denticle. Apex of last 'A' of 'AUSTRALIA' aligns with a denticle. Curvature on the base of letters in legend



Reverse Cm - Calcutta (Melbourne modified)

Designer: *William Henry James Blakemore (no attribution)*

Design: 'ONE PENNY' surrounded by 90 beads contained within concentric circles

Legend : • COMMONWEALTH OF AUSTRALIA •

Denticle Count: 179 teeth

Mint Marks: //

Characteristics: Apex of first 'A' of 'AUSTRALIA' falls between two denticles. Apex of second 'A' of 'AUSTRALIA' falls between two denticles. Apex of last 'A' of 'AUSTRALIA' falls between two denticles. Curvature on the base of letters in legend



Reverse Am - London (Melbourne modified)

Designer: *William Henry James Blakemore (no attribution)*

Design: 'ONE PENNY' surrounded by 90 beads contained within concentric circles

Legend : • COMMONWEALTH OF AUSTRALIA •

Denticle Count: 174 teeth

Mint Marks: None

Characteristics: Apex of first 'A' of 'AUSTRALIA' falls between two denticles. Apex of second 'A' of 'AUSTRALIA' aligns with a denticle. Apex of last 'A' of 'AUSTRALIA' falls between two denticles. Curvature on the base of letters in legend



Reverse D - London

Designer: *George Edward Kruger-Gray (Initials 'KG' raised above tail)*

Design: *Kangaroo facing left

Legend : AUSTRALIA PENNY

Denticle Count: 81 thick & 81 thin teeth

Mint Marks: None, 'K.G.' (Dot between designer's initials), 'PENNY' '•', 'AUSTRALIA' '•'

Characteristics: Downstroke on 'P' of 'PENNY' aligns with thick denticle. Downstroke on first 'N' of 'PENNY' aligns with thin denticle. Downstroke on 'Y' of 'PENNY' aligns with thin denticle. Upstrokes on 'U' of 'AUSTRALIA' align with thick denticles. Except for the 1952 A • Penny coins of the 1940s & 50s with this reverse have a serif on cross-bar of 'S' in date



Reverse E - Bombay

Designer: *George Edward Kruger-Gray (Initials 'KG' raised above tail)*

Design: *Kangaroo facing left

Legend : AUSTRALIA PENNY

Denticle Count: 77 thick & 77 thin teeth (Long)

Mint Marks: '•' 'PENNY' '•'

Characteristics: Downstroke on 'P' of 'PENNY' aligns with thick denticle. Downstroke on first 'N' of 'PENNY' aligns with thin denticle. Downstroke on 'Y' of 'PENNY' aligns with thick denticle. First upstroke of 'U' of 'AUSTRALIA' aligns with thin denticle. Long reverse denticles



Reverse E (i) - Bombay (Modified)

Designer: *George Edward Kruger-Gray (Initials 'KG' raised above tail)*

Design: *Kangaroo facing left

Legend : AUSTRALIA PENNY

Denticle Count: 77 thick & 77 thin teeth (Short)

Mint Marks: '•' 'PENNY' '•'

Characteristics: Downstroke on 'P' of 'PENNY' aligns with thick denticle. Downstroke on first 'N' of 'PENNY' aligns with thin denticle. Downstroke on 'Y' of 'PENNY' aligns with thick denticle. First upstroke of 'U' of 'AUSTRALIA' aligns with thin denticle. Short reverse denticles



Reserve F - London

Designer: *George Edward Kruger-Gray (Initials 'KG' raised above tail)*

Design: *Kangaroo facing left

Legend : AUSTRALIA PENNY

Denticle Count: 81 thick & 81 thin teeth

Mint Marks: 'PENNY' 'PL', 'AUSTRALIA' '•', 'PENNY' '•'

Characteristics: Downstroke on 'P' of 'PENNY' aligns with thin denticle. Downstroke on first 'N' of 'PENNY' falls between a thick & thin denticle. Downstroke on 'Y' of 'PENNY' aligns with thick denticle. First upstroke of 'U' of 'AUSTRALIA' falls between thick and thin denticle. Straight cross-bar on 'S' in date



Reverse Fm - London (Melbourne modified)

Designer: *George Edward Kruger-Gray (Initials 'KG' raised above tail)*

Design: *Kangaroo facing left

Legend : AUSTRALIA PENNY

Denticle Count: 81 thick & 81 thin teeth

Mint Marks: None

Characteristics: Downstroke on 'P' of 'PENNY' aligns with thick denticle. Downstroke on first 'N' of 'PENNY' aligns with thin denticle. Downstroke on 'Y' of 'PENNY' aligns with thin denticle. Upstrokes on 'U' of 'AUSTRALIA' align with thin denticles. Straight cross-bar on 'S' in date



Reverse Fp - London (Perth modified)

Designer: *George Edward Kruger-Gray (Initials 'KG' raised above tail)*

Design: **Kangaroo facing left*

Legend : *AUSTRALIA PENNY*

Denticle Count: *81 thick & 81 thin teeth*

Mint Marks: *'PENNY' '+'*

Characteristics: *Downstroke on 'P' of 'PENNY' aligns with thick denticle. Downstroke of first 'N' in 'PENNY' aligns with thick denticle. Downstroke on 'Y' of 'PENNY' aligns with thin denticle. Upstrokes of 'U' of 'AUSTRALIA' align with thick denticles. Straight cross-bar on 'S' in date*

THREEPENCE

OBVERSE TYPES:

- Obverse 1 - English
- Obverse 2 - English
- Obverse 3 - English
- Obverse 4 - English
- Obverse 5 - English
- Obverse 6 - English

REVERSE TYPES:

- Reverse A - London
- Reverse B - London
- Reverse C - London
- Reverse D - London



Obverse 1 - English

Designer: *George William De Saulles (Initials 'DES.' raised below truncation)*

Design: *Right facing profile of Edward VII*

Legend : *EDWARDVS VII D: G: BRITT: OMN: REX F: D: IND: IMP: •*

Denticle Count: *120 teeth*

Mint Marks: *None*

Characteristics:



Obverse 2 - English

Designer: *Sir (Edgar) Bertram Mackennal (Initials 'B.M.' raised on truncation)*

Design: *Left facing profile of George V*

Legend : *GEORGIVS V D: G: BRITT: OMN: REX F: D: IND: IMP: •*

Denticle Count: *121 teeth*

Mint Marks: *None*

Characteristics:



Obverse 3 - English

Designer: *Thomas Hugh Paget (Initials 'HP' raised below truncation)*

Design: *Left facing profile of George VI*

Legend : *GEORGIVS VI D: G: BR: OMN: REX F: D: IND: IMP.*

Denticle Count: *114 teeth*

Mint Marks: *None*

Characteristics:



Obverse 4 - English

Designer: *Thomas Hugh Paget (Initials 'HP' raised below truncation)*

Design: *Left facing profile of George VI*

Legend : *GEORGIVS VI D: G: BR: OMN: REX FIDEI DEF.*

Denticle Count: *118 teeth*

Mint Marks: *None*

Characteristics:



Obverse 5 - English

Designer: *Mary Gillick (Initials 'M.G.' incuse on truncation)*

Design: *Right facing profile of Elizabeth II*

Legend : *ELIZABETH ♦ II ♦ DEI ♦ GRATIA ♦ REGINA +*

Denticle Count: *89 beads*

Mint Marks: *None*

Characteristics: *Round beads replaced elongated denticles. Stops in legend are diamond shaped. '+' (Christian cross) appears above the monarch's head in lieu of 'FIDEI DEF' (Defender of the Faith)*



Obverse 6 - English

Designer: *Mary Gillick (Initials 'M.G.' incuse on truncation)*

Design: *Right facing profile of Elizabeth II*

Legend : *ELIZABETH . II . DEI . GRATIA . REGINA . F: D: +*

Denticle Count: *87 beads*

Mint Marks: *None*

Characteristics: *Round beads instead of elongated denticles. Round stops replaced diamond shaped stops in the legend. '+' (Christian cross) above the monarch's head. 'F:D:' (Defender of the Faith) added to legend*



Reverse A - London

Designer: *William Henry James Blakemore (no attribution)*

Design: *Star above a Kangaroo and Emu standing left and right of the Armonial Ensigns of the Commonwealth of Australia. 'ADVANCE AUSTRALIA' in ribbon below. ≡ ≡*

Legend : *THREEPENNY*

Denticle Count: *118 teeth*

Mint Marks: *None*

Characteristics: *Upstroke of 'N' of 'THREEPENNY' falls between two denticles*



Reverse B - London

Designer: *William Henry James Blakemore (no attribution)*

Design: *Star above a Kangaroo and Emu standing left and right of the Armorial Ensigns of the Commonwealth of Australia. 'ADVANCE AUSTRALIA' in ribbon below.*
≡ ≡

Legend : *THREEPENCE*

Denticle Count: *115 teeth*

Mint Marks: *None, 'M' below date*

Characteristics: *Upstroke of 'N' of 'THREEPENCE' aligns with a denticle*



Reverse C - London

Designer: *George Edward Kruger-Gray (Initials 'K' below left ribbon, 'G' below right ribbon)*

Design: *Three wheat stalks bound loosely by a ribbon*

Legend : *AUSTRALIA THREE PENCE*

Denticle Count: *83 thick & 83 thin teeth*

Mint Marks: *None, 'D' or Plain 'S' or Serif 'S' below right ribbon*

Characteristics:



Reverse D - London

Designer: *George Edward Kruger-Gray (Initials 'K' below left ribbon, 'G' below right ribbon)*

Design: *Three wheat stalks bound loosely by a ribbon*

Legend : *AUSTRALIA THREE PENCE*

Denticle Count: *85 thick & 85 thin teeth*

Mint Marks: *'P' & 'L' to left and right of ribbon ties*

Characteristics:

SIXPENCE

OBVERSE TYPES:

- Obverse 1 - English
- Obverse 2 - English
- Obverse 3 - English
- Obverse 4 - English
- Obverse 5 - English
- Obverse 6 - English

REVERSE TYPES:

- Reverse A - London
- Reverse B - London
- Reverse B (i) - London (Melbourne modified)
- Reverse B (ii) - London (Melbourne modified)
- Reverse C - London



Obverse 1 - English

Designer: *George William De Saulles (Initials 'DES.' raised below truncation)*

Design: *Right facing profile of Edward VII*

Legend : *EDWARDVS VII D: G: BRITT: OMN: REX F: D: IND: IMP: •*

Denticle Count: *140 teeth*

Mint Marks: *None*

Characteristics:



Obverse 2 - English

Designer: *Sir (Edgar) Bertram Mackennal (Initials 'B.M.' raised on truncation)*

Design: *Left facing profile of George V*

Legend : *GEORGIVS V D: G: BRITT: OMN: REX F: D: IND: IMP: •*

Denticle Count: *140 teeth*

Mint Marks: *None*

Characteristics:



Obverse 3 - English

Designer: *Thomas Hugh Paget (Initials 'HP' raised below truncation)*

Design: *Left facing profile of George VI*

Legend : *GEORGIVS VI D: G: BR: OMN: REX F: D: IND: IMP.*

Denticle Count: *129 teeth*

Mint Marks: *None*

Characteristics:



Obverse 4 - English

Designer: *Thomas Hugh Paget (Initials 'HP' raised below truncation)*

Design: *Left facing profile of George VI*

Legend : *GEORGIVS VI D: G: BR: OMN: REX FIDEI DEF.*

Denticle Count: *128 teeth*

Mint Marks: *None*

Characteristics:



Obverse 5 - English

Designer: *Mary Gillick (Initials 'M.G.' incuse on truncation)*

Design: *Right facing profile of Elizabeth II*

Legend : *ELIZABETH • II • DEI • GRATIA • REGINA +*

Denticle Count: *94 beads*

Mint Marks: *None*

Characteristics: *Round beads replaced elongated denticles. Stops in legend are diamond shaped. '+' (Christian cross) appears above the monarch's head in lieu of 'FIDEI DEF' (Defender of the Faith)*



Obverse 6 - English

Designer: *Mary Gillick (Initials 'M.G.' incuse on truncation)*

Design: *Right facing profile of Elizabeth II*

Legend : *ELIZABETH . II . DEI . GRATIA . REGINA . F : D : +*

Denticle Count: *94 beads*

Mint Marks: *None*

Characteristics: *Round beads instead of elongated denticles. Round stops replaced diamond shaped stops in the legend. '+ ' (Christian cross) above the monarch's head. 'F:D:' (Defender of the Faith) added to legend*



Reverse A - London

Designer: *William Henry James Blakemore (no attribution)*

Design: *Star above a Kangaroo and Emu standing left and right of the Armorial Ensigns of the Commonwealth of Australia. 'ADVANCE AUSTRALIA' in ribbon below.*

Legend : *SIXPENCE*

Denticle Count: *140 teeth*

Mint Marks: *None, 'M' below date*

Characteristics:



Reverse B - London

Designer: *William Henry James Blakemore (no attribution)*

Design: *Star above a Kangaroo and Emu standing left and right of the Armorial Ensigns of the Commonwealth of Australia. 'ADVANCE AUSTRALIA' in ribbon below.*

Legend : *SIXPENCE*

Denticle Count: *143 teeth*

Mint Marks: *None, 'D' or Plain 'S' above the date*

Characteristics:



Reverse B (i) - London (Melbourne modified)

Designer: *William Henry James Blakemore (no attribution)*

Design: *Star above a Kangaroo and Emu standing left and right of the Armorial Ensigns of the Commonwealth of Australia. 'ADVANCE AUSTRALIA' in ribbon below.*

Legend : *SIXPENCE*

Denticle Count: *143 teeth*

Mint Marks: *None*

Characteristics: *Serif on the base of '2' in date. Curvature on the base of letters in legend*



Reverse B (ii) - London (Melbourne modified)

Designer: *William Henry James Blakemore (no attribution)*

Design: *Star above a Kangaroo and Emu standing left and right of the Armorial Ensigns of the Commonwealth of Australia. 'ADVANCE AUSTRALIA' in ribbon below.*

Legend : *SIXPENCE*

Denticle Count: *143 teeth*

Mint Marks: *None*

Characteristics: *Straight bar on the base of '2' in date. Straight based lettering in the legend*



Reverse C - London

Designer: *William Henry James Blakemore (no attribution)*

Design: *Star above a Kangaroo and Emu standing left and right of the Armorial Ensigns of the Commonwealth of Australia. 'ADVANCE AUSTRALIA' in ribbon below.*

Legend : *SIXPENCE*

Denticle Count: *127 teeth*

Mint Marks: *'P L' above date*

Characteristics: *Fine tooth milling similar to British sixpences*

SHILLING

OBVERSE TYPES:

- Obverse 1 - English
- Obverse 2 - English
- Obverse 3 - English
- Obverse 4 - English
- Obverse 5 - English
- Obverse 6 - English

REVERSE TYPES:

- Reverse A - London
- Reverse B - London



Obverse 1 - English

Designer: *George William De Saulles (Initials 'DES.' raised below truncation)*

Design: *Right facing profile of Edward VII*

Legend : *EDWARDVS VII D: G: BRITT: OMN: REX F: D: IND: IMP: **

Denticle Count: *140 teeth*

Mint Marks: *None*

Characteristics:



Obverse 2 - English

Designer: *Sir (Edgar) Bertram Mackennal (Initials 'B.M.' raised on truncation)*

Design: *Left facing profile of George V*

Legend : *GEORGIVS V D. G. BRITT: OMN: REX F. D. IND: IMP: **

Denticle Count: *141 teeth*

Mint Marks: *None*

Characteristics:



Obverse 3 - English

Designer: *Thomas Hugh Paget (Initials 'HP' raised below truncation)*

Design: *Left facing profile of George VI*

Legend: *GEORGIVS VI D: G: BR: OMN: REX F: D: IND: IMP:*

Denticle Count: *133 teeth*

Mint Marks: *None*

Characteristics:



Obverse 4 - English

Designer: *Thomas Hugh Paget (Initials 'HP' raised below truncation)*

Design: *Left facing profile of George VI*

Legend: *GEORGIVS VI D: G: BR: OMN: REX FIDEI DEF:*

Denticle Count: *145 teeth*

Mint Marks: *None*

Characteristics:



Obverse 5 - English

Designer: *Mary Gillick (Initials 'M.G.' incuse on truncation)*

Design: *Right facing profile of Elizabeth II*

Legend: *ELIZABETH II DEI GRATIA REGINA*

Denticle Count: *102 beads*

Mint Marks: *None*

Characteristics: *Round beads replaced elongated denticles. Stops in legend are diamond shaped. '+' (Christian cross) appears above the monarch's head in lieu of 'FIDEI DEF' (Defender of the Faith)*



Obverse 6 - English

Designer: *Mary Gillick (Initials 'M.G.' incuse on truncation)*

Design: *Right facing profile of Elizabeth II*

Legend: *ELIZABETH II DEI GRATIA REGINA F: D: +*

Denticle Count: *101 beads*

Mint Marks: *None*

Characteristics: *Round beads replaced elongated denticles. Round stops replaced diamond shaped stops in the legend. '+' (Christian cross) above the monarch's head. 'F:D:' (Defender of the Faith) added to legend*



Reverse A - London

Designer: *William Henry James Blakemore (no attribution)*

Design: *Star above a Kangaroo and Emu standing left and right of the Armorial Ensigns of the Commonwealth of Australia. 'ADVANCE AUSTRALIA' in ribbon below.*

Legend: *ONE SHILLING*

Denticle Count: *142 teeth*

Mint Marks: *None, 'H' or 'M' below date, '*' above date*

Characteristics:



Reverse B - London

Designer: *George Edward Kruger-Gray (Initials 'K.G.' to right of Ram)*

Design: ** Merino Ram **

Legend: *AUSTRALIA SHILLING*

Denticle Count: *98 thick & 98 thin teeth*

Mint Marks: *None, Plain 'S' or Serif 'S' below Ram, '+' 'SHILLING'*

Characteristics:

FLORIN

OBVERSE TYPES:

- Obverse 1 - English
- Obverse 2 - English
- Obverse 3 - English
- Obverse 4 - English
- Obverse 5 - English
- Obverse 6 - English
- Obverse 7 - English
- Obverse 8 - English

REVERSE TYPES:

- Reverse A - London
- Reverse B - London
- Reverse B (i) - London (Melbourne modified)
- Reverse B (ii) - London (Melbourne modified)
- Reverse Bm - London (Melbourne modified)
- Reverse C - London
- Reverse D - London
- Reverse E - London
- Reverse F - London



Obverse 1 - English

Designer: *George William De Saulles (Initials 'DES.' raised below truncation)*

Design: *Right facing profile of Edward VII*

Legend: *EDWARDVS VII D: G: BRITT: OMN: REX F: D: IND: IMP: **

Denticle Count: *167 teeth*

Mint Marks: *None*

Characteristics:



Obverse 2 - English

Designer: *Sir (Edgar) Bertram Mackennal (Initials 'B.M.' raised on truncation)*

Design: *Left facing profile of George V*

Legend: *GEORGIVS V D: G: BRITT: OMN: REX F: D: IND: IMP: **

Denticle Count: *168 teeth*

Mint Marks: *None*

Characteristics:



Obverse 3 - English

Designer: *Thomas Hugh Paget (Initials 'HP' raised below truncation)*

Design: *Left facing profile of George VI*

Legend : *GEORGIVS VI D : G : BR : OMN : REX F : D : IND : IMP .*

Denticle Count: *146 teeth*

Mint Marks: *None*

Characteristics:



Obverse 4 - English

Designer: *Thomas Hugh Paget (Initials 'HP' raised below truncation)*

Design: *Left facing profile of George VI*

Legend : *GEORGIVS VI D : G : BR : OMN : REX FIDEI DEF .*

Denticle Count: *147 teeth*

Mint Marks: *None*

Characteristics:



Obverse 5 - English

Designer: *Mary Gillick (Initials 'M.G.' incuse on truncation)*

Design: *Right facing profile of Elizabeth II*

Legend : *ELIZABETH ♦ II ♦ DEI ♦ GRATIA ♦ REGINA +*

Denticle Count: *114 beads*

Mint Marks: *None*

Characteristics: *Round beads replaced elongated denticles. Stops in legend are diamond shaped. '+ ' (Christian cross) appears above the monarch's head in lieu of 'FIDEI DEF' (Defender of the Faith)*



Obverse 6 - English

Designer: *Mary Gillick (Initials 'M.G.' incuse on truncation)*

Design: *Right facing profile of Elizabeth II*

Legend : *ELIZABETH . II . DEI . GRATIA . REGINA . F : D : +*

Denticle Count: *113 beads*

Mint Marks: *None*

Characteristics: *Round beads replaced elongated denticles. Round stops replaced diamond shaped stops in the legend. '+ ' (Christian cross) above the monarch's head. 'F:D:' (Defender of the Faith) added to legend*



Obverse 7 - English

Designer: *Sir (Edgar) Bertram Mackennal (No attribution)*

Design: *Large left facing profile of George V*

Legend : *GEORGIVS V D. G. BRITT: OMN: REX F. D. IND: IMP: •*

Denticle Count: *164 teeth*

Mint Marks: *None*

Characteristics:



Obverse 8 - English

Designer: *Percy Metcalf (No attribution)*

Design: *Large left facing profile of George V in ermine robe*

Legend : *GEORGE V KING EMPEROR*

Denticle Count: *108 teeth*

Mint Marks: *None*

Characteristics:



Reverse A - London

Designer: *William Henry James Blakemore (no attribution)*

Design: *Star above a Kangaroo and Emu standing left and right of the Armorial Ensigns of the Commonwealth of Australia. 'ADVANCE AUSTRALIA' in ribbon below.*

Legend : *ONE FLORIN - TWO SHILLINGS*

Denticle Count: *166 teeth*

Mint Marks: *None, 'H' or 'M' below date*

Characteristics:



Reverse B - London

Designer: *George Edward Kruger-Gray (Initials 'K.G.' to right of Emu)*

Design: ** * Imperial Crown above the Australian Coat of Arms of 1912 and set against a floral backdrop*

Legend : *FLORIN AUSTRALIA*

Denticle Count: *76 thick & 76 thin teeth*

Mint Marks: *None, Plain 'S' or Serif 'S' above date*

Characteristics:



Reverse B (i) - London (Melbourne modified)

Designer: *George Edward Kruger-Gray (Initials 'K.G.' to right of Emu)*

Design: ** * Imperial Crown above the Australian Coat of Arms of 1912 and set against a floral backdrop*

Legend : *FLORIN AUSTRALIA*

Denticle Count: *76 thick & 76 thin teeth*

Mint Marks: *None*

Characteristics: *Large void in '6' of date*



Reverse B (ii) - London (Melbourne modified)

Designer: *George Edward Kruger-Gray (Initials 'K.G.' to right of Emu)*

Design: * * Imperial Crown above the Australian Coat of Arms of 1912 and set against a floral backdrop

Legend : FLORIN AUSTRALIA

Denticle Count: 76 thick & 76 thin teeth

Mint Marks: None

Characteristics: Large reverse denticles. Double line running between the tail and leg of the kangaroo



Reverse Bm - London (Melbourne modified)

Designer: *George Edward Kruger-Gray (Initials 'K.G.' to right of Emu)*

Design: * * Imperial Crown above the Australian Coat of Arms of 1912 and set against a floral backdrop

Legend : FLORIN AUSTRALIA

Denticle Count: 76 thick & 76 thin teeth

Mint Marks: None

Characteristics: Small reverse denticles



Reverse C - London

Designer: *George Edward Kruger-Gray (Initials 'K.' & 'G.' below date)*

Design: Old Parliament House in ornamental surround above crossed maces. Incuse date in cameo.

Legend : * PARLIAMENT HOUSE AUSTRALIA * ONE FLORIN 1927

Denticle Count: 164 teeth

Mint Marks: None

Characteristics:



Reverse D - London

Designer: *George Edward Kruger-Gray (Initials 'KG' left at ground level)*

Design: Naked youth on horseback and carrying aloft a flaming torch

Legend : CENTENARY VICTORIA MELBOURNE 1934-35 ♦ FLORIN ♦

Denticle Count: 151 teeth

Mint Marks: None

Characteristics:



Reverse E - London

Designer: *William Leslie Bowles (No attribution)*

Design: Crown and Commonwealth Star separated by a crossed mace and sword with the Southern Cross star formation set amongst the design

Legend : AUSTRALIA FLO RIN 1901 1951

Denticle Count: 147 teeth

Mint Marks: None

Characteristics:



Reverse F - London

Designer: *William Leslie Bowles ('WLB' below foot of Lion)*

Design: The British Lion and the Australian Kangaroo standing abreast

Legend : AUSTRALIA FLORIN 1954

Denticle Count: 146 teeth

Mint Marks: None

Characteristics:

CROWN

OBVERSE TYPES:

Obverse 3 - English

REVERSE TYPES:

Reverse A - London



Obverse 3 - English

Designer: *Thomas Hugh Paget (Initials 'HP' raised below truncation)*

Design: Left facing profile of George VI

Legend : GEORGIVS VI D G BR OMN REX F D IND IMP

Denticle Count: 182 teeth

Mint Marks: None

Characteristics:



Reverse A - London

Designer: *George Edward Kruger-Gray (Initials 'K.G.' below Crown at right)*

Design: Imperial Crown

Legend : COMMONWEALTH OF AUSTRALIA ONE CROWN

Denticle Count: 181 teeth

Mint Marks: None

Characteristics: Diamond shaped stops in legend

Terms And Conditions of Sale

Please read the following "Terms of Sale" carefully. These terms are applicable to all floor bidders and mail bidders in this auction. Your submission of bids in this Auction constitutes your acceptance of these "Terms of Sale".

1. This is a public auction sale, NOT an approval sale. At the fall of the gavel or auctioneer's call of "Sold", all sales are then final, and any bid acknowledged and relied on by the auctioneer shall not be withdrawn. Bidding in this auction in any way confirms that the bidder personally guarantees all payments, and acknowledges and accepts the Terms and Conditions of sale as set out herein. The auctioneer has final discretion in all such matters. In case of a dispute, the lot(s) in question may be immediately resold. The auctioneer as represented here includes International Auction Galleries as an entity.

2. Payments must be made in full and all floor bidder purchases must be removed the day of the sale, or by 5p.m. the next day. Absolutely No lots will be released until payment in full has been made. Payment may be made in Cash, by Personal Cheques (with proper identification, at the discretion of International Auction Galleries), or by Bank Transfer or Major Credit Cards as stipulated. Successful postal bidders will be notified by mail via an auction receipt. All postal bidder accounts must be fully finalised within 14 days of the sale date.

3. A 19.25% buyer's premium will be added to the knock down price of each lot (includes GST where applicable). **All payments by American Express will incur a 3% surcharge.**

4. Unless otherwise specifically stated by the auctioneer, each new bid shall be raised above the previous bid by such amount as is determined by the auctioneer during the course of the auction, and no party shall be allowed to retract his or her bid after acknowledgment by the auctioneer.

5. The auctioneer reserves the right to refuse any bid and to withdraw any goods from sale at any time, or to disclose any reserves or vendor information, without having to state any reason.

6. At the fall of the hammer, (if required by the Auctioneer), the purchaser shall give his or her full name and address, and pay 25% of the purchase price deposit. In default, the lot(s) purchased may, at the auctioneer's discretion, immediately be reoffered and resold. All lots sold will remain the property of the owner/vendor until cleared payment is made in full. Only then will the title of ownership of the lots pass to the purchaser, irrespective of any terms or deferment of payment. A cheque and signed guarantee of payment form will be necessary on all 30 day trade accounts.

7. Except as otherwise provided by state or federal law, no condition or warranty is given or implied by the auctioneer in respect of any lot offered for sale via auction. As all lots are given for inspection prior to the commencement of the sale, it shall be presumed that the goods have been inspected and that the purchaser accepts the goods are sold with all faults, and all lots are sold as is, on the basis of Caveat Emptor. No error or mis-description of any lot shall give cause for an invalidation of sale or an abatement of price, and the auctioneer shall not be held responsible for any such error, despite all care being taken. All lots are inspected and offered in good faith to the best of our determination to be genuine as described (except where so noted), however no guarantee is undertaken with respect to refunds on this basis.

8. The auctioneer shall not be liable for any description or mis-description given on any of the goods presented here for sale in any way. Any statement as to the description of goods is given as a statement of opinion only as represented to the auctioneer, and is not to be relied on as a representation of fact. Whilst every effort is made, the auctioneer gives no warranty that the quantities or any grading given with respect to the description of any lot as stated is correct. All images used are given as a guide only, and are not guaranteed to be an accurate representation.

9. No lots purchased by a bidder may be returned, including those lots where the bidder is acting as agent for another. There are no returns or refunds except for reason of lack of authenticity (as is stated in clause 7 and 8 above detailing liability). It is assumed that all intending bidders (including all postal and internet bidders) have obtained their own satisfaction and/or done due diligence on all lots before submitting any bids in any manner, and all bids thusly submitted are subject to the full terms and conditions of sale. Items purchased and submitted to third party grading immediately voids any and all further rights of return. The auctioneer accepts no responsibility for any mistakes in any postal or phone bidding conducted. Late remittance of payments constitutes just cause for revocation of all return privileges. In the event that a bidder is acting as an agent for another party, and that agency has not been disclosed to the auctioneer in writing 24 hours before the sale date, then the bidder is deemed by the auctioneer to be the final buyer in all respects, and is fully responsible for all payments, fees and charges. **In no event may any lot(s) be returned after Twenty One (21) days from the date of the auction. All sales are then final.**

10. If any purchaser fails to comply with any of conditions of sale as outlined here or if any monies paid in any way given on settlement of account for any goods is dishonoured or unfulfilled, then any monies which the purchaser has paid to the auctioneer on account of the purchase shall then be forfeited absolutely to the vendor. The auctioneer acting as agent for the vendor is at liberty to re-sell the lot(s) in any manner and upon such terms and conditions as they may deem proper and/or to then sue the purchaser for any loss or resulting damages as set out below. Damages include all losses and expenses incurred by the vendor or the auctioneer as well as all damages which the vendor or the auctioneer may sustain resulting from any re-sale and storage, which shall then be recovered from the purchaser as liquidated damages. The auctioneer (acting on behalf of the vendor) in the event of such resale is entitled to:

a) The total amount of any and all commissions and/or buyers premiums applicable or any other fees and commissions lost as a result of the purchaser defaulting on the purchase.

b) The full cost of advertising and all other expenses related to re-sale as deemed necessary, including any storage costs and insurance charges.

c) Any differential in price from the initial sale price to the price achieved in re sale of the items(s).

11. A service charge of 2% compound per month (or part thereof) will be added to overdue accounts (30 days after the date of Auction is the overdue period for all unpaid accounts). In any event the title of any lots sold will not pass to the purchaser until the full amount of the purchasers auction account has been fully paid and remitted to the vendor, including any other service charges, storage or any other fees resulting from any late payments.

12. Estimates are given only as a guide, and not given as starting points for bidding: Lots may sell for a price greater than or less than these estimates. Bidding will start at an increment above the lowest postal bid received, or at the Auctioneers sole discretion. All prices are in Australian Dollars.

13. All images, text and information supplied in this catalogue remain the property of International Auction Galleries, and may not be used or transmitted in any way without written permission.



LOT 80



LOT 101



LOT 226



LOT 327



LOT 15



LOT 79



LOT 93



LOT 100



LOT 108



LOT 226



LOT 276



LOT 277



LOT 323



LOT 326



LOT 328



LOT 332



LOT 335



LOT 343