

*The Malcolm Burgess Collection*  
**AUCTION** 102

Thursday 18th September 2025

Lots 1232 - 1471







LOT 1245



LOT 1411



LOT 1431



LOT 1435

# The Malcolm Burgess Collection

*The late Malcolm Burgess (1951-1991) had a passion for these early pre-decimal coins. He started when he was a boy in the late 1950s and continued right through until he passed away at the young age of 40 years.*

*He saved up his pocket money until he had enough to buy the smaller coins but his goal was always to one day own the famous one. ....a rare uncirculated 1930 penny in superior condition.*

*He had many thoughts over the years about how he'd like to see the collection honoured. He hoped to be able to have it seen in a museum one day so all children could see it there and learn about the history of our currency and of the value of saving and how he got to build an almost complete array of high quality pre decimal coins that could precede him for all to see. Sadly, he never got to see that dream fulfilled.*

*Today the collection will be split up and sold as individual lots. There may be someone out there who is thinking similar thoughts, and these individual coins can be the catalyst for many such collections.*

*That would be a fitting way to continue his legacy.*

**D. Burgess**





# The Malcolm Burgess Collection

## Halfpenny



1232 1911. Mint red and brown. *UNC*

\$180 - \$200



1233 1912H. Mint red and brown. *UNC*

\$180 - \$200



1234 1913. Brown with some red/blue lustre  
*UNC/Ch.UNC*

\$220 - \$240



1235 1914. Brown and some red lustre. *UNC*

\$220 - \$240



1236 1914H. Brown with hints of mint red. *UNC*

\$200 - \$220



1237 1915H. Key date. Mint brown and red, tone a little uneven on Obverse, hairline behind kings head. Scarce. *UNC*

\$1100 - \$1200



1238 1917I. Mint red and brown with some bright lustre. *UNC/Ch.UNC*

\$240 - \$260



1239 1918I. Key date. Lustrous brown and mint red/blue. Wells truck and very scarce in this grade. *Ch.UNC*

\$1800 - \$2000



1240 1919. Mint red and brown.  
*UNC/Ch.UNC*

\$240 - \$260





1241 1919. Mostly mint red. *Ch.UNC*

\$300 - \$320



1243 1921. Brown with traces of uneven red. *UNC*

\$150 - \$160



1242 1920. Subdued mostly mint red, minor Obverse spots. *Ch.UNC*

\$260 - \$280



1244 1922. Brown with some mint red, Obverse spot. *UNC*

\$150 - \$160



1245 1923. Key date. Light slightly uneven tone with underlying brown mint lustre, eight clear pearls, full centre diamond and complete band. Minor planchet flaws on Reverse with extensive die cracks around legend and a few light marks/hairlines in fields. Very rare in this grade and amongst the finest known. *aU/UNC*

\$12000 - \$14000



1246 1924. Lustrous mint brown. Scarce. *UNC*

\$340 - \$360



1247 1925. Brown with some red lustre. Scarce. *UNC/Ch.UNC*

\$450 - \$500





1248 1926. Mint brown with some red lustre.  
*UNC/Ch.UNC*

\$130 - \$140



1252 1930. Brown with some underlying mint red lustre. *UNC*

\$260 - \$280



1249 1927. Mint red and brown, a few spots.  
*Ch.UNC*

\$170 - \$180



1253 1931. Slightly uneven mint red and brown.  
Scarce. *UNC/Ch.UNC*

\$600 - \$700



1250 1928. Brown with some uneven red lustre,  
a few spots. *UNC/Ch.UNC*

\$300 - \$320



1254 1932. Red and brown. *UNC*

\$130 - \$140



1255 1933. Uneven partial brown and some red  
lustre. *UNC/Ch.UNC*

\$100 - \$120



1251 1929. Virtually full bright mint red with  
traces of attractive greenish lustre. A  
beautiful, near as struck example and one  
of the finest known of this tougher date,  
with none graded MS RD by PCGS. Rare.  
*GEM UNC*

\$1800 - \$2000



1256 1934. Brown with some red lustre. *UNC/  
Ch.UNC*

\$150 - \$160





1257 1935. Mint red and brown. *UNC/Ch.UNC*  
\$150 - \$160



1262 1940. Brown with some red lustre. *UNC/Ch.UNC*  
\$40 - \$50



1258 1936. Brown with hints of mint red. *UNC*  
\$80 - \$100



1263 1941. Brown with some uneven red lustre. *UNC/Ch.UNC*  
\$40 - \$50



1259 1938. Mostly mint red. *Ch.UNC*  
\$80 - \$100



1264 1942. Mint brown with some red lustre. *UNC/Ch.UNC*  
\$70 - \$80



1260 1939. Mint red and brown with some carbon spots. *UNC/Ch.UNC*  
\$50 - \$60



1265 1942Y, 1942I. Mostly lustrous brown. (2 coins total). *UNC/Ch.UNC*  
\$50 - \$60



1261 1939 Roo. Light brown with some trace of underlying lustre. *UNC*  
\$240 - \$260





1266 1943, 1944, 1945. Brown. (3 coins total).  
*EF-UNC*

\$30 - \$40



1269 1954, 1955, 1959, 1960Y, 1961Y, 1964Y.  
Mostly red/brown. (6 coins total). *UNC-Ch.UNC*

\$40 - \$50



1267 1946, 1951. Mint brown and red. Former  
rotated slightly. (2 coins total).  
*UNC*

\$30 - \$40



1270 1955 Proof Halfpenny. Mint red and some  
brown, minor spots. Scarce. *FDC*

\$1200 - \$1400



1268 1951Y, 1951PL, 1952. Red/brown, last with  
rainbow lustre. (3 coins total).  
*UNC/Ch.UNC*

\$40 - \$50



1271 1961Y Proof Halfpenny. Matte, uneven  
brown toned. *aFDC*

\$70 - \$80



1272 1962Y Proof Halfpenny. Matte red with  
some tone. *FDC*

\$130 - \$140





1273 1963Y Proof Halfpenny. Subdued matte dark red/brown tone. *aFDC*

\$70 - \$80



1277 1913. Even brown with subdued red lustre. A well struck example. *Ch.UNC*

\$700 - \$800



1274 1963Y Proof Halfpenny. Subdued matte red with some tone. *FDC*

\$130 - \$140



1278 1915. English Obverse. Brown with some slightly uneven red lustre. Scarce. *UNC/Ch.UNC*

\$1100 - \$1200

## Penny



1275 1911. Almost full mint reddish lustre, probably a Baldwins example, with minimal wear and only a few minor marks. *Ch.UNC/GEM*

\$1100 - \$1200



1279 1915H. Brown with some mint red. *UNC*

\$800 - \$900



1276 1912. Mint brown with some red lustre. *UNC/Ch.UNC*

\$360 - \$380



1280 1916I. Mint red and brown. *Ch.UNC*

\$260 - \$280





- 1281 1916I. Mint red and brown to mostly brown with trace of red, sharply struck. *Ch.UNC/GEM*

\$420 - \$440



- 1285 1920 Plain. Brown mint lustre. Very scarce. *UNC*

\$800 - \$900



- 1282 1917I. Mint red and brown lustre, sharply struck with prooflike rims. *Ch.UNC/GEM*

\$600 - \$700



- 1286 1920 Dot above bottom scroll. Mint red and brown. Very scarce in this grade. *UNC/Ch.UNC*

\$1200 - \$1400



- 1283 1918I. Key date. Brown with some mint red lustre, and well struck. Very scarce this grade. *UNC/Ch.UNC*

\$2100 - \$2200



- 1287 1920 Dot below bottom scroll. Indian die. Almost full mint red. Very scarce in this grade. *Ch.UNC/GEM*

\$1100 - \$1200



- 1284 1919. Mostly mint red, and well struck. *Ch.UNC/GEM*

\$700 - \$800



- 1288 1921. Brown lustre with some traces of red, edge knocks along top rims. *aU/UNC*

\$220 - \$240





1289 1922. Brown lustre, Obverse with some mint red. *UNC*

\$280 - \$300



1293 1926. Brown lustre with traces of red, some edge knocks. *UNC*

\$280 - \$300



1290 1923. Mint brown and red lustre. Well struck. Scarce. *Ch.UNC*

\$600 - \$700



1294 1927. Brown with some reddish rainbow lustre. *Ch.UNC*

\$220 - \$240



1291 1924. Mint brown and some red lustre, Reverse verdigris spot that appears to have damaged surface. *aU/UNC*

\$100 - \$120



1295 1928. Slightly patchy brown with some red lustre. *UNC/Ch.UNC*

\$320 - \$340



1292 1925. Key date. Brown lustre with trace red, Small Obverse planchet flaw at edge of Kings Crown and at left to edge, but otherwise seven pearls visible. very scarce. *aUNC*

\$800 - \$900



1296 1929. Brown Obverse with a mint red and brown Reverse (probably from storage in a press in album). *UNC/Ch.UNC*

\$220 - \$240





1297 1930 Penny. THE trophy coin of the Pre Decimal series, and often described as the most important copper coin of the 20th Century. Exhibiting considerable mint red colour behind the devices with good surfaces, with an Obverse hairline behind Kings head the only detractor. It is an obvious early strike, as it only hints at the usual striking weaknesses of the issue and is sharp throughout with minimal wear. The finest grade circulation 1930 Penny in private hands and the only known example with this amount of mint red. It could well be argued that its importance makes it rarer than the Proof examples, of which six exist. With good provenance being Ex Spink Auctions S 22 July 1987 (Lot 2250 and the front cover image and sold for \$46,500) - \$10,000 above estimate and the 2nd top price in the auction. Also ex Spink Sale 26 Nov 1988 (Lot 906) and IAG S 74 June 2011 (Lot 453). Superb, and of the highest importance and rarity. *gEF/aUNC*

\$120000 - \$140000





1298 1932. Mint brown and some red lustre.  
*Ch.UNC*

\$220 - \$240



1302 1935. Brown and mint red lustre. *Ch.UNC*

\$180 - \$200



1299 1933/2 Overdate. Mint red and brown lustre, and well struck. Rare in this grade and one of the finest known.  
*UNC/Ch.UNC*

\$1400 - \$1500



1303 1936. Brown with some red lustre, weak at top scroll. *UNC/Ch.UNC*

\$100 - \$120



1304 1938. Mint red and brown lustre. *Ch.UNC*

\$70 - \$80



1300 1933. Mostly mint red with a few tone spots. *Ch.UNC/GEM*

\$300 - \$320



1305 1940. Lustrous mint red and brown.  
*Ch.UNC*

\$100 - \$120



1301 1934. Mint red and brown lustre, some slight Obverse spotting. *Ch.UNC*

\$300 - \$320



1306 1941. Lustrous mostly mint red. *Ch.UNC*

\$80 - \$100





1307 1942Y. Mint brown. *UNC*

\$70 - \$80



1311 1947, 1948. Mostly mint red. (2 coins total). *Ch.UNC*

\$70 - \$80



1308 1942I, 1943Y, 1943I. Brown with subdued red lustre. (3 coins total). *UNC*

\$50 - \$60



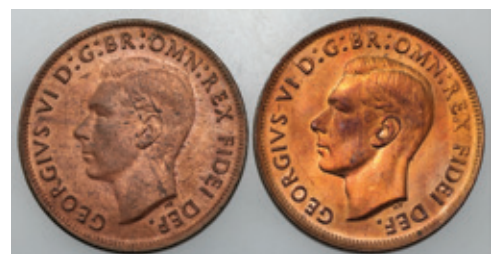
1312 1947Y, 1948Y. Brown lustre with hints of red. Scarce dates. (2 coins total). *UNC*

\$220 - \$240



1309 1944, 1944Y. Lustrous brown. (2 coins total). *aUNC*

\$50 - \$60



1313 1949, 1950. Mostly mint red. (2 coins total). *Ch.UNC*

\$70 - \$80



1310 1946. Key date. Lustrous dark brown with some mint red. Scarce. *UNC*

\$600 - \$700





1314 1950, 1953. Mint red, mint red and brown.  
(2 coins total). *UNC-Ch.UNC*

\$70 - \$80



1317 1952, 1952A. Mostly mint red to mint red.  
(2 coins total). *Ch.UNC-Ch.UNC/GEM*

\$70 - \$80



1315 1950Y, 1951. Brown with red lustre. (2  
coins total). *UNC-Ch.UNC*

\$70 - \$80



1318 1953, 1953A. Mint red and brown. (2 coins  
total). *Ch.UNC*

\$70 - \$80



1316 1951PL, 1951Y. Brown with red lustre to  
mostly red. (2 coins total). *Ch.UNC*

\$50 - \$60



1319 1955, 1956. Mostly red and brown lustre.  
(2 coins total). *Ch.UNC*

\$80 - \$100



- 1320 1956Y, 1958. Brown with some red lustre.  
(2 coins total). *UNC*

\$40 - \$50



- 1321 1959, 1959Y, 1960Y, 1961Y, 1962Y, 1964Y.  
Brown with some red/rainbow red. (6 coins  
total). *aUNC-Ch.UNC*

\$30 - \$40



- 1322 1955Y Proof Penny. Mostly mint red.  
Scarce. *FDC*

\$2300 - \$2400



- 1323 1957Y Proof Penny. Matte red brown  
toned. *aFDC*

\$100 - \$120



- 1324 1962Y Proof Penny. Matte red with some  
patchy tone. *FDC*

\$130 - \$140

### Threepence



- 1325 1910. A hint of peripheral tone, Obverse  
hairlines. *gEF/aUNC*

\$70 - \$80



- 1326 1910. Light tone with some bloom, edge  
knock. *gEF/aUNC*

\$70 - \$80



- 1327 1910. Frosty bloom, Reverse die crack with  
a few marks. *Ch.UNC*

\$130 - \$140





1328 1911. Light tone with mint bloom. *Ch.UNC*  
\$340 - \$360



1333 1918M. Frosty mint bloom, a few marks, edge knock. *Ch.UNC*  
\$280 - \$300



1329 1914. Old stipple toned with underlying bloom. *aUNC*  
\$260 - \$280



1334 1919M. Frosty mint bloom, a few marks. *Ch.UNC*  
\$280 - \$300



1330 1915. Light old reddish toned. *gVF/aEF*  
\$130 - \$140



1331 1916M. Dark old attractive reddish/blue toned with underlying mint bloom, a few minor marks. Very scarce. *Ch.UNC/GEM*  
\$900 - \$1000



1335 1920M. Beautiful old red/blue toned with underlying mint bloom. Very scarce in this grade, and amongst the finest known. *Ch.UNC/GEM*  
\$1400 - \$1600



1332 1917M. Light tone with bright bloom. Reverse die crack - Three legged Emu variety. *Ch.UNC/GEM*  
\$300 - \$320



1336 1921M. Frosty mint bloom, a few marks. *Ch.UNC*  
\$180 - \$200



- 1337 1921M. Light tone with bright mint bloom, a few Obverse hairlines and a Reverse die crack. Scarce. *Ch.UNC*

\$800 - \$900



- 1338 1922. Light tone with bloom, some minor tone spots with a few minor marks. *Ch.UNC*

\$320 - \$340



- 1339 1923. Key date. Deep old toned with some underlying bloom, Obverse tone spot. Very scarce. *UNC/Ch.UNC*

\$1800 - \$2000



- 1340 1924. Light tone with some bloom, a little weakly struck in places. *UNC*

\$450 - \$500



- 1341 1924. Lovely old pinkish toned with significant underlying lustre and a large interesting Reverse die crack. Well struck with virtually flawless surfaces, and the best of this date we can remember seeing. With old pack stating - Mint state, lovely tone Ex Frank Gates collection as the finest known and C. Jaggard collection. Very rare in this high grade and one of the finest known. *GEM UNC*

\$2800 - \$3000



- 1342 1925. Bright mint bloom. *Ch.UNC*

\$320 - \$340



- 1343 1926. Light tone, some Obverse marks. *aU/UNC*

\$90 - \$100



- 1344 1927. Light tone with bloom. *Ch.UNC*

\$150 - \$160





- 1345 1928. Light tone with mint bloom, some Obverse marks. *Ch.UNC*

\$130 - \$140



- 1350 1938. Light tone with some bloom. *Ch.UNC/GEM*

\$70 - \$80



- 1346 1934. Missing RH top side of Crown variety. Light tone with mint bloom. With old pack stating - Mint state, rare missing R.H crown var. ex Frank Gates collection one of the finest and most interesting known. Very scarce. *Ch.UNC/GEM*

\$450 - \$500



- 1351 1939. Light satin tone with bloom. *Ch.UNC/GEM*

\$100 - \$120



- 1347 1934/33 Overdate. Toned. Scarce. *EF*

\$220 - \$240



- 1352 1941. Light tone. *Ch.UNC*

\$50 - \$60



- 1348 1935. Light soft tone with underlying mint bloom. *Ch.UNC/GEM*

\$280 - \$300



- 1353 1942D, 1942S, 1943, 1943D. Light tone with some bloom. (4 coins total). *UNC/Ch.UNC*

\$40 - \$50



- 1349 1936. Light tone, Obverse tone spot. *Ch.UNC/GEM*

\$150 - \$160



- 1354 1942M. Key date. Light tone with a couple of tone spots, minor Obverse hairlines, however a good strike for this tough date. Scarce. *UNC*

\$600 - \$700



- 1355 1944S, 1947, 1948, 1949, 1950, 1951, 1951PL, 1952. Light tone with bloom. (8 coins total). *aUNC-Ch.UNC*
- \$70 - \$80



- 1356 1953, 1955, 1956, 1957, 1958. Light tone with bloom. (5 coins total). *Ch.UNC/GEM*
- \$70 - \$80



- 1357 1959, 1960, 1961, 1962, 1963, 1964. Light tone with bloom. (6 coins total). *Ch.UNC-GEM*
- \$50 - \$60

## Sixpence



- 1358 1910. Dark old toned. *gEF/aUNC*
- \$100 - \$120



- 1359 1910. Light tone with mint bloom. *Ch.UNC*
- \$240 - \$260



- 1360 1911. Light tone with some bloom. *UNC*
- \$600 - \$700



- 1361 1912. Cleaned of old tone, sharp Obverse details with some hairlines. *gEF/aUNC*
- \$240 - \$260



- 1362 1914. Frosty bloom with some Obverse hairlines. *UNC*
- \$450 - \$500





1363 1916M. Light reddish toned with mint bloom, a few Obverse marks. *UNC/Ch.UNC*

\$600 - \$700



1367 1920M. Attractive old red/blue tone with mint bloom, some Obverse marks. *Ch.UNC*

\$900 - \$1000



1364 1917M. Light tone with mint bloom, tiny edge clip on top rim. *Ch.UNC*

\$800 - \$900



1368 1921. Light reddish toned with mint bloom, a few minor marks. *Ch.UNC*

\$340 - \$360



1365 1918M. Old steel-toned with hints of red with mint bloom. Sharply struck with lovely eye appeal. With old pack stating - One of the finest known, superb uncirculated MS 64. One of the finest known and rare in this condition. *Ch.UNC/GEM*

\$4500 - \$5000



1369 1922. Dark gunmetal toned, well struck for this issue, some minor Reverse die cracks and planchet flaw. Very scarce. *Ch.UNC*

\$1800 - \$2000



1366 1919M. Light tone with bloom, well struck with a few Obverse marks. *UNC/Ch.UNC*

\$600 - \$700



1370 1923. Light tone with some bloom. *UNC*

\$700 - \$800



1371 1924. Light tone with significant underlying mint bloom. Specimen like strike, with typical slight die rotation and Reverse wire rim, fully struck up with an Obverse hairline the only small detractor. With old pack stating - Ex Frank Gates collection rarity, perfect mint state Specimen type. One of the finest known, and very scarce as such. *Ch.UNC/GEM*

\$3100 - \$3200



1375 1928. Frosty bloom with Obverse marks. *UNC/Ch.UNC*

\$200 - \$220



1376 1934. Light soft tone with some bloom. *Ch.UNC*

\$600 - \$700



1372 1925. Dark toned with extensive Reverse die cracks and struck slightly out of collar with a slightly raised rim. *UNC/Ch.UNC*

\$340 - \$360



1377 1935. Soft tone with satin bloom. Scarce. *Ch.UNC/GEM*

\$1100 - \$1200



1373 1926. Bright bloom with some Obverse marks. *UNC/Ch.UNC*

\$200 - \$220



1378 1936. Toned with bright underlying bloom, Obverse tone spot with minor marks. *Ch.UNC/GEM*

\$180 - \$200



1374 1927. Frosty bloom with Obverse marks. *UNC/Ch.UNC*

\$200 - \$220



1379 1938. Frosty bloom, some Obverse hairlines. *Ch.UNC*

\$70 - \$80





1380 1940. Slight tone with bloom. *Ch.UNC*

\$100 - \$120



1384 1943D, 1943S. Light hint of tone. (2 coins total). *UNC/Ch.UNC*



\$30 - \$40



1381 1941. Slight tone with bright bloom, Obverse reeding marks. *Ch.UNC*

\$50 - \$60



1385 1944S, 1945. Former with bright bloom, latter toned. (2 coins total). *UNC*



\$30 - \$40



1382 1942. Frosty mint bloom. *Ch.UNC/GEM*

\$70 - \$80



1383 1942D, 1942S. Light tone with frosty bloom. (2 coins total). *Ch.UNC/GEM*

\$70 - \$80



1386 1946, 1948, Light tone. (2 coins total). *UNC/Ch.UNC*



\$40 - \$50



- 1387 1950, 1951, 1951PL. Mint bloom. (3 coins total). *UNC-Ch.UNC*

\$40 - \$50



- 1388 1952. Key date. Satin mint bloom. Very scarce this nice. *Ch.UNC*

\$340 - \$360



- 1389 1953, 1954, 1955. Light tone with bloom. (3 coins total). *UNC-Ch.UNC*

\$150 - \$160



- 1390 1957, 1958, 1959. Light tone. (3 coins total). *Ch.UNC*

\$50 - \$60



- 1391 1960, 1961, 1962, 1963. Light tone with bloom. (4 coins total). *Ch.UNC-GEM*

\$40 - \$50

### Shilling



- 1392 1910. Golden toning with bloom, sharp strike with Obverse marks. *UNC/Ch.UNC*

\$240 - \$260



- 1393 1910. Bright mint bloom with sharp details. *Ch.UNC/GEM*

\$450 - \$500



- 1394 1911. Attractive old steel-grey toned. *UNC/Ch.UNC*

\$900 - \$1000



- 1395 1912. Toned with some bloom, weakly struck as usual. Scarce. *aUNC*

\$600 - \$700





1396 1913. Probably once dipped, a little weak along top rims with minor edge knocks. *UNC*

\$1100 - \$1200



1400 1917M. Bright frosty bloom. *Ch.UNC*

\$260 - \$280



1401 1918M. Bright bloom, spot removed in front of Emu. *UNC/Ch.UNC*

\$240 - \$260



1397 1914. Light old tone with some underlying bloom. *UNC*

\$700 - \$800



1398 1915. Light tone with some bloom, a little weak on the Obverse as usual with some scratching on Kings face and in fields, Reverse die cracks. Scarce. *gEF/aUNC*

\$600 - \$700



1402 1920M. Light tone with bright mint bloom, a few minor marks. Very scarce in this grade. *UNC/Ch.UNC*

\$2100 - \$2200



1399 1916M. Bright bloom, possibly once dipped, die crack through kangaroo with a few marks. *UNC/Ch.UNC*

\$220 - \$240



1403 1921 Star. Key date. Light milky uneven tone on Obverse, a little flat on feathers. Scarce. *aU/UNC*

\$1200 - \$1400



- 1404 1922. Light tone with mint bloom, a few Obverse marks with an orange peel surface. *UNC*

\$300 - \$320



- 1408 1927, 1942S. First with green Obverse spotting. (2 coins total). *aUNC-Ch.UNC*

\$100 - \$120



- 1405 1924. Light tone with mint bloom, sharp details with Reverse die crack and hairlines. Very scarce in this grade. *Ch.UNC*

\$2100 - \$2200



- 1409 1927. Frosty mint bloom, Obverse hairlines/marks and some slight rubbing. *UNC*

\$150 - \$160



- 1406 1925/23 Overdate. Light old tone with some bloom, a little weakly struck with a cud above the star. *UNC*

\$340 - \$360



- 1410 1931. Once dipped/cleaned with sharp details. *UNC/Ch.UNC*

\$170 - \$180



- 1407 1926. Some tone, heavy Obverse bag marking and tone spot. *UNC*

\$130 - \$140



- 1411 1933. Key date. Light soft tone with underlying mint bloom and a sharp star with good details, a small mark in Obverse behind Kings head with some minor Reverse hairlines and a slight scrape on the shield. Rare in this grade. *UNC/Ch.UNC*

\$6000 - \$7000





1412 1934. Light gunmetal tone with underlying bloom, light Reverse die crack. A lovely example. *Ch.UNC/GEM*

\$700 - \$800



1417 1940. Light tone with bright mint bloom. Scarce. *Ch.UNC*

\$320 - \$340



1413 1935. Light tone with slight rainbow colour to Obverse with some bloom. *Ch.UNC*

\$340 - \$360



1418 1941. Light steel tone with bright mint bloom. *Ch.UNC*

\$70 - \$80



1414 1936. Light tone with frosty mint bloom. *Ch.UNC/GEM*

\$300 - \$320



1419 1942. Frosty satin mint bloom, virtually as struck and scarce as such. *GEM UNC*

\$240 - \$260



1415 1938. Mint bloom, a few Obverse marks. *UNC/Ch.UNC*

\$70 - \$80



1416 1939. Light soft tone with underlying bloom. *Ch.UNC/GEM*

\$180 - \$200



1420 1942S. Bright bloom. *Ch.UNC*

\$30 - \$40



1421 1943, 1944S. Soft tone. (2 coins total). *Ch.UNC*

\$50 - \$60



1424 1948, 1950. Frosty mint bloom. (2 coins total). *UNC/Ch.UNC*

\$70 - \$80



1422 1943S, 1944S. Bright mint bloom. (2 coins total). *Ch.UNC/GEM*

\$70 - \$80



1425 1952, 1953, 1955. Light tone with some bloom. (3 coins total). *UNC-Ch.UNC/GEM*

\$90 - \$100



1423 1946 Double dot. Light tone with slight verdigris. *UNC*

\$100 - \$120



1426 1957, 1958, 1959, 1960, 1961, 1962, 1963. Mint bloom, some light tone. (7 coins total). *Ch.UNC-GEM*

\$130 - \$140





1427 1955 Proof Shilling. Light tone. *FDC*  
\$100 - \$120



1428 1955 Proof Shilling. *FDC*  
\$100 - \$120

## Florin



1429 1910. Light old tone with mint bloom, a sharp reverse with some Obverse contact marks. *UNC/Ch.UNC*  
\$1800 - \$2000



1430 1910. Light old tone with frosty mint bloom, well struck with sharp feathers, some hairlines/scratching in fields behind Kangaroo and a few Obverse marks. *Ch.UNC*  
\$2300 - \$2400



1431 1911. Light golden tone with mint bloom, a few surface marks and minor edge knocks, otherwise a sharp example of this tough date. Rare in this condition. *Ch.UNC*  
\$6000 - \$7000



1432 1912. Light tone with bloom, tone spot on Obverse edge with some slight reverse flashing with a few minor marks and some edge knocks with a sharp band and star. Well struck for this tough date. Rare this condition. *UNC/Ch.UNC*  
\$4500 - \$5000



1433 1913. Light tone with some frosty mint bloom, some Obverse surface marks/hairlines on Kings face with a small edge knock, but well struck up for this date with a nice Reverse. Rare this condition, and amongst the finest known. *UNC/Ch.UNC*  
\$6000 - \$7000



1434 1914. Bright mint bloom, a little weakly struck on Obverse with some marks.  
*UNC/Ch.UNC*

\$1700 - \$1800



1435 1914H Florin. Key date. Lovely old violet toned with significant mint bloom, a sharp strike with a full star and slight orange peel surfaces with just the lightest wear to high points, but with lovely eye appeal. Rare this condition, and amongst the finest known. *Ch.UNC/GEM*

\$11000 - \$12000



1436 1915. Key date. Light tone with bloom, minor cut through Kings crown and some surface hairlines, but with sharp details. Rare. *UNC*

\$4500 - \$5000



1437 1915H. Light old toned with some soft frosty mint bloom with slight orange peel surfaces and some Obverse hairlines. Usual weak strike for this date. Scarce. *UNC*

\$2300 - \$2400





1438 1916M. Soft mint bloom, some surface hairlines. *UNC*

\$800 - \$900



1442 1921. Light old tone with satin mint bloom, some Obverse hairlines with a large flash in front of Kings face. Scarce. *Ch.UNC*

\$2500 - \$2600



1439 1917M. Superb strike with bright mint bloom and a touch of soft tone. *Ch.UNC/GEM*

\$1400 - \$1500



1443 1922. Light tone with some bloom, orange peel surfaces. Scarce. *UNC/Ch.UNC*

\$2500 - \$2600



1440 1918M. Superb strike with frosty mint bloom and a tone spot on Obverse, some surface marks/flashing behind Emus head. *Ch.UNC*

\$1800 - \$2000



1444 1924. Sharp strike with bright mirror bloom, but some Reverse scratches/hairlines. *UNC*

\$800 - \$900



1441 1919M. Light tone with frosty mint bloom, well struck with some hairlines. Very scarce. *Ch.UNC*

\$3100 - \$3200



1445 1925. Some slight Obverse flashing and a few minor marks. *UNC*

\$450 - \$500



- 1446 1926. Light tone with bloom, sharp strike with some minor Reverse marks and orange peel Obverse surface. *Ch.UNC*  
\$1200 - \$1400



- 1451 1931. Bright bloom, probably once dipped. *Ch.UNC*  
\$260 - \$280



- 1447 1927 Canberra. Bright bloom, a few minor marks and slight tone spot. *UNC/Ch.UNC*  
\$90 - \$100



- 1452 1932. Key date. Probably once dipped of light tone with slightly grainy looking surfaces, but with a sharp star and feathers. Rare. *UNC*  
\$4500 - \$5000



- 1448 1927. Bright frosty bloom, die cracks both sides with a few minor marks. *Ch.UNC*  
\$600 - \$700



- 1453 1933. Once cleaned of tone, a few minor marks on Kings head and an edge knock, otherwise with good Reverse details. Scarce. *UNC*  
\$2100 - \$2200



- 1449 1928. Frosty mint bloom, some surface hairlines. *UNC/Ch.UNC*  
\$450 - \$500



- 1450 1931. Milky tone, Obverse edge knock. *UNC*  
\$220 - \$240



- 1454 1934. Slight milky tone. *UNC*  
\$420 - \$440





- 1455 1934/35 Melbourne Centenary. Prooflike Type I die markers with almost full wreath. *UNC/Ch.UNC*
- \$700 - \$800



- 1459 1939. Key date. Soft frosty satin mint bloom. A virtually mark free example and very scarce as such. *Ch.UNC/GEM*
- \$1800 - \$2000



- 1456 1935. Light tone with satin mint bloom. *Ch.UNC/GEM*
- \$1200 - \$1400



- 1460 1940. Light tone with mint bloom. *Ch.UNC/GEM*
- \$80 - \$100



- 1457 1936. Light old tone with frosty bloom, some light Obverse hairlines/marks. *Ch.UNC*
- \$220 - \$240



- 1461 1941. Soft mint bloom, a few marks. *Ch.UNC*
- \$90 - \$100



- 1458 1938. Light tone with bloom, shallow Obverse scratch. *UNC*
- \$70 - \$80



- 1462 1942, 1943. Soft mint bloom. (2 coins total). *UNC/Ch.UNC*
- \$70 - \$80



- 1463 1943S, 1944S. Latter lightly toned. (2 coins total). *Ch.UNC*

\$70 - \$80



- 1464 1944S, 1945, 1946. Light tone, some marks. (3 coins total). *aU-UNC*

\$40 - \$50



- 1465 1947, 1951, 1952. Light tone, a few marks. (3 coins total). *UNC*

\$40 - \$50



- 1466 1953, 1954, 1954 Royal Visit. Light tone with bloom. (3 coins total). *Ch.UNC*

\$80 - \$100



- 1467 1957, 1958, 1959. Light tone with bloom. (3 coins total). *Ch.UNC*

\$70 - \$80



- 1468 1960, 1961, 1962, 1963. Bright bloom, a few marks. (4 coins total). *Ch.UNC*

\$50 - \$60





## Crown



1469 1937. Toned. (2 coins total). *VF-gVF*

\$80 - \$100



1470 1937. Light tone with mint bloom, free of most of the usual surface marks. *UNC/Ch.UNC*

\$150 - \$160



1471 1938. Light tone with some bloom, minor lamination flaw with a few usual marks on Obverse. *aUNC*

\$220 - \$240



LOT 1365



LOT 1432



LOT 1433



LOT 1436





LOT 1297



INTERNATIONAL  
**AUCTION**  
GALLERIES

[www.iagauctions.com](http://www.iagauctions.com)

Ph: 07 5538 0300 | Fax: 07 5538 7296 | E: [mail@iagauctions.com](mailto:mail@iagauctions.com)  
P.O. Box 1380 Broadbeach Qld 4218 Australia