



INTERNATIONAL
AUCTION
GALLERIES



Australian & World Rare Coin & Banknote

AUCTION 83

Saturday 23rd April 2016

Sofitel Hotel, Gold Coast Queensland



THE COMMON

AUSTRALIANN

No. Z 493466

The Treasurer of

promises to pay the Bearer

at the bank



ONE HUNDRED POUNDS

100

HUNDRED



LOT 453



LOT 454



LOT 553



LOT 568

Welcome To Sale 83

Welcome to our first Live Auction for 2016! This Sale is packed with many interesting and high grade items as well as lots of fantastic bargains thanks to a large number of estates and some final liquidated stock being brought to market. There is no doubt the last chances to buy at the low end of the market is now, as we are seeing an almost complete halt to the amount of forced sellers, thus we can see that prices will now only start to rise with supply of quality material drying up!

We are continuing to expand and improve our Online bidding experience with every sale, and with the continued growth of our mailing list and Online bidders now numbering nearly 2000 clients, ALL printed catalogues will only be on a subscription only basis for clients who have not been active buyers. With the cost of printing and postage continuing to rise substantially, the biennial fee is only \$50 for 2016/17 subscriptions, well under producing and posting costs. You can, of course, still download the FREE fully illustrated PDF's or view it on Issuu, or look Online on our website, where every single Auction lot's image can be viewed in full screen high resolution, a feature that only IAG offers.

Online bidding will be open for 2 weeks for all registered Online members, and you can bid online right up until 2 hours before the sale starts. Members can also view all lots with the current bids, as well as their current account balance as bidding stands and much more, giving them a distinct advantage over other Postal bidders, hence we suggest if you are not a member, that you sign up ASAP!

Some Sale 83 Auction Highlights and more...

Coin highlights include two large collections that are both PCGS graded, which ensures both the authenticity and the integrity of the coins (no cleaned silver in these collections!). The collections include a number of finest known and amongst the finest known examples right through the Pre Decimal and Decimal series. Highlights include a superb run of Florins including a 1914 MS 64+, 1914H MS 65 and the equal finest known, a 1921 MS 65+ the second highest graded, a 1923 MS 65+, 1924 MS 65 and a 1933 MS 64+ to name just few. Other coin highlights include one of the finest known 1925 Pennies, a Uniface "Pattern" or Trial 1937 Crown, a Type 6 Kookaburra Penny, a 1910 Specimen Silver set, an 1852 Adelaide Pound, and a gF/aVF 1930 Penny.

Banknote highlights include a £100 1924 Cerutti-Collins, along with two Pre Decimal Specimens: a 10 Shillings 1938 and a £1 1953. Other highlights include a £1 1918 in UNC, a pair of UNC £10 1940 Sheehan-McFarlane, and a rare 10/- Consecutive Starnote trio in UNC. The Banknote section also includes a 50 Pound London Bank and many other Pre Federation notes, Specimen notes including a \$1 Type II issue,

Starnotes, Misprints and a large selection of Decimal notes including many scarce first and last prefixes.

There is also a selection of Pre Decimal Proof Coins including a superb 1938 Penny, 1937 Crown, 1935 Shilling and Halfpenny and many more. Some key Mis-strikes are also a highlight, including a 1978 Mule Australia/Fiji 20 Cent, a 1977 Double Headed 50 Cent, a 20 Cent on a Nepal Rupee Blank, an MS 63 Mule Dollar and a 2 Cent struck on a 5 Cent blank. There also is a large collection of over 90 lots of British coins, comprising mostly Shillings, Halfcrowns and Crowns from 1653 onwards and with many in high grade, along with an excellent selection of World and Ancient Coins, Gold Coins including many scarce dates, Proclamation coins including a choice Johanna, Jewellery, Mint products, unreserved lots and more.

Once again this superb sale has something for every collector, and every budget!

Happy Collecting to all.

Viewing: - In our offices only: Monday 18th to Friday 22nd April 2016 by Appointment Only please.

Level 2, 20-22 Queensland Avenue, Broadbeach, Gold Coast, QLD.

Phone: (07) 55 380 300 or **Mobile:** 0412 722 043 (Business Hours Only)

Email: mail@iagauctions.com **Website:** www.iagauctions.com

Welcome to IAG's Sale 83!

Saturday 23rd April 2016 at 2pm AEDST.

**Live Auction: Sofitel Hotel Gold Coast
81 Surf Pde, Broadbeach QLD**

Important Auction Information:

Auction Day Viewing & Auction: Sofitel Hotel Gold Coast – Sorrento Room.

Viewing: Auction day Saturday 23rd 11am to 2pm. The Auction will commence at 2pm with Session 1, and will take approximately 4 hours to complete the whole auction. Session 2 will start with lot 441 after a short break.

Pre Auction Viewing: Monday 18th to Friday 22nd April by appointment, in our offices from 9-5pm, Level 2, 20-22 Queensland Avenue, Broadbeach, Gold Coast, QLD. Please call us on (07) 55 380300 for further details or appointments, or email us at mail@iagauctions.com

The Live Auction at the Sofitel will be held over 2 Sessions:

Session 1: Lots 1-440 2pm AEDST to approx 4.15pm AEDST

Session 2: Lots 441-820 4.30pm AEDST to 6.15pm AEDST

A Helpful Note on Estimates and Reserves:

ALL Estimates used in the LIVE Sales are meant to provide an accurate guide of what we expect the item to sell for. Reserves will generally be 10-15% below the lower estimate. Bids at less than 70% of the low estimate will not be accepted (excepting on lower priced and unreserved lots).

For those more familiar with our Online Postal Sales, think of these Estimates more as the starting bid price.

Explanation of Current Bids on the Website:

All Items in **Green** have currently met, or passed the Reserve price.

Lots that do not have bids, or that have not met reserve will not show anything.

All Bidders: Will be advised of successful bids only via email (for all online bidders) or a posted invoice.

All postal (fax/phone/post/via web submission) bidders please note: All non Online bids must be received by 5pm Friday 22nd April 2016. This includes bids submitted di-

rectly via the website bidding form submission page, fax, phone and post.

Web (online) bidding: Online members can place bids up until 12pm on Auction day Saturday 23rd April via the website (www.iagauctions.com). Online bids will close 2 hours before the Auction live bidding starts. All postal bids will then be collated to be used Live at the start of the Auction.

Online members can best bid via building a bidding "Watchlist". This is used to control, view and submit bids automatically through the website. This will show you your current successful/unsuccessful bids and prices (in relation to other postal bids) right up until all postal bidding closes 2 hours prior to the Live Auction commencing.

The "View All Lots with Bids" function will create a PDF where all current successful postal bids on every lot can be viewed prior to the commencement of the live sale. View your account in the "Accounts" section for an indicative check of your current winning status before the sale starts.

Credit Cards & Payment: All amounts are in Australian Dollars. Lots are processed upon clearance of funds. We reserve the right to hold new clients paying by credit card items for up to 30 days. MasterCard, Visa & Amex are accepted for payment. A 3% surcharge will be applied to Amex payments. All payments must be finalized within 14 days of Sale. To pay by credit card contact our office on: (07) 55 380 300 or email us at: mail@iagauctions.com

Direct Bank Payments/Postage: Please advise us if paying by electronic transfer to ensure that your payments get processed effectively. Make sure to include your name and invoice number in your payment. Please note that items will be dispatched three days after cleared payment has been confirmed. Where possible, all items will be posted on a Monday or Tuesday.

Bank: ANZ Broadbeach
Account: Paradise Coins Pty Ltd.
T/A International Auction Galleries
BSB: 014 513
Account No: 1027 43868

Postage and Insurance: Small items under \$200 - \$7.50 via normal mail, Small items between \$200 and \$1000 - \$12.50 via registered post, Items over \$1000 - \$17.50 via registered post person to person, Heavier items over 500 grams have an additional charge of \$2 per KG or part thereof. International post will be at cost but not insured. Bullion Gold items will not be posted, please contact us to make other arrangements. Items will not be insured unless requested. Insurance is charged at \$1 per \$100 upon request.

Happy Collecting to All

World Coins	05
Proclamation Coins	08
Australian Pre Decimal Coins I	10
Australian Pre Federation Banknotes	14
Superior Australian Pre Decimal Banknotes	15
Australian Pre Decimal Specimen Banknotes	23
British Coins	24
Australian Pre Decimal Starnotes	34
Australian Decimal Starnotes	35
Australian Decimal Specimen Banknotes	36
World Gold Coins	36
Australian Gold Coins	37
Modern Australian Bullion Coins	39
First Prefix Australian Banknotes	40
Last Prefix Australian Banknotes	41
Misprinted Banknotes	43
Australian And Related Coin Rarities	45
Australian Pre Decimal Coins II	48
Australian Pre Decimal Proof Coins	61
Unofficial Patterns, Restrikes & Forgeries	63
Internment Camps	63
Radar Serial Numbered Notes	64
Interesting Serial Numbered Banknotes	65
Solid Serial Numbered Banknotes	67
Australian Decimal Banknotes	68
Australian Decimal Coins	69
Mistruck Error Coins	71
Jewellery and Related	73
World Banknotes	75
Ancient Coins	75
Memorabilia	78
Australian Tokens	78
Royal Australian Mint Products	78
Miscellaneous Australian Coins	79
Australian Pre Decimal Banknotes	80
Miscellaneous / Unreserved Lots	81



- 1 **Austria Thaler 1821. Leopold. Toned, slight edge chip at top. *aEF***
\$320 - \$340

- 2 **Austria (Empire) 2 Gulden (1854). Franz Joseph I, A (Vienna). Imperial Wedding issue. A few rim marks, old tone. *gEF***
\$200 - \$220



- 3 **Austrian Netherlands 3 Florins 1790. Leopold II, Brussels. Old toned, and an attractive style. *gVF/aEF***
\$600 - \$650

- 4 **Canada Silver Dollars 1964 (5), 1965 (2), 1966, 1967 (3), 1970. Also Bermuda Crowns 1964 (8). (20 coins total). *VF-UNC***
\$220 - \$240



- 5 **China, Republic Silver Dollar N/D (1914). Yuan Shih-kai Founding of Republic. (2.8mm thickness). A few minor marks. Scarce. *EF***
\$1100 - \$1200



6 China Republic Silver Dollar 1922 (Year 11). Provincial Constitution, Hunan Province. Old tone with some underlying bloom. Rare. *gEF*

\$1700 - \$1800



7 China Republic Silver Dollar 1924. Tuan Chi-Jui. Old greenish tone with some underlying bloom. Rare. *gEF*

\$1100 - \$1200

8 Cocos Keeling Islands 25 Cent 1910. Scarce this grade. *UNC*

\$310 - \$320

9 Cuba 1 Peso 1938. ABC type Peso. *aUNC*

\$140 - \$150

10 El Salvador 1 Colon 1925. 400th Anniversary of San Salvador. Light tone with mint bloom. *UNC*

\$260 - \$280

11 French Indo-China 1 Piastre 1900, 1903, 1907, 1913, 1921. (5 coins total). *VF-EF*

\$70 - \$80

12 German East Africa 1 Rupie 1890. NGC graded MS 63. Light tone with soft bloom. *UNC/Ch.UNC*

\$240 - \$250



13 German New Guinea 1 Pfennig 1894A. Mint red. *Ch.UNC*

\$350 - \$400



14 German New Guinea 2 Mark 1894A. Toned. *aEF*

\$600 - \$650

15 Greece 5 Drachmai 1833A. Otto I. *gVF*

\$260 - \$280



16 Italian States 5 Lire 1848. Lombardy. Bright mint bloom, minor marks. *aUNC*

\$300 - \$320

17 Malta 30 Tari 1781. Emmanuel. Slightly porous, probably once cleaned. *VF*

\$240 - \$250

18 Malta 30 Tari 1798. Ferdinand I. Light tone. *VF*

\$250 - \$260

19 New Zealand Halfpenny 1955. PCGS graded MS 64 RB. Mint brown and red. Scarce this grade. *Ch.UNC*

\$180 - \$200



20 New Zealand Proof Penny 1949. NGC graded PF 65 BN. Even brown lustre. Only 10-20 minted. Rare. *FDC*

\$3400 - \$3500



21 New Zealand Threepence 1935. PCGS graded AU 58. Scarce. *aUNC*
\$700 - \$750



22 New Zealand Threepence 1942. One dot. NGC graded MS 63. *Ch.UNC*
\$600 - \$650

23 New Zealand Threepence 1956. No shoulder strap. NGC graded AU 58. *aUNC/UNC*
\$180 - \$200

24 New Zealand Sixpence 1942. NGC graded AU 58. *aUNC/UNC*
\$180 - \$200

25 New Zealand Shilling 1942. NGC graded MS 63. *Ch.UNC*
\$450 - \$500



26 New Zealand Shilling 1942. Broken back variety. NGC graded MS 62. Scarce. *UNC/Ch.UNC*
\$600 - \$650

27 New Zealand Shilling 1948. PCGS graded MS 64. *Ch.UNC/GEM*
\$250 - \$260



28 New Zealand Proof Shilling 1950. PCGS graded PR 64 CAM. Only 10-20 minted. Rare. *FDC*
\$5000 - \$5500



29 New Zealand Proof Shilling 1955. NGC graded PF 66 CAMEO. Lovely cameo proof. Only 10-20 minted. The finest known and very rare. *FDC*
\$5500 - \$6000



30 New Zealand Florin 1936. NGC graded AU 58. Scarce. *aUNC/UNC*
\$1000 - \$1100



31 New Zealand Florin 1940. NGC graded MS 63. Bright bloom. *Ch.UNC*
\$800 - \$850

32 New Zealand Florin 1944. PCGS graded AU 55. Toned. *gEF/aUNC*
\$180 - \$200



33 New Zealand Halfcrown 1944. NGC graded MS 63. *Ch.UNC*
\$600 - \$650

34 Nicaragua 1 Cordoba 1912. *aEF*
\$140 - \$150



35 Russia Rouble 1834. Nicholas I. Alexander I monument Reverse. Old gunmetal tone. Scarce. *VF*
\$600 - \$650



36 Russia Rouble Alexander II 1859. Light tone with a few old minor marks. Rare. *UNC*
\$1400 - \$1500

37 South Africa 5 Shillings 1892. Double shaft variety. Toned, scarce. *VF*
\$260 - \$280

38 South Africa 5 Shillings 1892. Double shaft variety. Toned, with some bloom. Scarce. *gVF*
\$360 - \$380



39 Spain 4 Reales N/D Philip II (1556-1598). Seville mint. Usual uneven strike. *VF*
\$200 - \$220

40 Spain 100 Pesetas 1966. (7), Russia 30 Kropek? 1963. Commemorative. Philippines Peso 1903, South Africa 5 Shillings 1943, 50C 1962 (2). (11 coins total). *VF-UNC*
\$110 - \$120

41 Switzerland 5 Franc 1879. Basel Festival. NGC graded MS64. Light tone. *Ch.UNC*
\$240 - \$250

42 USA 1 Cent 1890. NGC graded MS 63 RB. Light scratches on cheek on Obverse. Mint red and brown. *UNC/Ch.UNC*
\$200 - \$220

43 USA Dollar 1847 Seated Liberty. No motto. Toned. *gVF/aEF*
\$280 - \$300



44 USA Morgan Dollar 1885 CC. Scarce. *aVF*
\$600 - \$650

Australian Proclamation Coins

45 Bolivia 4 Reales 1799 PTS PP. Carlos III. Toned. *VF*
\$140 - \$150



46 Bolivia 8 Reales 1808 PTS PJ. Charles III wide date. Light tone with some bloom. Scarce. *gEF/aUNC*

\$400 - \$420

47 Bolivia 8 Reales 1816 PTS PJ. Ferdinand VII. Light tone with some bloom. *aEF*

\$180 - \$200



48 Brazil Johanna 1732M. Joannes V. NGC graded AU 55. Sharply struck with an Obverse scratch. Ex the RLM collection. Very scarce. *aUNC*

\$7800 - \$8000

49 GB Cartwheel Twopence 1797. George III. Dark brown with the slightest hints of red in the devices. *gEF*

\$280 - \$300



50 Great Britain gold Spade Guinea 1787. *aUNC*

\$800 - \$850

51 India Quarter Pagoda c1808. Madras Presidency. Large A type. Toned. *VF*

\$150 - \$160



52 India Half Pagoda c1808. Madras Presidency. Toned. Scarce. *aVF*

\$700 - \$750



53 India Gold Star Pagoda. Madras Presidency 1740-1807. A little off centre. Scarce. *gVF*

\$240 - \$250

54 Mexico 1 Real 1800FM. Carlos III. Dark tone. *VF*

\$40 - \$50



55 Mexico Pillar Dollar 8 Reales 1752MF. Ferdinand VI. Light tone. Scarce. *aEF*

\$350 - \$360



56 Mexico Pillar Dollar 8 Reales 1753MF. Ferdinand VI. 12 assorted and clear chopmarks. An interesting and scarce example. *gVF*

\$300 - \$350

57 Netherlands East Indies Silver Rupee 1808Z (Indonesia). Scarce. *gVF/aEF*

\$140 - \$150

58 Netherlands 1 Gulden 1794. Utrecht. Old tone. *aUNC*

\$180 - \$200



59 Netherlands Silver Ducat 1800. Utrecht.
Light tone with much mint bloom. *aUNC*
\$350 - \$360



64 1930. Mostly brown with some minor traces of mint red. *aUNC*
\$240 - \$250



60 Netherlands Gold Ducat 1778. *VF*
\$340 - \$350

65 1940. Mostly mint red. *UNC*
\$70 - \$80



61 Portugal gold Johanna 1790R. Maria I. *EF*
\$1200 - \$1400

66 1952A. PCGS graded MS 63 RB. Mint brown and red. *UNC/Ch.UNC*
\$70 - \$80

67 1954. PCGS graded MS 63 RB. Patchy tone. Mint red and brown. *Ch.UNC*
\$40 - \$50

68 1962Y. PCGS graded MS 64 RB. Full mint red. *Ch.UNC/GEM*
\$30 - \$40



62 Spain gold 2 Escudos 1776PJ. Carlos III, Madrid mint. *gVF*
\$350 - \$360

Penny

69 1920 Plain. 6 Pearls. *aVF*
\$160 - \$180

70 1925. Key date. A small bit of silvering? on both sides. *gFINE*
\$130 - \$140

71 1925. Key date. *VF*
\$180 - \$200

72 1947. Red and brown. *UNC*
\$30 - \$40

73 1948. Red and brown. *UNC*
\$30 - \$40

74 1949. Red and brown. *UNC*
\$30 - \$40

75 1950. Red and brown. *UNC*
\$30 - \$40

Australian Pre Decimal Coins I

Halfpenny



63 1919. Mint brown and red. *UNC*
\$180 - \$200

76 1951PL. PCGS graded MS 64 RD. Mint red.
Ch.UNC/GEM
\$70 - \$80



77 1952. PCGS graded MS 64 RB. Mint red.
Ch.UNC/GEM
\$150 - \$160

78 1959P. PCGS graded MS 64 RB. Mint red
and brown. Ch.UNC/GEM
\$140 - \$150

79 1964. PCGS graded MS 64 RD. Full mint
red. Ch.UNC/GEM
\$30 - \$40

84 1938. PCGS graded MS 64. Dark steely
peripheral tone. Ch.UNC/GEM
\$110 - \$120

85 1942D. PCGS graded MS 64. Equal second
highest graded. Rare this grade. Ch.UNC/
GEM
\$50 - \$60

86 1942S. NGC graded MS 64. Ex Benchmark
collection. Mint bloom. Ch.UNC/GEM
\$80 - \$90

87 1943D. NGC graded MS 66. Mint bloom.
GEM UNC
\$80 - \$90

88 1943D. PCGS graded MS 65. Mint bloom.
GEM UNC
\$110 - \$120

Threepence



80 1910. PCGS graded MS 64. Bright mint
bloom. Ch.UNC/GEM
\$270 - \$280



81 1919. PCGS graded MS 62. A few Obverse
marks. UNC/Ch.UNC
\$300 - \$320

82 1927. PCGS graded MS 62. Light peripheral
tone with some bloom. A few minor marks.
UNC/Ch.UNC
\$200 - \$220

83 1936. PCGS graded MS 64+. Light tone.
Ch.UNC/GEM
\$210 - \$220

89 1944. PCGS graded MS 65. Full bright
bloom. GEM UNC
\$70 - \$80

90 1944S. PCGS graded MS 65. Full bright
bloom. GEM UNC
\$70 - \$80

91 1952. PCGS graded MS 65. Toned on
Reverse. GEM UNC
\$140 - \$150

92 1953. PCGS graded MS 62. Light tone on
Reverse. UNC/Ch.UNC
\$60 - \$70

93 1954. PCGS graded MS 62. Light golden
tone. Ch.UNC/GEM
\$70 - \$80

94 1957. PCGS graded MS 66. Equal second
highest graded. Rare this grade.
GEM UNC
\$50 - \$60

95 1964. PCGS graded MS 66. GEM UNC
\$30 - \$40

Sixpence

96 1911 VF

\$70 - \$80



97 1928. PCGS graded MS 62. A few marks.
UNC/Ch.UNC

\$260 - \$280

98 1943D. PCGS graded MS 64. Toned on
Obverse. *Ch.UNC/GEM*

\$90 - \$100

99 1946. PCGS graded MS 64. Soft bloom.
Ch.UNC/GEM

\$90 - \$100



100 1952. A few minor marks and a little flat
on feathers. *UNC*

\$260 - \$280

Shilling



101 1916. PCGS graded MS 62. Some light
tone and bloom with a few marks.
UNC/Ch.UNC

\$280 - \$300

102 1917. Light tone with some bloom.
aUNC

\$110 - \$120



103 1921 Star. Light tone. *aVF*

\$80 - \$90



104 1933. Key date. Obverse marks. *gFINE*

\$80 - \$90

105 1936 *UNC*

\$160 - \$180



106 1938. PCGS graded MS 64. Light tone.
Ch.UNC/GEM

\$180 - \$200

107 1946. PCGS graded MS 64. Light tone.
Ch.UNC/GEM

\$120 - \$140

108 1946. Double dot. Mark on head.
aU/UNC

\$140 - \$150

109 1952. PCGS graded MS 64. Soft old tone
and some mint bloom. *Ch.UNC/GEM*

\$50 - \$60

110 1961. PCGS graded MS 66. Mint bloom.
GEM UNC

\$40 - \$50

111 1962. PCGS graded MS 66. Mint bloom.
GEM UNC

\$40 - \$50

Florin

112 1914. Light tone. *gF/aVF*
\$30 - \$40

113 1914H. Light tone. *FINE*
\$30 - \$40



114 1927. Mint bloom. *aUNC*
\$240 - \$250

115 1927 Canberra. Light tone. *aUNC*
\$30 - \$40

116 1931. Light tone. *EF*
\$40 - \$50

117 1932. Key date. *GOOD/VG*
\$140 - \$150

118 1932. Key date. *GOOD/VG*
\$140 - \$150



119 1932. Key date. *gF/aVF*
\$280 - \$300

120 1934. Light tone with bloom.
aEF/EF
\$40 - \$50

121 1935. Light tone. *aEF*
\$40 - \$50

122 1936. struck up with some marks.
UNC
\$180 - \$200



123 1939. Key date. *aUNC*
\$250 - \$260

124 1944S. PCGS graded MS 64.
Ch.UNC/GEM
\$80 - \$90

125 1947. PCGS graded MS 64.
Ch.UNC/GEM
\$140 - \$150

126 1951 Jubilee. Light tone.
UNC/Ch.UNC
\$30 - \$35

127 1951 Jubilee. PCGS graded MS 63.
Ch.UNC
\$40 - \$50

128 1958. PCGS graded MS 64. Light tone.
Ch.UNC/GEM
\$110 - \$120

Crown



129 1937. PCGS graded MS 62. Soft old tone
and some mint bloom. *UNC/Ch.UNC*
\$110 - \$120

130 1938. Light tone. *VF*
\$100 - \$110

131 1938. Light tone. *VF*
\$100 - \$110

Australian Pre Federation Banknotes

- 132 The Leichhardt District Queensland, Sydney 13-5-1871. Sight Note No 22 for One Pound, payable to B Hoban on account of Walloon Station wages. Paid by Australian Joint Stock Bank, Rockhampton, duty stamp on front and back. Tear at top. Very scarce. *FINE*

\$250 - \$260

- 133 Bank of Australasia, London office, Second of Exchange Wesleyan Missionary Society sight note, Sydney 9-7-1844 for 300 Pounds (No 10). Fully signed, overwritten 'Accepted 11th June 1844, Payable at Smith Payne Smiths Bankers for Rev Johnscott Self', with Sydney and London bank stamps, signed on back by Bank of Australasia Manager and Secretary. Pinholes. Scarce. *gVF*

\$200 - \$220



- 134 Colonial Third of Exchange, Commissariat Office Sydney 6-10-1836 Number 4733. On watermarked paper marked M Snelgrove 1831, for 100 Pounds. Payable to G Butler being for the amount allowed him as Surgeon Superintendent of the Convict ship Roslin Castle to provide him passage (back) to England. Signed by Robert Espie. Pinhole. Rare early Colonial bill of exchange. *aEF*

\$1100 - \$1200

- 135 One Pound Western Australian Bank, Perth WA Jan 1844. In Downies presentation folder/book. *aUNC*

\$350 - \$400



- 136 One Pound Bank of Van Diemens Land Ltd, Hobart, Tas 1-7-1881. Unissued remainder. Folds, a number of small holes but with good colour and body. Scarce. *VF*

\$1800 - \$2000



- 137 One Pound Bank of Van Diemens Land full color double sided Specimen. Hobart 1-7-1881 (MVR 4). A couple tiny edge nicks and very slight water stain. Very rare. *EF*

\$2100 - \$2200



- 138 One Pound The Commercial Bank of Australia Ltd double sided colour Specimen, Melbourne--18-- (MVR 1). Chinese script overprint type. With original tag as sold for \$40,000. Rare. *aUNC*

\$3200 - \$3400



- 139 One Pound The City Bank of Sydney double sided colour Specimen, Sydney 1-1-1900 (MVR 2d). Light stain on top left. Rare. *aUNC*

\$3000 - \$3200



- 140 Five Pound Bank of New South Wales double sided colour Specimen Melbourne, Vic 18-- (MVR 7E1). Punched C.Skipper & East. With old ticket as sold for \$25,000. Scarce. *aUNC*

\$2300 - \$2400



- 143 Twenty Pound Bank of New South Wales double sided colour Specimen, --19-- (MVR 7f). Punched Specimen, C. Skipper and East. No domicile. Light paper tone. Rare higher denomination issue. *gEF*

\$3900 - \$4000



- 141 Five Pounds Bank of New South Wales, Sydney NSW. Stamped 1st July 09 (1909). Imprint Charles Skipper and East, London (MVR 7f). Fully signed and issued, with cancellation punch holes, good colour and body. Extremely rare type. *VF*

\$4000 - \$4500



- 144 Fifty Pounds London Bank of Australia Limited full colour double sided Specimen. Melbourne 1-1 1900. (MVR 2g). Extremely rare, especially in this high denomination. *aUNC*

\$3800 - \$4000



- 142 Twenty Pounds Union Bank of Australia Limited full colour double sided Specimen. Dated 1st March 1905. Imprint Waterlow and Sons Ld, London and stamped Specimen, now due in red twice with punch holes. (MVR 3). Probably mounted and removed with some paper damage to the back, but lovely classical style and very rare. *gVF*

\$2100 - \$2200

Superior Australian Pre Decimal Banknotes

Ten Shillings



- 145 1915 Collins-Allen (R 2dF). Some old folds but still a presentable example. *aVF*

\$3000 - \$3500



146 1918 Cerutti-Collins (R 3a). Medium seriffed serial number type. Ex the Nicholson collection and IAG Sale 73 March 2011 (sold for \$58,250). Extremely rare in both this condition and for this type with the smaller serrified serial numbers being the one missing from most collections or found in low grade. A good even note without substantial wear. Extremely rare, with approximately a dozen notes known, with this example the equal finest known. *gVF*

\$18000 - \$20000

147 1918 Cerutti-Collins N/Z (R 3bL). Last prefix. Crinkly paper, a little dirty. *FINE*

\$700 - \$800

148 1918 Cerutti-Collins (R 3b). Old folds but nice original paper with good colour and crispness. *VF*

\$1800 - \$2000

149 1926 Kell-Collins (R 5). Small edge tears & old folds. *FINE*

\$480 - \$500

150 1928 Riddle-Heathershaw (R 7). Slightly crinkled paper, light stain on back. *aEF*

\$1050 - \$1100



153 1928 Riddle-Heathershaw (R 7). Fresh original paper, with some light handling and bends. *aU/UNC*

\$4000 - \$4500

154 1933 Riddle-Sheehan (R 8a). Thick signature type. Some paper spotting/toner, flat. A decent type note of this scarce issue. *FINE*

\$1100 - \$1200



151 1928 Riddle-Heathershaw (R 7). Crisp paper, with a few light bends and handling. *gEF*

\$2300 - \$2400

155 1933 Riddle-Sheehan (R 8b). Thin signature type. Flattened. *FINE*

\$350 - \$400

152 1928 Riddle-Heathershaw (R 7). Crisp, with some light handling and bends. With original tag as sold for \$19,500. *aUNC*

\$2800 - \$3000

156 1934 Riddle-Sheehan (R 10). Red imprint type. Crisp paper but with multiple light, old bends and folds. *gVF*

\$1100 - \$1200

157 1934 Riddle-Sheehan (R 10). Red overprint type. *gEF/aUNC*

\$2400 - \$2500



158 1934 Riddle-Sheehan (R 10). Red imprint type. Full original waxy paper with some light, edge and corner flicks. Scarce. *aUNC/UNC*

\$2800 - \$3000

159 1939 Sheehan-McFarlane (R 12). Crisp, with light bends. *aUNC*

\$800 - \$900



160 1939 Sheehan-McFarlane (R 12). Consecutive pair. Nice crisp notes. *UNC*

\$2500 - \$2600

161 1942 Armitage-McFarlane (R 13). Consecutive pair. Centre bend. *aUNC*

\$500 - \$550

162 1949 Coombs-Watt (R 14). *UNC*

\$480 - \$500

163 1952 Coombs-Wilson (R 15). *UNC*

\$480 - \$500

164 1952 Coombs-Wilson (R 15). PMG graded 64 EPQ. *UNC*

\$500 - \$550



165 1961 Coombs-Wilson (R 17). Consecutive run of 10. The first 10 notes from a run of 30. *UNC*

\$1100 - \$1200

166 1961 Coombs-Wilson (R 17). Consecutive run of 10. Consecutive to previous from run of 30. *UNC*

\$1100 - \$1200

167 1961 Coombs-Wilson (R 17). Consecutive run of 10. Consecutive to previous, the final 10 notes in the run. *UNC*

\$1100 - \$1200

One Pound



168 1913 Collins-Allen (R 18b). Blue serials type. Old folds and some dirt but a good, no problems example. Scarce. *aFINE*

\$1600 - \$1800

169 1913 Collins-Allen (R 18eF). Small edge tear at top left, a little dirty. Scarce. *FINE*

\$1500 - \$1600



170 1918 Cerutti-Collins (R 21). Different seriffed 1 (straight top of 1 and curved top of 1) type. Rare as such. *gVF/aEF*

\$2900 - \$3000

Postal / Online Bidders:

Postal / Fax bids finish at
5pm AEST Friday 22nd April 2016.

**Online postal bidding finishes at
12pm AEST Saturday 23rd April!**



171 1918 Cerutti-Collins (R 21). Crisp and flat note in virtually unmarked condition with no real signs of handling, making this one of only a few such examples of this issue in this grade. Good colour and paper, with sharp corners. Extremely rare in this grade, and the equal finest known. *UNC*

\$30000 - \$32000

172 1923 Miller-Collins (R 23a). Imprint type. Pinholes, crisp with folds. *FINE*

\$580 - \$600

173 1923 Miller-Collins (R 23b). No imprint. Flattened of folds still visible. *aVF*

\$800 - \$850



175 1926 Kell-Collins (R 24). Crisp and fresh paper, with a slight trace of a bundle ripple as straight out of a bundle. Rare this nice. *UNC*

\$7500 - \$8000



174 1926 Kell-Collins (R 24). Crisp with some very light handling. With ticket as sold previously for \$38,000. Rare this grade. *UNC*

\$4400 - \$4500

176 1927 Kell-Heathershaw (R 25). Flat, traces of folds. Scarce. *gEF/aUNC*

\$3000 - \$3500



177 1927 Kell-Heathershaw (R 25). Consecutive trio. Crisp paper, with some light traces of handling and some bends. The middle note of the trio has had a small edge split repair on top edge. Ex IAG Sale 61 January 2005. Rare in this grade and the only known consecutive run of three. *aUNC*
\$17000 - \$18000

178 1927 Riddle-Heathershaw (R 26). *gVF*
\$300 - \$350



179 1927 Riddle-Heathershaw (R 26). Consecutive pair. Crisp, with just a hint of a roll fold and scarce. *UNC*
\$5250 - \$5500

180 1932 Riddle-Sheehan (R 27b). Thin signature. Cleaned. *gF/aVF*
\$300 - \$320

181 1932 Riddle-Sheehan (R 27b). Thin signature. Crisp, light folds. *aVF*
\$750 - \$800

182 1933 Riddle-Sheehan (R 28). Crisp, slightly wavy with light handling. *aUNC*
\$700 - \$750



183 1938 Sheehan-McFarlane (R 29). Consecutive trio. Light traces of pay packet bends. *UNC*
\$2100 - \$2200

184 1942 Armitage-McFarlane (R 30a). Little wavy. *UNC*
\$260 - \$280

185 1949 Coombs-Watt (R 31). Consecutive run of 5. Lovely original paper with light pay packet bend and slight handling. Part of an original run of 10. (5 notes total). *aUNC*
\$700 - \$800

186 1949 Coombs-Watt (R 31). Consecutive run of 5. Lovely original paper with light pay packet bend and slight handling. Part of an original run of 10, and consecutive to the previous lot. (5 notes total). *aUNC*
\$700 - \$800

187 1952 Coombs-Wilson (R 32). Flattened. *aUNC/UNC*
\$210 - \$220

188 1953 Coombs-Wilson (R 33). *UNC*
\$140 - \$150

Five Pound



189 1914 Collins-Allen (R 36b). A little dirty looking, but a whole type note. Scarce. *VG*
\$2400 - \$2500



190 1914 Collins-Allen (R 36bL). Fresh paper with good colour, trace of a centre fold and flicks with some light handling. Very scarce. *gVF*
\$7800 - \$8000



191 1927 Riddle-Heathershaw (R 42). Crisp fresh paper, with a light centre bend. A great type note. *UNC*
\$7250 - \$7500



192 1933 Riddle-Sheehan (R 44a). Pink face of king type. 4 pinholes top left, else flat and without any real wear. *UNC*
\$5800 - \$6000



193 1933 Riddle-Sheehan R/10 (R 44bF). White face of king. First prefix. Good paper with many old folds. *gFINE*
\$800 - \$900

194 1933 Riddle-Sheehan (R 44b). Flattened, folds. *gVF*
\$900 - \$950

195 1939 Sheehan-McFarlane (R 45). Flattened. *gFINE/aVF*
\$300 - \$320



196 1939 Sheehan-McFarlane (R 45). Consecutive pair. Light bend. Scarce. *aUNC*
\$3400 - \$3500

197 1941 Armitage-McFarlane (R 46). Crisp, with centre bend and flick. *aUNC*
\$400 - \$450

198 1952 Coombs-Wilson Reserve (R 48). Light handling, but still crisp. *aUNC/UNC*
\$650 - \$700

199 1954 Coombs-Wilson (R 49). Trace of bends. *aUNC*
\$425 - \$450

200 1954 Coombs-Wilson (R 50). Consecutive pair. Flattened. *aU/UNC*
\$800 - \$900

Ten Pound



201 1925 Kell-Collins (R 54). Cleaned with some cente fold split repairs, trimmed along bottom edge. Scarce. *gF/aVF*
\$2900 - \$3000



202 1932 Riddle-Sheehan (R 56). Flat with a couple of small pinholes. Ex Nobles Sale 85 (July 2007). A well priced type example of this rare George V gold bearing issue. *aVF/VF* \$17000 - \$18000



203 1934 Riddle-Sheehan (R 57). Crisp original paper with numerous very light folds and some handling with some original waxy sheen. A lovely type note. *gVF/aEF* \$2200 - \$2400



205 1940 Sheehan-McFarlane (R 58). Consecutive pair. Trace of a light centre bend and flick barely visible. Only a few pairs of this scarce issue known, and rare as such, especially in this grade. *aUNC/UNC* \$8500 - \$9000

204 1940 Sheehan-McFarlane V/3 (R 58F). *gVF* \$800 - \$850



206 1940 Sheehan-McFarlane (R 58). Consecutive pair. With originally ticket as sold for \$70,000. Some light handling and a trace of a flat centre bend. Rare, especially as a pair. *UNC* \$14000 - \$15000



207 1943 Armitage-McFarlane (R 59). Crisp and original, a few light flicks and handling. *UNC*

\$1800 - \$2000

208 1952 Coombs-Wilson (R 61). Cleaned, small edge repair. *aVF*

\$350 - \$360

209 1952 Coombs-Wilson V/24 (R 61L). Slight stain on back, light folds. *aEF*

\$1300 - \$1400

210 1954 Coombs-Wilson (R 62). Light handling. *aUNC/UNC*

\$550 - \$600

211 1960 Coombs-Wilson (R 63). Centre fold. *aUNC*

\$360 - \$380



212 One Hundred Pound 1924 Cerutti-Collins (R 69b). Pinhole on both side edges and in one corner. In ink on back bottom margin N.W.O. Gardner I, Tara Ave Toorak, possibly denoting that this note was used in the purchase transaction of this property (and likely pinned to paperwork). Lovely attractive original colour and fully crisp paper with sheen. Ex Nobles Sale 66 March 2001. Very rare in this condition and one of the finest known. *gVF*

\$100000 - \$110000



213 Ten Shillings 1938 Sheehan-McFarlane (R 12). Type H Specimen. Crossed in black both sides with SPECIMEN perforated, from an issued note. Extremely rare George VI issue, with only a few examples of this type known. *UNC*

\$30000 - \$32000



214 1953 Coombs-Wilson Type 1. (R 33). Crossed in black with SPECIMEN perforated. Low issued serial number and First prefix HA 00 000006. With original tag as sold for \$300,000. Extremely rare. *UNC*

\$28000 - \$30000

Shilling



215 Shilling Charles II 1663 (S.3371). Lightly toned. *gVF/aEF*

\$750 - \$800



216 Shilling Charles II 1666 (S.3373). Elephant below bust. Lightly toned. Scarce. *gFINE*

\$1300 - \$1400



217 Shilling Charles II 1674 (S.3377). Missing 4 type. Toned. Rare. *VF*

\$3800 - \$4000



218 Shilling Charles II 1684 (S.3381). Large bust type. Dark old tone. *gEF*

\$1400 - \$1500



219 Shilling William III 1696 (S.3497). Toned. *gVF/aEF*

\$480 - \$500



220 Shilling William III 1696 (S.3499). C mintmark. Old tone. *VF*

\$400 - \$420



221 Shilling William III 1696 (S.3502). Y mintmark. Lightly toned. *aVF*

\$280 - \$300



222 Shilling William III 1697 (S.3506). B mintmark. Light tone. *aVF*

\$480 - \$500

223 Shilling William III 1697 (S.3513). C mintmark. Light slightly mottled tone. *aVF*

\$480 - \$500



224 Shilling William III 1699 (S.3515). Old gunmetal tone, slight mark on face. Scarce. *aEF*
\$1400 - \$1500



228 Shilling Anne 1705 (S.3589). Lightly toned. *gVF*
\$600 - \$650



225 Shilling William III 1700 (S.3516). Nice old tone. Scarce. *gEF*
\$1750 - \$1800

229 Shilling Anne 1708 (S.3609). Toned. *gFINE*
\$280 - \$300



230 Shilling Anne 1708 (S.3611). Toned. *gVF*
\$625 - \$650



226 Shilling Anne 1702 (S.3584). Old gunmetal and blue tone. Scarce. *EF*
\$1400 - \$1500



231 Shilling Anne 1708 (S.3614). Toned. *EF*
\$900 - \$1000



227 Shilling Anne 1703 (S.3586). *gVF/aEF*
\$600 - \$650



232 Shilling Anne 1711 (S.3618). Toned. *aEF*
\$425 - \$450



233 Shilling George I 1715 (S.3645). Roses.
EF

\$600 - \$650



237 Shilling George II 1728 (S.3700). Young DR
bust, plain angles. Light tone with lustre.
gVF/aEF

\$600 - \$650



234 Shilling George I 1720 (S.3646). Bright
bloom. *EF*

\$600 - \$650



238 Shilling George II 1731 (S.3698). Young
bust, small letters. Roses & plumes in
angles. Light tone. *gVF/aEF*

\$525 - \$550



235 Shilling George I 1723 SSC in angles
(S.3648). Old tone. *aEF*

\$380 - \$400



240 Shilling George II 1745 (S.3703). Old PR
bust, Lima below. Deep gunmetal tone.
aUNC

\$850 - \$900



236 Shilling George I 1723 SSC in angles
(S.3647). Light tone with mint bloom.
gEF/aUNC

\$600 - \$650



241 Shilling George II 1758 (S.3704). Old
reddish tone. *gEF/aUNC*

\$425 - \$450

242 Shilling George III 1787 (S.3746). Old tone. *gEF*

\$190 - \$200



246 Shilling George IV 1826 (S.3812). Cleaned of toning. *aUNC*

\$290 - \$300

247 Shilling Victoria 1839 (S.3904-2). Light tone. *gEF*

\$280 - \$300



243 Shilling George III 1819 (S.3790). Light tone. *UNC*

\$210 - \$220



248 Shilling Victoria 1839 (S.3902). Gunmetal tone. *aUNC*

\$470 - \$480



244 Shilling George IV 1821 (S.3810). Some lustre. *gEF*

\$410 - \$420

249 Shilling Victoria 1864 (S.3905). Milled edge. Old reddish tone. *UNC*

\$400 - \$420

245 Shilling George IV 1824 (S.3811). Dark old tone. *aUNC/UNC*

\$350 - \$360



250 Proof Shilling Victoria 1867 (S.3906). Type 5A, Milled edge. Light old tone with a few minor surface marks. *aFDC/FDC*

\$3900 - \$4000



251 Shilling Victoria 1870 (S.3906A). Toned. *aUNC/UNC*

\$320 - \$340

252 Shilling Victoria 1891 (S.3927). Some Obverse marks. *aUNC*

\$130 - \$140

Half Crown



253 Half Crown Commonwealth 1653 (S.3217).
A few adjustment marks, old tone.
VF

\$700 - \$750



257 Half Crown Charles II 1680 (S.3367-5).
Toned, porous surfaces. *aVF*

\$950 - \$1000

254 Half Crown Charles II 1666/4 (S.3363).
Worn, but details visible. *GOOD*

\$350 - \$400



258 Half Crown Charles II 1684/3 (S.3367-6).
Light tone. *gFINE/aVF*

\$700 - \$750



255 Half Crown Charles II 1669 (S.3365-3).
Lightly toned, digs. *aVF*

\$900 - \$950



259 Half Crown James II 1688 (S.3409). Nice
old tone. *gVF/aEF*

\$1200 - \$1300



256 Half Crown Charles II 1669/4 (S.3365-3).
Toned. *gFINE/aVF*

\$900 - \$950



260 Half Crown William & Mary 1693 (S.3436). Inverted 3. Toned. *aEF*

\$1750 - \$1800



261 Half Crown William III 1696 (S.3475). Light tone. *aEF*

\$1100 - \$1200



266 Half Crown William III 1696 (S.3482). B mintmark. Light tone. *aVF*

\$550 - \$600



262 Half Crown William III 1696 (S.3477). C mintmark. Old gunmetal tone. *aVF*

\$500 - \$550



267 Half Crown William III 1696 (S.3486). Y mintmark. Old tone. *gVF*

\$700 - \$750



263 Half Crown William III 1696 (S.3478). E mintmark. Old tone. *aVF*

\$550 - \$600



268 Half Crown William III 1697 (S.3487). Toned. *VF*

\$550 - \$600



264 Half Crown William III 1696 (S.3480). Y mintmark. Obverse scratches and pitting. *gF/aVF*

\$650 - \$700



269 Half Crown William III 1697 (S.3488). B mintmark. Light tone. Reverse scratches. *VF*

\$500 - \$550



265 Half Crown William III 1696 (S.3481). Nice old tone. *VF*

\$550 - \$600

270 Half Crown William III 1697/6 (S.3489). C mintmark. Light tone, scratches. *VG/aFINE*

\$280 - \$300



271 Half Crown William III 1697 (S.3491-2). N mintmark. Some mottled tone. Scarce. *gVF/aEF*

\$2000 - \$2200



272 Half Crown William III 1697 (S.3492). Light gunmetal tone. *gVF*

\$580 - \$600

273 Half Crown William III 1698 (S.3494-2). Lightly toned, old scratches and gouges. *VG/aFINE*

\$300 - \$350



276 Half Crown Anne 1705 (S.3581). Light tone, a few old scratches. Scarce. *aEF*

\$2100 - \$2200

277 Half Crown Anne 1706 (S.3582). *gFINE/aVF*

\$310 - \$320



274 Half Crown William III 1701 (S.3496). Old tone. *VF*

\$1300 - \$1400



278 Half Crown Anne 1708 (S.3604). Nice old tone with a few minor Obverse marks. *EF*

\$1400 - \$1500



275 Half Crown Anne 1703 (S.3579). Tertio. Light tone. *FINE*

\$1000 - \$1100



279 Half Crown Anne 1708 (S.3605). Toned. *aVF*

\$480 - \$500



280 Half Crown Anne 1708 (S.3606). Plumes in angles. Old tone. *VF*

\$600 - \$650



281 Half Crown Anne 1712 (S.3607). Roses & plumes in angles. Old tone, slight dig on bust. *aVF*

\$480 - \$500



282 Half Crown George I 1723 SSC in angles (S.3643). Nice old deep gunmetal tone. Very scarce. *aEF/EF*

\$2300 - \$2400



283 Half Crown George II 1739 (S.3693). Deep old red and blue tone. *EF*

\$1300 - \$1400



285 Half Crown George III 1816 (S.3788). Light tone with mint bloom. *aUNC*

\$370 - \$380

286 Half Crown George IV 1821 (S.3807). Some bright bloom. *gEF/aUNC*

\$425 - \$450



284 Half Crown George II 1746 (S.3695A). Nice old gunmetal and blue tone. *EF*

\$700 - \$750



287 Half Crown George IV 1826 (S.3809). Bright bloom. *aUNC*

\$850 - \$900



288 Half Crown William IV 1834 (S.3834).
Cleaned of tone with light surface marks.
aUNC

\$450 - \$460

289 Half Crown Victoria 1901 (S.3938). Some
lustre. *aUNC*

\$150 - \$160

Crown



290 Crown Charles II 1666 (S.3356). Elephant
below bust. Toned. Scarce. *aVF*

\$1700 - \$1800



292 Crown Charles II 1682/1 (S.3359).
Gunmetal tone with some old scratches.
aVF

\$1200 - \$1250



291 Crown Charles II 1671 (S.3357). Nice
gunmetal tone. Scarce. *gVF/aEF*

\$2100 - \$2200



293 Crown William III 1696 (S.3470). Attractive pinkish tone *EF*

\$2400 - \$2500



294 Crown Anne 1713 (S.3603). Light tone with some lustre. *aEF*

\$1750 - \$1800



295 Crown George I 1726 (S.3639A). Nice old gunmetal tone. Scarce. *aEF*

\$3900 - \$4000

Guinea

296 Crown George III 1818 (S.3787). Light old tone with some lustre. *aUNC*

\$600 - \$650



297 Crown Victoria 1900 (S.3937). Bright bloom. *gEF*

\$425 - \$450

298 Crown George V 1929. *gVF*

\$260 - \$280

Half Guinea

299 Half Guinea George II 1760 (S.3685). *gFINE*

\$280 - \$300

300 Half Guinea George III 1798/7 (S.3735). *aVF*

\$320 - \$340



301 Guinea George II 1760 (S.3680). Worn. *gFINE*

\$400 - \$420

Half Sovereign



302 Half Sovereign George IV 1824 (S.3803). *VF*

\$380 - \$400

303 Half Sovereign Victoria 1869 (S.3860). Young Head. *EF*

\$220 - \$240

304 Half Sovereign Victoria 1893 (S.3878). Veiled Head. *EF*

\$180 - \$200

Sovereign



- 305 Sovereign George III 1820 (S.3785C). Type B. *gFINE/aVF*

\$440 - \$450

- 306 Sovereign William IV 1835/3 (S.3829B). *gFINE*

\$440 - \$450

- 307 Sovereign Victoria 1861 (S.3852D). Young Head. *gFINE*

\$360 - \$380

- 308 Sovereign Edward VII 1904. *FINE*

\$330 - \$340

Australian Pre Decimal Starnotes

Ten Shillings



- 309 1954 Coombs-Wilson (R 16s). Commonwealth issue. Crisp, slightly wavy paper with two minute pinholes. Rare in this grade, with only a few examples known. *UNC*

\$5800 - \$6000

- 310 1961 Coombs-Wilson (R 17s). Light bends. *aUNC*

\$2800 - \$3000



- 311 1961 Coombs-Wilson (R 17s). Consecutive trio. Lovely fresh and original notes, and extremely rare in this grade as a trio. *UNC*

\$28000 - \$30000

One Pound

- 312 1949 Coombs-Watt (R 31s). Multiple pinholes. worn, edge tear at top. *VG/aFINE*

\$450 - \$500

- 313 1953 Coombs-Wilson (R 33s). Cleaned. *gF/aVF*

\$450 - \$500

- 314 1953 Coombs-Wilson (R 33s). Light stains, heavy creases. *VF*

\$825 - \$850



315 1961 Coombs-Wilson (R 34bs). A nice flat example. *UNC*
\$7000 - \$7500

Five Pound



316 1960 Coombs-Wilson (R 50s). Flat, with a trace of a light centre fold and some handling, and a number of small pinholes. Scarce this grade. *gEF/aUNC*
\$6800 - \$7000

Australian Decimal Starnotes

One Dollar

- 317 1967 Coombs-Randall (R 72s). Flattened of folds. *gVF/aEF*
\$650 - \$700
- 318 1969 Phillips-Randall ZAH (R 73sF). First star prefix. Folds. *aVF*
\$300 - \$350
- 319 1969 Phillips-Randall (R 73s). Flattened. *gVF*
\$350 - \$400
- 320 1969 Phillips-Randall (R 73s). *gEF*
\$1200 - \$1400



321 1969 Phillips-Randall (R 73s). Consecutive pair. Crisp, slightly wavy paper. *UNC*
\$2500 - \$2600

Two Dollar

322 1968 Phillips-Randall (R 83s). Flattened. *aEF*
\$600 - \$650

Five Dollar

323 1969 Phillips-Randall ZNC (R 203sF). First star prefix. Cleaned. *FINE*
\$800 - \$850

Ten Dollar

324 1966 Coombs-Wilson ZSA (R 301sF). *aVF*
\$350 - \$400



- 325 1966 Coombs-Wilson (R 301s). Consecutive pair. Crisp, slightly wavy paper with a hint of a bend and flick. *UNC*
\$2800 - \$3000
- 326 1967 Coombs-Randall ZSE (R 302sL). Last star prefix. *gFINE*
\$350 - \$400
- 327 1968 Phillips-Randall (R 303s). Crisp with folds. *aVF*
\$350 - \$400

- 328 1968 Phillips-Randall (R 303s). One pinhole, top edge bump. *gVF/aEF*
\$480 - \$500
- 329 1968 Phillips-Randall (R 303s). Flattened of folds, printed off cente. *aEF*
\$800 - \$850
- 330 1968 Phillips-Randall (R 303s). Flat with folds. *aEF*
\$1300 - \$1400



- 333 1974 Phillips-Wheeler Type 3 (SP 17). Stamped diagonally in red SPECIMEN with number 0231. Rare. *UNC*
\$4000 - \$4500

Ten Dollar



- 334 1988 Polymer Johnston-Fraser Type IV. (Sp 29a). Stamped Specimen No 0083 in red ink. Rare. *UNC*
\$5800 - \$6000

Australian Decimal Specimen Banknotes

One Dollar

331 1966 Specimen Type II Coombs-Wilson. AAA 000000 (SP 06). 8 Specimen overprints in red. Extremely rare, especially with no pinholes. *aU/UNC*
\$8000 - \$8500

World Gold Coins

- 335 Russia 5 Roubles 1897R. Nicholas II. *aVF*
\$150 - \$160
- 336 Russia 15 Roubles 1897R. Nicholas II. *aEF*
\$500 - \$550

Two Dollar



- 332 1974 Phillips-Wheeler Type 3 (SP 17). Stamped diagonally in red SPECIMEN with number 0181. Rare. *UNC*
\$4000 - \$4500



- 337 USA Gold Type set. Set of 6 \$1 to \$20 In lucite case. \$1 1850, \$1 1861, \$2.50 1878, \$5 1880S, \$10 1883, \$20 1905S. (6 coins). *FINE-aEF*
\$3000 - \$3200

Half Sovereign

338 1864 Sydney Mint. A few old scratches. Scarce. *VF*
\$500 - \$550

339 1882M Victoria Shield Reverse. Type 5/3. *gEF/EF*
\$900 - \$950

340 1887S Victoria Shield Reverse. Coin a little bent. Fancy bale attached at top with two solder points, not stamped. *aFINE*
\$180 - \$200



341 1896M Victoria Veiled Head. Ex RBA Sale Nov 2005, Lot 812. Subdued mint bloom. Scarce. *UNC*
\$2800 - \$3000

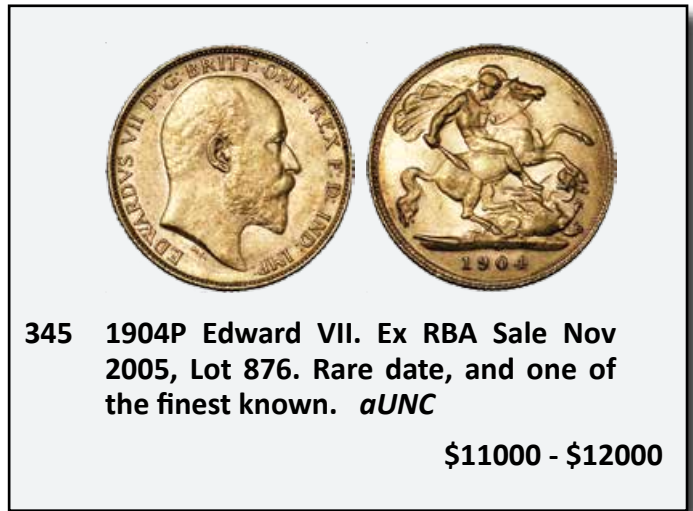


342 1897S Victoria Veiled Head. Ex RBA Sale Nov 2005, Lot 825. Scarce. *UNC*
\$2800 - \$3000



343 1897S Victoria Veiled Head. NGC graded MS 62. Subdued bloom. One of the highest graded. *UNC/Ch.UNC*
\$2800 - \$3000

344 1902S Edward VII. *aUNC* \$340 - \$350



345 1904P Edward VII. Ex RBA Sale Nov 2005, Lot 876. Rare date, and one of the finest known. *aUNC*
\$11000 - \$12000



346 1908P Edward VII. Ex RBA Sale Nov 2005, Lot 932. Rare date. *gEF*
\$3900 - \$4000

347 1915S George V. Satin bloom. *Ch.UNC*
\$280 - \$300

Sovereign



348 1855 Sydney Mint Type II. A good type coin. *gVF*
\$3400 - \$3500



349 1856M Sydney Mint. Type I. Rare this grade. *EF*
\$8500 - \$9000

350 1866 Sydney Mint. *gVF* \$550 - \$600

351 1867 Sydney Mint. *gVF* \$550 - \$600

352 1870 Sydney Mint. *gVF* \$525 - \$550

353 1870 Sydney Mint Victoria Type II. *gEF*
\$550 - \$600

354 1870. Sydney Mint Victoria Type II. Some
mint lustre. *aUNC/UNC*
\$850 - \$900



355 1870 Sydney Mint Victoria Type II. Mint
bloom. *Ch.UNC*
\$1600 - \$1800



356 1872M Victoria Young Head. Rare date,
first year of issue from Melbourne Mint.
aUNC
\$2300 - \$2400

357 1879S Young Head. Scarce date. *gEF*
\$600 - \$650



358 1879S Victoria. O over C in Victoria
variety. Mint bloom and good eye
appeal. NGC graded MS 62. Very rare
variety and one of the finest known, if
not the finest. *UNC/Ch.UNC*
\$8500 - \$9000



359 1880M Victoria Young Head. A nice
example with soft mint bloom and good
fields. With original tag as sold for \$5,500.
Ch.UNC
\$1400 - \$1500

360 1880S Victoria Young Head.
aUNC
\$420 - \$440

361 1883M Victoria Young Head. Ex RBA
Sale Nov 2005, Lot 1968. Scarce.
UNC
\$850 - \$900

362 1886M Victoria Young Head. Mint bloom.
Ch.UNC
\$1300 - \$1400

363 1887M Jubilee Head. Legend II IEB. Scarce.
gEF
\$525 - \$550



364 1887S. SS JEB Victoria Jubilee Head.
PCGS graded MS 62. Rare.
UNC/Ch.UNC
\$4400 - \$4500

365 1889S Jubilee Head. Legend II.
UNC
\$580 - \$600

366 1894S Victoria. *Ch.UNC*
\$650 - \$700

367 1899M Victoria. *Ch.UNC*
\$650 - \$700



368 1900 Victoria Veiled Head and 1902 Edward VII. (2 coins total). In wooden Monetarium custom case. *Ch.UNC*
\$2300 - \$2400

369 1905S Edward VII. *UNC*
 \$550 - \$600

370 1906M Edward VII. *Ch.UNC*
 \$580 - \$600

371 1906S Edward VII. PCGS graded MS 62. *UNC/Ch.UNC*
 \$480 - \$500

372 1907S Edward VII. NGC graded MS63. *UNC*
 \$410 - \$420

373 1907S Edward VII. PCGS graded MS 64. Scarce this nice. *Ch.UNC/GEM*
 \$900 - \$1000

374 1910S Edward VII. PCGS graded MS62. *UNC*
 \$380 - \$400

375 1913M George V. *GEM UNC*
 \$580 - \$600



376 1918S George V. NGC graded MS 66. Fully struck up with good surfaces and mint bloom. One of the finest known. *GEM UNC*
\$3400 - \$3500

377 1919M. George V. PCGS graded MS 62. *UNC/Ch.UNC*
 \$950 - \$1000

378 1924P George V. Scarce date. *EF*
 \$460 - \$480

379 1927P. George V. *aUNC*
 \$380 - \$400

380 1928P George V. *EF*
 \$500 - \$525

381 1930M George V. Small head. *aEF*
 \$410 - \$420

382 1930M George V. Small head. *EF*
 \$480 - \$500

383 1930P. George V. Mint bloom. *UNC*
 \$500 - \$550

Modern Australian Bullion Coins

384 \$200 Gold Proof 1980. No outer box, case a bit damaged. *FDC*
 \$400 - \$420

385 Discover Australia 1/10th oz gold Proof \$15 2012. *FDC*
 \$220 - \$240

386 Perth Mint Platinum Proof 1/10th Ounce Koala 1996. In case of issue with certificate. *UNC*
 \$150 - \$160

First Prefix Australian Banknotes

Ten Shillings



- 387 1954 Coombs-Wilson AC/00 (R 16F). Flattened with traces of folds. *aEF*
\$480 - \$500



- 388 1961 Coombs-Wilson AH/65 Circulation issue (R 17L). Consecutive pair. The much scarcer issued circulation notes (as opposed to the NPA archive notes). *UNC*
\$2200 - \$2400

Five Pound



- 389 1954 Coombs-Wilson TA/00 (R 49F). Flat. Scarce. *EF*
\$1200 - \$1400

Five Dollar

- 390 1967 Coombs-Randall NAA (R 202F). PMG graded 65 EPQ. *UNC*
\$480 - \$500

- 391 1992 polymer Fraser-Cole AA 00 (R 214F). Also 1996 polymer MacFarlane-Evans CV 97 (R 218bTii). Test note. (2 notes total). *aUNC-UNC*
\$110 - \$120



- 392 1992 polymer Fraser-Cole AA 00 (R 214F). Consecutive run of 8. Scarce. *UNC*
\$1100 - \$1200

- 393 1993 polymer Fraser-Evans BA 93 (R 216F). Consecutive trio. *UNC*
\$140 - \$150

- 394 2002 MacFarlane-Henry BA 02 (R 220aF). Consecutive run of 13. *UNC*
\$300 - \$320

Ten Dollar



- 395 1988 polymer Johnston-Fraser AB 10 (R 310aF). Consecutive pair. Light trace of a bend. *aUNC*
\$700 - \$750

- 396 1988 polymer Johnston-Fraser AB 10 (R 310bF). (2 notes). *gVF-UNC*
\$300 - \$320

- 397 1988 polymer Johnston-Stone AB 10 (R 310bF). *UNC*
\$190 - \$200



398 1993 Fraser-Evans AA 94 (R 316biF).
Consecutive pair. *UNC*
\$1000 - \$1100

399 1996 MacFarlane-Evans AA 96 (R 318aF).
Consecutive run of 12. *UNC*
\$1200 - \$1400

400 2006 MacFarlane-Henry AA 06 (R 320cF).
Three consecutive pairs and a single. (7
notes total). *UNC*
\$260 - \$280

Twenty Dollar



401 1994 polymer Fraser-Evans AA 94 (R
416aF). Consecutive run of 7. *UNC*
\$1200 - \$1400

402 1995 polymer Fraser-Evans AA 95 (R
416bF). Consecutive pair. *UNC*
\$450 - \$500

403 1997 polymer MacFarlane-Evans AA
97 (R 418aF). Also \$50 1997 polymer
MacFarlane-Evans (R 518a) (aUNC). (2
notes total). *aUNC-UNC*
\$140 - \$150

404 2002 polymer MacFarlane-Henry AA 06
(R 420dF). Three consecutive pairs and a
single. (7 notes total). *UNC*
\$260 - \$280

Fifty Dollar

405 1973 Phillips-Wheeler YAA (R 505F).
aUNC
\$350 - \$360

406 1998 polymer MacFarlane-Evans AA 98 (R
518bF). Consecutive pair. *UNC*
\$480 - \$500

407 1999 polymer MacFarlane-Henry AA 99 (R
518cF). Consecutive pair. *UNC*
\$240 - \$250

408 2003 polymer MacFarlane-Henry AA 03 (R
520aF). Consecutive pair. *UNC*
\$200 - \$220

One Hundred Dollar

409 1984 Johnston-Stone ZAA (R 608F).
Consecutive pair. *UNC*
\$525 - \$550

410 1998 polymer MacFarlane-Evans AA 99 (R
618bF). Consecutive pair. *UNC*
\$320 - \$340

411 2008 polymer Stevens-Henry AA 08 (R
621aF). Consecutive pair. *UNC*
\$320 - \$340

Last Prefix Australian Banknotes

One Pound



412 1961 Coombs-Wilson HK/65 (R 34bF).
aUNC
\$700 - \$750

One Dollar

- 413 1982 Johnston-Stone DPS (R 78L).
Consecutive trio. *UNC*
- \$90 - \$100

Two Dollar

- 414 1985 Johnston-Fraser LQG (R 89L).
Consecutive pair and 2 singles. (4 notes
total). *UNC*
- \$110 - \$120

Five Dollar

- 415 1985 Johnston-Fraser QBJ (R 209bL). 1st
has light bend, 2nd has centre bend &
flicks. (2 notes total). *aUNC-aUNC/UNC*
- \$180 - \$200

- 416 1991 Fraser-Cole QPG (R 213L).
Consecutive trio. *UNC*
- \$110 - \$120

- 417 1991 Fraser-Cole QPG (R 213L).
Consecutive run of 4. *UNC*
- \$140 - \$150

- 418 1992 polymer Fraser-Cole AB 19 (R 214L).
Folds. *gF/aVF*
- \$80 - \$100

- 419 1992 polymer Fraser-Cole AB 19 (R 214L).
Folds. *VF*
- \$140 - \$150



- 420 1992 polymer Fraser-Cole AB 19 (R 214iL).
UNC
- \$600 - \$650

- 421 1996 polymer Fraser-Evans HB 97 (R
218bL). Consecutive pair. *UNC*
- \$650 - \$700

Ten Dollar

- 422 1988 polymer Johnston-Fraser AB 33 (R
310aL). *UNC*
- \$800 - \$850

- 423 1988 polymer Johnston-Fraser AB 57 (R
310bL). Consecutive pair. *UNC*
- \$1500 - \$1600



- 424 1988 Johnston-Fraser AB 57 (R 310bL).
Consecutive pair. PMG graded EPQ 65
Gem Uncirculated. Scarce this nice. *UNC*
- \$1500 - \$1600

- 425 1993 polymer Fraser-Evans DF 94 (R
316bL). *UNC*
- \$625 - \$650

- 426 1994 polymer Fraser-Evans DF 94 (R
316biL). Grey shading of Dobell type. *UNC*
- \$360 - \$380



- 427 **Twenty Dollar** 1994 polymer Fraser-
Evans PE 94 (R 416aL). Last 1994 dated
prefix. Multiple folds. Very rare in any
grade. *gFINE*
- \$2200 - \$2400

Twenty Dollar

- 428 1996 polymer Fraser-Evans DA 96 (R 416cL). *UNC*
\$220 - \$240
- 429 1997 polymer MacFarlane-Evans DA 98 (R 418bL). Consecutive pair. *UNC*
\$480 - \$500



- 430 1997 polymer MacFarlane-Evans DA 98 (R 418bL). Consecutive run of 5. *UNC*
\$1400 - \$1500
- 431 2006 polymer MacFarlane-Henry JC 06 (R 420dL). Consecutive run of 5. *UNC*
\$180 - \$200

Fifty Dollar

- 432 1993 Fraser-Evans FAB (R 515L). Consecutive run of 4. *UNC*
\$450 - \$500
- 433 1997 polymer MacFarlane-Evans PE 99 (R 518cL). Consecutive pair. *UNC*
\$360 - \$380



- 434 2007 polymer MacFarlane-Henry JC 06 (R 520dL). Consecutive run of 10. *UNC*
\$800 - \$850

One Hundred Dollar

- 435 1991 Fraser-Cole ZLD (R 613L). Consecutive pair. *UNC*
\$300 - \$320
- 436 1996 polymer Fraser-Evans AA 96/JK 96 (R 616F/616L). (2 notes total). *UNC/VF*
\$400 - \$450
- 437 1996 polymer Fraser-Evans JK 96 (R 616L). *UNC*
\$350 - \$360



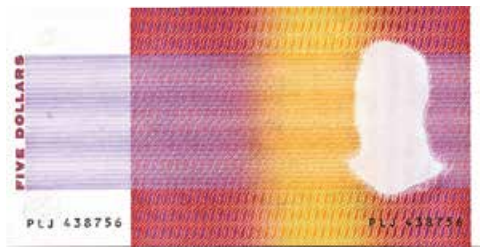
- 438 1996 polymer Fraser-Evans JK 96 (R 616L). Consecutive pair. *UNC*
\$1000 - \$1100
- 439 1998 polymer MacFarlane-Evans CF 98 (R 618aL). *VF*
\$240 - \$260
- 440 1999 polymer MacFarlane-Evans JK 99 (R 618bL). Consecutive pair. *UNC*
\$340 - \$350

Misprinted Australian Banknotes

One Dollar

- 441 1974. Mis-cut on a slight diagonal on both sides. *aUNC*
\$180 - \$200

Five Dollar



- 442 1985. Missing all intaglio (black) print phase on front including signatures. Scarce. *UNC*

\$1200 - \$1400



- 446 1994 polymer. Missing intaglio (black print) on front. *aEF*

\$1200 - \$1400



- 443 2001 polymer. Missing partial grey print phase along bottom front of note, causing missing image of house and incomplete State emblems. As detailed in CAB Aug 2002. Scarce. *UNC*

\$480 - \$500



- 447 1983. Test printing on blue paper, as a printers proof or design test during development. *gEF*

\$950 - \$1000



- 448 1993 (R 415). Significant registration shift and paper mis-cut, resulting in no white border on R/H side. Scarce. *aUNC*

\$600 - \$650



Ten Dollar

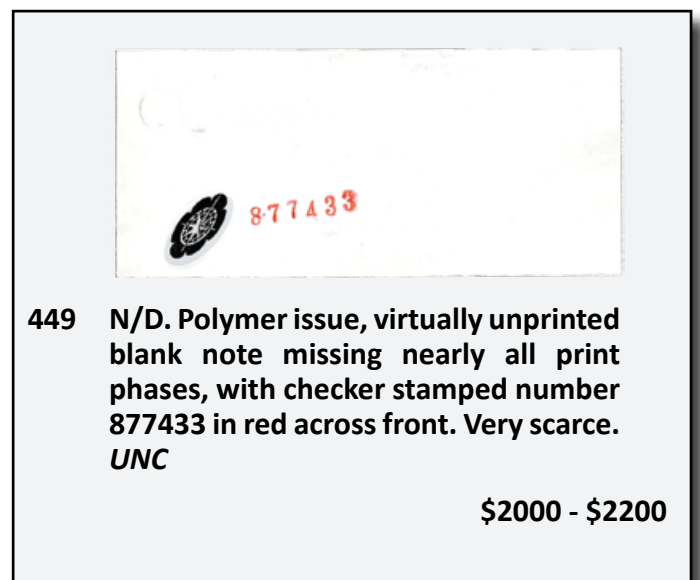
- 444 1988 polymer. Faulty OVD symbol, hologram not fully printed up with small sections missing. *aUNC/UNC*

\$130 - \$140



- 445 1988 Polymer. Hologram in OVD printed to far right, approximately 1 cm offset. Scarce and unusual. *gFINE*

\$600 - \$650



- 449 N/D. Polymer issue, virtually unprinted blank note missing nearly all print phases, with checker stamped number 877433 in red across front. Very scarce. *UNC*

\$2000 - \$2200

Fifty Dollar



- 450 1985. Last digit of both serials heavily printed, resulting from a jam with numbering press. Consecutive pair. Flicks, centre fold. *aUNC*

\$500 - \$550

One Hundred Dollar



- 451 1990 Fraser-Higgins mis-matched serials. Third digit in serials one number different. Serials ZGV 746848/747848. Scarce. *UNC*

\$1600 - \$1800

Australian And Related Coin Rarities



- 452 Adelaide Pound 1852 Type II. Edge knock or flan flaw and test cut on edge/rim on Obverse, with a well struck Reverse and overall good details. A good type coin and very well priced for this rare really gold issue. *gVF/aEF*

\$10000 - \$11000



- 453 Square Kookaburra Pattern Penny 1919. Type 6. Light old tone and two minor planchet flaws on Obverse from striking but no wear to coin. Far rarer than the common type 12 examples sold for more than this price, this would have to be one of the cheapest Kookaburra Pennies on the market. *UNC*

\$25500 - \$26000



454 Penny 1930. Key date. 6 Pearls visible, nice strong Reverse, and good rim. A better than average example of this rare key date issue. *gFINE/aVF*

\$17000 - \$17500



455 Proof Penny 1938. Original bright old red and purple tone with lovely clear proof fields, and a square raised rim. One of the finest Proof examples of this date we have seen. Rare. *FDC*

\$10000 - \$12000



456 Proof Penny 1953A. Dark purple and brown/red tone with nice clear fields and a raised square rim. With ticket as sold for \$74,000. Rare. *FDC*

\$9000 - \$9500



457 Shilling 1915H. Originally sold as a Specimen with original tag as sold for \$65,000. Light tone, good fields and generally sharp details for this issue, with some wear on the high points. Rare. *UNC*

\$8500 - \$9000



458 Proof Shilling 1935. Attractive old blue and gunmetal tone with much brilliance, sharp details and proof fields with die polishing marks. Ex IAG Sale 77, March 2013. Very rare. *FDC*

\$17000 - \$18000



459 Specimen silver set 1910. Lovely old green and red matched tone to all, fully struck up with sharp details and only some minor surface marks. Extremely rare as such. (4 coins total). *GEM UNC*

\$30000 - \$32000



460 Uniface 1937 Crown. Pattern of Trial striking (McD 1937a see pp 109 of the 22nd edition). Ex Spinks London, the Jerry Remick collection and IAG Sale 65 March 2007. With original old packet describing it as - 1937 Crown Proof Uniface, Unique. Darkly toned, and virtually as struck. With original tag as sold for \$110,000. *Ch.UNC*

\$17000 - \$1800



461 Proof Crown 1937. PCGS graded PR 62. Bright mint bloom with a few minor Obverse marks. Rare. *FDC*

\$14000 - \$15000

Australian Pre Decimal Coins II

Halfpenny



462 1911. PCGS graded MS 64 RB. Nearly full bright mint red. *Ch.UNC/GEM*

\$800 - \$850



463 1914H. PCGS graded MS 64RB. Mint red and brown. *Ch.UNC/GEM*

\$1200 - \$1400



464 1919. PCGS graded MS 64RD. Mostly mint red. *Ch.UNC/GEM*

\$700 - \$750

Penny



470 1911. Nearly full bright mint red. *Ch.UNC/GEM*

\$580 - \$600



465 1923. Key date. PCGS graded XF 45. Nearly full band with 8 pearls visible. *gVF/aEF*

\$3300 - \$3400



471 1911. PCGS graded MS 64RD. Full bright mint red. *Ch.UNC/GEM*

\$1500 - \$1600

466 1929. Mint brown and red. Semi tough date. *UNC/Ch.UNC*

\$280 - \$300



472 1916. Fully struck up mint red and brown, with a square, raised rim and specimen like appearance. *Ch.UNC/GEM*

\$1400 - \$1500



467 1930. PCGS graded MS 63RB. Ex Borg collection. Mint red and brown, and a good example of this tough date. *Ch.UNC*

\$700 - \$750



473 1917. Nearly full mint red. A few minor Obverse marks. *Ch.UNC*

\$700 - \$800

468 1932. Mint Brown and red. *Ch.UNC*

\$300 - \$325

469 1934. PCGS graded MS 63 RB. Mint red and brown. *Ch.UNC*

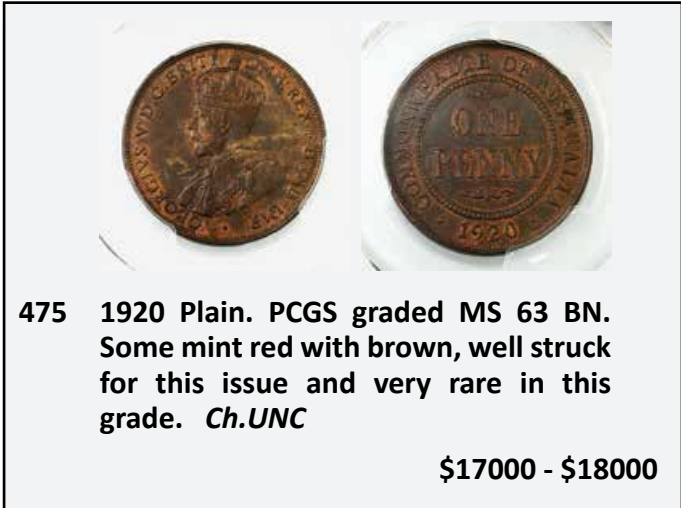
\$350 - \$400



474 1918. Brown with some mint red. Scarce date. *UNC/Ch.UNC*
\$2300 - \$2400



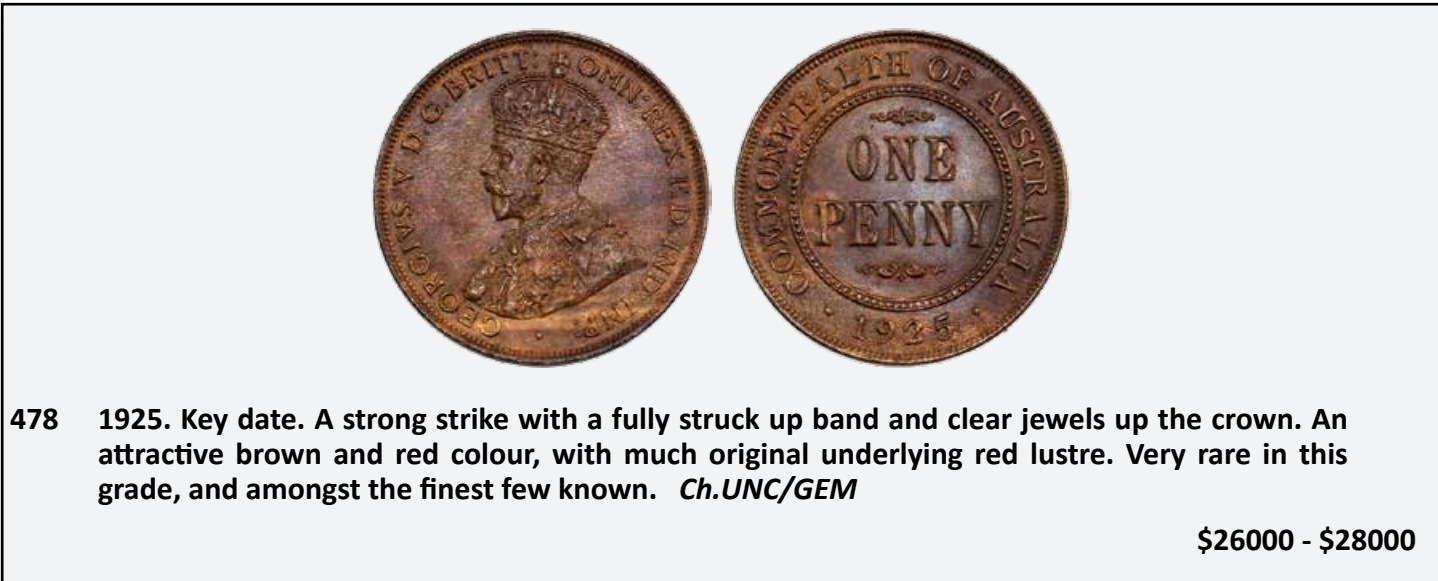
476 1922. Wide date variety with a low 9. PCGS graded MS 63 BN. Even brown lustre with traces of mint red. Scarce type. *Ch.UNC*
\$700 - \$750



475 1920 Plain. PCGS graded MS 63 BN. Some mint red with brown, well struck for this issue and very rare in this grade. *Ch.UNC*
\$17000 - \$18000



477 1925. Key date. 8 Pearls and most of a full band. *gVF/aEF*
\$250 - \$260



478 1925. Key date. A strong strike with a fully struck up band and clear jewels up the crown. An attractive brown and red colour, with much original underlying red lustre. Very rare in this grade, and amongst the finest few known. *Ch.UNC/GEM*
\$26000 - \$28000



479 1926. PCGS graded MS 64 BN. Traces of mint red, and a tough date. *Ch.UNC/GEM*
\$2300 - \$2400



480 1933/2 Overdate. PCGS graded MS 63BN. Ex Borg collection. Mint brown with some red highlights, and well struck. Very rare in this grade, and one of the finest known. *Ch.UNC*
\$4500 - \$5000



481 1934. Mint brown and red. *Ch.UNC*
\$250 - \$260



482 1940M. PCGS graded MS 64RB. Mint red and brown. *Ch.UNC/GEM*
\$480 - \$500



483 1943I. PCGS graded MS 65RB. The equal finest RB example. Mostly mint red. *GEM UNC*
\$850 - \$900



484 1944Y. PCGS graded MS 64RB. Mint brown and red. *Ch.UNC/GEM*
\$700 - \$750

485 1947Y. PCGS graded MS 63BN. Mint brown with some red highlights, and a well struck example of this tough date. *Ch.UNC*
\$380 - \$400

486 1964. PCGS graded MS 65 RD. Full blazing mint red. Scarce this grade. *GEM UNC*
\$150 - \$160

Threepence

487 1910. PCGS graded MS 64. Nice old tone. *Ch.UNC/GEM*
\$280 - \$300



488 1911. PCGS graded MS 64+. Peripheral tone. *Ch.UNC/GEM*
\$900 - \$950



489 1911. PCGS graded MS 65. Toned on Obverse and well struck. Ex Borg Collection. *GEM UNC*
\$1400 - \$1500



490 1912. PCGS graded Genuine, cleaned with UNC details. *UNC*
\$1100 - \$1200



491 1912. PCGS graded MS 64. Toned, especially on the Obverse. Ex Borg Collection, amongst the finest known. *Ch.UNC/GEM*
\$3000 - \$3200



492 1914. PCGS graded MS 64. Old tone with underlying mint bloom. Only 3 coins graded higher. Scarce. *Ch.UNC/GEM*
\$4250 - \$4500

497 1919. PCGS graded MS 64. Some light uneven tone. *Ch.UNC/GEM*
\$325 - \$350



498 1919. PCGS graded MS 64. Bright mint bloom and struck up. *Ch.UNC/GEM*
\$550 - \$600



493 1915. PCGS graded MS 63. Light tone, struck up with a great Reverse, and one of the finest known of this key date. Rare in this grade. *Ch.UNC*
\$7500 - \$8000

498 1919. PCGS graded MS 64. Bright mint bloom and struck up. *Ch.UNC/GEM*
\$550 - \$600



499 1920M. Dark old gunmetal and blue tone, full struck up, especially on the Obverse with sharp details and a specimen like appearance. *Ch.UNC/GEM*
\$2800 - \$3000



494 1916. PCGS graded Genuine. Cleaned with UNC details. Light marks on the Obverse. *UNC*
\$1100 - \$1200

500 1921M. PCGS graded MS 64. Bright mint bloom. *Ch.UNC/GEM*
\$300 - \$350

495 1917. PCGS graded MS 64. Old tone with underlying bloom. *Ch.UNC/GEM*
\$550 - \$600



501 1921M. PCGS graded MS 65. Mint bloom. *GEM UNC*
\$1100 - \$1200



496 1918. PCGS graded MS 64. Green and red bronze tone with mint bloom. *Ch.UNC/GEM*
\$850 - \$900



502 1921 Plain. PCGS graded MS 64. Toned Obverse with sharp details, with a lustrous prooflike Reverse. Very scarce in this grade. *Ch.UNC/GEM*
\$2900 - \$3000



503 1924. PCGS graded MS 63. Light tone with soft bloom. A tough date in high grade. Scarce. *Ch.UNC*
\$3200 - \$3400

504 1925. PCGS graded MS 63. Mint bloom. *Ch.UNC*
\$370 - \$380

505 1927. PCGS graded MS 64. Light old tone. *Ch.UNC/GEM*
\$300 - \$350

506 1928. PCGS graded MS 64. Light tone with mint bloom. *Ch.UNC/GEM*
\$300 - \$350

507 1934. PCGS graded MS 64. Light tone with underlying mint bloom. *Ch.UNC/GEM*
\$300 - \$350



508 1935. PCGS graded MS 64+. Light attractive tone with nearly full mint bloom. *Ch.UNC/GEM*
\$450 - \$500

509 1936. PCGS graded MS 65. Light tone with bloom. *GEM UNC*
\$240 - \$250



510 1939. PCGS graded MS 64. Mint bloom. *Ch.UNC/GEM*
\$340 - \$350



511 1942. PCGS graded AU 55. Light attractive tone, with a good reverse. *aUNC*
\$850 - \$900

512 1950. PCGS graded MS 65. Light tone with bloom. Equal second highest graded. Scarce this grade. *GEM UNC*
\$260 - \$280



513 1952. PCGS graded MS 66. Equal highest graded. Scarce this grade. *GEM UNC*
\$300 - \$350

514 1954. PCGS graded MS 64. *Ch.UNC/GEM*
\$250 - \$260

515 1956. PCGS graded MS 65. Equal second highest graded. Rare this grade. *GEM UNC*
\$120 - \$140

516 Complete collection except for 1922/21 overdate. 1910 is UNC, 1911-1936 mostly Fine or better, 1942 is aVF, 1938 on mostly aU-UNC. (52 coins total). *VG-UNC*
\$850 - \$900

Sixpence



517 1910. PCGS graded MS 63. Light tone with mint bloom. *Ch.UNC*

\$425 - \$450



518 1911. PCGS graded MS 65. Nice old tone with underlying bloom, and sharply struck. *GEM UNC*

\$3500 - \$3600



519 1916. Attractive red and blue old tone. Sharply struck and scarce this grade. *Ch.UNC/GEM*

\$2400 - \$2500



520 1919. Superb red and blue tone with mint bloom, sharply struck with lovely eye appeal. Rare this grade. *GEM UNC*

\$3400 - \$3500



521 1920. Light tone with mint bloom. Scarce. *Ch.UNC*

\$2200 - \$2400

522 1921. Bright bloom. *Ch.UNC*

\$480 - \$500



523 1924. PCGS graded MS 64. Old gunmetal reddish tone and sharply struck. One of the finest known. Rare in this grade. *Ch.UNC/GEM*

\$3000 - \$3500



524 1925. PCGS graded MS 63. Ex Borg Collection. Peripheral Reverse tone, some Obverse marks. *Ch.UNC*

\$1100 - \$1200

525 1927. Some mint bloom. *UNC/Ch.UNC*

\$200 - \$220

526 1934. Light tone. *UNC/Ch.UNC*

\$260 - \$280



527 1935. PCGS graded MS 63. Light tone with soft bloom and a sharp Obverse. *Ch.UNC*

\$1400 - \$1500

528 1943S. PCGS graded MS 64. Bright mint bloom. The equal second highest graded, and very scarce in this grade. *Ch.UNC/GEM*
\$180 - \$200



535 1914. PCGS graded MS 63. Light tone with mint bloom. *Ch.UNC*
\$900 - \$950

529 1952. Scarce date. *UNC*
\$350 - \$400

530 1953. PCGS graded MS 63. Some bright bloom. *Ch.UNC*
\$350 - \$360

531 1957. PCGS graded MS 65. *GEM UNC*
\$140 - \$150



536 1914. PCGS graded MS 63. Light tone with some bloom. *Ch.UNC*
\$1200 - \$1400

Shilling



532 1910. PCGS graded MS 64. Light gunmetal tone. *Ch.UNC/GEM*
\$800 - \$850



533 1911. A few minor marks. *UNC/Ch.UNC*
\$1100 - \$1200



534 1913. Attractive light gunmetal green/reddish tone. Well struck, and scarce this grade. *UNC*
\$2800 - \$3000



537 1915. PCGS graded MS 64. Old tone with underlying bloom, struck up with a sharp Reverse. Only two coins graded higher, and one of the finest known of this tough date. Rare in this grade. *Ch.UNC/GEM*
\$10000 - \$11000



538 1915H. PCGS graded MS 63. Bright mint bloom and well struck for this date. One of the finest known and rare in this grade. *Ch.UNC*
\$12000 - \$14000

539 1916. PCGS graded MS 62+. A few marks.
UNC/Ch.UNC

\$280 - \$300



540 1917. PCGS graded MS 64. Light tone with some bloom and a few minor marks. With sticker as sold for \$1,800. *Ch.UNC/GEM*

\$450 - \$500



541 1921 Star. Key date. Light tone with some bloom. *EF*

\$600 - \$650

542 1927. Mint bloom. *UNC*

\$300 - \$350



543 1933. Key date. A little flat through the band. *gVF/aEF*

\$500 - \$550



544 1933. Key date. *gEF*

\$800 - \$850



545 1935. PCGS graded MS 64. Light tone with soft bloom. *Ch.UNC/GEM*

\$800 - \$850

546 1938. PCGS graded MS 62. A few Obverse marks. *UNC/Ch.UNC*

\$110 - \$120

547 1940. Slight planchet flaw. *UNC*

\$240 - \$250

Florin



548 1910. Light tone and good eye appeal, but with many light scratches on the Obverse fields to right of portrait. A decent Reverse type coin. *gVF/aEF*

\$450 - \$500



549 1910. Light tone with some bloom, contact marks on Obverse, but no real wear. *UNC*

\$1200 - \$1300



550 1910. Some very light surface marks, but an otherwise attractive coin with bright bloom and well struck. *UNC/Ch.UNC*

\$1800 - \$2000



551 1911. PCGS graded MS 64. Light soft tone and well struck up for this date. One of the finest known and rare this grade. *Ch.UNC/GEM*

\$14000 - \$15000



552 1914. PCGS graded MS 64+. Old gunmetal/blue tone with mint bloom and lovely eye appeal. The equal highest graded example. Very rare this grade. *Ch.UNC/GEM*

\$18000 - \$20000



553 1914H. Key date. PCGS graded MS 65. The equal highest graded. Bright mint bloom with lovely surfaces and well struck. Very rare in this grade. *GEM UNC*

\$35000 - \$40000



554 1915. Key date. Light tone with some mint bloom, and well struck up details. Rare. *Ch.UNC*

\$7800 - \$8000



555 1916. PCGS graded MS 63. Light tone. *Ch.UNC/GEM*

\$1700 - \$1800



556 1917. Reddish tone with mint bloom. *Ch.UNC*

\$1100 - \$1200



557 1921. PCGS graded MS 65+. Soft tone with mint bloom, lovely surfaces and fully struck up. This coin has fantastic eye appeal. The second finest known, and very rare in this grade. *GEM UNC*

\$17000 - \$18000



558 1922. PCGS graded MS 64. Golden tone with mint bloom and well struck for this date. Only two coins graded higher, and one of the finest known. Rare in this grade. *Ch.UNC/GEM*

\$6000 - \$7000

**View Every Single Lot Image
in Full screen, high resolution:**

www.iagauctions.com



559 1923. PCGS graded MS 65+. Lovely green and red-gold tone, sharply struck with beautiful eye appeal and a stunning Reverse. One of the finest known, with only two coins graded higher. Rare in this grade. **GEM UNC**

\$13000 - \$15000



560 1924. PCGS graded MS 65. Light tone with subdued bloom and sharply struck details. The equal second highest example graded. Rare in this grade. **GEM UNC**

\$9000 - \$10000

564 1931. PCGS graded MS 63. Bright bloom. **Ch.UNC**

\$550 - \$600



565 1931. PCGS graded MS 64. Light tone. **Ch.UNC/GEM**

\$800 - \$850



561 1925. Very light tone. Sharp strike on the Obverse, but with some marks. **aUNC**

\$300 - \$320



562 1925. PCGS graded MS 63. Light tone with nice mint bloom. **Ch.UNC**

\$2000 - \$2200

563 1927 Canberra. PCGS graded MS 64. Toned with some mint bloom. **Ch.UNC**

\$140 - \$150

566 1931. PCGS graded MS 65. Light tone with lovely soft bloom. The equal highest graded. **GEM UNC**

\$850 - \$900



567 1932. Key date. Light tone with good details. **VF**

\$600 - \$650



568 1933. PCGS graded MS 64+. Bright mint bloom and fully struck up. One of the best examples of this rare date I have seen, with only 2 coins graded higher. Very rare in this grade. *GEM UNC*

\$25000 - \$26000



569 1934 *UNC*

\$480 - \$500



572 1934/35 Melbourne Centenary. PCGS graded MS 65+. Rare in this grade. Soft tone with bloom. *GEM UNC*

\$1500 - \$1600



570 1934/35 Melbourne Centenary. PCGS graded MS 63. Light tone with wreath visible. *Ch.UNC*

\$700 - \$750



573 1934/5 Melbourne Centenary. PCGS graded MS 66. Light attractive old tone with mint bloom, and a fully struck up wreath. Amongst the finest known, and one of the nicest examples we have had. Rare this grade. *GEM UNC*

\$2000 - \$2200



571 1934/5 Melbourne Centenary. PCGS graded MS 65. Old tone with subdued bloom. *GEM UNC*

\$1000 - \$1100



574 1935. PCGS graded MS 65. Soft golden tone with subdued mint bloom. Among the finest graded. Rare this grade. **GEM UNC**
\$1500 - \$1600

575 1936. Soft mint bloom, contact mark on Obverse. **Ch.UNC**
\$240 - \$250

576 1939. PCGS graded MS 61. Light tone with a few Obverse marks. **UNC**
\$325 - \$350



577 1939. Key date. Soft frosty mint bloom. Scarce. **UNC/Ch.UNC**
\$1700 - \$1800

Crown



578 1938. PCGS graded AU 58. Scratch on Obverse. **aUNC**
\$280 - \$300



579 1938. PCGS graded AU 58. A few light marks as usual with some bloom. **aUNC/UNC**
\$300 - \$320

Australian Pre Decimal Proof Coins



580 Proof Halfpenny 1935. Soft mint red and brown tone. Rare. **FDC**
\$9000 - \$9500



581 Proof Halfpenny 1955. NGC graded PF 64 RB. Mint red with light tone. **FDC**
\$5000 - \$5500

582 Proof Halfpenny 1961Y. Mint red. **FDC**
\$280 - \$300

583 Proof Halfpenny 1963Y. PCGS graded PR 66 RD. **FDC**
\$500 - \$550



584 Proof Penny 1953A. Dark brown with hints of purple tone with nice clear fields. With tag as sold for \$55,000. Rare. **FDC**
\$6800 - \$7000

585 Proof Penny 1956. Toned.
aFDC

\$140 - \$150

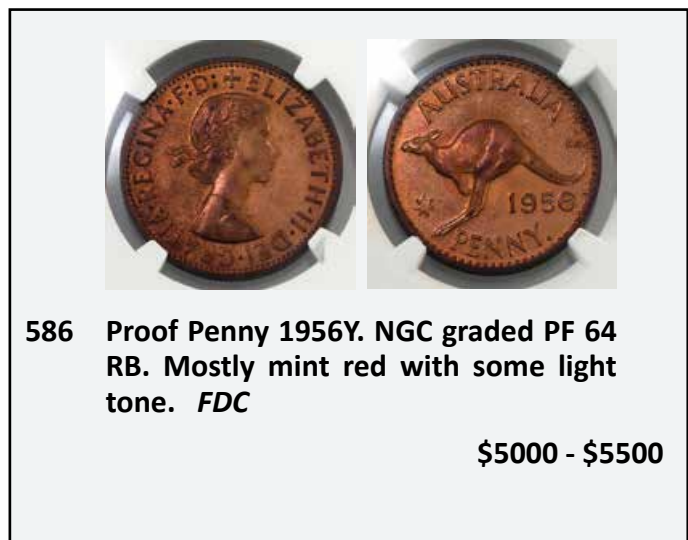


590 Proof Sixpence 1934. Some nice old light
tone. Rare. *FDC*

\$3250 - \$3500

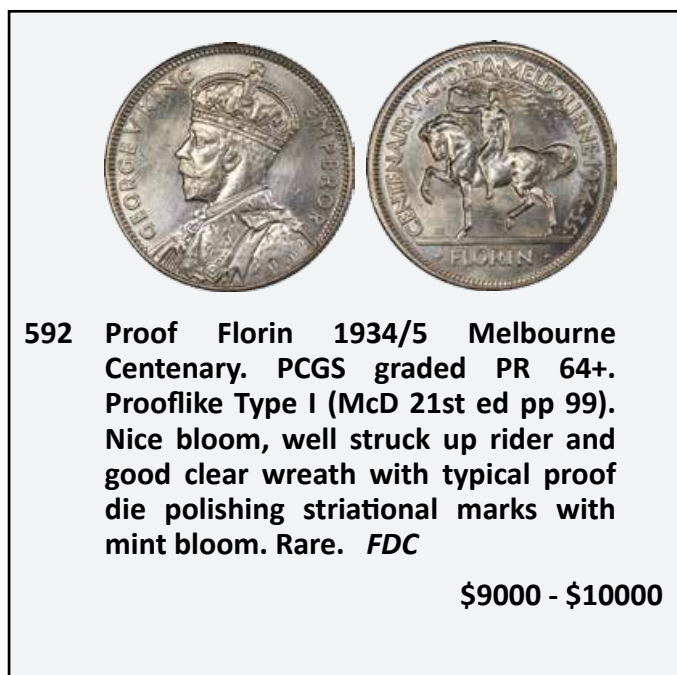
591 Proof Shilling 1957. *FDC*

\$140 - \$150



586 Proof Penny 1956Y. NGC graded PF 64
RB. Mostly mint red with some light
tone. *FDC*

\$5000 - \$5500



592 Proof Florin 1934/5 Melbourne
Centenary. PCGS graded PR 64+.
Prooflike Type I (McD 21st ed pp 99).
Nice bloom, well struck up rider and
good clear wreath with typical proof
die polishing striational marks with
mint bloom. Rare. *FDC*

\$9000 - \$10000

587 Proof Penny 1961Y. Mostly mint red.
FDC

\$280 - \$300



588 Proof Halfpenny and Penny 1962Y. Mostly
mint red. *FDC*

\$550 - \$600

593 Proof Florin 1959. PCGS graded PR 65.
Light tone. With sticker as sold for \$800.
FDC

\$160 - \$180

594 Proof Florin 1959. PCGS graded PR 65.
FDC

\$200 - \$220

595 Proof Florin 1960. PCGS graded PR 66 Light
tone. With sticker as sold for \$800. *FDC*

\$140 - \$150

596 Proof Florin 1961. PCGS graded PR 65 Light
tone. With sticker as sold for \$725. *FDC*

\$130 - \$140



589 Proof Penny 1963Y. Bright mint red.
FDC

\$400 - \$450

597 Proof Silver set of 4 1957M Threepence to
Florin. Some light tone. *FDC*

\$450 - \$500

598 Proof Silver set of 4 1962M, Threepence to Florin. With the original black case of issue. *FDC*
\$220 - \$240

599 Proof Silver set of 4 1963M, Threepence to Florin. With the original black case of issue. *FDC*
\$220 - \$240

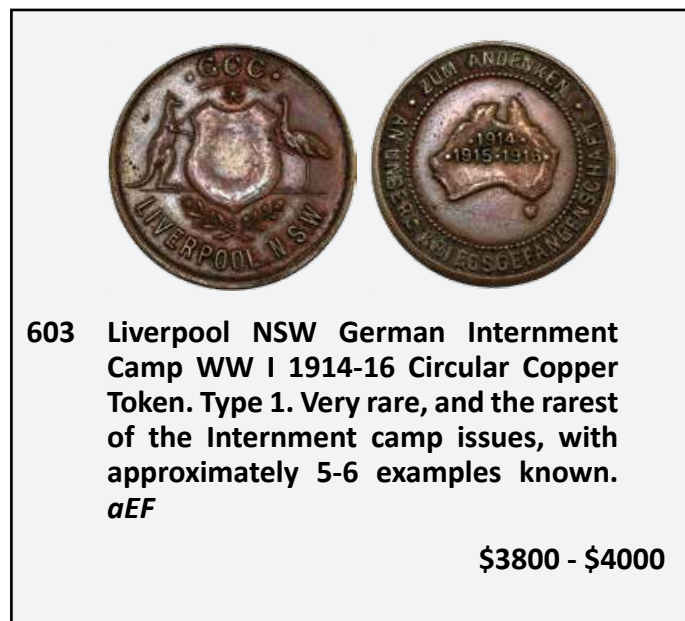


602 Liverpool, NSW German Internment Camp WW I 1914-16 circular issue. Type 1a, struck in aluminium. Rare. *VF*
\$1600 - \$1800

Unofficial Patterns, Restrikes & Forgeries



600 Adelaide Assay Office 1852 Hunt-Deacon Type 7. An original uniface electrotype produced by Sawtell C 1894-1910 (electrotype stamped on Reverse). Rare and interesting. *gVF*
\$1200 - \$1400



603 Liverpool NSW German Internment Camp WW I 1914-16 Circular Copper Token. Type 1. Very rare, and the rarest of the Internment camp issues, with approximately 5-6 examples known. *aEF*
\$3800 - \$4000

Internment Camps



601 Irish POW Internment Camps Tokens Curragh, Dublin WWII 1940. Set of 4, Penny, Sixpence, Shilling and Florin. Interesting, with article about the camp enclosed. (4 coins total). *aEF-aUNC*
\$500 - \$600



604 Liverpool, NSW German Internment Camp WW I Threepence. Type II, struck in aluminium. Mint bloom with toning and virtually as struck. Rare this grade, and one of the finest known. *UNC*
\$2300 - \$2400

605 Penny Internment Camps Token WWII. *aUNC*
\$250 - \$260

606 Threepence Internment Camps Token WWII. Mostly mint red. *Ch.UNC*
\$280 - \$300

Radar Serial Number Notes



- 607 One Shilling Internment Camps Token
WWII. Traces of mint red. *aUNC*
\$600 - \$650



- 608 Two Shillings Internment Camps Token
WWII. Mint red and brown. *aUNC*
\$1300 - \$1400



- 609 Five Shillings Internment Camps Token
WW II. Substantial mint red and brown
lustre. Rare this grade. *UNC/Ch.UNC*
\$5000 - \$5500

- 610 SMS Emden 10 Pfennig Canteen Token
Type I in brass. Slight edge corrosion on
Reverse. *VF*
\$260 - \$280



- 611 SMS Emden 50 Pfennig Canteen Token in
brass. *VF*
\$260 - \$280

One Dollar



- 612 1976. Radar serials CBJ 037730. Also with
polymer \$50 1995 with both notes having
matching radar serials GC 95 037730. (2
notes total). Rare and almost impossible
to duplicate. *gFINE-aEF*

\$140 - \$150

Five Dollar

- 613 1983 Johnston-Stone (R 208). Radar serials
with central solid numbers and scarce as
such. Serials PEP 944449. *UNC*

\$70 - \$80

- 614 1998 polymer MacFarlane-Evans EA 98 (R
218cL). Last prefix with full 8 digit radar
serials. Serials EA 98 722 789. Scarce as
such. *UNC*

\$130 - \$140

Ten Dollar

- 615 2003. Matching consecutive prefix Radar
serials BE/BF 03 400 004. (2 notes total).
Scarcer type with central solid numbers.
UNC

\$130 - \$140

- 616 1991 Fraser-Cole (R 313a). Radar serials
MJH 052250. *UNC*

\$50 - \$60

- 617 1991 Fraser-Cole (R 313a). Radar serials MJH/MJP 052250. (2 notes total). *UNC*
\$90 - \$100

- 618 2002 MacFarlane-Henry radar serial pair with consecutive prefixes. Serials BE/BF 02 400 004. Scarcer type with central solid numbers. (2 notes total). *UNC*
\$100 - \$120



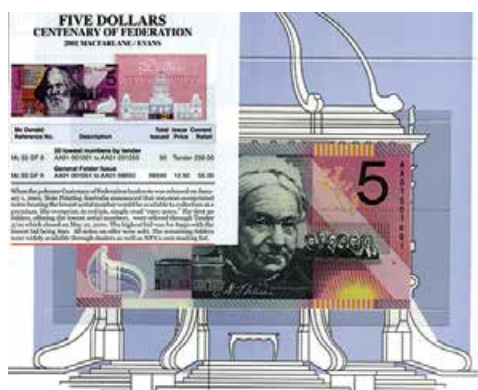
One Hundred Dollar



- 619 1996 polymer. 8 digit Radar serials. Serials EB 96 666 669. Very scarce. *gVF*
\$220 - \$240

- 620 1999 polymer. Radar serials. Serials CC 99 705507. Scarce. *aU/UNC*
\$180 - \$200

- 623 1997 polymer MacFarlane-Evans DN 97 (R 218TL). Last test note prefix. Rare. (Catalogues at \$2,750). *UNC*
\$900 - \$1000



Interesting Serial Numbered Banknotes

Five Dollar

- 621 1967 Coombs-Randall (R 202). Number 4. Serials NAJ 000 004. Scarce early low number issue. *UNC*
\$260 - \$280



- 624 2001 polymer MacFarlane-Evans (R GF8). The lowest serial available from this over print issue, of which the first 50 were released for tender (and sold for more) in 2001. Serials AA 01 001 001. (The first 1000 were kept for NPA archives). In folder of issue. *UNC*
\$600 - \$700



- 622 1990 Fraser-Higgins (R 212). Set of 40 notes all with matching serial numbers & consecutive prefixes. A complete printed sheet reassembled in order from circulation after release. Very scarce. In presentation album. *UNC*
\$900 - \$1000

- 625 2001 polymer MacFarlane-Evans (R GF8). From over print issue, of which the first 50 were released for tender in 2001 (and sold for more). Serials AA 01 001 011 low issued number. In folder of issue. *UNC*
\$580 - \$600



626 2002 polymer MacFarlane-Henry (R 220a).
 Low number 1 to 10. Serials BJ 02 000
 001-010. (10 notes total). Scarce. *UNC*
 \$1700 - \$1800



627 2002 polymer MacFarlane-Henry (R 220a).
 Low number 1 to 10. Serials BK 02 000
 001-010. (10 notes total). (Consecutive
 prefixes to previous, making a rare run).
 Scarce. *UNC*
 \$1700 - \$1800

Ten Dollar

628 1991 Fraser-Cole (R 313a). Consecutive
 prefix matching trio. Serials MNX/MNY
 799993-96. (6 notes total). *UNC*
 \$140 - \$150

Twenty Dollar

629 1979 Knight-Stone (R 407a). Repeater
 serials XZJ 474747. Also 1976 Knight-
 Wheeler (R 406a). Semi solid serials XQH
 222555. (2 notes total). *aU/UNC*
 \$180 - \$200

630 1983 Johnston-Stone. Consecutive prefix
 run of 5. Serials VNS-VNX 207000.
UNC
 \$350 - \$360

631 1991 Fraser-Cole AAA (R 413i). Consecutive
 run of 4. NPA issued. *UNC*
 \$220 - \$240

632 1994 polymer Fraser-Evans. Run of 8
 consecutive prefix matching serials. Serials
 AA-AH 94 700001. *UNC*
 \$280 - \$300

Fifty Dollar

633 1995 Fraser-Evans. With red serials, from
 Howard Florey NPA/Aust Post folder. Note
 only, serials HF 000239. *UNC*
 \$80 - \$100

One Hundred Dollar



634 1984 Johnston-Stone ZAA First prefix
 (R 608F). Also with 1996 polymer OO 96
 matching serials. Serials ZAA 000 118/OO
 96 000 118. (2 notes total). *aU/UNC*
 \$450 - \$500



635 1991 Fraser-Cole. Number 1 and 2
 consecutive serial number notes. Serials
 ZKV 000001/2. Scarce. (2 notes total).
UNC
 \$1800 - \$2000



636 1996 polymer Fraser-Evans AN 96 (R 616TF). Test note. *UNC*
\$600 - \$650



637 1996 Fraser-Evans CS 96 (R 616TL). Test note. *UNC*
\$600 - \$650



640 2006 polymer. Solid serials BI/BJ/BK/BL 777777. Run of 4 consecutive prefixes, all with matching solid numbers. *UNC*
\$700 - \$750

641 2007 polymer. Solid serials DG/DH 222222. Pair of consecutive prefixes, both with matching solid numbers. *UNC*
\$350 - \$360

Solid Serial Numbered Banknotes

Two Dollar



638 1976 Knight-Wheeler OCR-B centre thread. Solid 1 consecutive prefix pair. Serials HRT/HRU 111111. Scarce issue. *UNC*
\$800 - \$850

Five Dollar

639 2001 polymer. Solid 8 serials, with consecutive note. Serials EM01 888 888/889. (2 notes total). *UNC*
\$340 - \$360

Ten Dollar

642 1991. Solid 5. Serials MJZ 555555. *UNC*
\$180 - \$200

643 2002 MacFarlane-Henry solid 4 serials, consecutive prefix pair. Serials AM/AL 02 444444. *UNC*
\$340 - \$360

644 2002 MacFarlane-Henry solid 5 serials, consecutive prefix pair. Serials GB/GC 98 555555. *UNC*
\$340 - \$360

Twenty Dollar

645 1991. Solid 3. Consecutive prefix pair. Serials RYR/RYS 333333. *UNC*
\$380 - \$400

646 2002 polymer. Solid 3s. Consecutive prefix pair. Serials EJ/EK 02 333333. *UNC*
\$380 - \$400

Two Dollar

- 647 1966 Coombs-Wilson (R 81). Consecutive pair. Trace of a bend. *aU/UNC*
\$70 - \$80
- 648 1976 Knight-Wheeler (R 86c). Consecutive pair. *UNC*
\$70 - \$80

Five Dollar

- 649 1976 Knight-Wheeler (R 206a). Repeater serials NTF/NTR/NTS 543 543. Consecutive prefix pair and single with matching serials. (3 notes total). *aU/UNC*
\$90 - \$100
- 650 1992 polymer Fraser-Cole (R 214i). Pale green serials. Consecutive pair and single. (3 notes total). *UNC*
\$180 - \$200
- 651 1992 polymer Fraser-Cole (R 214i). Pale green serials. Consecutive run of 6. *UNC*
\$280 - \$300
- 652 1996 polymer Fraser-Evans BA 96 (R 217bF). First 1996 dated prefix. Consecutive trio. *UNC*
\$140 - \$150
- 653 2003 polymer MacFarlane-Henry (R 220b). Consecutive run of 7. Also 1996 polymer Fraser-Evans (R 218a). (8 notes total). *UNC*
\$150 - \$160

Ten Dollar



- 654 1967 Coombs-Randall (R 302). Consecutive pair. One note with a light trace of a bend, slight handling. *aU/UNC*
\$580 - \$600
- 655 1976 Knight-Wheeler (R 306a/306b). First note is centre thread (?), others side. Consecutive trio. *UNC*
\$140 - \$150
- 656 1976 Knight-Wheeler (R 306a) centre thread. Consecutive run of 4. Flicks. *UNC*
\$280 - \$300
- 657 1967 Coombs-Randall XBQ (R 402F). Lightly cleaned. *gVF/aEF*
\$380 - \$400
- 658 1968 Phillips-Randall (R 403). (2 notes). *EF-aUNC*
\$70 - \$80
- 659 1985 Johnston-Fraser (R 409a). Consecutive trio. *UNC*
\$130 - \$140
- 660 1985 Johnston-Fraser gothic (R 409b). *aUNC*
\$260 - \$280
- 661 1989 Phillips-Fraser (R 411). Consecutive pair. *UNC*
\$150 - \$160
- 662 1989 Phillips-Fraser (R 411). Consecutive run of 6. *aU/UNC*
\$250 - \$260

663 1993 polymer Fraser-Evans (R 416a).
Consecutive run of 4 (2), a pair and a
single. (11 notes total). *UNC*

\$625 - \$650

664 1994 polymer Fraser-Evans AA94 (R
416aF). First prefix. *UNC*

\$140 - \$150

665 1995 polymer Fraser-Evans (R 416b) also
Fifty Dollar 1997 polymer MacFarlane-
Evans (R 518a). (2 notes). *aUNC-UNC*

\$110 - \$120

Fifty Dollar

666 1973 Phillips-Wheeler (R 505). First year of
issue. Consecutive pair. *UNC*

\$470 - \$480

667 1983 Johnston-Stone (R 507). Consecutive
pair. *UNC*

\$250 - \$260

668 1985 Johnston-Fraser (R 509a) Gothic.
Consecutive pair. *UNC*

\$240 - \$250

669 1985 Johnston-Fraser (R 509a/509b). (2
notes). *UNC*

\$310 - \$320

670 1985 Johnston-Fraser (R 509b) OCR-B.
Consecutive pair. *aUNC*

\$280 - \$300

671 1990 Fraser-Higgins (R 512). Consecutive
pair. *UNC*

\$260 - \$280

672 1991 Fraser-Cole (R 513). Consecutive run
of 5. *UNC*

\$350 - \$360

673 1995 polymer Fraser-Evans (R 516a).
Consecutive trio. *UNC*

\$450 - \$500



674 1995 polymer Fraser-Evans (R 516a).
Consecutive run of 4. *UNC*

\$700 - \$750

One Hundred Dollar

675 1991 Fraser-Cole (R 613). Consecutive pair.
UNC

\$280 - \$300

676 1996 polymer Fraser-Evans BX 96 (R 616T).
Test note. Light corner flick. *UNC*

\$280 - \$300



677 1996 polymer Fraser-Evans CS 96 (R
616TL). Test note. *EF*

\$625 - \$650

678 1999 polymer MacFarlane-Evans (R 618b).
Consecutive run of 4. *UNC*

\$500 - \$550

Australian Decimal Coins

One Cent

679 1966. PCGS graded PR 67 RD. Full mint red
and rare this grade. *GEM UNC*

\$60 - \$70



680 1975. PCGS graded MS 67 RD. Equal highest graded. Scarce this grade. **GEM UNC**
\$110 - \$120

681 1984. PCGS graded MS 67 RD. Equal highest graded. Scarce this grade. **GEM UNC**
\$65 - \$70

Two Cent

682 1987. PCGS graded MS 67 RD. Equal highest graded. Rare this grade. **GEM UNC**
\$110 - \$120

683 1988. PCGS graded MS 67 RD. Equal highest graded. Scarce this grade. **GEM UNC**
\$110 - \$120

684 1988 Proof. PCGS graded PR 69 DCAM. Second highest graded. **FDC**
\$25 - \$30

Five Cent



685 1966(a). Canberra Mint, short echidna spine type. PCGS graded MS 68. Equal highest graded. Rare this grade. **GEM UNC**
\$240 - \$250



686 1967. PCGS graded MS 68. Equal highest graded. Rare this grade. **GEM UNC**
\$750 - \$800

687 1968. PCGS graded MS 65. Scarce this grade. **GEM UNC**

\$20 - \$25



688 1980. PCGS graded MS 68. Equal highest graded. Rare this grade. **GEM UNC**
\$650 - \$700

689 1984. PCGS graded MS 67. Equal highest graded. Scarce this grade. **GEM UNC**

\$60 - \$65

690 1988. PCGS graded MS 68. Scarce this grade. **GEM UNC**

\$25 - \$30

691 1988 Proof. PCGS graded PR 69 DCAM. **FDC**

\$18 - \$20

692 2005. PCGS graded MS 69. Equal highest graded. Rare this grade. **GEM UNC**

\$80 - \$90

Ten Cent

693 1988. PCGS graded MS 68. Scarce this grade. **GEM UNC**

\$35 - \$40

694 1989. PCGS graded MS 68. Second highest graded. Scarce this grade. **GEM UNC**

\$140 - \$150

Twenty Cent

695 1995. United Nations. PCGS graded MS 65. Scarce this grade. *GEM UNC*

\$35 - \$40

702 1996. Parkes C mintmark. PCGS graded MS 67. Equal second highest graded. Scarce this grade. *GEM UNC*

\$25 - \$30

703 1998. PCGS graded MS 68. Equal highest graded. Rare this grade. *GEM UNC*

\$130 - \$140

Fifty Cent

696 1966 Proof Round Fifty Cent. *FDC*

\$140 - \$150

704 1998e. Florey M mintmark. PCGS graded MS 67. Equal highest graded. *GEM UNC*

\$90 - \$100



697 1971. PCGS graded MS 67. Equal highest graded. Rare this grade. *GEM UNC*

\$280 - \$300



705 1999c. The Last ANZACS B mintmark. PCGS graded MS 68. Equal highest graded. PCGS graded MS 68. *GEM UNC*

\$280 - \$300

698 1978. PCGS graded MS 66. Equal highest graded. Scarce this grade. *GEM UNC*

\$90 - \$100

706 2001. Centenary of Federation. PCGS graded MS 68. Equal highest graded. Scarce this grade. *GEM UNC*

699 2001. Centenary of Federation, Queensland. PCGS graded MS 68. Equal highest graded. Scarce this grade. *GEM UNC*

\$170 - \$180

707 2002. Year of The Outback. PCGS graded MS 69. Equal highest graded. Rare this grade. *GEM UNC*

\$120 - \$130



700 2005. Student Design. PCGS graded MS 68. Equal highest graded. Rare this grade. *GEM UNC*

\$600 - \$650

Mistruck Error Coins

One Dollar

701 1995a. AB Paterson C mintmark. PCGS graded MS 67. Toned. Equal second highest graded. *GEM UNC*

\$30 - \$35

Penny



708 1962Y. Double struck along the top with approximately 5mm of double lettering on both sides. Scarce. *gVF*

\$350 - \$400

Threepence

- 709 1942M. Indented planchet flan flaw on Obverse on Kings head. A scarce error date. *VF*

\$140 - \$150

Shilling



- 710 194-. Large off centre, slightly raised rim lip, struck 4mm off centre. Toned with subdued bloom. *gEF*

\$240 - \$250

Florin



- 711 1944. Struck with a 2-3mm stepped, raised rim lip. Nice grade for this issue. *aUNC*

\$140 - \$150

Two Cent



- 712 ND. Struck on a 5 Cent blank. Virtually as struck with details a little weak and no rim. Possibly a unique type, as this is the only example we have sighted? Very rare as such. *aUNC*

\$1400 - \$1500

Five Cent



- 713 1989. Struck on a 1 Cent blank (2.58 grams). Slightly off centre with part rim missing due to striking, and toned, probably polished. Very scarce. *aEF*

\$1100 - \$1200

- 714 2003. Struck off centre 2mm, with slightly raised rim lip. *EF*

\$60 - \$70



- 715 Twenty Cent 1978. Mule strike. Usual Australian 20 Cent Obverse with Fiji Reverse. APCGS graded MS 64. The only example of this denomination we have seen. Very rare. *Ch.UNC*

\$20000 - \$22000

Twenty Cent



- 716 1979. Struck on a Nepal One Rupee blank (7.4 grams). Slightly off centre with part rim missing due to striking. Rare. *aEF*

\$800 - \$900

Fifty Cent



- 717 1977. Double Obverse, struck with the Heads side on both sides. Rotated 90 deg. One of only two examples known (see 1988 Renniks Catalogue pp 80), with the only other known example confiscated in 1984 by the Federal Police. Extremely rare. *UNC*

\$4000 - \$4500

One Dollar



- 718 2000. Mule strike. Usual One Dollar Reverse with 10 Cent Obverse. Rare. PCGS graded MS 63. Very rare in this high grade with only three examples graded higher. *Ch.UNC*

\$6000 - \$7000

Assorted

- 719 Minor mis-strikes. Threepence 1949 metal adhesion flaw, Penny 1924 Filled 4, 1931 dropped 1 die variety, Penny N/D massively off-cut, resulting in only 5% of design on one side, the other is blank. (4 items total). *FINE-aEF*

\$80 - \$100

Jewellery and Related

- 720 Cuff Links. Set with South Africa 1/10th Krugerrand 1994 (1/10th oz pure gold) plus 9ct 13gm frame. *As new*

\$550 - \$600

- 721 Gents sterling fancy silver dog tag on ball chain (25gm total). *As new*

\$40 - \$50

- 722 Gents sterling silver woven design dog tag on snake chain (25gm total). *As new*

\$40 - \$50

- 723 Gents sterling silver rondell and leather necklace (25 gm total). *As new*

\$40 - \$50

- 724 Gents matching sterling silver, onyx & leather bracelets (30gm total). *As new*

\$50 - \$60

- 725 Gents sterling silver and leather necklace & bracelet. (40 gm total). *As new*

\$120 - \$140

- 726 Gents sterling silver and leather necklace & bracelet (not matching). (40 gm total). *As new*

\$120 - \$140

- 727 Gents sterling silver bracelet, cuff bangle & cuff links with matching interlocking design. (95 gm total). (Retail at \$770). *As new*

\$250 - \$300

- 728 Gents sterling silver necklace, bracelet *As new*

\$250 - \$300

729 Gents sterling silver pendant on leather cord with matching black striped bracelet & cufflinks. (80 gm total). *As new*

\$250 - \$270



730 Gents 18ct diamond ring. Square faced design. (Dia weight= 0.640cts). (Valuation \$3,200). *As new*

\$2400 - \$2600



731 Gents 18ct ruby & diamond ring. Attractive asymmetrical design. (Dia weight= 0.176cts, ruby=0.584 cts). (Valuation \$3,450). *As new*

\$2000 - \$2200



732 Gents 18ct solid gold curb link chain. 109 gms. (Valuation \$7,730). *As new*

\$4500 - \$5000



733 Gents modern 18ct 2 tone gold & diamond bracelet. Dia weight= 1.85 cts total. (Valuation \$10,060). *As new*

\$7000 - \$7500



734 Traditional gold curb link fob chain with T bar in 9ct. (35gms). (Retail around \$2,450). *As new*

\$1200 - \$1300



735 Diamond necklace. 18ct Art Nouveau style diamond cuffed hands holding a fancy open diamond heart on solid curb link chain. Total weight= 54.1 gm, dia weight= 0.390 ct total. (Valuation \$8,010). *As new*

\$6000 - \$6500



736 Diamond earrings. Fancy open heart shape design. 18ct gold, dia weight= 0.494ct. Matching design to previous lot. (Valuation \$2,760). *As new*

\$2200 - \$2400



737 Modern 18ct diamond band with 5 diamonds equalling 1.208ct. (Valuation \$5,230). *As new*

\$3800 - \$4000



738 **Sapphire necklace. 18ct with 37 sapphires set in a V shape design. Sapphires= 4.625 cts total. (Valuation \$5,760). As new**
\$3200 - \$3400

739 **Silver pocket watch 17 jewels. Hampden Watch Co. Swiss lever escapements, safety pin model with 2nd dial. Engraved bezel.**
\$250 - \$300

740 **Silver pocket watch 1825. Cylinder movement, 10 rubies, working. White enamel open face with intricate engraving on Reverse side. With key.**
\$250 - \$300



741 **Unisex solid 18ct gold & diamond custom made watch. Pave set diamond face with black diamonds for numerals, diamond bezel and diamonds down the edges of entire band. Swiss quartz movement. Dia weight= 2.55ct, total weight= 120gm. (Valuation \$24,000). Perfect working new condition. As new**
\$6000 - \$7000

Ancient Coins



743 **Ancient Greece, Italy Kroton. Bruttium, 500-460 B.C. Silver Stater or nomos. (S.256). Tripod, crane to left, Rev incuse tripod. A little pitted. aVF**
\$250 - \$260



744 **Ancient Greece Macedon, Phillip II AR Tetradrachm 359-336 BC. (cf S. 6679). Head of Zeus, Reverse King on horse riding left. Rare. EF**
\$1400 - \$1500



745 **Ancient Greece Cilicia. Tarsos AR Stater 361-334 BC. Head of Athena facing in triple crested helm, Reverse Baal of Taros seated with sceptre. Scarce. aEF**
\$1000 - \$1100



746 **Ancient Greece Tetradrachm Alexander the Great 336-323 BC. Lovely classical style. gVF**
\$600 - \$650

World Banknotes

742 **New Zealand Ten Shillings Bank of New South Wales, no domicile Specimen Uncut printers test sheet of 6. Stamped and punched C. Skipper and East. Small split at top of centre fold. Rare and seldom seen. EF**
\$2400 - \$2500



747 Roman Republic AR Denarius. Marcus Philippus 56 BC. (S.382). Obverse diademed head of Ancus Marcius (the first to bring water to Rome), Rev Philippus behind equestrian statue. *gVF*

\$170 - \$180

748 Roman Republic AR Denarius 49 BC. Sicinius for Coponius. Obverse diademed head of Apollo, Reverse club of Hercules. Toned. *gFINE/aVF*

\$150 - \$160



749 Roman Republic AR Denarius. Julius Caesar 46 BC. (S.1403). Rev simpulum, sprinkler, capis and lituus. *gFINE*

\$525 - \$550



750 Roman Republic AR Denarius. Julius Caesar 46-45 BC. (S.1404). Conquest of Gaul. Reverse captives and Gallia. Scarce. *gVF*

\$850 - \$900



751 Roman Imperial AR Denarius. Mark Antony and Octavian (Augustus) Triumvirate 41BC. Moneyer BARBAT. (S.1504). Edge slightly ragged but nice clear portraits and lettering. Rare, especially in this grade. *gVF/aEF*

\$2000 - \$2200



752 Roman Imperial AR Denarius. Mark Antony 32-31 BC. (S.1483). Legionary type with praetorian galley to right. Ex Nobles Sale 81. Scarce type. *gF/aVF*

\$900 - \$1000



753 Roman Imperial AR Denarius. Augustus 19-18 BC. (S.1607). Colonia (Caesar Augusta) Spanish mint. Rev 8 ray comet. Chopmark on head. Rare. *gVF*

\$700 - \$750



754 Roman Empire AR Denarius. Tiberius 14-37 AD. (S.1763). Rev Livia seated to right. The famous tribute penny type. *VF*

\$480 - \$500

- 755 Roman Empire Brass Dupondius Caligula 37-41 AD (in honor of Divis Augustus). (S 1811). Augustus (or Caligula) seated on Curule chair. Once cleaned. *FINE*
\$140 - \$150



- 756 Roman Empire AR Denarius. Nero 54-68 AD. Reverse Nero seated, Salus at bottom. *gF/aVF*
\$300 - \$320

- 757 Roman Empire AR Denarius. Vitellius 69AD. Rev Concord seated to left. Old scratches. *gFINE*
\$180 - \$200

- 758 Roman Empire AR Denarius. Vespasian 69-79 AD. (RIC 772). Rev Pax seated left holding a branch. *aEF*
\$350 - \$400



- 759 Roman Empire AR Denarius. Titus 79-81 AD. (S.2515). Rev throne with triangular back. Scarce. *aEF*
\$525 - \$550

- 760 Roman Empire AR Denarius. Domitian 81-96 AD. Rev Minerva standing (the Goddess of War). *gVF/aEF*
\$240 - \$250

- 761 Roman Empire AR Denarius. Trajan 98-117 AD. Reverse Danubius reclining. *VF*
\$250 - \$260

- 762 Roman Empire AR Denarius. Hadrian 117-138 AD. Reverse Victory seated, snake to left. *aVF/VF*
\$220 - \$240



- 763 Roman Empire AR Denarius. Hadrian 117-138 AD. Reverse Goddess standing, Rev Asia third journey. Toned. *gVF*
\$425 - \$450

- 764 Roman Empire AR Denarius. Antoninus Pius 138-161 AD. Reverse Antoninus sacrificing. *gF/aVF*
\$160 - \$180

- 765 Roman Empire AR Denarius. Antoninus Pius 138-161 AD. Reverse Fortuna standing. Edge cracks. *gFINE/aVF*
\$220 - \$240

- 766 Roman Empire AR Denarius. Marcus Aurelius 161-186 AD. Reverse Mars standing (Rome mint). *aVF*
\$240 - \$250

- 767 Roman Empire AR Denarius. Caracalla 211-217 AD. Severan dynasty. *gVF/aEF*
\$170 - \$180

- 768 Roman Empire AR Denarius. Gordian III 238-244 AD. Reverse Pietas standing. *EF*
\$180 - \$200

CONSIGNMENTS:

Consignments for our next auctions:

PS 7 - Closes Mid May 2016.

Sale 84 - Closes August 2016.

Contact us now for submissions.

Memorabilia, Ephemera and Collectable



- 769 1932 Los Angeles Olympic Games stadium pass to All Events. Tunnel 8, Row 10, Seat 6. Old tape adhesions and some stains, top right corner missing. Originally given to the vendor by Norman Banks described as follows: Norman Banks (MBE) one of Melbourne's great radio broadcasters, attended the LA Games as a commentator. Norman also was the person who started Carols by Candlelight in Melbourne in 1938. The gift from Norman came to me as I had been selected to run in the Olympic Torch Relay in 1956, and had an Association with 3AW and had always admired this ticket which was attached to the glass wall of his studio. He asked if I would like to have it. As a collector of anything I said yes. In later years I had the sticky tape removed by the conservators at the Ian Potter Museum and Art Gallery. The discoloration is showing but the ticket is expertly preserved. Scarce and interesting. *VF*

\$500 - \$550

Australian Tokens



- 770 Hedberg, OH copper Penny token. (A201/R8). Brown with traces of mint red. Scarce. *UNC*

\$1300 - \$1400



- 771 Hogarth, Erichson & Co silver Threepence token 1858 (R8 Rarity). NGC graded MS 62. Edge crack from striking, with bright mint bloom and virtually as struck. Extremely rare this grade, and one of the finest known. (Note - there is a scratch on the outer plastic case). *UNC/Ch.UNC*

\$4600 - \$4800



- 772 Noah Shreeve, Adelaide, SA. Check-piece (Farthing?) N/D in brass (A 495/R 463). Rarity 6, 24mm. Die variety 2 with extra T in the word BRITAIN Brittain. Not originally intended for circulation, but accepted at other establishments as a Halfpenny. Ex Spink Aug 1990, lot 415 and the Alice Springs collection. A few old scratches. Rare. *gFINE*

\$1500 - \$1600

- 773 Small collection of Australian & New Zealand Tokens. Includes Marsh & Brother Penny Token, Hobart (R 341), Hanks & Compy Penny & Halfpenny Token, Sydney 1857 (R 178/R 177), Mason Struthers & Co, New Zealand Penny Token (cleaned), United Services Hotel, Auckland NZ Penny Token 1874. (5 coins total). *GOOD-VF*

\$140 - \$150

Royal Australian Mint Products

- 774 Mint sets 1980. In pack of issue. (5 sets). *UNC*

\$10 - \$15

- 775 Mint sets 1986. In pack of issue. Minor damage to packs. (3 sets). *UNC*
\$20 - \$30
- 776 Mint sets 1991. In pack of issue. Minor damage to packs. (3 sets). *UNC*
\$50 - \$60
- 777 Baby Mint set 1997. Scarce year. *UNC*
\$170 - \$180
- 778 Proof set 1979. In foam pack. *FDC*
\$15 - \$20
- 779 Proof set 1980 (3). In foam packaging, some slightly damaged. *FDC*
\$60 - \$70
- 780 Proof set 1980 (4). In foam packaging, some slightly damaged. *FDC*
\$70 - \$80
- 781 Proof set 2006. Slight damage to outer boxes. (2 sets). *FDC*
\$40 - \$50



- 782 **Centenary of Federation Proof 20 coin set 2001. Some slight storage damage to case.** *FDC*
\$170 - \$180



Halfpenny

- 783 1953. PCGS graded MS 63RB. Mostly mint red/brown lustre. *Ch.UNC*
\$20 - \$30
- 784 1961. Mint roll. In brown paper roll. *UNC*
\$90 - \$100

Penny

- 785 1920 Dot below bottom scroll. Verdigris stains and some pitting. *gVF*
\$10 - \$20
- 786 1933/2 Overdate. (3 coins). *VG-FINE*
\$20 - \$30
- 787 **1964. Mint roll. In brown paper roll.** *UNC*
\$90 - \$100
- 788 1964. Mint roll. In Wales Bank (Westpac) paper roll. *UNC*
\$90 - \$100



Threepence

- 789 1947. Also Sixpence 1948. (2 coins total). *gEF-aUNC*
\$30 - \$40
- 790 1954. Also Halfpenny 1959, some mint red and brown. (2 coins total). *UNC*
\$60 - \$80
- 791 1958. PCGS graded MS 64. *Ch.UNC/GEM*
\$10 - \$15

Sixpence

- 792 **1962. 2 broken rolls, in brown wrappers.** *UNC*
\$140 - \$150



- 793 Complete set in old plastic sheet 1910-1963. Many better grades including some Fine or better George V, and a better than average set (with an extra 1935). (55 coins). *VG-UNC*
- \$120 - \$140

Shilling

- 794 George V 1910 (20), 1912 (20). (40 coins total). *POOR*
- \$110 - \$120
- 795 George V 1913. (37 coins total). *POOR*
- \$100 - \$110

Florin

- 796 1916. Light tone. *aEF*
- \$30 - \$40
- 797 1927 *aEF*
- \$30 - \$40
- 798 1927 Canberra. Nice old tone. (4 coins total). *aUNC*
- \$80 - \$100
- 799 1932. Key date. (2 coins). *VG*
- \$250 - \$260



- 800 1932. Key date. (2 coins). *VG*
- \$250 - \$260



- 801 Sheets of 31 George V Florins 1910 - 1936. Includes 1915, 1927 Canberra (6) 1933 (3). A few better coins. *GOOD-FINE*
- \$140 - \$150

Crown

- 802 1937. A few marks. (2 coins). *aUNC*
- \$100 - \$110
- 803 1937. (10 coins). *FINE-VF*
- \$240 - \$250

Assorted

- 804 Sheet of assorted Pre silver, 370 grams total. *POOR/GOOD*
- \$150 - \$160
- 805 Large Green album of assorted Australian Predecimal and World issues. Includes 23 George V Florins plus 8 Canberra Florins, assorted Sixpences and Threepences including an *aVF* 1911 Sixpence and an *aFine* 1942 Threepence and a few other better issues, 4 x 1937 Crowns. World coins include NZ, PNG and some assorted silver crown size issues. Over 270 coins total. *GOOD-UNC*
- \$250 - \$260

Australian Pre Decimal Banknotes

Ten Shillings

- 806 1942 Armitage-McFarlane (R 13). *gEF*
- \$110 - \$120

807 1949 Coombs-Watt (R 14). *aUNC*
\$150 - \$160

808 1952 Coombs-Wilson (R 15). *EF*
\$70 - \$80



815 1974 Canada Olympics 1974 Silver UNC set of 4 coins (3 sets). Cases marked, some damage. *UNC*
\$450 - \$500



809 1961 Coombs-Wilson (R 17). (4 notes). *aU/UNC*
\$200 - \$220



816 1976 Canada Olympics Silver Proof set of 4 coins (3 sets). Coins slightly toned and outer packaging damaged, one set with no outer box. *FDC*
\$450 - \$500

One Pound

810 1938 Sheehan-McFarlane (R 28). Cleaned. *aVF*
\$110 - \$120

811 1961 Coombs-Wilson (R 34a). Light bend. *aUNC*
\$50 - \$60

812 1961 Coombs-Wilson Reserve (R 34a). *UNC*
\$110 - \$120

813 1961 Coombs-Wilson (R 34b). *UNC*
\$120 - \$140

817 Assorted common world and Australian decimal coins. Includes Portugal 20 Escudos 1953, Uruguay 10 Pesos 1961, El Gaucho, Cuba 1 Peso 1953, Netherlands 2 1/2 Guilder 1959, Bahrain 500 Fils 1968, Bahamas 1 Dollar 1966, South Africa 50 C 1962, Mexico 5 Peso 1955, 25 Pesos 1968 (4). Also 2 \$2 paper notes badly damaged by fire. (31 items total). *POOR-EF*
\$40 - \$50

818 Great Britain Commemorative set of 4 Proof coins 1978. 25th Anniversary of the Coronation. *FDC*
\$100 - \$110

819 New Zealand Proof set 1981 (2). Also Proof Royal Visit Dollar 1981. (3 items total). *FDC*
\$55 - \$60

Miscellaneous & Unreserved Lots

814 1974 Canada Olympics 1974 Silver UNC set of 4 coins (2). Cases marked, some damage. *UNC*
\$300 - \$320

820 Philippines assorted coins 1978. 1 Sentimo-50 Pesos, includes 3 x 25 Pesos and 3 x 50 Pesos. (24 coins total). *UNC*
\$20 - \$30

All bidders please allow us until midday Monday 25th April to sort, finalize and double check all postal and online bids.

Online bidders will receive a preliminary indicative invoice, or Alternatively, you can go into the accounts section (the Account button can be found top left near log in) to check your total and view the lots you have won. Note, final invoices will be emailed or posted once all postage and handling charges have been finalized.

You can also check all lot prices at the conclusion of the sale from the Sale 83 Lots page, and the Preliminary Prices Realised will be posted on the website soon after the conclusion of the sale.

Passed In lots MAY still be available as shown for sale online on a first come basis for 7 days after the sale ends at the stated Reserve Price. All unsold lots will be withdrawn from sale after 7 days.

The next Auction, Postal Sale 7, will be held in mid/late June 2016 (Live Online only Auction) The printed catalogue will be posted to subscribers 2 weeks before the sale date. Sign up online now to receive email notifications for this sale if you are not a member and for further information, or pay for the \$50 2 year subscription fee if you wish to receive printed and posted catalogues. Please see the website for further details (see link below), or contact us now.

We will be accepting lots for consignment for all up upcoming sales until about 5 weeks before the sale date, at which time submissions for that Sale will close. Please see the Upcoming IAG Auctions and Sales section on the IAG Website for full updated Auction information and closing consignment times.

SPECIAL NOTE: There will be NO VENDORS FEES or COMMISSIONS (Zero % Commission) for ALL of 2016 on any lots submitted for sale. Please contact us NOW to find out how we can help you with any Auction consignments.

www.iagauctions.com

For any more information please call our office on:
Ph: (07) 55 380 300 - or Fax: (07) 55 387 296

Alternatively you can Email us at:

mail@iagauctions.com

To download the Prices Realised and view unsold lots after the sale from our Website, go here:

www.iagauctions.com



LOT 171



LOT 311



LOT 48



LOT 349



LOT 455



LOT 456



LOT 493



LOT 537



LOT 554



LOT 557



LOT 586



LOT 592



LOT 358



LOT 452



LOT 458



LOT 475



LOT 538



LOT 551



LOT 559



LOT 580



LOT 717



LOT 741

Terms And Conditions of Sale

Please read the following "Terms of Sale" carefully. These terms are applicable to all floor, postal and online bidders in this auction. Submission of bids in this Auction constitutes your full acceptance of these "Terms of Sale".

1. This is a public auction sale, NOT an approval sale. At the fall of the gavel or auctioneer's call of "Sold", all sales are then final, and any bid acknowledged and relied on by the auctioneer shall not be withdrawn. Bidding in this auction in any way confirms that the bidder personally guarantees all payments, and acknowledges and accepts the Terms and Conditions of sale as set out herein. The auctioneer has final discretion in all such matters. In case of a dispute, the lot(s) in question may be immediately resold. The auctioneer as represented here includes International Auction Galleries as an entity.

2. Payments must be made in full and all floor bidder purchases must be removed the day of the sale, or by 5p.m. the next day. Absolutely No lots will be released until payment in full has been made. Payment may be made in Cash, by Personal Cheques (with proper identification, at the discretion of International Auction Galleries), or by Bank Transfer or Major Credit Cards as stipulated. Successful postal bidders will be notified by mail via an auction receipt. All postal bidder accounts must be fully finalised within 14 days of the sale date.

3. A 19.25% buyer's premium will be added to the knock down price of each lot (includes GST where applicable). **All payments by American Express will incur a 3% surcharge.**

4. Unless otherwise specifically stated by the auctioneer, each new bid shall be raised above the previous bid by such amount as is determined by the auctioneer during the course of the auction, and no party shall be allowed to retract his or her bid after acknowledgment by the auctioneer.

5. The auctioneer reserves the right to refuse any bid and to withdraw any goods from sale at any time, or to disclose any reserves or vendor information, without having to state any reason.

6. At the fall of the hammer, (if required by the Auctioneer), the purchaser shall give his or her full name and address, and pay 25% of the purchase price deposit. In default, the lot(s) purchased may, at the auctioneer's discretion, immediately be reoffered and resold. All lots sold will remain the property of the owner/vendor until cleared payment is made in full. Only then will the title of ownership of the lots pass to the purchaser, irrespective of any terms or deferment of payment.

7. Except as otherwise provided by state or federal law, no condition or warranty is given or implied by the auctioneer in respect of any lot offered for sale via auction. As all lots are given for inspection prior to the commencement of the sale, it shall be presumed that the goods have been inspected and that the purchaser accepts the goods are sold with all faults, and all lots are sold as is, on the basis of Caveat Emptor. No error or mis-description of any lot shall give cause for an invalidation of sale or an abatement of price, and the auctioneer shall not be held responsible for any such error, despite all care being taken. All lots are inspected and offered in good faith to the best of our determination to be genuine as described (except where so noted), however no guarantee is undertaken with respect to refunds on this basis.

8. The auctioneer shall not be liable for any description or mis-description given on any of the goods presented here for sale in any way. Any statement as to the description of goods is given as a statement of opinion only as represented to the auctioneer, and is not to be relied on as a representation of fact. Whilst every effort is made, the auctioneer gives no warranty that the quantities or any grading given with respect to the description of any lot as stated is correct. All images used are given as a guide only, and are not guaranteed to be an accurate representation.

9. No lots purchased by a bidder may be returned, including those lots where the bidder is acting as agent for another. There are no returns or refunds except for reason of lack of authenticity (as is stated in clause 7 and 8 above detailing liability). It is assumed that all intending bidders (including all postal and internet bidders) have obtained their own satisfaction and/or done due diligence on all lots before submitting any bids in any manner, and all bids thusly submitted are subject to the full terms and conditions of sale. Items purchased and submitted to third party grading immediately voids any and all further rights of return. The auctioneer accepts no responsibility for any mistakes in any postal or phone bidding conducted. Late remittance of payments constitutes just cause for revocation of all return privileges. In the event that a bidder is acting as an agent for another party, and that agency has not been disclosed to the auctioneer in writing 24 hours before the sale date, then the bidder is deemed by the auctioneer to be the final buyer in all respects, and is fully responsible for all payments, fees and charges. **In no event may any lot(s) be returned after Twenty One (21) days from the date of the auction. All sales are then final.**

10. If any purchaser fails to comply with any of conditions of sale as outlined here or if any monies paid in any way given on settlement of account for any goods is dishonoured or unfulfilled, then any monies which the purchaser has paid to the auctioneer on account of the purchase shall then be forfeited absolutely to the vendor. The auctioneer acting as agent for the vendor is at liberty to re-sell the lot(s) in any manner and upon such terms and conditions as they may deem proper and/or to then sue the purchaser for any loss or resulting damages as set out below. Damages include all losses and expenses incurred by the vendor or the auctioneer as well as all damages which the vendor or the auctioneer may sustain resulting from any re-sale and storage, which shall then be recovered from the purchaser as liquidated damages. The auctioneer (acting on behalf of the vendor) in the event of such resale is entitled to:

a) The total amount of any and all commissions and/or buyers premiums applicable or any other fees and commissions lost as a result of the purchaser defaulting on the purchase.

b) The full cost of advertising and all other expenses related to re-sale as deemed necessary, including any storage costs and insurance charges.

c) Any differential in price from the initial sale price to the price achieved in re sale of the items(s).

11. A service charge of 2% compound per month (or part thereof) will be added to overdue accounts (30 days after the date of Auction is the overdue period for all unpaid accounts). In any event the title of any lots sold will not pass to the purchaser until the full amount of the purchasers auction account has been fully paid and remitted to the vendor, including any other service charges, storage or any other fees resulting from any late payments.

12. Estimates are given only as a guide, and not given as starting points for bidding: Lots may sell for a price greater than or less than these estimates. Bidding will start at an increment above the lowest postal bid received, or at the Auctioneers sole discretion. All prices are in Australian Dollars.

13. All images, text and information supplied in this catalogue remain the property of International Auction Galleries, and may not be used or transmitted in any way without written permission.



LOT 460



LOT 478



LOT 552



LOT 715



LOT 213



LOT 455



LOT 552



LOT 553



LOT 557



LOT 214